



# GRAPEVINE

## Capel-le-Ferne Village Newsletter

FEBRUARY 2026 - ISSUE NO: 355



NO JANUARY ISSUE.

IT IS EDITOR'S DECISION ON FINAL CONTENT.

ADVERTS IN THIS NEWSLETTER ARE IN NO WAY AN ENDORSEMENT OF PRODUCTS OR SERVICES.

### WHAT'S ON IN CAPEL-LE-FERNE

Please check with organisation direct to clarify events and meetings.

*If you know details of your event, please let Editor know so organisations avoid booking same date*

Feb 6 <sup>th</sup>	Capel's Good Neighbours FREE Coffee Morning
Feb 6 <sup>th</sup>	Crafty Covers Meeting (Capel Cares)
Feb 6 <sup>th</sup>	PFA Quiz Night at School
Feb 10 <sup>th</sup>	Crafty Covers Meeting (Farmers' Market)
Feb 17 <sup>th</sup>	Capel Gardeners Quiz Evening (page 5)
Feb 20 <sup>th</sup>	Capel's Good Neighbours FREE Coffee Morning
Feb 20 <sup>th</sup>	Crafty Covers Meeting (Capel Cares)
Feb 22 <sup>nd</sup>	Village Hall Indoor Boot Fair
Feb 24 <sup>th</sup>	Crafty Covers Meeting (Farmers' Market)
Mar 6 <sup>th</sup>	Crafty Covers Meeting (Capel Cares)
Mar 7 <sup>th</sup>	Family Bingo – Youth Club at Village Hall
Mar 10 <sup>th</sup>	Crafty Covers Meeting (Farmers' Market)
Mar 14 <sup>th</sup>	Capel Gardeners Spring Flower Show (page 5)
Mar 17 <sup>th</sup>	Capel Gardeners Flowers for the Show Bench (page 5)
Mar 28 <sup>th</sup>	Community Lunch
Jun 20 <sup>th</sup>	Community Lunch
Jun 26 <sup>th</sup>	AGM – Youth Club
Sept 6 <sup>th</sup>	Garage Safari
Oct 17 <sup>th</sup>	Community lunch
Nov 15 <sup>th</sup>	Boot Fair
Dec 5 <sup>th</sup>	Christmas Event – to be confirmed



CAPEL'S GOOD NEIGHBOURS  
FREE COFFEE MORNING  
sponsored by Capel Cares



CAPEL'S GOOD NEIGHBOURS  
FREE COFFEE MORNING  
DON'T MISS OUT



Come and join us on our next coffee mornings,  
**6<sup>th</sup> and 20<sup>th</sup> FEBRUARY**

Free coffee morning, every month, twice a month!  
Usual time of 10.00am.

Village Hall, Lancaster Avenue, Capel-le-Ferne, CT18 7LX  
Everyone Welcome

### Capel Crafty Covers 2026

We are planning to start meeting again on the following dates:-

#### NEXT SESSIONS

Friday 6 February 10—12pm (CC)  
Tuesday 10 February 10—12pm (FM)  
Friday 20 February 10—12pm (CC)  
Tuesday 24 February 10—12pm (FM)  
Friday 6 March 10—12 (CC)  
Tuesday 10 March 10 - 12 (FM)

Please come along to one or as many as you can.  
We'd love to have you onboard!



Hoping to make Valentine and Easter postbox toppers plus fidget blankets. Ideas for future projects also welcomed.

Watch this space—help will be required from those who knit, sew and crochet. Donations towards projects when identified.

Ideas, queries, offers of help—contact Philippa.

Capel-le-Ferne  
Primary School  
PFA



## QUIZ NIGHT

FRIDAY  
6TH FEBRUARY  
7PM

£5 PER ADULT. £3 PER CHILD.  
TABLES OF 6.

PLEASE BRING YOUR OWN DRINKS AND SNACKS.  
IF YOU HAVE ANY UNWANTED CHRISTMAS GIFTS  
PLEASE BRING THESE IN FOR A RAFFLE TOO!

CAPEL-LE-FERNE PRIMARY SCHOOL,  
CAPEL STREET, CT18 7HB

## INDOOR BOOT FAIR AT CAPEL VILLAGE HALL

Lancaster Avenue  
Capel-le-Ferne  
CT18 7LX

Book your table now  
for just £8

Contact Kath at:  
[Secretary.cvhmc@gmail.com](mailto:Secretary.cvhmc@gmail.com)  
OR at Farmers Market  
OR on 07376614014

SUNDAY  
22ND  
FEBRUARY  
9AM – 1PM





**CAPEL-LE-FERNE VILLAGE HALL**  
providing services to the local community

<http://www.capelVillageHall.com>

**REGISTERED CHARITY No.281786**

**Something to celebrate? Want to hold a party?**

**Need to organise a meeting or training session?**

**Want to start a teatime chat group or a new sports club?**

**Licenced for most things (except hypnosis and boxing)**

**including sale of alcohol, PRS, raffles.**

**To view the Hall, or make a booking contact  
the Letting Secretary, Sue Leaning on 07939 095880**

**Email preferred: [sue.lettingscvh@gmail.com](mailto:sue.lettingscvh@gmail.com)**

So, the New Year has come in with a bang with lots of Hall overhauling to be done. (See what I did there?). We are looking at all the jobs that require action this year including painting of the main Hall, always stimulating, plus repairs to kitchen, stage and storerooms. This week our WhatsApp conversation concerned itself with cleaning and scrubbing of bargeboards while last week, it was all about the scope of the paintwork. We are also considering the repair or replacement of the cupboards at the far end of the Hall and replacement of the kitchen cooker, with a much larger range, although must depends on gas pressure. So, lots of things planned for the fabric of the Hall and we will of course let you know if any of the work impacts on Hall lets.

In January we wrote to our regular Hall users to advise of increases to the cost of hiring the Hall. Private hirers of the Hall will be similarly affected. Increases will take effect in April 2026. At the same time, we are reducing the amount of set up and take down time covered by a Hall booking. Before COVID, this used to be 15 minutes but was increased to 30 minutes during COVID to allow for extra cleaning. It has now been decided by the committee to drop to 15 minutes. If more time is required, then this will have to be paid for. If there are any queries about any of this, then please feel free to talk to the Committee Chair or Secretary.

As befits the beginning of the year, we have also agreed diary dates for the year. The main ones as follows.

- Saturday 22 February Boot Fair – bookings currently being taken.
- Community Lunch 28<sup>th</sup> March.
- Community Lunch 20<sup>th</sup> June.
- Garage Safari 6<sup>th</sup> September.
- Community lunch 17<sup>th</sup> October.
- Boot Fair Sunday 15<sup>th</sup> November.
- Christmas event 5<sup>th</sup> December – to be confirmed.

Much of the work required is going to need injections of both money and time. We intend to go for any applicable grants and are looking for extra ways, to fundraise generally. But we are also interested in any tradespeople in the village who would consider donating their time to assist us. Please contact the committee for further information. And can I end this, by wishing everyone a somewhat belated Happy New Year.

### **Village Hall 100+ Club Winners for DECEMBER**

**1<sup>st</sup> - Pam Mullett**

**2<sup>nd</sup> - Brian Harris**

**3<sup>rd</sup> - Lesley Sharman**



**Congratulations**



**[secretary.cvhmc@gmail.com](mailto:secretary.cvhmc@gmail.com)**

## **INDOOR BOOT FAIR AT CAPEL VILLAGE HALL**

Lancaster Avenue  
Capel-le-Ferne  
CT18 7LX

**Book your table now  
for just £8**

Contact Kath at:  
[Secretary.cvhmc@gmail.com](mailto:Secretary.cvhmc@gmail.com)  
OR at Farmers Market  
OR on 07376614014

**SUNDAY  
22ND  
FEBRUARY  
9AM – 1PM**

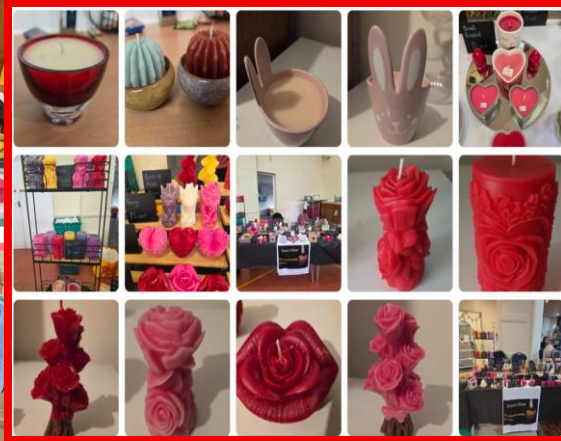
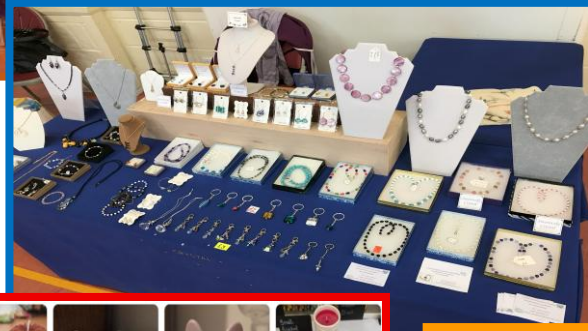




### Community event run by and for the community.

Come to the Farmers' Market, check out the stalls and stay for a cup of tea or coffee.

- > Our bakery, supplied by Vanes of Dover - place orders.
- > Rotherwood Butchers.
- > Julie selling her much-praised cakes.
- > Cheese, Chutneys Jams/Honey. > Indian Snacks.
- > Wooden plaques / signs. - fortnightly. > Zena's Glow (Candles).
- > Various Craft stalls available (cards, jewellery, knitted goods etc).
- > Parish Council surgery, 1<sup>st</sup> Tuesday of month.
- > Community computer access point available, free of charge, if need help with on-line activities.
- > Also available, library/jigsaw loans. > Postal advice/service.







### CHURCH SERVICES FEBRUARY 2026

Alkham	Capel	Hougham
	1 <sup>st</sup> February at 10:00am	
8 <sup>th</sup> February 9:30am		
	15 <sup>th</sup> February at 10:00am	
	18 <sup>th</sup> February at 7:00pm	22 <sup>nd</sup> February at 11:00am

Visit us online at: [www.church-alkham-capel-hougham.org.uk](http://www.church-alkham-capel-hougham.org.uk)  
and on Facebook: <https://www.facebook.com/BeneficeofACH>



Messy Church for families with children is the 2nd Saturday each month,  
February 7th at Capel from 3.00pm - 4.45pm ish!  
Held in St Radigunds' Capel.



**PLEASE NOTE ...**  
**ST RADIGUND'S CHURCH IS AVAILABLE**  
**FOR LETTING PURPOSES**  
• Rates £11 per hour  
(Negotiable for block bookings, local residents).  
• PA/Sound system available • WiFi available.  
• Booking Policy available from Audrey Goaten,  
32 Albany Road, Capel-le-Ferne. CT18 7LA.  
Email: [tryke@audrey47.plus.com](mailto:tryke@audrey47.plus.com)  
Tel: 07869574577

Several people who live in the Village are involved with the Dover Foodbank, and St Radigund's Church has been one of their donation points for many years now - which, it seems, is not as widely known as it ought to be! The Dover Foodbank is associated with the Trussell Trust, and information about how it functions and how people can give and get help can be found on their website: <https://dover.foodbank.org.uk/>  
At church we collect items in our Green Box. When ready, we contact Moira who lives in Old Dover Road, who then arranges for them to be taken to the warehouse.

# Daniel Kirby Roofing & Building

[www.d-kirby-roofing-folkestone.co.uk](http://www.d-kirby-roofing-folkestone.co.uk)



**30 Year's Experience**  
**Reliable Local Roofer**  
**Free Quotes**

**FIND A SAFE, LOCAL TRADER**  
The Only Traders Vetted By Kent Trading Standards



**All Roofing Work • Fibreglass & Felt Flat Roofing**  
**Chimney Building & Repairs • New Roofs • Alterations**  
**Insulated Conservatory Conversions • General Building**

**Tel: 01303 892705**  
**E: [roofersfolkestone@gmail.com](mailto:roofersfolkestone@gmail.com)**

**Mob: 07916 273886**  
**[www.d-kirby-roofing-folkestone.co.uk](http://www.d-kirby-roofing-folkestone.co.uk)**





## CAPEL-LE-FERNE GARDENERS' ASSOCIATION

By the time you read this, it will most likely be February, and the start of a new Gardening Year.

Our first event will be a Quiz Evening, on **Tuesday, 17<sup>th</sup> February, 7:15pm for a 7:30 start**, at **St. Radigund's Church**, Albany Road, Capel.

All are welcome, Members £2, Non-members £3, refreshments included.

Tables of up to 6 people or join another table that has less than 6 people.

Fun prizes for the winning table!

Further dates for your diary:

**March 14<sup>th</sup>,**

**Spring Flower and Produce Show,**  
at the **Village Hall.**



This is an Open Show, so anyone can exhibit in almost all classes. Please contact Bob Parsons for a schedule.

The show is open to the public from 2:30pm with awards at 3:45pm. Refreshments and Tombola available.

Entry FREE for members, £1 for adult non-members, accompanied children also free.

**March 17<sup>th</sup>**, Tuesday meeting at **St. Radigund's Church**, 7:15pm for 7:30 start, a presentation by Janine Doulton on 'Flowers for the Show Bench'. Entry for members is £2, Non-members £3, refreshments included. *(it is possible this event may be swapped with the February event)*

Your Gardeners Association holds nine monthly events at St. Radigund's Church, all on the third Tuesday of each month from February to October, plus the AGM in November, and a Christmas Social for members and their guests, held in December. The Association also provides Spring, Summer, and Autumn Flower and Produce Shows, and an outing to an interesting garden. This year's outing will be to Penshurst Place, and on Sunday, the 14<sup>th</sup> June. Members and Non-members are welcome to all events, with a discounted price for members' entry, and FREE entry to the three Flower Shows. Members also have a quarterly newsletter, updated list of all Capel Gardeners' events, and half price entry to RHS Wisley (and the other four RHS grounds), for two members. That is at any time of the year except for RHS flower shows and RHS glow events. The discount card can be used as often as required so contact us for details.

Members range from amateurs and newcomers to expert growers, advice and guidance is always available to help you get the best from your garden. We are a friendly and supportive group, and new members are always welcome. The membership fee is a modest £15.

There have been a few changes this year, no-one has left the management committee, but Brian Castle has stepped down as chairman, now concentrating on his role as show secretary.

Jean Tanton has also retired as general secretary.

We thank them both for their previous and continuing support.

**Contacts are:**

**Chair: Bob Parsons**, phone 07484 275551,

email [bobparsons@cwgsv.net](mailto:bobparsons@cwgsv.net)

**Secretary: Jean Newell**, email [newell609@btinternet.com](mailto:newell609@btinternet.com)

**Treasurer: Jan Dearing**, phone 07885 643246, email [jandearing@btinternet.com](mailto:jandearing@btinternet.com)



After 11 incredible years, we wanted to share some really difficult and very heartfelt news 😞 — we've made the extremely and difficult decision to sell our business.

This journey has meant more to us than words can say. What started as a small idea, grew into something truly special, not just as a business, but as a way to give back. Supporting our local community, helping those experiencing homelessness, and doing what we could to support others, has been one of the greatest honours of these last 11 years — and something we are deeply proud of. None of this would have been possible without you. Your loyalty, kindness, and encouragement have meant everything to us. We have not just built a business — we have built connections, memories, beautiful friendships and a community that will always stay with us always. Thank you from the bottom of our hearts for believing in us and being part of our journey ❤️ A broken hearted .. ❤️. Jackie and Jane.

Streetz 2 Streetz





## COMMUNITY SUPPORT



### NEIGHBOURS HELPING NEIGHBOURS

A local organisation that aims to support people living in Capel

Staying independent and being part of the community is important to everyone but there are times during our lives when we could benefit from a little help from our neighbours. **CAPELCARES** is a local volunteer organisation run by residents of Capel to support those living in Capel. We can arrange to meet you in your own home to discuss any issues or challenges that you may have. Our volunteers are all local residents who have been DBS checked and have been trained in Safeguarding.

Our volunteers can help you with a variety of issues, including:

- Social visits for those living on their own.
- Home visits to support family carers.
- Assistance with shopping.
- Transport support, i.e. to & from medical appointments etc.
- Small house maintenance/gardening jobs.
- Regular phone contact.
- Helping you make contact with other services.



Referrals can be made by anyone for anyone. Our aim is to help residents in Capel remain safe, secure and independent in their own homes, as well as providing support to residents with unexpected, short term challenges that disrupt routine family life.

### NEIGHBOURS HELPING NEIGHBOURS

To find out more or to arrange a visit please contact Jan on 01303 257003

Capel Cares GOOD NEIGHBOUR coffee mornings are now held every first and third Friday of the month.

To include free tea, coffee or hot chocolate with assorted biscuits.

A regular raffle is held and drawn on the day, with a range of amazing prizes to win.

**EVERYONE WELCOME**

Do you have short term or temporary mobility challenges?  
Maybe from an accident, recent surgery,  
or just aches and pains?



**CC GOOD NEIGHBOURS**  
has a range of mobility aids  
that could assist you.

To include:

- A light weight wheel chair
- A banana board to assist getting from wheelchair to car seat.
- Mobility walker with an integral seat.
- Light weight, 3 wheels, walking frame.
- Aluminium walking sticks with adjustable height.
- Swivel seat pad for use in a car.

These are all available for use, free of charge, on a temporary loan basis.

If any of these aids would be a benefit for you or someone in your family, please contact

Jan Milliken on 257003. or Neil Perrin on 243645.

## Volunteer with us

and make a difference to  
someone's life



Could you spare a few hours a month to help your neighbour? We are looking for community minded people to join CAPELCARES as we seek to assist those in Capel le Ferne who just need a little help to lead independent lives in their own homes.

Call Jan on **01303 257003** for more details

CAPELCARES "from small acorns, mighty oaks will grow"

## CAPEL CARES GOOD NEIGHBOURS are the proud champions of the prestigious KENT MENTAL WELLBEING AWARDS 2025

### CAPEL'S GOOD NEIGHBOURS FREE COFFEE MORNING

sponsored by Capel Cares



The coffee morning guests got 2026 off to an  
amazing start.

They raised over £165 at the last coffee  
morning for 'Aid for Ukraine', supporting the  
supply and delivery of medical evacuation  
vehicles to Ukraine.

CAPEL CARES rounded the donation  
up to £200.

We continue to welcome new guests as we say  
"hello" to  
**OSCAR RODRIGUES**

Do not miss out, come and join us on the  
6th and 20th February

Free coffee morning, every month,  
twice a month!



The next  
**4 GOOD NEIGHBOURS  
FREE COFFEE MORNINGS**

will be held on the 6th & 20th February  
and the 6th & 20th March  
Usual time of 10.00am.



Need transport? Contact Jan on 257003.  
**LOOKING FORWARD TO SEEING YOU  
ON THE 6th and 20th February**

We will be there, will you ☺?



**EXTRA DATES FOR YOUR 2025 DIARY**  
6th & 20th March and 3rd & 17th April



# Welcome everyone, to 2026

**We finished 2025 on a high, through the year the volunteers responded to more than 130 transport requests for medical appointments and have done over 100 shopping trips.**

**A number of DIY tasks; supplying and fitting key safes, replacing fluorescent tubes with new LED tubes and starters. Additional items made available for guests include jar-keys, ring pull can opener and easy electrical plug pull. All remain available to buy at cost.**

**On 11th November, Remembrance Day, Jan Milliken laid a wreath at the memorial stone on behalf of Capel Cares. Wheelchairs and walkers have been in greater demand throughout 2025, with other mobility aids available for loan.**

**Some excess equipment has been donated and sent to Ukraine, where demand remains high.**

**Our afternoon tea event had over 60 guests, all delivered with a smile by the Folkestone Bowls Club. The Christmas lunch had over 70 guests well fed over two sittings, with thanks going to the Royal Oak for looking after us in**

**December. The fish ‘n’ chip lunch in September was another success, thanks to D’Agostini’s**

**The twice monthly coffee mornings regularly welcomed 40 plus guests, appreciating tea and biscuits, celebrating birthdays, enjoying a raffle and a challenging quiz.**

**2025 saw us welcome Capel Crafty Covers to our coffee mornings, sharing the benefits of Capel Cares while creating their artistic crocheted and knitted pieces.**

**The Poppy backdrop for the memorial service and the regular post box toppers as examples. Smaller gift items to purchase are always available.**

**The generous donation of over £750 from the Capel Scarecrow Festival to CAPEL CARES has allowed us to buy new green gingham table clothes.**



## BIRTHDAYS

**In December we celebrated special birthdays with Carol and Jean and then into 2026, with January birthday celebrations with Ginny, Jan, Christine and Jean.**



**December also saw us enjoy a fabulous Christmas dinner at the Royal Oak.**



Capel-le-Ferne with Alkham WI began the new year with a visit from the RNLI. The speaker gave a fascinating and informative talk about the history of the RNLI, from its inception just over 200 years ago, and then more specific information about the lifeboat station at Dover. Andy's talk was illustrated and, he also had film footage of their work in the Channel. Our local lifeboat is in action on average 2 a week and is due a new lifeboat in the near future.

Andy and his assistants brought a pop-up shop with them, which contained an amazing array of goodies for sale – Christmas cards, key rings, mugs, tea towels, to name a few. The Dover RNLI has a shop as part of its new HQ building, which all are welcome to visit.

After refreshments and the business side of the meeting, we had a quiz based on the theme The Sea! There was a tie for first place with 2 teams getting 7.5 points out of a possible 12, from what was an eclectic, but quite difficult quiz. The evening ended with the drawing of the raffle.

**Ladies you are very welcome to come and join us.  
You can visit for 3 months at no cost before deciding  
if you would like to become a member.**

**theWI**  
INSPIRING WOMEN

**CAPEL-LE-FERNE with ALKHAM WI**

**Our next meeting will be at 6.45pm for 7pm at  
Capel-le-Ferne Village Hall**

**February meeting is social evening with  
Fish and Chips - no speaker.**

**March is our AGM meeting**

**Our Activities include:**  
 Monthly speakers  
 Outings to places of interest  
 Home Economics  
 Darts, Book Club  
 Competition and Quizzes  
 Annual garden party Craft Club  
 Scrabble Club  
 Lunch Club

Please feel free to come and join us.  
 For more information, please contact  
 Caroline on 07885 406433

**We look forward to welcoming you**



### **A reason to join the W.I**

My first visit to a W.I Meeting was coming up soon. I was somewhat nervous and apprehensive. A lot of public conceptions regarding this organisation is that it is a group of 'experienced' ladies, making Jam and then singing about it!

I asked various friends if they would come with me 'to see what it was like', just the once.

'Oh no, I am not joining that group', they mocked, it is old fashioned' Did you not watch the 'Calendar Girls'?

Eager to see for myself, the evening had arrived.

I slowly walked into the Village Hall, I turned the door handle and opened it.

And then I saw it ... a room full of ...wait for it, normal women. Shock horror. I have never received such a warm welcome and felt an immediate feeling of genuine friendliness from people I had never met before. I felt right at home.

And guess what / Not a jam jar in sight! A room full of interesting women of all ages and backgrounds.

After, I was introduced to everyone there was a short meeting which covered various events for the diary: fund raisers, announcements from the lunch club, book club and various social events.

Hang on a minute, this is starting to sound good! Then it was time for our speaker for the evening. There was a fabulous demonstration and a talk. I asked does this happen every time? Oh yes, most months we have a speaker, was the reply, good, isn't it? I was then offered tea and biscuits; a raffle was drawn.

That was a couple of years ago now, today I am proud to belong to the W.I and to this day, like my first 'just the once' day I still get a genuine warm welcome every time I arrive but not from strangers but from the members of the W.I... I am privileged to call my friends.

**Anonymous**





### Battle of Britain Memorial - Remembering the Few

The support that we have received from you all is something that we will always be so grateful for. It is your support and donations that help us continue our work to remember 'the Few' in these difficult times. If you wish to make a donation to the Memorial Trust, please click here for more details: <http://ow.ly/EkKh50DboEb>

It is free entry to the Memorial and The Wing.

The Scramble Experience inside is our only paid-for attraction, and there is a nominal parking charge. We always welcome donations to keep this wonderful place running, though.

♥ Give love, history and adventure This Valentine's Day ♥  
Treat someone special to an unforgettable day at the Battle of Britain Memorial:

✈ Personal guided tour: Explore life-size Spitfire and Hurricane replicas and hear stories from our expert guides.

🎬 The Scramble Experience: Step inside The Scramble Experience and dive into the history of the Battle of Britain, complete with an immersive film that brings the story of 'The Few' to life.

☕ Cockpit Café: Enjoy a cream tea with stunning sea views. Prosecco upgrades available!

Experience vouchers start from just £30. Grab yours here:



<https://tinyurl.com/ba8f3cvr>



Grab a bite to eat at the Cockpit Café while visiting the Battle of Britain Memorial, from cream teas to paninis and toasties, we have got everything you need for a perfect pit stop. You will also enjoy breathtaking views across the Channel to France.

See menus here: <https://tinyurl.com/34ynhc3k>

The Wing, car park, and Cockpit Café will be open Tuesday to Sunday, from 10am to 4pm. But, do not worry! If you want to visit the Memorial outside these opening hours, you can still access the outside grounds on foot via the pedestrian gate.

The Battle of Britain Memorial Trust is now including access to its popular Scramble Experience as part of new opening arrangements aimed at providing much-needed funds for the cliff-top tribute to the Few.

The Trust, a charity that receives no central or local government help, has introduced a charge for those entering The Wing, its modern, Spitfire wing-shaped visitor centre, although access to the rest of the site remains free.

Trustees have pointed out that the impact of the cost-of-living crisis, along with insurance and energy price rises and increased business rates, National Insurance and wages costs, have had a big impact on its finances.

The new charge, which is cheaper than the previous entry charge for The Scramble Experience, will allow visitors to the Experience, shop, toilet and café, although those who just want to use the café will still be allowed to do so for free.

The Trust has pointed out that with running costs now well over £250,000 a year, keeping the whole site open for free and relying on the generosity of visitors was no longer a viable option.



Home to the National Memorial to the Few and The Scramble  
New Dover Road (B2011), Capel-le-Ferne,  
CT18 7JJ. Tel: No: 01303 249292

<https://www.battleofbritainmemorial.org/>

Facebook Page: <https://www.facebook.com/rememberthefew>

Join us as we honour the courageous Few who defended our skies during the Battle of Britain. Our major appeal is dedicated to enhancing our cliff-top site for the next generation. But we cannot achieve this without YOUR invaluable support

Our goal is to raise £1m to extend running costs and create an extraordinary, state-of-the-art aerial dog fight simulator experience.

Imagine yourself in the cockpit of a Supermarine Spitfire or a Messerschmitt Bf109, engaging in thrilling battles that replicate the challenges our courageous aircrew faced in 1940.

This extension will not only provide exhilarating simulators but also additional space to display more Battle of Britain artefacts.

As a charity that relies on the generosity of our supporters, with no government support,

we can only achieve this dream with you by our side.

Every donation, no matter the size, gets us closer to our ambitious £1m goal. With your contribution, the Memorial will continue to inspire and educate future generations.

Don't miss the opportunity to be a part of history. Donate here :

<https://battle-of-britain-memorial-trust.raisely.com/>



### COCKPIT CAFÉ



### EVERY 1<sup>ST</sup> SUNDAY OF EACH MONTH CLASSIC CAR MEETINGS - NEXT MEETING 1<sup>ST</sup> FEBRUARY



Home to the Battle of Britain Memorial -  
Remembering the Few and The Scramble,  
New Dover Road (B2011), Capel-le-Ferne, CT18 7JJ.  
Tel: No: 07956 292376.







# CAPEL-LE-FERNE PARISH COUNCIL

## Summary of some items discussed at meeting held

### Tuesday, 20<sup>th</sup> January 2026



#### **Requests from public and Other Feedback:**

- Further comments on proposed Anaerobic Digester.
- Concerns on vegetation cleared at Longships, Cauldham Lane.

#### **Matters Concerning the Parish:**

##### **Flooding - Capel Street/Lancaster Avenue:**

A very positive update on surveys is progressing, as discussed at last meeting with Flood Forum. Part of the topographical survey will be along the line of the flood alleviate drain. Confirmation given that the Parish Council had no objection to the survey crews undertaking those works at the recreation ground. There will also be some additional CCTV surveys.

##### **Land Gifted to Parish Council:**

**Benches.** One plaque on respective bench fitted, wording on other still being considered.

**Future Plans:** The following was discussed and agreed; no more benches at present due to amount already in situ, an investigation of access suitable for all, including that to the waste bin from roadside.

- **DDC owned Street Lighting:** Repairs chased with DDC. Hopefully a positive outcome forthcoming.

- **Inconsiderate Parking:** Concerns raised and discussed.

#### **Planning:**

- Recent applications received; Resolution agreed on responses.

- **All planning application documents and comments**  
Available to view on Dover District Council website:

#### **Neighbourhood Watch (NHW):**

- Community Warden reported on concerns raised regarding pony grazing on Old Dover Road. This had been investigated by Police and the RSPCA notified.

#### **CCTV/ICT:** Nothing to report

#### **Playing Field and Equipment:**

- Refurbish paintwork on MUGA (multi-use goal area) waiting dry weather!!
- BMX trail-bars to be removed – on contractors list.
- Repairs to hinges on both gates at junior play area, due to use/wear. Agreed to accept a contractor's annual maintenance service in future.
- Feedback on improvements to skate-park noted.

#### **Traffic Management and Highways:**

**Highway Improvement Plan (HIP):** The following items to be put forward at annual meeting with Kent Highways.

- Chevron signage Capel Street, junction Hockley Sole.
- Double yellow lines/stop signs, junction Alexandra and Victoria Road.
- Lorries in Layby, outside old Café, before Royal Oak.
- Vehicle activated signs (VAS), on New Dover Road (B2011):** Waiting installation and invoice amendment.
- Drop kerbs, Beatrice Road:** Retrospective tactile paving and additional drop kerbs – scheduled date changed for installation to March 2026.
- Hurst Lane:** Waiting further work. Will check when done.
- Diversion signs M20/A20 - Roundhill Tunnels closed.**  
Pending photographic evidence to pursue.

#### **Public Rights of Way (PROW):**

- **Green Lane** metal bollards broken and trip hazard. Reported to KCC PROW for new bolts and padlocks.
- **Fly tipping** on Green Lane to be checked further by Councillor and reported accordingly.

#### **Speed Watch:**

- No report as no sessions undertaken, due to weather conditions. (*See Page 13*), with recruitment details and chart leader details.
- Session results available on Parish Council Website.  
<https://capellefernepc.org.uk>

#### **Events:**

- **Afternoon Tea for volunteers** – venues and costs to be re-investigated.

#### **Capel Cares:** (*Details pages 6 and 7*).

- Continues to have 45+ guests attending coffee morning.
- Fund raising and sponsorship of £200 donated to local young person, to support in the supply/delivery of 4x4 medical evacuation vehicles in Ukraine.

#### **Grapevine Newsletter/social media:**

- Delivery of next issue confirmed.

#### **Village Hall (VHMC):** (*See page 2*)

- Councillors agreed new hiring charges and annual agreement.

#### **Training/workshops/seminars:**

Two (2) Councillors attending a workshop at DDC offices on reviewing the Village Resilience Plan.

#### **District and County Councillor reports:**

**District Cllr. Martin Hibbert:**

- Useful guide that Ward Councillors should be made aware of on harassment, abuse, and intimidation.
- Advice to visit the latest KCC update, especially the highways consultation section.

**County Cllr. Paul King:**

- Full report attached to minutes, included comments on; thanks for all residents' comments received on various items, Council Tax increase of 3.99% with particular key areas covered and his new role in KCC.

#### **KALC Annual Award:**

Decision agreed and nomination submitted.

#### **Devolved KCC Grounds Maintenance:**

Agreed by Councillors to continue, and clarification submitted to KCC accordingly for 2026-2027 new Agreement and Appendix C - Health and Safety Self-Certification.

#### **Draft Budget and Precept 2026-2027**

Councillors reviewed and confirmed.

- Salary increments increase, as per National Joint Councils' Local government services pay agreement.
- Grapevine Newsletter adverts, a slight increase of £2 per advert, on 2 sizes.
- Parish Precept for next financial year, an increase of 3.78% (i.e. approx. £3.29 per annum, per household).





**Is there an issue you wish to discuss with your Parish Council?**  
**Councillor and Clerk**  
**will be available**  
**on**  
**Tuesday, 3<sup>rd</sup> February 2026**  
**10am to 12:00noon**  
**at The Farmers' Market**  
**in Room adjacent to Entrance,**  
**Capel-le-Ferne Village Hall,**  
**Lancaster Avenue,**  
**Capel-le-Ferne, CT18 7LX**

**NEXT COUNCIL MEETING WILL BE**  
**TUESDAY, 17<sup>th</sup> FEBRUARY 2026, 7.30PM.**


MINUTES/AGENDAS AVAILABLE ON THE COUNCIL  
 WEBSITE: <https://www.capellefernepc.org.uk/>

MEETINGS OPEN TO PUBLIC.  
 IF YOU WISH TO ADDRESS THE COUNCILLORS,  
 PLEASE INFORM CLERK  
**GIVING 48 HOURS NOTIFICATION**  
**AND THE SUBJECT OF YOUR ADDRESS**

Further information on any of the above  
 or to contact Parish Council, please write to Parish Clerk,  
 39 Victoria Road, Capel-le-Ferne,  
 Email: [clerk@capeleferneoc.org.uk](mailto:clerk@capeleferneoc.org.uk)  
 or Tel: 01303 259564.

**PRIVATE TUITION 4-11 YEARS**

Kent Test Boost - Confidence Building - Help With SATs  
 Special Needs Support - Enhanced DBS check  
 Supportive & Experienced Primary School Teacher  
**Fiona Bill, BA(Hons) PGCE 07817 066978**




Dear Capel village residents.

Thank you so very much for your amazing kindness of donation the coats to our service. We at the Rainbow Centre Homeless Support Service work alongside all the street homeless people of Folkestone and the surrounding area. We rely on the kindness of local residents and businesses to donate all kind of things to help with the support we can provide to our clients.

We have a clothes rail in our reception area where people can help themselves to an item or two, this works well as people do not need to ask and it spares them any awkwardness. The coats were very popular and snapped up very quickly. Your generosity will help a lot of people to stay warm in the coldest of months. If anyone would like to donate in the future, please be reassured that we appreciate all suitable clothing and other donations for both ladies and men. If you would like any more information about the service we provide, please contact me at the Rainbow Centre on 01303 850733 or email me [jane.suckling@rainbow-centre.org](mailto:jane.suckling@rainbow-centre.org)

Again, many thanks, Jane Suckling, Homeless Support Service Manager






**⚠ BE ALERT and STAY SAFE ⚠!! REMINDER!!**

This is a reminder for having control over your animals on and near roads, PLEASE.

On multiple days and a regular occurrence, we have a few individuals, walking their dogs off leads down Old Dover Road, with little to no control. Dogs running up and down the road, off to other dogs on the lead and recently, nearly under a car! Please be considerate of the driver, as this anti-social behaviour of dogs out of control, could cause an accident, and no-one wishes that!

Old Dover Road is 20mph, but vehicles do exceed the limit and in places there is no footpath. It is well known for poor visibility and people walking down the road, in dark clothing, with dogs off a lead and no control, is asking for an unhappy ending. So please, drivers do not exceed the speed limit and walkers, wear something bright so you can be seen, including the dogs. Please also ensure all field gates are closed so horses etc., do not escape.






**TRADING STANDARDS**
**BE AWARE and STAY ALERT**

**TRADING STANDARDS**
**REPORT SUSPICIOUS ACTIVITY Call 999 if:**

- \* a serious offence is in progress or has just been committed.
- \* someone is in immediate danger or harm.
- \* property is in danger of being damaged.
- \* a serious disruption to the public is likely.

Call 101 for non-emergency enquiries.

Or online <https://www.kent.police.uk/contact/af/contact-us/>


**KEEP KENT SAFE  
LATEST ALERTS**


A TV Licence phone scam is targeting residents. One victim lost thousands of pounds after being contacted by someone claiming to be from the BBC warning about a fake issue with their TV Licence. The BBC and TV Licensing will not contact you by phone to demand payment or personal information. Be wary of unexpected calls, especially if you're pressured to act quickly or make a payment. Never share bank details, passwords or one-time codes with someone who contacts you out of the blue.

Acid attacks are on the rise – and the UK has more than any other country. These attacks cause horrific injuries and trauma. We're working with retailers to restrict access to corrosive substances – but we need your help too. Report suspicious behaviour to the charity Crimestoppers on 0800 555 111.

You'll stay 100% anonymous, always.

If you feel threatened dial 999 to contact the police.

**#ScamAlert**

⚠ We've received reports from residents about an increase in fake parking fine messages, usually sent by text.

✗ These messages often look convincing but always contain very little detail, usually not citing any vehicle registration, location or date and time of the alleged offence

✗ Many include a link to "pay the fine" — but it leads to a fake website designed to steal your personal and financial information.

The DVSA will NEVER send parking fine notifications like this. Always do your research if you receive something like this and never click any links.

📧 Report to:

Citizens Advice Consumer Helpline:

<https://loom.ly/5j18s4U>

Kent Police: <https://loom.ly/kg53yqQ>

**For advice and to report issues to KCC Trading Standards contact:**

[Citizens Advice consumer helpline](https://www.kent.gov.uk/citizensadvice) on 0808 223 1133

[Consumer Advice scams action line](https://www.kent.gov.uk/citizensadvice) on 0808 250 5050

Monday to Friday from 9am to 5pm.

**Action Fraud**  
National Fraud & Cyber Crime Reporting Centre  
**0300 123 2040**

REPORT TO CRIMESTOPPERS

<https://crimestoppers-uk.org> 0800 555 111

[Trading Standards Checked \(kent.gov.uk\)](https://www.kent.gov.uk/tradingstandards)

REPORT TO CITIZEN'S ADVICE HELPLINE 0808 223 1133

<https://www.citizensadvice.org.uk/>

Dog owners in Kent are being urged to keep control of their pets in the countryside following a rise in attacks on sheep. The Back British Farming NFU and Kent Trading Standards are working together to encourage pet owners to obey the Countryside Code and ensure their dogs are kept under control as lambing season gets under way. Visit Explore Kent to read the Countryside Code.

Costco recall for Forest Feast Belgian Milk Chocolate Jumbo Raisins because the product may contain peanuts and nuts which are not mentioned on the label. Product details Name: Belgian Milk Chocolate Raisins Pack size: 1kg Batch code: 5344136460, 5345136460, 5346136460 Best before: 31 December 2026 Advice for consumers If you bought this product and have an allergy to peanuts or nuts do not eat. Return it to the store for a full refund.

Appliances work hard for you every day so ensure they will keep ticking over nicely by registering them.

📧 Easy and free at [www.registermyappliance.org.uk](http://www.registermyappliance.org.uk) so you'll know if ever a safety repair is needed.

\*\*\*\*\*

**How to get advice and report.**

To report scams and get advice on consumer issues call Citizen's Advice consumer helpline on 0808 223 1133 If you have information on doorstep criminals, counterfeit, fake or illegal goods, illicit tobacco, loan sharks or those selling restricted items to underage kids, call the charity Crimestoppers 100% anonymously on 0800 555 111

To find a safe, local trader use Kent County Council's safe trader scheme: Trading Standards Checked.

To find a member call 03000 416438 or visit [kent.gov.uk/tschecked](https://www.kent.gov.uk/tschecked)





## CAPEL-LE-FERNE YOUTH CLUB

We meet every 1st and 3rd Thursday,  
7.30-9.30pm, during term time,  
apel Village Hall, Village Hall, Lancaster Avenue  
Tel: 07860 803767.

Email: [capelyouthclub@outlook.com](mailto:capelyouthclub@outlook.com)

Facebook: <https://www.facebook.com/capelyouthclub>



### Capel Youth Club Activities – Q1/Q2 2026

Activities – We are open again from Thursday 15<sup>th</sup> January 1930-2130hrs

- 15/1 Footy, Consoles, Pizzas, Crafts
  - 29/1 Bowling – Ashford, See Handout
  - 5/2 Basketball, Valentine Pancakes, Consoles, Crafts/Crochet Fun
  - 5/3 African Drumming, Pizzas, 1<sup>st</sup> Aid Training including CPR
  - 19/3 "James Activ" – Indoor fitness, Fruit Kebabs, Table Games
  - 2/4 Easter Egg Hunt, Table/Team Games, Easter Nests, Easter Egg Crafts
  - 30/4 Laser Wars (@Kidz Planet) – See Handout
  - 7/5 Outside Footy / Rounders, Rio Ice Cream
  - 21/5 Outside Park Activities, DIY Banana Splits / Ice Cream Sundaes
  - 4/6 "James Activ" – Outdoor fitness, Park Activities, Fruit Stall
  - 18/6 Tag Archery, Park Activities, Smores
  - 2/7 Scavenger Hunt, Park Activities, Chips
  - 16/7 Party In The Park – Welly Throwing, Park Activities, Just Dance, Summer Buffet
  - Sat 27/6 Howletts Trip (tbc) – See Handout
- Food activities included in entry cost – Children do not have to pay extra



### Capel Youth Club Activities – Q1/Q2 2026

- COVID – Please ensure your children only attend Youth Club if they are free from covid contact within the last 10 days & showing no symptoms of their own.
- Membership – Entrance fee on the night of £5 per child, no membership fee
- Gaming Consoles – PS3, Wii, Xbox 1, & Switch – All games are under 16's, no internet access (Do Not bring own games)
- Park activities - Bikes/ Scooters brought at own risk for use on ramps, helmets recommended to be worn – Own Risk, we only use park when organised activity.
- Mobile Phones - Please leave at home unless really necessary, or hand in on arrival
- Safeguarding Compliance - All children must be collected from within the hall

Activities updated on Youth Club Facebook page: [www.facebook.com/capelyouthclub](https://www.facebook.com/capelyouthclub)

Dates for your dairies, please support our fund raisers:

- 7/3 Family Bingo – Raffle, Heads n Tails & Bonus Ball (Children welcome)
- 2/4 Easter Hamper Raffle
- 25/6 AGM – Village Hall 1900hrs
- 27/6 Howletts Trip
- Oct 26 Quiz Night, date tbc



2



## D.E. Roofing

Roofing and General Maintenance  
All aspect of roofing work undertaken

Including –

New Roofs, Extensions, Repairs, Flat Roofs,  
Leadwork, Roof Windows, Fascia/Soffits,  
Guttering, Chimney Works, Moss Removal,  
Bird Nest Preventions

Interior/Exterior Painting and Decoration,  
Patio Cleaning

Free Quotations – Fully Insured

Home: 01303 982116

Mobile: 07890 746664

Email: [Darren@de-roofing.co.uk](mailto:Darren@de-roofing.co.uk)

Find us on [Trustatrader](https://www.trustatrader.com)





**Kent  
Police**

14



**Kent  
Police**



## Volunteers wanted



Would you like to help protect our residents from speeding vehicles?  
Could you spare 1 – 2 hours a week?

If so, we would love you to join our enthusiastic Speed Watch Team.

Community Speed Watch is an educational scheme to help reduce speeding traffic through our Village.

The scheme enables volunteers to work within our Village to raise awareness of the dangers of speeding and to help control the problem locally. If you are interested and would like to talk to someone about becoming a team member, contact the Parish

Clerk on 01303 259564, Email: [clerk@capellefernepc.org.uk](mailto:clerk@capellefernepc.org.uk)

### DAILY ACTIVITY



**CAPEL-LE-FERNE SPEEDWATCH GROUP RESULTS & RECRUITMENT**  
**INSTRUCTIONS ON PARISH COUNCIL WEBSITE**  
[Capel-le-Ferne Parish Council \(capellefernepc.org.uk\)](http://Capel-le-Ferne Parish Council (capellefernepc.org.uk))

**Since last publication: No sessions taken place!**

Community Speedwatch (CSW) is a road safety initiative that's coordinated by Kent Police and run by local communities.

Trained volunteers monitor the speeds of vehicles using approved 'speed indication devices' (SIDs).

The aim of the initiative is to:

- reduce death and injury on the roads
- improve the quality of life for local communities
- reduce the speed of vehicles to the speed limit
- increase public awareness of inappropriate speed

**Thank you for driving within limits!**

Capel Street &  
Old Dover Road



**Speed  
Limit**

New Dover Road  
(B2011)



**Speed  
Limit**



# JDM RENOVATIONS

**YOUR TRUSTED LOCAL BUILDING EXPERTS**

We specialise in all aspects of residential construction, including:

- Extensions
- Full Project Renovations
- Brickwork & Structural Alterations
- Conversions
- Interior Works
- General Building Works
- External Works

**Contact Us!**

Website: [www.jdmrenovations.co.uk](http://www.jdmrenovations.co.uk)

Call: 07359 356675

Email: [projects@jdmrenovations.co.uk](mailto:projects@jdmrenovations.co.uk)





01303 847899

homeinstead.co.uk/folkestone

*Live well, your way  
with the care in your own home!*

- ✓ Personal Care
- ✓ Companionship Care
- ✓ Home Help
- ✓ Dementia Care
- ✓ End of life Care
- ✓ Live in Care

#### Home Instead

Folkestone, Hythe & Ashford

300 Cheriton Road

Folkestone, Kent, CT19 4DP

accounts.folkestone@fha.homeinstead.co.uk

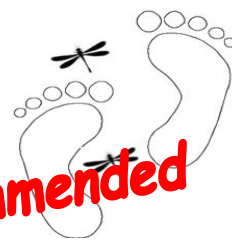
www.homeinstead.co.uk/folkestone

## Barton Mobile Foot Clinic

Professional footcare  
in the comfort of your  
own home.

Visits from £32.00

**Highly recommended**



All routine footcare undertaken; nail cutting (including diabetic clients), with treatment and advice if required on - corns, callus, verrucae, cracked heels, athletes' foot, fungal nails, ingrown and involuted toenails.  
Dementia friendly.

**To book an appointment:**

**Mobile - 07944017532**

**Email -**

**bartonfootclinic@outlook.com**

**Toni Dip FH MCFHP MAFHP**

## E-scooters – are you breaking the law?



**Can I ride my e-scooter to school or work?**

**No, it's Illegal...**

E-scooters are classed as motor vehicles and are required to be taxed and insured. It's not possible to get insurance for privately owned e-scooters, which means it's illegal to use them.

**Can I ride my e-scooter on the pavement?**

**No, it's Illegal...**

You cannot use e-scooters on public footpaths, cycle lanes or roads.

**What happens if I'm caught using my e-scooter in public spaces?**

**The scooter may be seized and as a result, destroyed.**

If stopped by an officer, you may be asked to complete a breath and drugs test. You also risk a £300 fine and six penalty points on your licence for no insurance.



**Kent  
Police**

#### Think before you buy:

The number of electrical scooters being used on our streets has risen, as well as reports of serious injury and fatalities. For more information and advice on the use of e-scooters visit [www.kent.police.uk/road-safety](http://www.kent.police.uk/road-safety)

## Stephen Huxtable Garden Services

- Private and commercial garden and grounds maintenance
- Grass cutting, Hedge cutting, Garden clearance, Turfing.
- High quality fencing supplied and erected

**Free estimates**

**01303 891720**

**www.shgardenservices.co.uk**

## Pro Services – Paul Relf Optimum Services

4 Queen's Lea, West Hougham, CT15 7BJ.

Tel: 01304 214166. Mobile: 07787 910961

[paulrelf@hotmail.co.uk](mailto:paulrelf@hotmail.co.uk)

**No job too small**

Property maintenance, handyman,  
Serving Capel residence since 2012

**PLEASE ENQUIRE FOR ANY JOBS NOT LISTED**



## CAPEL CRAFTY COVERS

We have planned the year for post-box toppers, both outside the Village Hall and School.

**A plea please!**

- **Dark brown DK wool for the topper base - it usually takes nearly two balls.**
- **We are going to run a raffle at the Farmers' Market on occasions, to raise some funds.**

**Donations for this would be most welcome.**

**Also, any raffle tickets.**

That's all until the next round.

Thank you.

*All donations can be taken to Farmers' Market on any Tuesday.*

*10am - 12 noon*

## CAPEL BAPTIST CHURCH

### **Preachers for February**

<b>1<sup>st</sup> Feb</b>	<b>Pam Barr</b>
<b>8<sup>th</sup> Feb</b>	<b>Rev Katy Ruddell</b>
<b>15<sup>th</sup> Feb</b>	<b>Richard Blackwell</b>
<b>22<sup>nd</sup> Feb</b>	<b>Belinda Walker</b>

Messy Church for families with children is the 2nd Saturday each month 3pm - 4.45ish!  
Held in St Radegund's.

Messy Vintage for adults is alternate Thursdays next one being 29th January at 2.30pm at the Baptist Church - all are welcome.

Prayer breakfast each month - last Saturday in the month at 0930 Baptist Church - all welcome

For details of Preachers or if there are queries regarding these details,

please call 01303 489006 - Pam Barr

Please! A reminder that the public are requested not to park in front of the gates on Sunday mornings as this is a disabled access.



## Self Storage 20ft x 8ft



New containers,

Secure yard

Easy In/Out Terms

**£120 per calendar month**

**TEL: 07850 834782**



Dave Parker Services  
Capel-le-Ferne

## JACQUI

**SALON and MOBILE  
HAIRDRESSING  
Reasonable Prices**

**CALL 01303 250655 or 07968 967057**

**For an appointment**

**PERMS AND SETS AVAILABLE  
IF REQUIRED**

## GRAPEVINE ADVERTISING

**Charges from 1<sup>st</sup> April 2025**

**This space could be advertising your commercial/  
business venture or, non-Village organisation event.**

Size 9cm x 3.5cm £16.00

Size 9cm x 7cm £23.00 (£25 from April 2026)

Size 9cm x 13cm £32.00. (£34 from April 2026)

Size 20cm x 13cm - £40.00 (½ page)

**For further details contact**

**Parish Clerk at 39 Victoria Road,**

**or Tel: 01303 259564.**

**Email: [clerk@capellefernepc.org.uk](mailto:clerk@capellefernepc.org.uk)**





# Capel Short Mat Bowls Club

*Bowling since 1987*

## Contacts

**Wendy (Chairperson) Tel: 259120 - Ros Tel: 07367 447434 - Rachel 07853 193935**  
**Anyone in the Village wishing to try the short mat bowls, please contact above numbers.**

**🏆 CSMBC CURRENT CHAMPIONS OF THE SHEPWAY SUMMER LEAGUE 🏆**

**CSMBC WISHES EVERYONE A HAPPY, HEALTHY AND PROSPEROUS 2026**

## EAST KENT WINTER LEAGUE

We currently hold 2nd place in this league, having played 8 games and scoring 36 points. Herne Bay sit top of the league with 49 points, but they have played 11 games.

So, while we are 13 points behind, we have 3 games in hand.

Our next two games are against Boughton, at home on the 22<sup>nd</sup> January, and away on the 29<sup>th</sup> January.

Hopefully our league position will improve after these two matches.

## SHEPWAY WINTER LEAGUE

After the festive break the latest league tables shows Capel Kiwis lying in third place.

With one game in hand over Lympe (lying second) they have a 2-point advantage over the Kiwis. **WE'RE COMING FOR YOU!!**

Hawkinge hold top spot on the same games played, they have a 4-point lead over the Kiwis. Here is the warning....  
**WE'RE UP FOR THE CHALLENGE.**

## CSMB CLUB COMPETITIONS

After a seasonal hiatus the club competitions are now going at a pace, with singles, pairs and drawn pairs being played at every opportunity. Play your part, play your match, become a club champion.

Finals Day is planned for the 29<sup>th</sup> March, with club champions being announced at the April AGM.



## WE ARE MORE THAN A BOWLS CLUB

**On the 12<sup>th</sup> December**  
 club members and guests gathered  
 for the annual Christmas dinner  
 at the Folkestone indoor bowls centre.

**The Christmas social was held  
 on the 21<sup>st</sup> December.**



All members and guests enjoyed the experience of New Age Kurling, with Barry and Andrea coming out on top. Followed by a game of Target Bowls, with Andrea and Paul M getting the highest scores.

This was all followed with a buffet style festive feast and a digestif to help it down.

And to round off the afternoon teams were challenged with a quiz while waiting for the raffle prizes to be drawn.



## NOTES FOR YOUR DIARY

🍷🍷🍷 On Easter Sunday, 5th April we are planning to hold our usual buns and bowls event. 🍷🍷🍷

The CSMBC AGM is due to be held on the 26<sup>th</sup> April, in the village hall at 2pm.

We have a provisional date of the 19<sup>th</sup> August for an invitation match at Kearsney bowls club on an outdoor green. We shall reciprocate later in the year, inviting Kearsney to a short mat game on our 'turf.'



## FUNDRAISING UPDATE

### Folkestone Christmas Tractor Run

All the money from the collection buckets have now been counted, and we're blown away by your generosity!

A huge thank you to everyone who has donated – your support will make a real difference for ❤️ Touchbase ❤️

And thank you to the local businesses who sponsored equipment, venues, and prizes.

We truly appreciate your support:

Henry Burrows with Folkestone Christmas Tractor Run



Parking on pavements and over drop kerbs, can cause real problems for pedestrians, but particularly for wheelchair users, people with visual impairments and those with prams or buggies.



Please do not park on the pavements, or over drop kerbs, causing others to use the road.

Be considerate of walkers, wheelchair, mobility scooters and pushchair users.

Pavements and drop-kerbs are for pedestrians not cars!



Zigzag lines outside schools  
Keep Zig Zags Clear



The yellow zigzag markings outside schools are in place for the safety of children - YOUR children.



These markings indicate areas where motorists should not wait, stop, or park, especially during restricted times, particularly during school hours. They are a crucial safety measure to ensure the smooth flow of traffic and visibility for both drivers and pedestrians.

It is essential for drivers to adhere to these regulations to maintain safety and prevent accidents, especially for children (*your child*), who may not yet be aware of traffic risks.



**Please and thank you**



<b>USEFUL CONTACTS INCLUDING ACTIVITIES and CLUBS</b>	<b>CONTACT NAMES</b>	<b>TELEPHONE NUMBER or EMAIL</b>
Police Officer	Cheryl Ellis	Kent Police 101
Community Warden	Jan Henry	07811271303 Email: <a href="mailto:jan.henry@kent.gov.uk">jan.henry@kent.gov.uk</a>
Parish Council Chair	Philippa Seager	01303 245254
Parish Council Clerk	Maureen Leppard	01303 259564 Email: <a href="mailto:clerk@capellefernepc.org.uk">clerk@capellefernepc.org.uk</a>
Dover District Ward Councillor	Martin Hibbert	<a href="mailto:Cllr-Martin.Hibbert@dover.gov.uk">Cllr-Martin.Hibbert@dover.gov.uk</a>
Kent County Ward Councillor	Paul King	<a href="mailto:Paul.King@kent.gov.uk">Paul.King@kent.gov.uk</a>
Village Hall Webmaster/Chairperson	Sally Cook	01303 253838 / 07730475838
Village Hall Committee Trustee Secretary / 100+ Club	Kath Hounsell	07376 614014 <a href="mailto:secretary.cvhmc@gmail.com">secretary.cvhmc@gmail.com</a>
Village Hall Committee Lettings	Sue Leaning (Email preferred)	07939 095880 Email: <a href="mailto:sue.lettingscvh@gmail.com">sue.lettingscvh@gmail.com</a>
Village Hall Farmers' Market	Sally Cook	01303 253838 / 07730475838
Village Hall Committee Treasurer	Sarah Leonard	<a href="mailto:sarahbridgland74@hotmail.co.uk">sarahbridgland74@hotmail.co.uk</a>
Village Hall Committee Trustee	Roy Mann	07725943261
Village Hall Committee Trustee	Jerry Watson	07811987254
Village Hall Committee Trustee Vice Chairperson	Caroline Bunting	Email: <a href="mailto:c.bunting@btconnect.com">c.bunting@btconnect.com</a> 07885 406433
Bridge Club	Bob Jones	01233 756362
Capel Baptist Church	Pam Barr	01303 489006
Capel Cares and Ukraine	Janet Milliken	01303 257003
Capel Walkers	Neil Perrin	01303 243645
Gardeners Association	Jean Newell	Email: <a href="mailto:newell609@btinternet.com">newell609@btinternet.com</a>
Household Bill Savers	Phil and Karoline Taylor	01303 246887
Judo	Colin Carrott	01303 211594 / 07917131571
Remote Control Car Club	To be advised	To be advised
Short Mat Bowls	Ros Chandler	07367 447434
St Radigunds Church	Rev Brian Williams	01303 243784
St Radigunds Church Bookings and Events	Audrey Goaten	<a href="mailto:tryke@audrey47.plus.com">tryke@audrey47.plus.com</a>
St Radigunds Choir	Jerry Spillett	07961 994097
Tai Chi	Anna	01304 205405
Twinning Association	Jerry Spillett	07961 994097
Ukraine "Homes and Help"	Janet Milliken	01303 257003
Welcome to Village Letter	Jackie Watson	01303 258865
WI	Pam Barr (President) Caroline Bunting	01303 489006 07885 406433
Youth Club	Simon Withey	07860803767

**Recycling  
and Food Waste**  
**Thursdays,**  
**5<sup>th</sup> and 19<sup>th</sup> February**

**Rubbish  
and Food Waste**  
**Thursdays,**  
**12<sup>th</sup> and 26<sup>th</sup> February**

**Garden Waste**  
**Fridays,**  
**6<sup>th</sup> and 20<sup>th</sup> February**



### **Shepway Writers Group**

Are you interested in creative writing?

Now's your chance to put pen to paper and write short stories, poetry, or even that book you have been meaning to write.

Our informal group meets every month in Folkestone. It is free to join, so why not come along and give it a go?

Contact Graham on 01303 470229 or 07722 560702.

**CAPEL-LE-FERNE  
WILDLIFE FACEBOOK  
PAGE - SEARCH  
Capel-Le-Ferne Wildlife  
AND JOIN OTHER  
RESIDENTS DISCUSSING  
ALL THE WILDLIFE  
IN OUR VILLAGE**

### **SIGHTLOSS GROUP:**

The Folkestone Macular Society Support Group meets on the last Friday each month from 10:30am to noon at

Best Western Clifton Hotel  
1 - 6 Clifton Gardens  
The Leas, Folkestone  
CT20 2EB

All welcome. Meeting other people with macular disease helps you understand your condition, share information about treatments, and stay independent.

For more information call Margaret on 01303 226 877 or email: [help@macularsociety.org](mailto:help@macularsociety.org)

**KNIT and NATTER,  
REECE ADAMS HOUSE,  
CAULDHAM CLOSE  
EVERY MONDAY,**



**2pm - 4pm.  
Everyone Welcome!**

**For more  
information contact  
Jan on 01303 256637.**





### All Computer Problems Solved

Ring: 07968 129902 - Usual Fee **£55**

\*Computers, laptops, tablets, smartphones, TVs set up, PCs upgraded & repaired.  
\*Refurbished computers available.  
\*PC setup includes, Email, Anti-virus, Office Software, Data copying, printers etc.

\*Data recovery \*Internet connections & Cloud problems  
\*Web sites built & hosted with email - Est. £12 per month.  
\*Tuition available by a qualified tutor

Ring Tony for a fast and friendly service

See [www.computers-in-kent.co.uk](http://www.computers-in-kent.co.uk) for details

*Jessica Young*

### MAAT, Accountancy, Book-keeping, Payroll and VAT services

For small businesses and sole traders  
Free initial consultation. Flexible hours



Contact details:  
Mob: 07704 518251.



Email: [contactyoungstoday@gmail.com](mailto:contactyoungstoday@gmail.com)

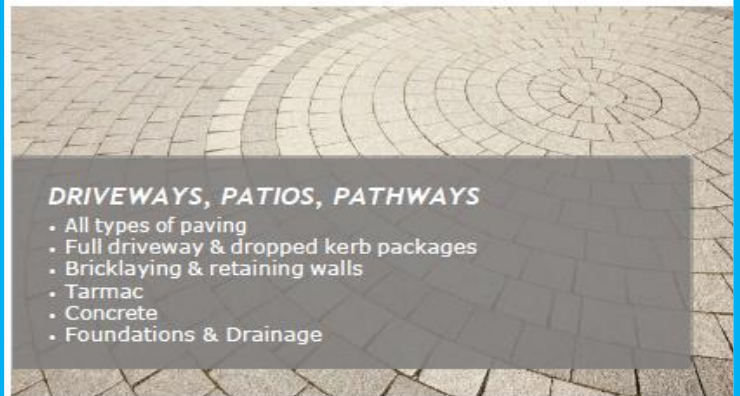
### CAPEL VEHICLE SERVICES

All makes of cars serviced and repaired.  
MOT's and repairs, mechanical and welding.  
Tyres, Exhausts, Batteries Supplied and Fitted  
Competitive rates. No VAT.

*Friendly efficient service*

**Call John Horne 01303 255894**

Local free collection and delivery available if required



#### DRIVEWAYS, PATIOS, PATHWAYS

- All types of paving
- Full driveway & dropped kerb packages
- Bricklaying & retaining walls
- Tarmac
- Concrete
- Foundations & Drainage

CONTACT US FOR A FREE ESTIMATE

T: 01303 253437

E: [info@capelgroundworks.co.uk](mailto:info@capelgroundworks.co.uk)  
[www.capelgroundworks.co.uk](http://www.capelgroundworks.co.uk)



**ELECTRICAL SERVICES LTD**

**Colin Newton**

[www.brightideaelectrical.com](http://www.brightideaelectrical.com)  
[enquiries@brightideaelectrical.com](mailto:enquiries@brightideaelectrical.com)



**T 01303 778366**

**M 07855 431330**



### FITTING CREATIONS

**BLINDS – CURTAINS – SHUTTERS**



Friendly Family Business  
Local to you

01303 894882 07506 144427

[www.fittingcreations.com](http://www.fittingcreations.com)

[info@fittingcreations.com](mailto:info@fittingcreations.com)

### Jonathan Brooker Folkestone Decorator



Exterior and interior painting and decorating.  
Property maintenance & comprehensive handyman. All jobs considered

Email: [decoratorfolkestone@gmail.com](mailto:decoratorfolkestone@gmail.com)

Tel: No: 07541 314142



MOT Testing  
Station

#### MOT's

- Cars
- Bikes
- Vans
- Quads

### Capel Garage

30 Old Dover Road,  
Capel-Le-Ferne

Tel: 01303 254282



#### SERVICING

- Repairs
- Exhausts
- Tyres
- Batteries

#### NO JANUARY ISSUE

Items for March 2026 issue to be with  
Maureen Leppard (Editor) at 39 Victoria Road, Capel-le-Ferne CT18 7LT,  
(Tel: 01303 259564) or Email: [clerk@capellefernepc.org.uk](mailto:clerk@capellefernepc.org.uk)

by 6pm, Sunday, 15<sup>th</sup> February 2026

**PLEASE NOTE IT IS EDITOR'S DECISION ON FINAL CONTENT**