



GRAPEVINE

Capel-le-Ferne Village Newsletter

DECEMBER 2024 - ISSUE NO: 343



NO JANUARY ISSUE.

IT IS EDITOR'S DECISION ON FINAL CONTENT

WHAT'S ON" IN CAPEL-LE-FERNE

Please check with organisation direct to clarify events and meetings.

If you know details of your event, please let Editor know so organisations avoid booking same date

Dec 3 rd	Santa on his Sleigh in the Village
Dec 6 th	Good Neighbours Free Coffee Morning
Dec 8 th	Switch-on Christmas Tree Lights Event
Dec 15 th	Come to Meet and Greet Santa
Dec 17 th	Gardeners Christmas Party (page 18)
Dec 20 th	Good Neighbours Free Coffee Morning
Apr 12 th	Cancer Research Jumble Sale
Jan 3 rd	Good Neighbours Free Coffee Morning
Jan 17 th	Good Neighbours Free Coffee Morning



CAPEL'S GOOD NEIGHBOURS
FREE COFFEE MORNING
sponsored by Capel Cares



GOOD NEIGHBOURS
FREE COFFEE MORNINGS
DON'T MISS OUT



come and join us on our next coffee mornings,
6th & 20th of December.

Remember to wear your best Christmas jumpers.
3rd & 17th January 2025

Free coffee morning, every month, twice a month!
Usual time of 10.00am.

Village Hall, Lancaster Avenue, Capel-le-Ferne, CT18 7LX



**TUESDAY
3RD
DECEMBER**

*Christmas
2024.*

**Folkestone, Hythe
& District Lions Club are
BRINGING SANTA ON HIS SLEIGH
TO THE VILLAGE,
VISITING A STREET NEAR YOU**

Leaving at 5.30pm from
Village Hall Car Park,
Lancaster Avenue, Capel-le-Ferne,
CT18 7LX
Route detailed and on map.

Route Map available on Page 11

**Come to
Meet and
Greet Santa**

Capel-le-Ferne Village Hall
Lancaster Avenue, CT18 7LX

**A Gift
for everyone**

**Sunday,
15th
December
10am
to 2pm**

Santa's Grotto



**Folkestone, Hythe &
District Lions Club**

**FREE
Mince Pies &
Mulled Wine**

**FREE
Tea, Coffee &
soft drinks**

**Capel-le-Ferne Parish Council and
Village Hall Management Committee
Invite you all to join in our
"Switch-on"
Christmas Tree Lights
Event in Village Hall Car Park
Lancaster Avenue, CT18 7LX**

**Sunday, 8th December
From 4.30pm for
5pm "switch-on"**





CAPEL-LE-FERNE VILLAGE HALL
providing services to the local community

<http://www.capelvillageHall.com>

REGISTERED CHARITY No.281786

Something to celebrate? Want to hold a party?

Need to organise a meeting or training session?

Want to start a teatime chat group or a new sports club?

Licenced for most things (except hypnosis and boxing)

including sale of alcohol, PRS, raffles.

To view the Hall, or make a booking contact
the letting secretary Sue Leaning on 07939 095880

Email preferred: sue.lettingscvh@gmail.com

As I write this, temperatures have dropped, early morning frosts are upon us and the cold winds, so inherent to Capel, have started to creep over the cliff edge. Winter is definitely upon us. And with winter comes preparations for Christmas.

At the Hall we have a plethora of events planned for the Christmas run up. Decorations are going up on the 30 November from 10am. We have about four or five trees to put up inside the Hall plus other decorations. It's quite good fun, so if you want to come down to help...

On the 3 December we have our first Christmas Farmers Market, to be repeated every Tuesday throughout December. You can order your Christmas meat, put in an order for bread and rolls, buy in chutneys, honey and jams, order a selection of cakes, mince pies, not to mention craft items – candles shaped like Christmas trees, personalised wooden signs and plaques, jewellery and all manner of Christmas gifts. The last Farmers Market before Christmas, will be the 17 December, and we reconvene on the 7 January.

On the 8 December in collaboration with Capel-le-Ferne Parish Council, we are introducing a new event that of the official Christmas tree switch on. A 15-foot tree will be erected just outside the Hall. There will be the countdown, followed by carols round the tree led (we hope) by local choirs. Mulled wine and mince pies will be waiting for us in the Hall with soft drinks and tea and coffee on hand all complementary.



This month we will be electing new officers at our monthly meeting, following the AGM on the 25 November. We can also co-opt up to 3 people during the year, so if anyone is interested in becoming a trustee, please contact Sally on eures1994@yahoo.com at any time for further information on what's involved.

This past month we have also been carrying out a number of housekeeping tasks, ensuring that we know exactly what is happening in the Hall and who is doing what. We have keys for everything in the Hall and these are issued to people who are either regular Hall users, or who have made bookings. We do ask that these are not copied, but we are aware that this goes on. It is now clear, that when people finish using the Hall, they have been passing on their storage capacity (with keys) to others using the building. We now have an up-to-date list of who has what and would ask, that if changes are made, then the Halls trustees are contacted first.

Finally on behalf of all village Hall management committee and all its helpers, I would like to wish you all a Merry Christmas and a peaceful and joyous New Year.

Village Hall 100+ Club Winners for NOVEMBER

1st – Lesley Harris

2nd – Maureen Leppard

3rd – Marilyn Flack



Congratulations



It could be your name here!

You still have time to join the

Oct 24 - Sep 25 season - Details on Page 11

For more details see notice board in

the village Hall or email

secretary.cvhmc@gmail.com



FARMERS' MARKET

CAPEL-LE-FERNE VILLAGE HALL,
LANCASTER AVENUE, CT18 7LX.
EVERY TUESDAY, 10AM - 12NOON



Community event run by and for the community.

Come to the Farmers' Market, check out the stalls and stay for a cup of tea or coffee.

- > Our bakery, supplied by Vanes of Dover - place orders.
- > Rotherwood Butchers.
- > Delicatessen stall on 1st Tuesday of month.
- > Julie selling her much-praised cakes.
- > Cheese, Chutneys and Jams/Honey are available and craft stalls.
- > Parish Council surgery, 1st Tuesday of month.
- > Community computer access point available, free of charge, if need help with on-line activities.
- > Also available, library/jigsaw loans.
- > Postal advice/service.





CHURCH SERVICES, DECEMBER 2024

Date	Alkham	Capel	Hougham
Sunday 1st ADVENT SUNDAY	Evening Prayer 5.00 pm	Sung Eucharist 9.30 am	Eucharist (said) 11.00 am
Sunday 8th 2nd Sunday of Advent	Sung Eucharist 9.30 am	Worshipping Together 11.00 am	Pick-your-own Carols 11.00 am – <i>Come and choose the carols that <u>you</u> want to sing!</i>
Saturday 14th <i>Activities and stories at Messy Church, followed by tea.</i>		 3.00 – 5.00 pm	
Sunday 15th 3rd Sunday of Advent	Worshipping Together 11.00 am	Eucharist (said) 9.30 am	Sung Eucharist 11.00 am
Friday 20th	Capel's Carols by Candlelight 7.00 p.m. <i>Followed by mince pies and mulled wine</i>		
Sunday 22nd 4th Sunday of Advent	Nine Lessons and Carols 6.30 p.m.		Sung Eucharist 10.00 am
Tuesday 24th CHRISTMAS EVE	Crib service 4.30 pm; Christmas Eve Eucharist 9.00 pm	Crib service 3.00 pm; Christmas Eve Eucharist 10.30 pm	
CHRISTMAS DAY			Christmas Day Eucharist 9.30 am
Sunday 29th 1st Sunday of Christmas		United Parish Eucharist 10.00 am	
Visit us online at: www.church-alkham-capel-hougham.org.uk and on Facebook: https://www.facebook.com/BeneficeofACH			

From the vicarage

It's the time of year when Christmas cards from friends and family you haven't seen all year start to arrive - something that means, 'We're still around - and thinking of you...'

Perhaps for some going to Midnight Mass is a bit like that - we might not be at church often, but something's missing from Christmas without it. Before I was ever a priest, I was an altar server. Across the road from the church was a pub, with another within easy staggering distance. By 11.00pm on Christmas Eve the church would be full. The choir led carol singing until 11.30pm, when Midnight Mass began.

Some would leave as the carol singing finished, but one year people were still standing in the aisles as Midnight Mass began. Problem: would there be enough bread and wine for everyone who wanted Communion? The Vicar's solution: take one large antique jug full of wine, and consecrate the lot. The problem then was that anything left over at the end had to be consumed. I was roped in to help, which left me over the drink-drive limit, and needing a lift home!

We had a different problem last year. No doubt the bells rang as Merrily on High as ever, but here below an outbreak of Covid kept people at home; consequently, there were plenty of vacant pews at Midnight Mass.

Our solution? Inspired by the example of some other parishes, we are going to try something different this year. The ever-popular Crib Services will happen as usual, but 'Midnight Mass' at Alkham will start at 9.00pm, probably ending just after 10.00 pm (in time for Last Orders!) with 'Midnight Mass' at Capel following at 10.30pm (so home by midnight!)

Why not come and make it part of your Christmas...? ... Brian

PLEASE NOTE ... ST RADIGUND'S CHURCH IS AVAILABLE FOR LETTING PURPOSES

• Rates £10 per hour

(Negotiable for block bookings, local residents).

• PA/Sound system available • WiFi available.

• Booking Policy available from

Audrey Goaten, 32 Albany Road,

Capel-le-Ferne. CT18 7LA.

Email: tryke@audrey47.plus.com

A number of people who live in the village are involved with the Dover Foodbank, and St Radigund's Church has been one of their donation points for many years now - which, it seems, is not as widely known as it ought to be! The Dover Foodbank is associated with the Trussell Trust, and information about how it functions and how people can give and get help can be found on their

website: <https://dover.foodbank.org.uk/>

At church we collect items in our Green Box. When ready, we contact Moira who lives in Old Dover Road, who then arranges for them to be taken to the warehouse.

Our November WI meeting began with a minute's silence to remember Joan, one of our members who had died recently. Joan had been a member for many years, and although unable to attend meetings recently, she will be missed.

Our condolences to her family and friends.

We welcomed a visitor (a potential new member) Sue to the meeting. New members are always welcome, the first 3 months are free!

The evening was a Food and Wine/soft drinks tasting event. There were 5 different mince pies to taste – the mince pies were cut in half so we were not expected to eat 5 mince pies! The mince pies were judged according to their taste, the pastry and the filling. We were asked to decide the brand and the price. Similarly, there were three wines and 3 soft drinks to taste, again rating them according to their taste and trying rank them in order of expensive, middle price and least expensive.

The merits of the mince pies and the drinks were discussed, and the results were greeted with a mixture of "I knew that would be the most expensive/cheapest" to "Fancy that being xyz brand". The competition was "an old-fashioned hangover cure"; the winner being an entry which involved whisking up a raw egg and then drinking it!

After the refreshment break – yes despite the drink we still had tea and coffee, but gave the usual biscuits a miss! - we had a quiz based on food and drink. Some questions were really stretching!

A spare bottle of wine and a bottle of elderflower were part of the raffle, which was drawn before we cleared away the tables and chairs and wished each other good night.



CAPEL-LE-FERNE GARDENERS' ASSOCIATION



The society is always pleased to welcome new members, we are a friendly group and if you join now, you will be a member of the group right through to the AGM in November 2025.

Membership is only £10 and our events include monthly presentations, 3 open shows at the Village Hall, and an outing to an impressive garden and perhaps stately home, plus, a quarterly newsletter.

Interesting speakers, a friendly quiz, and occasional visits to stately homes and their gardens.

Our enthusiastic members are always happy to share the benefit of their knowledge and experience with aspiring new growers.

If you are not yet a member and would like to be, membership is just a low £10.00 per year.

The society holds a Rose show in June, Spring, Summer and Autumn Shows, at the Village Hall.

See "What's On" front page for dates.

The group meets on the third Tuesday of each month at 7:00pm in St Radigund's Church, Albany Road, for informative presentations, social events and quiz evenings.

Look forward to seeing you at the shows, or any of our events.

Please contact the following for further details.

Brian Castle - 01303 259105 or 07598371984. Jean Tanton - 01303 255982.

Bob Parsons on 07484 275551.

Facebook Page: <https://www.facebook.com/groups/1104487473444755>

COMMUNITY SUPPORT



NEIGHBOURS HELPING NEIGHBOURS

A local organisation that aims to support people living in Capel

Staying independent and being part of the community is important to everyone but there are times during our lives when we could benefit from a little help from our neighbours. **CAPELCARES** is a local volunteer organisation run by residents of Capel to support those living in Capel. We can arrange to meet you in your own home to discuss any issues or challenges that you may have. Our volunteers are all local residents who have been DBS checked and have been trained in Safeguarding.

Our volunteers can help you with a variety of issues, including:

- Social visits for those living on their own.
- Home visits to support family carers.
- Assistance with shopping.
- Transport support, i.e. to & from medical appointments etc.
- Small house maintenance/gardening jobs.
- Regular phone contact.
- Helping you make contact with other services.



Referrals can be made by anyone for anyone. Our aim is to help residents in Capel remain safe, secure and independent in their own homes, as well as providing support to residents with unexpected, short term challenges that disrupt routine family life.

NEIGHBOURS HELPING NEIGHBOURS

To find out more or to arrange a visit please contact Jan on 01303 257003

Capel Cares GOOD NEIGHBOUR coffee mornings are now held every first and third Friday of the month.

To include free tea, coffee or hot chocolate with assorted biscuits.

A regular raffle is held and drawn on the day, with a range of amazing prizes to win.

EVERYONE WELCOME

Do you have short term or temporary mobility challenges?
Maybe from an accident, recent surgery,
or just aches and pains?



CC GOOD NEIGHBOURS
has a range of mobility aids
that could assist you.

To include:

- A light weight wheel chair
- A banana board to assist getting from wheelchair to car seat.
- Mobility walker with an integral seat.
- Light weight, 3 wheels, walking frame.
- Aluminium walking sticks with adjustable height.
- Swivel seat pad for use in a car.

These are all available for use, free of charge, on a temporary loan basis.

If any of these aids would be a benefit for you or someone in your family, please contact

Jan Milliken on 257003, or Neil Perrin on 243645.

Volunteer with us

and make a difference to
someone's life



Could you spare a few hours a month to help your neighbour? We are looking for community minded people to join CAPELCARES as we seek to assist those in Capel le Ferne who just need a little help to lead independent lives in their own homes.

Call Jan on **01303 257003** for more details



🏆 CAPEL CARES, RECORD BREAKERS!!! 🏆

On the 18th October we had a record 56
attendees at our coffee morning!

🏆 Congratulations to all who attended. 🏆

In October we celebrated **JACK'S** very special birthday, and shared birthday wishes with Jane.

In November we shared birthdays with
MAGGI, JANET, MICK, SHIRLEY (1) & SHIRLEY (2), SHEILA, JILL and PAM.



It was also great to welcome new guests.

TED & GILL

DON'T MISS OUT

come and join us on our next coffee mornings, on the
**6th & 20th of December, and
3rd & 17th January 2025**

Remember to wear your best Christmas jumpers.

SPECIAL EVENT

We have planned our traditional Christmas lunch events for the 6th & 20th of December immediately after the coffee mornings, at the Royal Oak.

Free coffee morning, every month, twice a month!

The next **6 GOOD NEIGHBOURS FREE COFFEE MORNINGS** will be held on 6th & 20th December,

3rd & 17th January and 7th & 21st February

Usual time of 10.00am.

Need transport? Contact Jan on 257003.

**LOOKING FORWARD TO SEEING YOU ON
THE 6th & 20th December**

We'll be there, will you?

EXTRA DATES FOR YOUR 2025 DIARIES

3rd & 17th January and 7th & 21st February



Celebrated birthdays with Maggie, Mike, Shirley and Janet

Happy Birthday!

Happy Birthday!



Celebrated birthdays with Jill, Shirley and Pam



Happy Birthday!

Happy Birthday!



Stagecoach

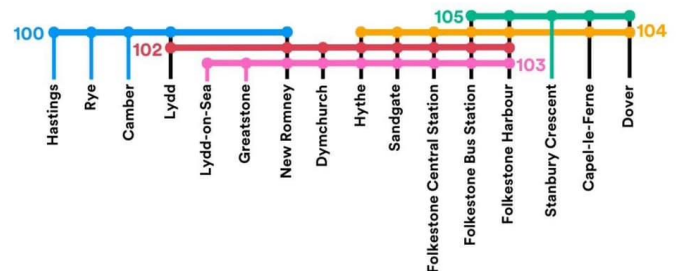
CHANGES to Bus Services in Capel-le-Ferne

Capel street is a timing point (it appears on duty board as a guide to time depart)
all other stops remain open

Coastal Services - Dover, Folkestone, Hythe, and Romney Marsh

The 102 service will become four routes; 102, 103, 104 and 105. Each of these routes, together with the existing route 100, will cover a section of the coast. This new arrangement is carefully designed to make sure we're offering journey options to suit you.

There are new connections – such as between Hythe, Sandgate, Folkestone Central Rail Station and Folkestone Harbour - and where routes overlap, they provide a higher frequency service where demand is greatest.



Buses between Folkestone and Dover **every 15 minutes**.

4 buses an hour between Hythe and Folkestone (including Folkestone Central Railway Station and Folkestone Harbour)

2 buses an hour between New Romney, Dymchurch, and Folkestone (including Folkestone Central Railway Station and Folkestone Harbour)

The services we operate between Folkestone and Romney Marsh (102 and 103) will be moved to run from our local operations base at Old Romney. We expect this to further improve their performance and reliability.

**Combined Notice
from St Radigund's and
the Baptist Church.**

ADVENT CHURCH SERVICES

Advent Sunday - 1st December

09.30am ... St Radigund's Sung Holy Communion

10.30am ... Baptist Church Communion

2nd Sunday in Advent - 8th December

10.30am ... Baptist Church

11.00am ... St Radigund's worshipping together

3rd Sunday in Advent - 15th December

09.30am ... St Radigund's Holy Communion

10.30am ... Baptist Church

4th Sunday in Advent - 22nd December

10.30am ... Baptist Church

Christmas Eve - 24th December

3.00pm ... St Radigund's Crib Service

10.30pm ... Midnight Mass

Christmas Day

10.30am ... Baptist Church

CAPEL BAPTIST CHURCH

Preachers for December

1 st , 8 th	Pam Barr
15 th	Blackwell
22 nd	Pam Barr
Christmas Day	Pam Barr
29 th	Jim Taylor

**Messy Vintage Thursdays,
at 2.30pm**

all welcome, worship, craft and tea.

All Welcome

*For details of Preachers or if there are queries regarding these details, please call 01303 489006 - Pam Barr
Please! A reminder that the public are requested not to park in front of the gates on Sunday mornings as*



Self Storage 20ft x 8ft



**New containers,
Secure yard
Easy In/Out Terms**

£120 per calendar month

TEL: 07850 834782



Dave Parker Services
Capel-le-Ferne

GRAPEVINE ADVERTISING

from 1st April 2024

**This space could be advertising your commercial/
business venture or, non-village organisation event.**

Size 9cm x 3.5cm £15.00

Size 9cm x 7cm £22.00

Size 9cm x 13cm £30.00.

Size 20cm x 13cm - £40.00 (½ page)

For further details contact

Parish Clerk at 39 Victoria Road,

or Tel: 01303 259564.

Email: clerkcapellefernepc@btinternet.com

Pro Services – Paul Relf Optimum Services

4 Queen's Lea, West Hougham, CT15 7BJ.

Tel: 01304 214166. Mobile: 07787 910961

paulrelf@hotmail.co.uk

No job too small

Property maintenance, handyman,

Serving Capel residence since 2012

PLEASE ENQUIRE FOR ANY JOBS NOT LISTED



Battle of Britain Memorial - Remembering the Few

The support that we have received from you all is something that we will always be so grateful for. It is your support and donations that help us continue our work to remember 'the Few' in these difficult times.

If you wish to make a donation to the Memorial Trust, please click here for more details: <http://ow.ly/EkKh50DboEb>

It's free entry to the Memorial and The Wing.

The Scramble Experience inside is our only paid-for attraction, and there is a nominal parking charge.

We always welcome donations to keep this wonderful place running, though.



Grab a bite to eat at the Cockpit Café while visiting the Battle of Britain Memorial ✈️

From cream teas to paninis and toasties, we've got everything you need for a perfect pit stop. You'll also enjoy breathtaking views across the Channel to France.

See menus here 📄 : <https://tinyurl.com/34ynhc3k>

The Wing, car park, and Cockpit Café will be open Tuesday to Sunday, from 10am to 4pm. Please note that we will be closed on Mondays 🕒

Treat a loved one this Christmas to something from our incredible range of Battle of Britain-inspired gifts via our online shop. Whether they love to learn more about the Battle of Britain, collect memorabilia or adore a trinket, we have items suitable for stocking fillers or a special gift.

Shop books, experiences, things and memberships today:

<https://www.battleofbritainmemorial.org/all-products>



Visit our online shop:

<https://www.battleofbritainmemorial.org/all-products>

Visit our physical shop Tue-Sun, between 10am to 4pm.



Home to the National Memorial to the Few and The Scramble
New Dover Road (B2011), Capel-le-Ferne,
CT18 7JJ. Tel: No: 01303 249292

<https://www.battleofbritainmemorial.org/>

Facebook Page: <https://www.facebook.com/rememberthefew>

Join us as we honour the courageous Few who defended our skies during the Battle of Britain. Our major appeal is dedicated to enhancing our clifftop site for the next generation. But we can't achieve this without YOUR invaluable support

Our goal is to raise £1m to extend Hunting Lodge and create an extraordinary, state-of-the-art aerial dog fight simulator experience.

Imagine yourself in the cockpit of a Supermarine Spitfire or a Messerschmitt Bf109, engaging in thrilling battles that replicate the challenges our courageous aircrew faced in 1940.

This extension will not only provide exhilarating simulators but also additional space to display more Battle of Britain artefacts.

As a charity that relies on the generosity of our supporters, with no government support,

we can only achieve this dream with you by our side.

Every donation, no matter the size, gets us closer to our ambitious £1m goal. With your contribution, the Memorial will continue to inspire and educate future generations.

Don't miss the opportunity to be a part of history. Donate here :

<https://battle-of-britain-memorial-trust.raisely.com/>



EVERY 1ST SUNDAY OF EACH MONTH

CLASSIC CAR MEETINGS - NEXT MEETING 1ST DECEMBER

Come and join in and look at cars. Location - Left hand Side of Car Park



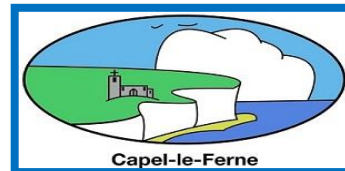
Home to the Battle of Britain Memorial - Remembering the Few and The Scramble,
New Dover Road (B2011), Capel-le-Ferne, CT18 7JJ.
Tel: No: 01303 249292





CAPEL-LE-FERNE PARISH COUNCIL

Summary of some items discussed at meeting held Tuesday, 19th November 2024



Requests from public and Other Feedback:

- Flooding Capel Street/Lancaster Avenue: Drainage issues, with investigations ongoing.
- Inconsiderate parking on verges/pavements/drop-kerbs. Dangerous for pedestrians, mobility scooter, pram, buggy users and costs involved reinstating the grass. *See page 12*
- Highway obstruction Capel Street with building material.
- Faded white markings in Old Dover Road.

Planning:

- All planning application documents and comments
See page 11, and also available to view on Dover District Council website: <https://www.dover.gov.uk/Home.aspx>
Planning>Applications>View-Applications>Planning>Simple Search>Decisions
- Hard copy of DDC Local Plan received for reference.

Neighbourhood Watch (NHW):

- Community Warden reported no new issues.
- Liaising with PCSO on Caravan on Old Dover Road, abandoned vehicle on New Dover Road, Bricks on Capel Street.
- *Page 13 for latest scams.*

CCTV – Nothing to report.

Playing Field and Equipment:

- 6 further upright posts to Rebound Fencing, to try and lessen the noise, being installed within days.
- Tree heights on boundaries – professional tree survey received and quotations to be sourced.
- Condition of wet-pour surface - waiting meeting with professional contractor.

Traffic Management and Highways:

- Cllr. K Pilcher attending online meeting with National Highway Officer and other parties, regarding lack of signage on M20/A20 for traffic diversions and vehicles using B2011.
- Reinstatement of speed activated signs on B2011, waiting Kent Highways Design Team on costings.
- Lack of tactile surface to Beatrice Road drop kerbs, queried, on work that has been suggested, to be discussed further with Highway Manager.

Public Rights of Way:

Late cuts have taken place. Signs by Church (Albany Road/Old Dover Road) and the finger post Green Lane – reported and waiting KCC attention.

Speed Watch: Report received and noted.

- 2 Sessions held since last meeting on New Dover Road.
- Out of 430 vehicles passing, 18 offences recorded.
- See page 12 for details.
- All speeding vehicles reported to Kent Police.
- Session results available on Parish Council Website. <https://capellefernepc.org.uk> *More details on Page 12.*

PARISH COUNCIL SURGERY

Is there an issue you wish to discuss with your Parish Council? A Councillor and Parish Clerk will be available on 1st Tuesday, of each month, From 10am-12:00noon, at Farmers' Market, Village Hall, Room adjacent to Entrance.

NEXT SESSION TUESDAY, 3rd DECEMBER

Events:

- Christmas Tree – working party of Councillors to erect on Saturday, 7th December from 9.30am.
- Switching on Christmas Tree Lights – Clerk to check with VHMC on choir and music.
- Remembrance Day event went well in glorious Autumn sunshine, other than one driver accessing the road through members of public attending.

Village Hall (VHMC): - Enquiries to be made with Committee members on celebrating 80th Anniversary of VE Day in 2025.

Capel Cares: - 56 members of community attended the last Coffee Morning. 2 Sessions booked for Christmas Dinner at Royal Oak. *Further details on pages 6 and 7.*

Grapevine Newsletter/social media: - Request received to divide the email attachments send out, into separate ones for events, messages and NHW.

Training/workshops/seminars:

- Cllr. S Pilcher attended an online session for Planning, reporting it was very information and interesting, which included Neighbourhood Plans. Reasons were relayed why we do not have one; time involved, relevance and lack of community input. So, not for the lack of trying.

District and County Councillor reports:

Other than communications received on planning application for 90 houses, no further reports received.

Matters Concerning the Parish:

- Councillors “Wish-List” for next financial year – updated.
- Village white Gates and Planters – quote received and to be addressed further when weather improves.
- Land Gifted to Parish Council – Agreed to employ the services of a Solicitor (under local government powers s139, s1976 and s111), to legally secure Land gifted in a Will to the Parish Council. This under the provisions of the “Open Spaces Act 1906”, for use solely as community facilities, recreational spaces, or public amenities.
- Award from Kent Associations of Local Councils (KALC) Consideration to be given on nominations for 2025.
- Changes to Stagecoach bus services – item to be referred to in newsletter. *See page 7.*
- Councillors’ comments: – Thanks, expressed to organiser of Scarecrow Festival, Benches available for Council use and 3-year Business Plan received.

NO MEETING IN DECEMBER

NEXT COUNCIL MEETING WILL BE

TUESDAY, 21st JANUARY 2025, 7.30PM.

**MINUTES/DECISIONS/AGENDAS ARE AVAILABLE ON
THE COUNCIL WEBSITE:**

<https://www.capellefernepc.org.uk/>

**PARISH COUNCIL MEETINGS ARE OPEN TO PUBLIC.
IF YOU WISH TO ATTEND AND ADDRESS THE
COUNCILLORS, PLEASE INFORM CLERK**

***GIVING 48 HOURS NOTIFICATION
AND THE SUBJECT OF YOUR ADDRESS***

Further information on any of the above or to contact Parish Council, please write to Parish Clerk,
39 Victoria Road, Capel-le-Ferne, or Tel: 01303 259564.

Email: clerkcapellefernepc@btinternet.com

!!!! UPDATE !!!!

Outline Planning Application was **GRANTED**
by Dover District Council Planning Committee at
Meeting on 21.11.2024

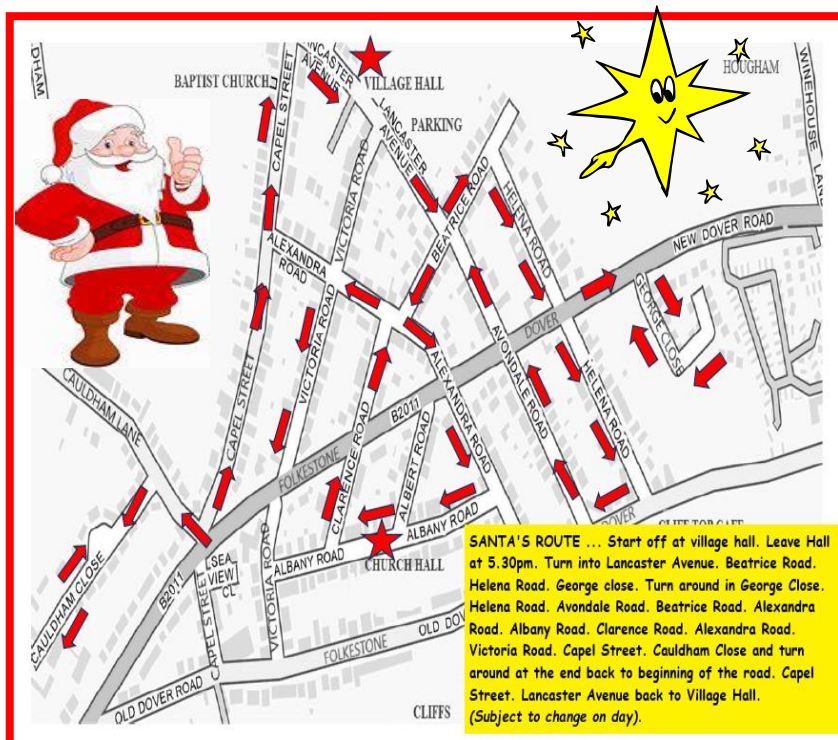
Land South East of Great Cauldham Farm, Cauldham Lane,
Capel-le-Ferne, CT18 7HQ.

RE: APPLICATION 24/00257

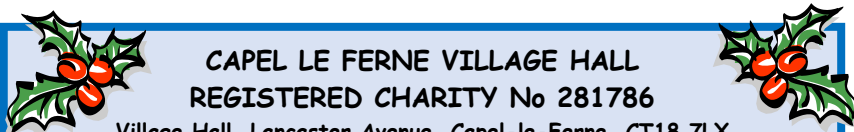
the erection of up to 90 dwellings with associated parking and
infrastructure following demolition of existing dwelling;
with all matters reserved except access.

To read Parish Council speech to Planning Committee visit our
website, under Planning

<https://www.cappellefernepc.org.uk>



INFORMATION ... from members of community ... PLEASE TAKE CARE
Be careful on the cliff path between Winehouse Lane and the Clifftop Cafe. A number of these signs have appeared along that stretch. A new footpath has been created (between Winehouse Lane and the Lighthouse), complete with new signage, to encourage people not to walk along the cliff edge path there.



CAPEL LE FERNE VILLAGE HALL REGISTERED CHARITY No 281786

Village Hall, Lancaster Avenue, Capel-le-Ferne, CT18 7LX

100+ Club Subscription - Oct 24 to Sep 25

For the outlay of just **£12 per number** for the whole year,
you will be entered into a monthly draw for three cash
prizes, £25 / £15 / £5.

To take out a subscription - Collect a form from the Village
Hall or email the Secretary as below.

Drop it in, with cash or cheque or date of BACs to Kath Hounsell,
134 New Dover Road, OR

Hand it with cash or cheque or date of BACs to
Sally Cook or Cherry Leppard at Farmers Market on a Tuesday.

BACS can be paid to: Capel-Le-Ferne Village Hall Mgmt
Committee 281786

SORT CODE: 40 19 23 A/C NO: 71495828, and use
'100YourSurnameInitial' as the Reference please. Cheques should
be made payable to 'Capel le Ferne Village Hall'.

Secretary.cvhmc@gmail.com



Volunteers wanted

Would you like to help protect our residents from speeding vehicles?
Could you spare 1 – 2 hours a week?

If so, we would love you to join our enthusiastic Speed Watch Team.

Community Speed Watch is an educational scheme to help reduce speeding traffic through our village. The scheme enables volunteers to work within our village to raise awareness of the dangers of speeding and to help control the problem locally.

If you are interested and would like to talk to someone about becoming a team member, contact the Parish Clerk on 01303 259564, Email: clerkcapellefernepc@btinternet.com



DAILY ACTIVITY



Can you help your community and spare a few hours to reduce speeding vehicles in your area?

Capel-le-Ferne Speed-watch Group

2 Sessions carried out since last Newsletter (due to weather).

430 Vehicles counted during the sessions on New Dover Road (B2011), a 40mph limit zone, which involved 18 offenders (4.19%). Amongst offenders, with excessive speeds recorded included, Grey Renault, Silver Mazda, Red Nissan, Blue Ford and Blue BMW all travelling at 50mph.

Details of all vehicles have been passed to Kent Police for action.

Update on their actions can be found on Parish Council website.

RECRUITMENT INSTRUCTIONS CAN BE FOUND ON PARISH COUNCIL WEBSITE

[Capel-le-Ferne Parish Council \(capellefernepc.org.uk\)](http://capellefernepc.org.uk)

PLEASE could the Parish Council politely mobility request, to be considerate to your fellow members in our Village, by not parking on verges/pavements/drop-kerbs. As you can see from this photo today, this type of parking is extremely dangerous for pedestrians, scooter, pram and buggy users to either pass-by or cross the road. Especially in weather conditions we had today and early dark evenings, as visibility of any on-coming traffic, is blocked. Also, if parking on grass verges, the cost involved in reinstating the grass. The drop kerbs, with tactile paving, have now been completed in many locations in Village. These were originally requested and for use by, those members of our community that use mobility scooters/wheelchairs/prams and pushchairs. This makes it easier for these users to gain easy and safe access, especially in Lancaster Avenue, to three (3) main venues in our Village; the Playing Field, Village Hall and Primary School. Please do not park across locations where drop kerbs have been provided. As discussed at our recent meeting, we appreciate that parking at busy times is extremely reduced and, if you have contractors working at your property. We would all value and welcome your help, by requesting your contractor, or yourself, to; park in a selfless way, limiting your stay, and/or parking further along the road, if at all possible. For information: • The Highway Code 243 states “DO NOT stop or park: where the kerb has been lowered to help wheelchair users and powered mobility vehicles, etc.

We really appreciate your help and thank you for reading this and mainly, your assistance to make this a safe and secure Village.

CAPEL-LE-FERNE YOUTH CLUB

We meet every 1st and 3rd Thursday,
7.30-9.30pm

Capel Village Hall, during term time,
Village Hall, Lancaster Avenue
Tel: 07860 803767.

Email: capelyouthclub@outlook.com

Facebook: <https://www.facebook.com/capelyouthclub>





REPORT SUSPICIOUS ACTIVITY Call 999 if:

- * a serious offence is in progress or has just been committed.
- * someone is in immediate danger or harm.
- * property is in danger of being damaged.
- * a serious disruption to the public is likely.

Call 101 for non-emergency enquiries.

Or online <https://www.kent.police.uk/contact/af/contact-us/>



KEEP KENT SAFE LATEST ALERTS



For advice and to report issues to KCC Trading Standards contact:

Citizens Advice consumer helpline on 0808 223 1133

Consumer Advice scams action line on 0808 250 5050

Monday to Friday from 9am to 5pm.

Action Fraud
National Fraud & Cyber Crime Reporting Centre
0300 123 2040

REPORT TO CRIMESTOPPERS

<https://crimestoppers-uk.org> 0800 555 111

[Trading Standards Checked \(kent.gov.uk\)](https://kent.gov.uk)

REPORT TO CITIZEN'S ADVICE HELPLINE 0808 223 1133

<https://www.citizensadvice.org.uk/>

Shoppers warned over luxury advent calendar scams

There are fake adverts going around on social media for luxury advent calendars being sold at extremely low prices.

These are scams by criminals who are likely to sell you counterfeit products or you will receive no item at all. How to avoid getting scammed online Be wary of products for sale at too good to be true prices. Beware fake websites, which look like a genuine retailer's website. Check that the URL is that of the official brand. Watch out for posts from a newly created social media account, or links to a recently created website. You can use a domain checker like who.is, external to check when a website was created.

Read reviews and only buy from authorised sellers and websites.

For advice and to report contact
Citizens Advice on 0808 223 1133.



Kent residents scammed on eBay

Kent resident had the phone they were selling stolen from them. The buyer asked for proof of posting before they would make the payment. They never made the payment. eBay confirmed they had been scammed. → Advice from eBay on shopping safely. ☎ For advice and to report

Citizens Advice consumer helpline on 0808 223 1133.

Kent resident targeted by criminals impersonating Amazon Fraud Team

Kent resident had a call from criminals impersonating the Amazon Fraud Team. They told the resident they needed to open a new account including bank details. Thankfully their bank picked up on the fraudulent activity and blocked it.

📞 We are all vulnerable to scams, be wary and think twice. NEVER give out your personal or financial information.

☎ To get advice on scams or to report please contact
Citizens Advice on 0808 223 1133.

Kent resident targeted by Winter Cold Welfare scam

Residents are being sent text messages from criminals impersonating the government telling them to register to get winter heating subsidies.

📞 This is a scam. If you think you're eligible for winter fuel payments visit the Government website: <https://loom.ly/2CpnCic>
If you need help paying heating bills visit Citizens Advice Grants and benefits to help you pay your energy bills
<https://loom.ly/iBt-9II>

📞 We are all vulnerable to scams, be wary and think twice. NEVER give out your personal or financial information.

☎ To get advice on scams or to report please contact Citizens Advice on 0808 223 1133.

📞 Folkestone resident was given a leaflet offering guttering work for £39, a man called later demanding £150 for the work. 📞 Last weekend Kent residents in Gillingham and Ashford have been targeted by criminals offering roofing work. Some have paid up to £10,000 in advance only to find no work has been started. 📞 Doorstep criminals (also known as rogue traders, cowboy builders, building and gardening scammers) cold call on unsuspecting households offering convincing deals to try to get you to agree to having work carried out. We know that if you accept work from a doorstep criminal, you'll pay much more than you intended for very poor, unnecessary and sometimes dangerous work.

✗ Never respond to cold callers!

"Puppy smuggling, illegal breeding and organised dog theft are serious crimes."

Alarming data shows that an estimated 2,160 dogs were reported stolen in 2022. If you are thinking of buying a puppy, did you know that if you don't buy directly from a registered breeder or animal rehoming centre, you could be funding organised crime. Criminals don't care about the welfare of animals. So, they don't often vaccinate puppies, which means they are aiding the spread of disease. Your new puppy may get ill or die prematurely. 🐶🐶🐶🐶🐶 Help to stop organised crime and cruelty to animals by contacting the charity Crimestoppers on 0800 555 111 what you know.

REMINDER Neighbourhood Watch ...

BE AWARE and STAY ALERT

Cold calling is the act of making uninvited visits to your home with the intention of selling goods or services.

It is not illegal and does not require a licence.

However, the law states that a trader who ignores a resident's request to leave and not return commits a criminal offence under the provisions of The Consumer Protection from Unfair Trading Regulations 2008

📞 Folkestone resident was given a leaflet offering guttering work for £39, a man called later demanding £150 for the work.



01303 847899

*Live well, your way,
with care in your own home!*

- ✓ Personal Care
- ✓ Companionship Care
- ✓ Home Help
- ✓ Dementia Care
- ✓ End of life Care
- ✓ Live in Care



CARE Professional
with Client and Grandson

Home Instead

Folkestone, Hythe & Ashford
300 Cheriton Road
Folkestone, Kent, CT19 4DP

accounts.folkestone@fha.homeinstead.co.uk
www.homeinstead.co.uk/folkestone

Barton Mobile Foot Clinic

**Professional footcare
in the comfort of your
own home.**

Visits from £30.00



Highly recommended



All routine footcare undertaken; nail cutting (including diabetic clients), with treatment and advice if required on - corns, callus, verrucae, cracked heels, athletes' foot, fungal nails, ingrown and involuted toenails. Dementia friendly.

**To book an appointment:
Mobile - 07944017532**

**Email - bartonfootclinic@outlook.com
Toni Dip FH MCFHP MAFHP**

Stephen Huxtable Garden Services

- Private and commercial garden and grounds maintenance
- Grass cutting, Hedge cutting, Garden clearance, Turfing,
- High quality fencing supplied and erected

Free estimates

01303 891720

www.shgardenservices.co.uk



JACQUI

**SALON and MOBILE
HAIRDRESSING**

Reasonable Prices

CALL 01303 250655 or 07968 967057

For an appointment

**PERMS AND SETS AVAILABLE
IF REQUIRED**



Smart Cleaning

For All Your Cleaning Needs

- Windows
- Carpets
- Gutter clearing/repairing
- Fascias and lastics
- Commercial and Domestic
- Offices
- Jet washing patios/decking

Please call or email to book or for a quote:

Landline: 01303 778257

Mobile: 0777 584 8809

Email:

smartcleaning1313@gmail.com



Daniel Kirby Roofing & Building

www.builders-folkestone.co.uk



Quality material's and reasonable rates
Established 1996

Based in Hawkinge Nr Folkestone Kent
Covering all roofing work from small roof repairs to complete re-roofs.
In Folkestone and Hythe areas

Find us on



What we do

- Fibreglass Grp flat roofs
- Felt Flat roofs
- New Pitched tile and slate roofs and repairs.
- Small and large jobs.
- Fascias soffits and gutters.
- Chimney repairs, rebuilds and removal.
- Conservatory conversions.
- Advice and free quotes

Visit full website below for more details

www.roofers-folkestone.co.uk

01303 892705

07916273886

Saffie, our black cocker spaniel ran off from our garden after being spooked by fireworks on the 3rd November.

A big thank you for all those who looked out for her on Sunday night. Happily, she was found early Monday morning and seems none the worse for her big adventure!

Peter & Chris Gilham.



Thursdays 5-6pm.



AMIN STORES,
NEW DOVER ROAD,
"CASH ONLY"

07955926835

The Window Cleaner

Traditional window cleaning services.

For a free quote call: 07547 808898

One offs / monthly cleans / special occasions

Capel Scarecrow Festival

Total Raised £765.

Funds to be passed to

Capel Primary School for their Opal Play Scheme

Winners

Favourite: ... The Three Amigos

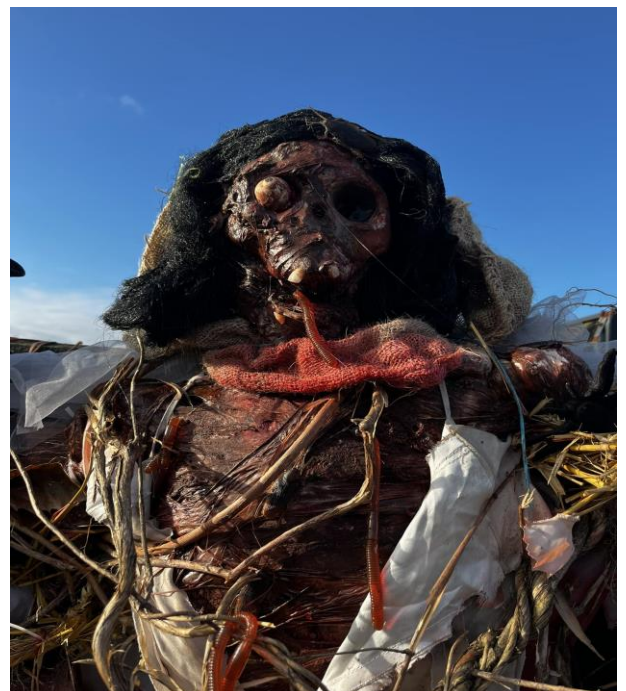
Most Creative: ... Hattie Hedgerow

Funniest: ... Tyranno Straw Us Rex

Scariest: ... The Capel Witch

Winner of Competition: ... Shakira Foster

**Massive thank you to everyone that took part this year,
we had some really creative ideas.**





Capel Short Mat Bowls Club



Contacts

Wendy (Chair-person) Tel: 259210 - Ros Tel: 255862 - Rachel 07853193935

Anyone in the village wishing to try the sport of short mat bowls, please contact above members.

2023/24 CHAMPIONS of the East Kent Winter League, 1st division. 2023/24 CHAMPIONS of the Shepway Winter League.

CAPEL SHORT MAT BOWLS CLUB

Current CHAMPIONS of the East Kent Winter League, 1st division.

Current CHAMPIONS of the Shepway Winter League.

The 2024/25 winter league kicked off this October.

LEAGUE SHEPWAY

The defence of this championship started with a home match win against Lympne. with the triples score being 21-7 for Brian, Elaine & Wendy, and the doubles score 16-15 for George & Rachel. Earning all 6 league points.

Our first away match was a toughie, against Newchurch, with a loss in the triples 22-10 for Brian, Wendy & Neil, and a draw in the doubles for George & Rachel 12-12. We came away with 1 league point.



EAST KENT LEAGUE

The defence of this league championship started on the 31st October with another good result. We won both triple matches 20-4 for George, Rachel & Paul, and 17-5 for Jenny, Elaine & Wendy. Taking all 6 league points.



Our away match at Swalecliffe has been postponed until March 2025.

On the 14th November we entertained Boughton at home with mixed results. Paul, Rachel & Barry winning 14-9. Jenny, Elaine & Wendy losing on the last end on the last bowl 11-12. The combined matches earned 4 league points.

CSMB CLUB COMPETITIONS

On Sunday 17th November we held the first round of the 'MIXED DRAWN SINGLES' knockout competition. With each player having three games across two leagues. Congratulations to Gina & Rachel who came out as the two league leaders. Their final match to determine the overall club champion will be played later.

Best of luck to both players.

WE ARE MORE THAN A BOWLS CLUB

We have our club Christmas dinner booked for the 13th December, at the Folkestone indoor bowls centre.



And we shall have our Christmas fun day on the 22nd December. The wearing of any seasonal attire is highly recommended. And be prepared to play anything (but bowls).

It will be an eat, drink and be merry seasonal celebration.



Wishing everyone a merry Christmas and a prosperous and happy 2025 from CSMBC.





D.E Roofing

Roofing and General Maintenance



Home: 01303 982116



Find us on Checkatrade



Job Advert: Site Manager



at Capel-le-Ferne Primary School

We are looking for a Site Manager to join our village school, due to our current site manager moving to a new role closer to his home.

We are ideally looking for someone who lives locally and is looking for a position that could offer flexibility to fit in around other commitments.

The role will involve some grounds work, day to day maintenance and school improvements work such as painting.

If you think this could be a role you are interested in, please call the school for further information.

The school phone number is 01303 251353.



The Riverside Centre, Dover An independent local charity

We offer social opportunities, activities, lunches and food & drinks Monday to Friday, as well as other essential services for the whole community

Our Services

2 course lunch ONLY £6.50

Snack bar with cakes and light snacks

Hot meal delivery service £7.50 for 2 courses delivered to your door

Foot clinic and hairdresser

Shopping service

Daily activities such as Bingo and seated exercise classes

Volunteering opportunities

Find us @

The Riverside Centre, Maison Dieu Gardens, Dover, Kent, CT16 1RL.
Tel: 01304 207268

riversidedover.org.uk



Friends of Age UK
Hythe & Lymington
ISO9001 Certified



Local beekeeper will collect any swarms of honey bees in the village free of charge.

Please call
Barrie Young on
07855 979315
for collection.



USEFUL CONTACTS INCLUDING ACTIVITIES and CLUBS	CONTACT NAMES	TELEPHONE NUMBER or EMAIL
Police Officer	Cheryl Ellis	Kent Police 101
Community Warden	Jan Henry	07811271303 Email: jan.henry@kent.gov.uk
Parish Council Chair	Philippa Seager	01303 245254
Parish Council Clerk	Maureen Leppard	01303 259564 Email: clerkcapellefernepc@btinternet.com
Dover District Ward Councillor	Martin Hibbert	Cllr-Martin.Hibbert@dover.gov.uk
Kent County Ward Councillor	David Beaney	David.Beaney@kent.gov.uk
Village Hall Webmaster/Chairperson	Sally Cook	253838 / 07730475838
Village Hall Committee Trustee Secretary / 100+ Club	Kath Hounsell	07376 614014 secretary.cvhmc@gmail.com
Village Hall Committee Lettings	Sue Leaning (Email preferred)	07939 095880 Email: sue.lettingscvh@gmail.com
Village Hall Farmers' Market	Sally Cook	253838 / 07730475838
Village Hall Committee Treasurer	Sarah Leonard	sarahbridgland74@hotmail.co.uk
Village Hall Committee Trustee	Roy Mann	07725943261
Village Hall Committee Trustee	Jerry Watson	07811987254
Village Hall Committee Trustee Vice Chairperson	Caroline Bunting	Email: c.bunting@btconnect.com 07885 406433
Bridge Club	Bob Jones	01233 756362
Capel Baptist Church	Pam Barr	01303 489006
Capel Cares and Ukraine	Janet Milliken	01303 257003
Capel Walkers	Neil Perrin	01303 243645
Dance Fusion	Charley	dancefusion23@gmail.com
Gardeners Association	Jean Tanton	01303 255982
Household Bill Savers	Phil and Karoline Taylor	01303 246887
Judo	Colin Carrott	01303 211594 / 07917131571
Remote Control Car Club	Derek Jeffrey	01303 259842
Short Mat Bowls	Ros Chandler	01303 255862
St Radigunds Church	Rev Brian Williams	01303 243784
St Radigunds Church Events	John Oliver	01303 251403
St Radigunds Church Bookings	Audrey Goaten	tryke@audrey47.plus.com
St Radigunds Choir	Jerry Spillett	07961 994097
Tai Chi	Anna	01304 205405
Twinning Association	Jerry Spillett	07961 994097
Ukraine "Homes and Help"	Janet Milliken	01303 257003
Welcome to Village Letter	Jackie Watson	01303 258865
WI	Caroline Bunting	07885 406433
Youth Club	Simon Withey	07860803767

Shepway Writers Group

Are you interested in creative writing?

Now's your chance to put pen to paper and write short stories, poetry, or even that book you've been meaning to write.

Our informal group meets every month in Folkestone. It's free to join, so why not come along and give it a go?

Contact Graham on 01303 470229 or 07722 560702.

**CAPEL-LE-FERNE
WILDLIFE FACEBOOK
PAGE - SEARCH
Capel-Le-Ferne Wildlife
AND JOIN OTHER
RESIDENTS DISCUSSING
ALL THE WILDLIFE
IN OUR VILLAGE**

SIGHTLOSS GROUP:

The Folkestone Macular Society Support Group meets on the last Friday each month from 10:30am to noon at

Best Western Clifton Hotel
1 - 6 Clifton Gardens
The Leas, Folkestone
CT20 2EB

All welcome. Meeting other people with macular disease helps you understand your condition, share information about treatments and stay independent.

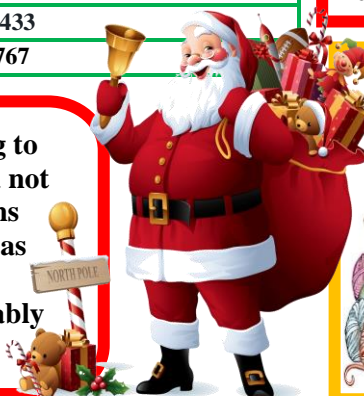
For more information call Margaret on 01303 226 877 or email: help@macularsociety.org

**Food Waste and
Recycling
Thursdays,
12th and 26th December**

**Food Waste and
Rubbish
Thursdays
5th and 19th December**

**Garden Waste
Fridays,
13th and 27th December**

At time of going to print, DDC had not issued collections for the Christmas period, so these dates will probably alter.



**KNIT and NATTER,
REECE ADAMS HOUSE,
CAULDHAM CLOSE
EVERY THURSDAY,
2pm - 4pm.
Everyone Welcome!
For more
information contact
Maggie 01303 245046.**



Food waste
and rubbish



Food waste
and recycling



Please ensure
your bins and
containers are
presented before
7am
on your
collection day

All Computer Problems Solved

Ring: 07968 129902 - Usual Fee **£55**

- *Computers, laptops, tablets, smartphones, TVs set up, PCs upgraded & repaired.
- *Refurbished computers available.
- *PC setup includes, Email, Anti-virus, Office Software, Data copying, printers etc.
- *Data recovery *Internet connections & Cloud problems
- *Web sites built & hosted with email - Est. £12 per month
- *Tuition available by a qualified tutor

Ring Tony for a fast and friendly service

See www.computers-in-kent.co.uk for details

Jessica Young

**MAAT, Accountancy, Book-keeping,
Payroll and VAT services**

For small businesses and sole traders
Free initial consultation. Flexible hours

Contact details:

Mob: 07704 518251.

Tel: 01303 259734

Email: contactyoungstoday@gmail.com

CAPEL VEHICLE SERVICES

All makes of cars serviced and repaired.
MOT's and repairs, mechanical and welding.
Tyres, Exhausts, Batteries Supplied and Fitted
Competitive rates. No VAT.

Friendly efficient service

Call John Horne 01303 255894

Local free collection and delivery available if required

DRIVEWAYS, PATIOS, PATHWAYS

- All types of paving
- Full driveway & dropped kerb packages
- Bricklaying & retaining walls
- Tarmac
- Concrete
- Foundations & Drainage

CONTACT US FOR A FREE ESTIMATE

T: 01303 253437

E: info@capelgroundworks.co.uk

www.capelgroundworks.co.uk



BRIGHT IDEA

ELECTRICAL SERVICES LTD

Colin Newton

www.brightideaelectrical.com

enquiries@brightideaelectrical.com



T 01303 778366

M 07855 431330



G B Haworth

Painter and Decorator

Interior and Exterior

Free Estimates Capel - 244206



**MOT Testing
Station**

MOT's

- Cars
- Bikes
- Vans
- Quads

Capel Garage

30 Old Dover Road,
Capel-Le-Ferne

Tel: 01303 254282



SERVICING

- Repairs
- Exhausts
- Tyres
- Batteries

NO JANUARY ISSUE

Items for February 2024 issue to be with
Maureen Leppard (Editor) at 39 Victoria Road, Capel-le-Ferne CT18 7LT,
(Tel: 01303 259564) or Email: clerkcapellefernepc@btinternet.com

by 6pm, Sunday, 19th January 2025

PLEASE NOTE IT IS EDITOR'S DECISION ON FINAL CONTENT