

GRAPEVINE

Capel-le-Ferne Village Newsletter

MAY 2023 - ISSUE NO: 325

IT IS EDITOR'S DECISION ON FINAL CONTENT.



CAPEL-LE-FERNE PARISH COUNCIL are Celebrating

The King's Coronation

Sunday 7 May

Street Party in the Village Hall,
12.30—15.00hrs.

Food and drink available to purchase or bring your own to share with your family and friends.

Children's art competition prize giving—artwork displayed in Village Hall



*Live Music

*Fish and Chips

*Coronation Cake

*Inflatable Pirate Ship
(Weather permitting)

*Ice Cream

*Face Painting

***Opportunity to have your photo taken with the King and Queen**

Due to limited space, FREE tickets on a first come, first served basis. Get yours today!

More info available www.capellefernepc.org.uk

"WHAT'S ON" IN CAPEL-LE-FERNE

Please check with organisation direct to clarify events & meetings.

If you know details of your event, please let Editor know so organisations avoid booking same date

5 th May	Capel Cares Coffee Morning (page 6)
Sunday, 7 th May,	KING'S CORONATION Street Party in the Hall
19 th May	Capel Cares Coffee Morning (page 6)
20 th May	WI BINGO – St Radigund's Church (page 6)
21 st May	Trip to Wisley Gardens (Page 18)
27 th May	Quiz Night at Hawkinge Rhodes Minnis Cat Sanctuary (page 13)
20 th June	Gardeners' Rose Show – Members only
24 th June	Community Lunch (page 2)
8 th July	Gardeners' Summer Show
23 rd July	Open Garden Capel Street (pg 8)
2 nd September	Gardeners' Autumn Show
16 th September	Youth Club community fundraising event featuring local live band Ratzkins
28 th September	MacMillan Coffee Morning (page 13)
21 st November	Gardeners' Annual General Meeting
19 th December	Gardeners' Christmas Party

CAPEL-LE-FERNE EVENING WI

theWI
INSPIRING WOMEN



EVENING

including Fun Game of Scattergories

SATURDAY 20th MAY 2023

Doors Open 6:45pm

Eyes Down 7:00pm

St. Radigund's Church (Albany Road)

ALL WELCOME

Bring your own refreshments

£6.50 for 6 games

All proceeds to Capel-le-Ferne Evening WI

Charity No:282597



CAPEL-LE-FERNE VILLAGE HALL
providing services to the local community

<http://www.capelvillagehall.com>

REGISTERED CHARITY No.281786

Something to celebrate? Want to hold a party?

Need to organise a meeting or training session?

Want to start a teatime chat group or a new sports club?

Licensed for most things (except hypnosis and boxing)

including sale of alcohol, PRS, raffles.

To view the hall, or make a booking contact

the letting secretary Sue Leaning on 07939 095880

Email preferred: sue.lettingscvh@gmail.com

The Farmers' Market seems to be doing well with an English cheese and honey stall starting this month, Dave Lewis back with his wooden planters, bird tables etc and Amie with her eco cleaning and laundry products plus the normal stalls of bakery, meat, jams, cakes, craft and the French cheese stall. Mick is also back with plants for the garden. One thing we have been asked about is a fruit and veg stall. We have had several such stalls over the years, but we know there is a lot of competition in the village with at least three companies delivering, not to mention the supermarkets. We have the opportunity soon of another fruit and veg stall, but if it is not supported then we will probably abandon the idea.

The Hall often seems to throw out challenges just when we feel we have got on top of the maintenance and repair agenda. We have as you know just completed decoration of four rooms in the hall. But it's the small issues that can sometimes get you down.

For some time, the radiator in the old post office room now known as Room 101 has not worked. A whole procession of central heating engineers, construction workers, stray experts, have attempted to fix it but to no avail. Various trustees have also had a go. This has meant cold Parish Council surgeries and frozen hours spent working on paperwork. Then along comes Barry with his hammer and behold all of a sudden, we are as warm as toast.

The main hall has very high ceilings which tend to attract dust, cobwebs, and all manner of wonderful things. Along comes Barry with his extendable duster and all is nice and clean.

Fred has washed down walls for the umpteenth time free of fingerprints and footprints, (yes on the walls particularly in the ladies' toilets!!), while all of the trustees have carried, lugged or otherwise got rid of items that have been left by various organisations over the years. We have also just ordered ten new 'comfy' chairs with arms designed to replace existing broken or missing ones. Roy has checked and selected masses of books and puzzles maintaining the book library largely all by himself. The Hall is now beginning to reap the benefits of the care that the trustees and volunteers have expended on it. It doesn't stop of course; it's a bit like painting the Forth Bridge. And there is still the roof.....

So, to Roy, Fred, other fellow trustees and not forgetting Barry and his hammer, I would like to say thank you.

RECYCLING - INSIDE THE HALL

Boxes are provided for: Used Stamps for Donkey Sanctuary and McMillan Cancer. Bottle Tops are also being collected again. Please place the above in the relevant boxes. A big thank you to everyone who puts their used stamps in the box in the Village Hall. Please carry on for these good causes.

100+ Club April Winners:

Congratulations to the winners.

1st Sarah Leonard

2nd Ros Chandler

3rd Steve Leonard

Thank you to all who have supported the 100+ Club this year.

It is never too late to participate.

Take care and stay safe.

Contact Caroline Bunting

c.bunting@btconnect.com

**COMMUNITY
LUNCH
ON
24 JUNE
FROM
MIDDAY**

Community lunch at Capel-le-Ferne Village Hall

Two course meal provided free of charge

A chance to chat with friends and neighbours

To make a booking contact Sally on 07730475838

**BOOKING
REQUIRED
AS LIMITED
NUMBERS
AVAILABLE**



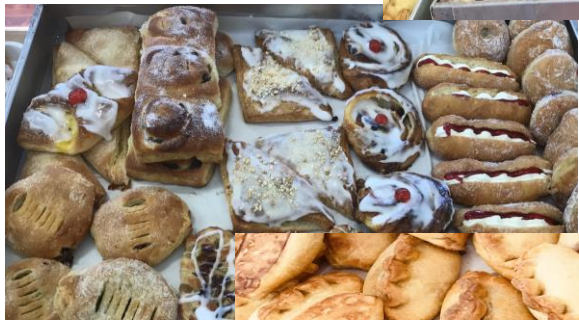
FARMERS' MARKET
 CAPEL-LE-FERNE VILLAGE HALL,
 LANCASTER AVENUE, CT18 7LX.
 EVERY TUESDAY, 10AM - 12NOON




Community event run by and for the community.

Come to the Farmers Market, check out the stalls and stay for a cup of tea or coffee.

- > Our bakery, supplied by Vanes of Dover. Selling different breads, rolls, Danish pastries, various cakes, sausage rolls, pasties and home-made quiche. Plus, place orders.
- > Rotherwood Butchers.
- > Julie selling her much praised cakes.
- > Eco friendling cleaning products.
- > Cheese stall on 1st Tuesday of month.
- > Eggs and Jam are available and our craft stalls.
- > Collection of cash donations for the Ukraine Refugees.
- > Community computer access point available, free of charge, if need help with on-line activities.
- > Also available, library/jigsaw loans.
- > Postal advice/service.




CHURCH SERVICES, MAY 2023
NEW - Revised service pattern from 7th May

Date	Alkham	Capel	Hougham
Sunday 7 th CORONATION WEEKEND	Evening Prayer 5.00 pm	Sung Eucharist 9.30 am	Coronation Songs of Praise 11.00 am
Saturday 13 th <i>Activities and stories at Messy Church, followed by tea.</i>		 3.00 – 5.00 pm	
Sunday 14 th 6 th Sunday of Easter	Sung Eucharist 9.30 am	Worshipping Together 11.00 am	Eucharist (said) 11.00 am
Sunday 21 st 7 th Sunday of Easter	Worshipping Together 9.30 am	Eucharist (said) 9.30 am	Worshipping Together 11.00 am
Sunday 28 th DAY OF PENTECOST	Eucharist (said) 9.30 am	Evensong 6.00 pm	Sung Eucharist 11.00 am

There is usually a Eucharist at St Radigund's, Capel at 11.00 on Thursday mornings.
Messy Vintage (for adults) meets at Capel Baptist Church at 2.30 p.m. on alternate Thursdays.

Visit us online at: www.church-alkham-capel-hougham.org.uk
and on Facebook: <https://www.facebook.com/BeneficeofACH>

From the vicarage

On my fourteenth wedding anniversary, I conducted a wedding for the first time ever. All went well until the end, when as I prepared to give the blessing, a camera-wielding guest suddenly approached the altar, stood astride the communion rail, and took the shot he wanted. The bride wasn't impressed.

On another occasion I found myself in an empty church - the guests still outside, the ushers having been too preoccupied with playing a prank on the groom to show them in.

But then I'll never forget the couple who, during the Covid-19 pandemic, decided to marry anyway, despite their guests having to sit in socially distanced bubbles, and without the trimmings that usually go with weddings – and it was as beautiful as it was simple.

As I write, the Coronation is just three weeks away – Britain's first in almost seventy years – and for me, its similarities with weddings are striking. Take the guest list, for example - the newspapers are full of who's been invited, who hasn't, and who may or may not be coming. The Coronation may be a church service, but neither the Archbishop of Canterbury nor the Dean and Chapter of Westminster Abbey have the final say over what happens – so there may yet be surprises in store.

Whatever happens, no doubt it will be a memorable occasion, and I'll be there in front of the TV, tea and cake in hand, looking on with the rest of the world - and hopefully all will go smoothly. But if the Archbishop of Canterbury should find himself being made to wait while someone takes a ciggie-break or the King stages an unrehearsed twirl of his robes for the photographers, I for one will know how he feels... *Brian*

PLEASE NOTE ... ST RADIGUND'S CHURCH IS AVAILABLE FOR LETTING PURPOSES

· Rates £10 per hour (Negotiable for block bookings, local residents).

· PA/Sound system available · WiFi available. Booking Policy available from Audrey Goaten, 32 Albany Road, Capel-le-Ferne. CT18 7LA. Tel: 01303 244735. Email: tryke@audrey47.plus.com

Vice President Eve welcomed members and guest speaker and her husband from Romney March Wools. She also welcomed two visitors, Jo and Elizabeth. Everyone stood to sing Jerusalem.

Ann Beecham, with the help of her husband, gave us a very informative talk on how they started to keep Jacob Sheep. The Jacob is a British breed of domestic sheep. It combines two characteristics unusual in sheep: it is piebald—dark-coloured with areas of white wool—and it is often polycerate or multi-horned. It most commonly has four horns. The origin of the breed is not known; broken-coloured polycerate sheep were present in England by the middle of the seventeenth century, and were widespread a century later. A breed society was formed in 1969, and a flock book was published from 1972. The Jacob was kept for centuries as a "park sheep", to ornament the large estates of landowners. In modern times it is reared mainly for wool, meat and skins. Among the many accounts of ancient breeds of piebald sheep, is the story of Jacob from the first book of the Hebrew Bible, called by Christians the Old Testament. According to the Book of Genesis (Genesis 30:31–43), Jacob took every speckled and spotted sheep from his father-in-law's (Laban's) flock and bred them, as his father-in-law wanted only the pure white flock. Due to the resemblance to the animal described in Genesis, the Jacob sheep was named for the Biblical figure of Jacob sometime in the 20th century. Ann said that Jacob Sheep could be traced back to pre-historic times and were at one point, an endangered species and were at nearly extinct. They are a type of sheep that cannot be driven by a sheepdog as they have a mind of their own. Ann had brought samples of Jacob wool. It was very soft and not as oily as other sheep and therefore better to spin and turn into garments. Eve gave the Vote of Thanks.

After Refreshments, the Correspondence was read out and Group Reports and dates were given.

It was reported at last month's meeting that the division of the profits from the Fashion Show were to be between the WI, the Rainbow Centre, Ukraine and Turkey/Syria. Capel-le-Ferne WI have to report the following as was read out to our members at April Meeting.

May 2023	Tuesday 9 th Capel Village Hall, 7.00pm	Power of Attorney and Resolutions
May 2023	Saturday 20 th St Radigund's Church 6.45 for 7.00pm	BINGO with Scattorgies
June 2023	Tuesday 13 th June Capel Village Hall, 7.00pm	Belly Dancing History and Demo

“Regarding the confusion re profits from the Fashion show, the Committee tenders their apologies for an error stating the division of the profits, i.e. The Rainbow Centre, WI, Ukraine, Turkey / Syria. We should have adhered to the fact that the Advertising and Tickets stated the profits from the Fashion Show would be split between, The Rainbow Centre and our WI, along with a donation to Pam's Malawi Girls School Project.

We understand there have been several objections by Members to our proposal, and would like to make the following comments. To date no monies have been sent to Ukraine, Turkey/Syria although, we are hoping that the Members would agree, that our donation to Pam can stand, providing the balance is split equally between The Rainbow Centre and our WI.”

We asked the members if they are in agreement to this suggestion with a show of hands and everyone agreed with one abstention. We thanked the members very much for their understanding in this matter and trust this has been resolved to everyone's satisfaction.

As we had some time in lieu, we had a game of Charades, which was enjoyed by the members to a fit of giggles from each team. May's Meeting is our Resolutions Meeting, and we have a speaker who is going to tell us all the ins and outs of Appointing an Attorney. The Raffle was drawn and Eve thanked everyone for coming and have a safe journey home.

CAPEL-LE-FERNE EVENING WI
theWI
INSPIRING WOMEN

B I N G O

EVENING

including Fun Game of Scattorgies

SATURDAY 20th MAY 2023

Doors Open 6:45pm
Eyes Down 7:00pm

St. Radigund's Church (Albany Road)

ALL WELCOME

Bring your own refreshments
£6.50 for 6 games

All proceeds to Capel-le-Ferne Evening WI
Charity No:282597

We would love some new members to join, we have sub-groups, interesting speakers, friendships & fun so do please get in touch with Caroline 07885 406433, we look forward to meeting you.

COMMUNITY SUPPORT



NEIGHBOURS HELPING NEIGHBOURS

A local organisation that aims to support people living in Capel

Staying independent and being part of the community is important to everyone but there are times during our lives when we could benefit from a little help from our neighbours. **CAPELCARES** is a local volunteer organisation run by residents of Capel to support those living in Capel. We can arrange to meet you in your own home to discuss any issues or challenges that you may have. Our volunteers are all local residents who have been DBS checked and have been trained in Safeguarding.

Our volunteers can help you with a variety of issues, including:

- Social visits for those living on their own.
- Home visits to support family carers.
- Assistance with shopping.
- Transport support, i.e. to & from medical appointments etc.
- Small house maintenance/gardening jobs.
- Regular phone contact.
- Helping you make contact with other services.



Referrals can be made by anyone for anyone. Our aim is to help residents in Capel remain safe, secure and independent in their own homes, as well as providing support to residents with unexpected, short term challenges that disrupt routine family life.

NEIGHBOURS HELPING NEIGHBOURS

To find out more or to arrange a visit please contact Jan on 01303 257003

Capel Cares GOOD NEIGHBOUR coffee mornings are now held every first and third Friday of the month.

To include free tea, coffee or hot chocolate with assorted biscuits.

A regular raffle is held and drawn on the day, with a range of amazing prizes to win.


EVERYONE WELCOME

Do you have short term or temporary mobility challenges?
Maybe from an accident, recent surgery,
or just aches and pains?



CC GOOD NEIGHBOURS has a range of mobility aids that could assist you.

To include:

- A light weight wheel chair 
- A banana board to assist getting from wheelchair to car seat.
- Mobility walker with an integral seat.
- Light weight, 3 wheels, walking frame.
- Aluminium walking sticks with adjustable height.
- Swivel seat pad for use in a car.



These are all available for use, free of charge, on a temporary loan basis.

If any of these aids would be a benefit for you or someone in your family, please contact

Jan Milliken on 257003, or Neil Perrin on 243645.

Volunteer with us

and make a difference to
someone's life



Could you spare a few hours a month to help your neighbour? We are looking for community minded people to join CAPELCARES as we seek to assist those in Capel le Ferne who just need a little help to lead independent lives in their own homes.

Call Jan on **01303 257003** for more details

CAPELCARES "from small acorns, mighty oaks will grow"

GOOD NEIGHBOURS COFFEE MORNING WITH CAPEL CARES

Missed the Easter fun of
hot, hot cross buns?

AND

entertainment from the village Bowls Club!

Don't miss out again,

come and join us on the

5th (Coronation weekend) & 19th of May.

This May we shall be holding two coffee mornings.

Double the drinks, double the biscuits,
double the raffle prizes.

The next 4 GOOD NEIGHBOURS
SOCIAL COFFEE MORNINGS will be

held on the

5th & 19th May and 2nd & 16th June

Usual time of 10.00am.

All are welcome.

Need transport? Contact Jan on 257003.

LOOKING FORWARD TO SEEING
YOU ON THE 5th & 19th May.

We'll be there, will you?

EXTRA DATES FOR YOUR 2023 DIARY

2nd & 16th June and 7th & 21st July



CAPELCARES



CAPELCARES



CAPELCARES



Approximately 30 villagers enjoyed coffee and toasted hot cross buns. A good time was had by all.



The next 4 GOOD NEIGHBOURS SOCIAL COFFEE MORNINGS will be held on the 5th & 19th May and 2nd & 16th June Usual time of 10.00am.



All are welcome.



Need transport? Contact Jan on 257003.





**NGS OPEN GARDEN
DOVER TRAIL**

Sunday 23rd July, 11am- 4pm
69 Capel Street, CT18 7LY

£5 per person - all are welcome!
(includes admission to two other gardens on
Queens Ave, Elms Vale)

Tea, Cakes and Plant sales

Proceeds will be donated
to nursing charities

CAPEL BAPTIST CHURCH

Preachers for May

7th Pam Barr

14th Rev Ruddle

21st Richard Blackwell

28th Geeg Marlam

Messy Vintage Thursdays, 4th and 18th
at 2.30pm - all welcome, worship, craft
and tea.

All Welcome

*For details of Preachers or if there are queries regarding
these details, please call 01303 489006 - Pam Barr
Please! A reminder that the public are requested not to
park in front of the gates on Sunday mornings as this is
a disabled access.*



Tai Chi - relax and get fit!

Thur, 6-7PM - Capel-le-Ferne Village Hall

For details contact Anna Dashwood

07736 849 194

www.pfstaiichi.com

JACQUI

SALON and MOBILE HAIRDRESSING

Reasonable Prices

CALL 01303 250655 or 07968 967057

For an appointment

PERMS AND SETS AVAILABLE

IF REQUIRED

**How are you going to celebrate the Coronation apart from watching it on TV
and supporting the Capel-le-Ferne activities?**

One excellent way to mark and remember the big event can be to come on one of the coaches that I am
running to **Brick Lane Music Hall** to see their **Coronation Music Hall Concert**.



It is such a unique venue and their concerts are always absolutely superb.

I am running two coaches (100 seats) on **May 2nd to their tea
matinee** when they provide lovely homemade sandwiches and cakes in
the interval and it is just a superb day out.

Their planned days to perform this show filled quite quickly so they are
putting on two more days and gave me a choice to book for May 2nd
before opening it to the public. One coach is already full but I have a few
seats to fill on the second coach. It is £65 which includes the show;
the tea; Coach; and drivers' tip.

They run a raffle and have always donated all the takings to The Pilgrims Hospice on the annual charity trips I have
run for 11 years to their adult Pantomime. Any profit made on the Coronation show will be donated to The Pilgrims
Hospice albeit that it is not a full charity-based booking.

Please be quick with your response if you would like to join us as I expect those last seats to fill fairly quickly.

Please contact me on johne.oliver22@gmail.com or phone 01303 251403.



Remembering the Few - at the National Memorial to the Few

The support that we have received from you all is something that we will always be so grateful for. It is your support and donations that help us continue our work to remember 'the Few' in these difficult times.

If you wish to make a donation to the Memorial Trust, please click here for more details <http://ow.ly/EkKh50DboEb>

We understand that not everyone is financially able to donate, but there are plenty of other ways that you can help. Following us on social media and leaving us a lovely Facebook, Google or TripAdvisor review will help the Memorial Trust no end!

Leave a TripAdvisor review here <http://ow.ly/qXU850DboEd>

Leave a Google review here <http://ow.ly/Czku50DboEc>

Are you planning a visit to the Memorial
Here's everything you need to know:

We're open every day between 10am and 5pm

It's free entry to the Memorial and The Wing. The Scramble Experience inside is our only paid-for attraction, and there is a nominal parking charge. We always welcome donations to keep this wonderful place running, though.

Our Cockpit Café is the ideal place to stop for a drink and provides superb refreshments

Our address is Battle of Britain Memorial, New Dover Road, Capel-le-Ferne, Folkestone, Kent, CT18 7JJ

We look forward to welcoming you!

Find out more via our website <http://ow.ly/iP6e50N3pqa>



Home to the National Memorial to the Few and The Scramble
New Dover Road (B2011), Capel-le-Ferne,
CT18 7JJ. Tel: No: 01303 249292

<https://www.battleofbritainmemorial.org/>

Facebook Page: <https://www.facebook.com/rememberthefew>



A classic cream tea, what more could you want? The Cockpit Café is the perfect place to stop for an afternoon snack or lunch. We have a great selection of hot and cold drinks, cream teas, sandwiches and hot snacks. Why not pop in?

We'd love to see you. Open every day between 10am and 5pm

This year marks the 30th anniversary of the unveiling of the Memorial by Her Late Majesty Queen Elizabeth the Queen Mother in July 1993. We'll be arranging a number of events to mark the anniversary, as well as lining up our spring and autumn talk series and organising our normal services of remembrance on Battle of Britain Day and Remembrance Day. Keep up to date on our events by signing up to our mailing list <http://ow.ly/4hBz50M4g9C>

If you're looking for somewhere different to hold your next meeting, then we could have the place for you. The clifftop location and stunning surroundings of the Battle of Britain Memorial make it an ideal venue for an away-from-it-all business meeting, sales event, product launch or small-scale conference. There are two dedicated meeting rooms and three spaces in total. Find out more here <http://ow.ly/hMNi50M4iwf>





CAPEL-LE-FERNE PARISH COUNCIL

Summary of some items discussed at meeting Tuesday, 18th April 2023



The Parish Council held their Annual Meeting, followed by the normal meeting. Draft Minutes and Annual Reports from the Chairperson, District and County Councillors can be read on website:

[Capel-le-Ferne Parish Council \(capellefernepc.org.uk\)](http://capellefernepc.org.uk)

The next Annual Meeting will be 16th April 2024.

Requests from public and Other Feedback:

- Items raised by public. - None.
- Councillors acknowledged that Cllr. Holliday was not seeking re-election, with much regret. The members wish to convey their sincere and grateful thanks to Gordon for his interest and services to the Parish Council.

Planning:

- Long out-standing applications, waiting DDC decision, to be chased.
- Parish Council response to development application Land South of Cauldham Lane on website: [Planning - Capel-le-Ferne Parish Council \(capellefernepc.org.uk\)](http://Planning - Capel-le-Ferne Parish Council (capellefernepc.org.uk))
- Suggested redesign of junction Cauldham Lane/Capel Street/B2011 discussed for future reference.

All other planning applications and comments available to view on Dover District Council website:

<https://www.dover.gov.uk/Home.aspx>

- Planning>Applications>View-Applications>Planning>Simple Search>Decisions

Neighbourhood Watch:

- Update given on breach of DDC's Public Space Protection Order for pétanque area. Investigations now underway by Kent Police and Environment Officers.
- Upgrade of CCTV cameras carried out. A larger hard-drive for the system's storage being investigated on cost.

Playing Field and Equipment:

- Queen's Green Canopy saplings reinstated by contractor.
- Junior seat swings being replaced due to general wear and tear. Seat on zip-wire to be replaced for Health and Safety reasons, due to canine damage.
- Thanks were expressed to Youngs Ground Maintenance for sanitising pétanque court and reinstating saplings at Queen's Green Canopy area.

Traffic Management and Highways:

- Double yellow lines – junctions with New Dover Road, see additional communication on page 1, to be distributed for residents' further consultation.
- Installation of drop kerbs on route to Playing Field, Village Hall and School at junctions Victoria Road, Beatrice Road and Lancaster Avenue, being investigated and costed by Kent Highways.

Pubic Rights of Way:

- Blockage of PROW ER252 noted and still under investigation with KCC East Kent PROW Officer.

Speed Watch: Our dedicated and keen team of volunteers, continue in force with sessions. All results of sessions are available on Parish Council Website. If you could spare 1-2 hours a week to help educate drivers, join the Capel-le-Ferne Team. More details on page 15.

Events: King's Coronation – Street Party in the Hall on Sunday, 7th May. Details on front page 11. Help to set up and clear away required and will be greatly appreciated.

Resilience Plan: Update of Plan ongoing. If you are able to offer services in the event of a crisis, please contact Parish Clerk, i.e., own a chainsaw to remove fallen tree blocking road etc.

Capel Cares: Details of next meetings (page 6).

Ukraine: Use of accumulated funding received and held, still being explored for refugees use in another area, either for a particular local event, vehicle usage in emergency or orphanages.

Grapevine Newsletter/social media:

Thanks were expressed to new volunteer deliverers, taking on routes that have become vacant or reorganised.

Village Hall: Photos supplied of new stalls – thanks to the Farmers' Market Team member for providing.

See full report on page 2.

Training/workshops/seminars:

- Members circulated with available courses.
- Councillors attended a Planning event with several interesting items and talks.
- **Matters Concerning the Parish:**
- Clifftop Café now open – dogs allowed outside.
- Lighthouse Inn – investigations continue on its future via Dover District Council and owners.

NEXT MEETING WILL BE ON
TUESDAY, 16th May 2023, FROM 7.30PM.
MINUTES/DECISIONS/AGENDAS ARE
AVAILABLE ON THE PARISH COUNCIL
WEBSITE: [https://www.capellefernepc.org.uk/](https://www.capellefernepc.org.uk)
PARISH COUNCIL MEETINGS OPEN TO PUBLIC.
IF YOU WISH TO ATTEND AND ADDRESS THE
COUNCILLORS, PLEASE INFORM CLERK.
Further information on any of the above
or to contact Parish Council, please write to Parish
Clerk, 39 Victoria Road, Capel-le-Ferne or
Tel: 01303 259564.
Email: clerkcapellefernepc@btinternet.com

PARISH COUNCIL SURGERY
Is there an issue you wish to discuss with
your Parish Council?
A Councillor and Parish Clerk will be available
on 1st Tuesday, of each month,
10am to 12:00noon at Farmers' Market,
Village Hall, in Room adjacent to Entrance.
NEXT SESSION WILL BE
ON TUESDAY, 2nd MAY

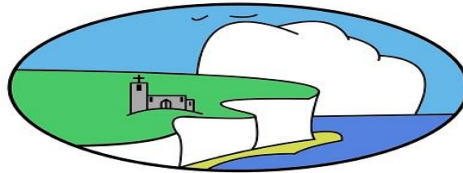
CAPEL-LE-FERNE PARISH COUNCIL

Clerk to the Council

Maureen Leppard

Website:

<https://www.capellefernepc.org.uk/>



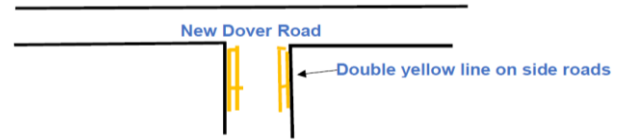
Capel-le-Ferne

39 Victoria Road
Capel-le-Ferne, Folkestone, Kent. CT18 7LT

Tel: 01303 259564

Email: clerkcapellefernepc@btinternet.com

April 2023



Dear Sir/Madam,

Capel Parish Council recently published an intention to consider applying for a Traffic Regulation Order (TRO), for Double Yellow Lines to be installed on side roads where they meet New Dover Road.

The feedback from Capel residents indicated that many were in favour of double yellow lines, but some residents voiced concerns about the lines being 50 metres in length, so preventing them parking in front of their property.

On Tuesday the 11th April, the Parish Council's Highways Improvement Plan working party had a virtual meeting with Kent County Council (KCC) Highways.

KCC referred to the double yellow lines at the junctions as, "Corner Protection", the lines would be 10 metres in length from the junction (*just over 2 car lengths*) and not 50 metres as previously stated.

Whilst the Parish Council appreciate that in some cases the lines may cross residents' driveways, but on balance, feel that the introduction of the lines would improve road safety at the junctions.

However, KCC Highways would need to carry out a survey of each junction to determine whether Double Yellow Lines would be suitable.

Once again, the Parish Council would welcome your views on this subject.

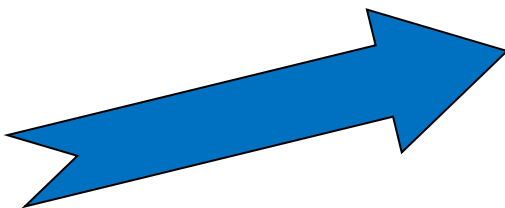
Please put your comments in writing to The Clerk for the Council,

By post to: 39 Victoria Road, Capel. CT18 7LT

or by email to: clerkcapellefernepc@btinternet.com

Yours faithfully

Capel-le-Ferne Parish Council



Please like Capel-le-Ferne Parish Council Facebook Page and join in for continuous up-to-date daily information and notifications between Grapevine Newsletters.

<https://www.facebook.com/CapelLeFerneParishCouncil/>

If you know someone that does not do Facebook, but would welcome receiving email updates and notifications relating to the Village, between the Grapevine Newsletters, please email clerkcapellefernepc@btinternet.com to be added to Parish Council email database.



More Neighbourhood Watch/Kent Police Information on Parish Council Facebook Page

BE AWARE and STAY ALERT

REPORT SUSPICIOUS ACTIVITY

Call 999 if:

- * a serious offence is in progress or has just been committed.
- * someone is in immediate danger or harm.
- * property is in danger of being damaged.
- * a serious disruption to the public is likely.

Call 101 for non-emergency enquiries.

Or online

<https://www.kent.police.uk/contact/af/contact-us/>

For advice and to report issues to KCC Trading Standards contact:

Citizens Advice consumer helpline

on 0808 223 1133

Consumer Advice scams action line

on 0808 250 5050

Monday to Friday from 9am to 5pm.

Action Fraud
National Fraud & Cyber Crime Reporting Centre
0300 123 2040

<https://crimestoppers-uk.org>
<https://www.citizensadvice.org.uk/>

[Trading Standards Checked](https://www.kent.gov.uk/trading-standards)
(kent.gov.uk)

Kent
County
Council
kent.gov.uk



**PUBLIC
PROTECTION**

**KEEP KENT SAFE
LATEST ALERTS**

SPRAY FOAM INSULATION SCAMS

Fraudulent businesses are using high pressure sales to persuade people to buy spray foam insulation products that are not fit for purpose. Some foam types will reduce the ventilation in your roof causing condensation and potentially decaying the roof timbers. Condensation affects the structure of your home and can make it difficult to sell or get a mortgage.

Foam spray can be costly to remove and deceitful companies are targeting homeowners offering to remove insulation and charging excessive fees for what may be unnecessary work.

If you are targeted by cold callers offering deals on insulation, say no! Do your research and ask for advice, never be pressured into making a decision.

[Read more from House of Commons Library "Spray foam insulation and mortgages"](#)

[Read more about loft insulation from Energy Saving Trust](#)

For advice or to report contact Citizens Advice consumer helpline 0808 223 1133

ELECTRIC SCOOTER RECALL

Black, Red and Grey Electric Scooter with Charger is presenting a Risk of fire / explosion / electric shock.

This product has been recalled as it presents a risk of electric shock, fire, explosion and injuries due to the poor quality charger and poor external build quality on the scooter [Read more from Office for Product Safety and Standards](#)

For advice or to report unsafe goods contact Citizens Advice consumer helpline 0808 223 1133

BIRD FLU UPDATE

Mandatory housing measures were lifted on Tuesday 18th April but scrupulous standards of biosecurity remain essential says DEFRA.

[Read more from the Department for Environment, Food and Rural Affairs](#)

Members of the public are reminded not to touch dead wild birds and are encouraged to [report findings of dead wild birds using the online reporting system](#) or by calling the Defra helpline (03459 33 55 77).

There has been increased sightings of three motorbikes without number plates ridden by youths across private land, causing criminal damage to the cropped fields on land adjacent and around Capel le Ferne.

If you see these motor-bikes, please report to 999 as advised by the police, as the bikes are not insured or road legal.



Need to report a crime?
Do it online



A quicker way for you to report crime and incidents



Receive your confirmation email and reference number immediately

Go to www.kent.police.uk/report



QUIZ **TICKETS £5**
 IN AID OF RHODES
 MINNIS CAT
 SANCTUARY REG
 CHARITY 262245

NIGHT
SATURDAY 27 MAY
 HAWKINGE VILLAGE HALL

91 CANTERBURY RD, HAWKINGE CT18 7BS
 7PM START
 TABLES OF 6-8 PEOPLE
 FREE PARKING ADJOINING THE HALL
 NIBBLES ON TABLES, B.Y.O DRINKS
 ALL PROFITS FROM THE QUIZ GO TO HELP CARE FOR
 THE SANCTUARY CATS.
 RAFFLE IN AID OF A FERAL CAT COLONY IN CROATIA
 TO BOOK RING THE SANCTUARY ON
 01303 862243
 OR EMAIL RMINNISCATS@GMAIL.COM

Rhodes Minnis Cat Sanctuary, Green Lane, Rhodes Minnis CT4 6XU

**It's time for
 Coffee Morning
 and you're invited**

Let's do whatever it takes
 to support people living with cancer.

Place: 49 OLD DOVER ROAD, CAPEL-LE-FERNE
Date: FRIDAY, 29TH SEPTEMBER 2023
Time: 10AM to 12.30PM
Contact: Gillian Howey

I'm hosting my Coffee Morning to raise money
 for Macmillan.
 There's a cuppa with your name on it.

**It's time for
 Coffee Morning
 and you're
 invited**

**MACMILLAN
 CANCER SUPPORT**

FR Registered with FUNDRAISING REGULATOR
 Macmillan Cancer Support, registered charity in England and Wales (251071), Scotland (SC039107) and the Isle of Man (854). Also operating in Northern Ireland. MAC3799_EVENT_POSTER

Royal Marsden cancer research jumble sale

This is a short note to say thank you to everyone involved in the recent jumble sale in aid of The Royal Marsden Hospital cancer research fund. Thank you to everyone who donated items to us, gave donations, and those who helped set up, sort and serve. It goes without saying, a huge thank you to those who turned up and spent their money with us.

We raised £970.55 which will be sent off to The Marsden where they will continue their fantastic research work, keeping us world leaders in the battle against cancer.

Please put 7th October in your diaries for our next sale, and perhaps start putting things to one side that we might be able to sell.

We shall look forward to seeing you the other side of Summer.

Many thanks for your support once again.

The Organisers

Smart Cleaning

For All Your Cleaning Needs

- Windows
- Carpets
- Gutter clearing/repairing
- Fascias and lastics
- Commercial & Domestic
- Offices
- Jet washing
- patios/decking

Please call or email to book
or for a quote:

Landline: 01303 778257

Mobile: 0777 584 8809

Email:

smartcleaning1313@gmail.com

Daniel Kirby Roofing & Building

www.builders-folkestone.co.uk



Quality material's and reasonable rates
Established 1996

Find us on

Based in Hawkinge Nr Folkestone Kent
Covering all roofing work from
small roof repairs to complete re-roofs.
In Folkestone and Hythe areas



What we do

- Fibreglass Grp flat roofs
- Felt Flat roofs
- New Pitched tile and slate roofs and repairs.
- Small and large jobs.
- Fascias soffits and gutters.
- Chimney repairs, rebuilds and removal.
- Conservatory conversions.
- Advice and free quotes



Visit full website below for more details

www.roofers-folkestone.co.uk

01303 892705

07916273886

Air Conditioning Installation Services



Call Us Today 01303 254282 or 07468 461494

Our Services

- ✓ AC Cooling and Heating Systems
- ✓ AC Installation Services
- ✓ AC Uninstallation Services

Why Choose Us?

- ✓ Affordable and Competitive Pricing
- ✓ Excellent Customer Service
- ✓ Safe Work Practices
- ✓ Quality Workmanship
- ✓ F Gas Certified



Capel Garage Air Conditioning Services

30 Old Dover Road,
Capel Le Ferne,
Folkestone,
Kent, CT18 7HN

Email: caplegarage@btconnect.com



Thursdays 5-6.30pm



07955926835

at **CAPEL LE FERNE**

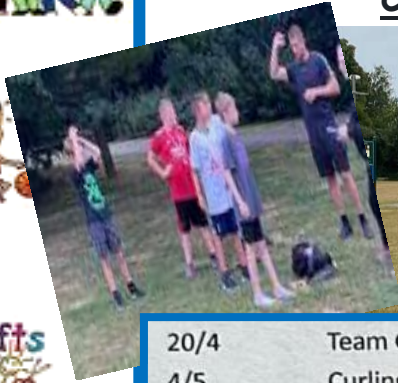
From 6.30pm - 7.00pm

VISITING

From 27th April 2023

We will be parking in Cauldham
Close for half an hour for anyone
that can't get along to the shop

CAPEL-LE-FERNE YOUTH CLUB



20/4	Team Games, Intro to 1 st Aid, Cake Decorating
4/5	Curling, Coronation Crafts, Coronation Cooking
18/5	Rounders, Park activities, Rio's Ice Creams (tbc) (No scooters or bikes please)
15/6	Tag Archery, Park activities, Hot Dogs
29/6	Bowling – Hollywood Bowl, Ashford (Details to follow)
6/7	Scavenger Hunt, Chips
20/7	Party in the Park – Games & Buffet



IT REALLY IS NOT A WASTE OF TIME!
WE NEED YOU!
TO HELP AND JOIN CAPEL-LE-FERNE COMMUNITY WATCH SCHEME



Can you help your community and spare a few hours to reduce speeding vehicles in your area?

Volunteers wanted

Would you like to help protect our residents from speeding vehicles?
 Could you spare 1 – 2 hours a week?
 If so, we would love you to join our enthusiastic Speed Watch Team.
 Community Speed Watch is an educational scheme to help people reduce speeding traffic though our village.
 The scheme enables volunteers to work within our village to raise awareness of the dangers of speeding and to help control the problem locally.
 If you are interested and would like to talk to someone about becoming a team member, contact the Parish Clerk on 01303 259564,
 Email: clerkcapellefernepc@btinternet.com

COMMUNITYSPEEDWATCH.ORG
 Community Speedwatch Online

Speedwatch are Life Savers

Capel Short Mat Bowls News (CSMBC)



Contacts

Wendy (Chairperson)259120
 Ros.....255862 Rachel..... 07853 193935

Anyone in the village wishing to try the sport of short mat bowls, please contact above members.



The Riverside Centre, Dover An independent local charity

We offer social opportunities, activities, lunches and food & drinks Monday to Friday, as well as other essential services for the whole community

Our Services

2 course lunch ONLY £6.50
 Snack bar with cakes and light snacks

Hot meal delivery service £7.50 for 2 courses delivered to your door

Foot clinic and hairdresser

Shopping service

Daily activities such as Bingo and seated exercise classes

Volunteering opportunities

Find us @

The Riverside Centre, Maison Dieu Gardens, Dover, Kent, CT16 1RL.
 Tel: 01304 207268 riversidedover.org.uk



GRAPEVINE ADVERTISING from 1st April 2022

This space could be advertising your commercial /business venture or, non-village organisation event.

Size 9cm x 3.5cm £15.00
 Size 9cm x 7cm £22.00
 Size 9cm x 13cm £30.00.
 Size 20cm x 13cm - £40.00 (½ page)

For further details contact Parish Clerk at 39 Victoria Road, or Tel: 01303 259564.

Email:
clerkcapellefernepe@btinternet.com

Stephen Huxtable Garden Services

- Private and commercial garden and grounds maintenance
- Grass cutting, Hedge cutting, Garden clearance, Turfing,
- High quality fencing supplied and erected

Free estimates

01303 891720

www.shgardenservices.co.uk

Bring photo ID to vote

VOTER ID Are you ready?

Your vote is your voice.
BE HEARD!



www.dover.gov.uk/voter-id



*District elections
 Thursday, 4th May 2023.*

NOTICE OF UNCONTESTED ELECTION

Dover District Council

STATEMENT OF PERSONS NOMINATED

Dover District Council

Election of Parish Councillors

The following is a statement of the persons nominated for election as a Parish Councillor for

Capel-Le-Ferne

Name of Candidate	Home Address#	Description (if any)	Reason why no longer nominated*
ALFSDOTTER Lisa Cecilia	(address in Dover)		
HARRIS Jamie Edward	129 Capel Street, Capel-Le-Ferne, Folkestone, CT18 7HA		
LAKE Anthony Michael	51A Old Dover Road, Capel-le-Ferne, Folkestone, Kent, CT18 7HP		
LEPPARD Cherry Netta	29, Albany Road, Capel-Le-Ferne, Folkestone, Kent, CT18 7LA		
PILCHER Keith Redvers	3 New Dover Road, Capel-Le-Ferne, Folkestone, CT18 7JJ		
SEAGER Philippa Charlton	Cranleigh Villa, 146, Capel Street, Capel-le-Ferne, Folkestone, CT18 7HA		
YOUNG Julie Lesley	25 Beatrice Road, Capel Le Ferne, Folkestone, Kent, CT18 7LH		

*Decision of the Returning Officer that the nomination is invalid or other reason why a person nominated no longer stands nominated.

In England, if a candidate has requested not to make their home address public, the relevant electoral area in which their home address is situated (or the country if their address is outside the UK) will be provided.

The persons above against whose name no entry is made in the last column have been and stand validly nominated.

Dated Wednesday 5 April 2023

Nadeem Aziz
Returning Officer

Printed and published by the Returning Officer, Council Offices, White Cliffs Business Park, Whitfield, Dover CT16 3PJ



D.E Roofing

Roofing and General Maintenance

Home: 01303 982116

Mobile: 07890 746664

Email: Darren@de-roofing.co.uk

Interesting speakers, a friendly quiz, and occasional visits to stately homes and their gardens. Visitors and new members are always welcome.

Capel-le-Ferne Gardener's Association

This friendly club welcomes new members and visitors to its meetings



**We meet every 3rd Tuesday of the month
at 7.30pm at St Radigund's Church Hall,
16 Albany Road, Capel-le Ferne CT18 7JT**

Interesting speakers on a variety of topics

Outings to gardens

Quizzes and social evenings

Christmas events

Three Shows a year in the village hall

Capel Gardeners will be making a trip to the RHS Gardens at Wisley, on Sunday, May 21st. The coach trip, including entry to the gardens will cost just £20, a very reasonable figure when you consider normal entry to the gardens alone is usually £15.

The coach will pick up from the layby near the village shop at 9:00am on the day, and should bring us all back before dark.

It is expected there will be some additional seats available, but priority will be given to Capel Gardeners' members. If you would like to be included, please contact Brian Castle on 01303 259105 or Bob Parsons on 07484 275551.

If you are not yet a member and would like to be, membership is just a low £8.00 per year.

We have interesting speakers, quiz evenings, a Rose show in June, and three open shows, and our enthusiastic members are always happy to share the benefit of their knowledge and experience.

The society holds Spring, Summer and Autumn Shows at the Village Hall, see What's On front page for dates.

The group meets on the third Tuesday of each month at 7:00pm in St Radigund's Church for informative presentations and quiz evenings.

We look forward to seeing you at the show, or any of our events.

Brian Castle - Tel: 01303 259105 or 07598371984

Jean Tanton - Tel: 01303 255982

USEFUL CONTACTS INCLUDING ACTIVITIES & CLUBS	CONTACT NAMES	TELEPHONE NUMBER
Police Community Safety Officer	Sarah Mcguinness	Kent Police 101
Community Warden	Jan Henry	07811271303 Email: jan.henry@kent.gov.uk
Parish Council Chair	Philippa Seager	01303 245254
Parish Council Clerk	Maureen Leppard	01303 259564 Email: clerkcapellefernepc@btinternet.com
Dover District Ward Councillor	Martin Hibbert	Cllr-Martin.Hibbert@dover.gov.uk
Village Hall Webmaster/Chairperson	Sally Cook	253838 / 07730475838
Village Hall Committee Lettings	Sue Leaning (Email preferred)	07939 095880 Email: sue.lettingscvh@gmail.com
Village Hall Farmers' Market	Sally Cook	253838 / 07730475838
Village Hall Committee Treasurer	Sarah Leonard	sarahbridgeland74@hotmail.co.uk
Village Hall Committee Trustee	Roy Mann	07725943261
Village Hall Committee Trustee	Jerry Watson	07811987254
Village Hall Committee Trustee 100+ Club/Vice Chairperson	Caroline Bunting	Email: c.bunting@btconnect.com 07885 406433
Bridge Club	Bob Jones	01233 756362
Brownies	Register on website	https://www.girlguiding.org.uk/what-we-do/brownies-7-10/
Capel Baptist Church	Pam Barr	01303 489006
Capel Cares and Ukraine	Janet Milliken	01303 257003
Capel Walkers	Neil Perrin	01303 243645
Divas Dance	Rebecca Uden	01303 893650
Gardeners Association	Jean Tanton	01303 255982
Household Bill Savers	Phil & Karoline Taylor	01303 246887
Judo	Colin Carrott	01303 211594 / 07917131571
Remote Control Car Club	Derek Jeffrey	01303 259842
Short Mat Bowls	Ros Chandler	01303 255862
St Radigunds Church	Rev Brian Williams	01303 243784
St Radigunds Church Events	John Oliver	01303 251403
St Radigunds Church Bookings	Audrey Goaten	01303 244735
St Radigunds Players and Choir	Jerry Spillett	01303 242146
Tai Chi	Anna	01304 205405
Twinning Association	Jerry Spillett	01303 242146
Ukraine "Homes and Help"	Janet Milliken	01303 257003
Welcome to Village Letter	Jackie Watson	01303 258865
WI	Caroline Bunting	07885 406433
Youth Club	Simon Withey	07860803767

Shepway Writers Group

Are you interested in creative writing?

Now's your chance to put pen to paper and write short stories, poetry, or even that book you've been meaning to write.

Our informal group meets every month in Folkestone. It's free to join, so why not come along and give it a go?

Contact Graham on 01303 470229 or 07722 560702.

**CAPEL-LE-FERNE
WILDLIFE FACEBOOK
PAGE - SEARCH
Capel-Le-Ferne Wildlife
AND JOIN OTHER
RESIDENTS DISCUSSING
ALL THE WILDLIFE
IN OUR VILLAGE**

SIGHTLOSS GROUP:

The Folkestone Macular Society Support Group meets on the last Friday each month from 10:30am to noon at

The View Hotel, 30-32 Clifton Rd, Folkestone CT20 2EF.

All welcome. Meeting other people with macular disease helps you understand your condition, share information about treatments and stay independent.

For more information call Margaret on 01303 226 877 or email: help@macularsociety.org

**KNIT & NATTER,
REECE ADAMS HOUSE,
CAULDHAM CLOSE
EVERY THURSDAY,**



**2pm - 4pm.
Everyone Welcome!
For more
information contact
Maggie 01303 245046.**

**Food Waste and
Recycling
Thursdays,
4th and 18th May**



**Food Waste & Rubbish
Thursdays
11th and 25th May**

**Garden Waste
Fridays
5th and 19th May**



**Please ensure
your bins and
containers are
presented before
7am
on your
collection day**



All Computer Problems Solved

Tel: 01303 241325 Mob: 07968 129902

Usual Fee **£55**

*Computers, laptops, tablets, smartphones, TVs set up, PCs upgraded & repaired.

*PC setup includes, Email, Anti-virus, Office Software, Data copying, printers etc.

*Data recovery *Internet connections & Cloud problems

*Web sites built & hosted from £10 per month.

*Tuition available by a qualified tutor

Ring Tony for a fast and friendly service

See www.computers-in-kent.co.uk for details

Jessica Young,

T/A Young's Accountancy Services



MAAT, Accountancy, Book-keeping, Payroll and VAT services

For small businesses and sole traders

Free initial consultation. Flexible hours

Contact details:

Mob: **07704 518251** Tel: **01303 479171**

Email: contactyoungstoday@gmail.com

BRIGHT IDEA

ELECTRICAL SERVICES LTD

Colin Newton

www.brightideaelectrical.com

enquiries@brightideaelectrical.com



T 01303 778366



M 07855 431330



G B Haworth



Painter & Decorator

Interior & Exterior

Free Estimates Capel - 244206

CAPEL VEHICLE SERVICES

All makes of cars serviced and repaired.

MOT's & repairs, mechanical and welding.

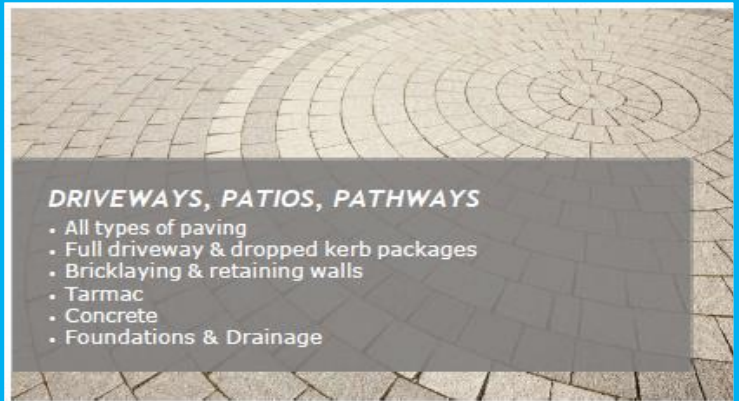
Tyres, Exhausts, Batteries Supplied & Fitted

Competitive rates. No VAT.

Friendly efficient service

Call John Horne 01303 255894

Local free collection and delivery available if required



DRIVEWAYS, PATIOS, PATHWAYS

- All types of paving
- Full driveway & dropped kerb packages
- Bricklaying & retaining walls
- Tarmac
- Concrete
- Foundations & Drainage

CONTACT US FOR A FREE ESTIMATE

T: 01303 253437

E: info@capelgroundworks.co.uk

www.capelgroundworks.co.uk



FITTING CREATIONS

BLINDS – CURTAINS – SHUTTERS



Friendly Family Business

Local to you

01303 894882 07506 144427

www.fittingcreations.com

info@fittingcreations.com



**MOT Testing
Station**

MOT's

- Cars
- Bikes
- Vans
- Quads

Capel Garage

30 Old Dover Road,
Capel-Le-Ferne

Tel: 01303 254282



SERVICING

- Repairs
- Exhausts
- Tyres
- Batteries

NO JANUARY ISSUE

Items for June 2023 issue to be with Maureen Leppard (Editor) at 39 Victoria Road, Capel-le-Ferne CT18 7LT,

(Tel: 01303 259564) or Email: clerkcapellefernepc@btinternet.com

by 6pm, Sunday, 14th May 2023.

PLEASE NOTE IT IS EDITOR'S DECISION ON FINAL CONTENT