

GRAPEVINE

Capel-le-Ferne Village Newsletter

DECEMBER 2020 - ISSUE NO: 299

IT IS EDITOR'S DECISION ON FINAL CONTENT

With the impending decisions on the Covid-19 situation to be made by the Government, some changes may be made following the delivery of this issue.

Please like and join our Facebook Page for continuous up-to-date daily information and notifications.

<https://www.facebook.com/CapelLeFerneParishCouncil/>

If you know someone that does not do Facebook, but would welcome receiving email updates and notifications relating to the Village, between the printed and delivered Grapevine Newsletters, please email clerkcapellefernepc@btinternet.com so they can be added to the Parish Council email database.

A very BIG thank you to all our volunteer deliverers, who continue to bring the Grapevine Newsletter to your door!



***From all advertisers, organisations and everyone,
We wish you all a very Merry Christmas
And***

A Happy New Year

May you all Take Care, Stay Safe, and Keep Well.

Together,

***We can Control the Virus,
Save the NHS and Save Lives.***

Winter Boot Fairs

The boot fairs normally held during the winter months at the village hall will not now take place. Capel Village Hall Management Committee have decided with regret that social distancing cannot be guaranteed and therefore have cancelled the events.

With Government Regulation, it is quite difficult to make any plans for future, so please check with each organisation direct to clarify events and meetings.

"WHAT'S ON" IN CAPEL-LE-FERNE

If you know details of your event in advance, please let Editor know so organisations avoid booking same date

19th Jun

Youth Club 40th (41st) Anniversary Party



Capel le Ferne Village Hall providing services to the local community

<http://www.capelvillagehall.com>

REGISTERED CHARITY No.281786

Something to celebrate? Want to hold a party?
Need to organise a meeting or training session?
Want to start a teatime chat group or a new sports club?
Licenced for most things (except hypnosis and boxing)

including sale of alcohol, PRS, raffles.

To view the hall, or to make a booking
contact the letting secretary Sue Leaning

Email preferred: fredandsueleaning@yahoo.co.uk - Or on 07939 095880



You plan, you enable and you prepare for eventualities and then along comes a month long lockdown. All so demoralising. So now lockdown number two has forced the closure of the hall for the second time and we are in limbo again. Events such as the MacMillan coffee morning and the AGM had to be postponed. Groups which had just got going again have had to cancel their sessions and new hirers are disappointed not to be using the hall. Only the Playgroup and the Farmers' Market (food and post office only) have remained open in accordance with Government legislation but with little support, it would appear that the latter is likely to close too... and for good.

During the first lockdown when the supermarkets were struggling to provide home deliveries, when bread, eggs, (and toilet rolls) etc were hard to come by, the Farmers' Market stayed open providing the essentials for residents and non-residents. Assisted by the good weather and working within the COVID 19 legislation our volunteers got out the tables, carried the goods from car/vans to the stalls, acted as marshals, dealt with enquiries and essentially helped out where help was required. People were on furlough or working from home and therefore could get to the Market and often would shop for those who were shielding. Our stalls were dealing with over three times their normal volumes and several times the bread stall people went home early. We were also supported by the Community Warden (who makes a great cup of tea). Once lockdown finished our craft stalls came back but numbers attending fell. This is a shame as besides the various stalls, the Farmers' Market has always been a community event where people could meet for a chat over coffee or teacake.

Second time around in lockdown a lot of people are back at work while others are still reluctant to leave the house. Numbers of people using the Market have fallen so much that the Manager is seriously considering closing and it is unlikely that it would re-open once shut. The Market has been running for 15 years and during that time has acted as a focal point for many in the village.

If you remember we had taken the opportunity before lockdown to have a good clear out of the hall and are following this with a clear out of all the stuff kept above the stage. This includes a load of old tyres once used for the Village Spectacular so if anyone needs a load of old tyres (!) please contact the Hall Trustees.

We are planning to have the Coffee Morning and the AGM on dates yet to be determined and should know more once the second lockdown is over but probably in January. Keep your eyes posted on the Parish Council emails for further information.

Winter Boot Fairs

The Boot Fairs normally held during the winter months at the village hall will not now take place. Capel Village Hall Management Committee have decided with regret that social distancing cannot be guaranteed and therefore have cancelled the events.

RECYCLING - INSIDE THE HALL

Boxes are provided for:

Used Stamps for Donkey Sanctuary and McMillan Cancer. Bottle Tops are also being collected again.

Please place the above in the relevant boxes.

A big thank you to everyone who puts their used stamps in the box in the Village Hall.

Please carry on for these good causes.

100+ CLUB

Draw numbers for November were as follows:

1st Paul Sherrington 2nd Don Bunting

3rd Jean Jeffrey

Take care and stay safe.

Contact C Bunting - c.bunting@btconnect.com

Capel-le-Ferne History Book

"Village in the Clouds"

Copies still available £5 each from
Cherry: Tel: 01303 255114



CAPEL-LE-FERNE FARMERS MARKET
 Community event run by and for the community
 Every Tuesday 10 am to 12.00 noon.
 Village Hall, Lancaster Avenue, Capel-le-Ferne,
 Folkestone CT18 7LX



Visit us on Facebook <https://www.facebook.com/groups/Capelfarmersmarket/>

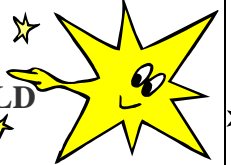
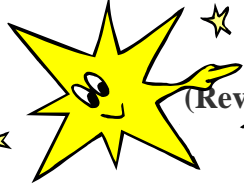




I have not produced a schedule of services for December, as at the moment it remains to be seen whether the current restrictions will have eased by then. I will do my best to ensure that up-to-date information is available via our website, Facebook page, and on church noticeboards.

Best wishes, Brian

(Rev'd) Brian Williams, 20 Alexandra Road, Capel le Ferne, Folkestone, CT18 7LD
Telephone Numbers: (01303) 243784 ... 07910 572036



...will be back as soon as we can meet again safely.



Visit our Facebook page - <https://www.facebook.com/BeneficeofACH/> - for our weekly online services.

From the vicarage

As December approaches, Advent Calendars and chocolate are the first things that come to mind for many. Beginning on the fourth Sunday before Christmas, Advent is a time of reflection and spiritual preparation for Christians. In church, the readings recall God's promises spoken by the prophets; John the Baptist at the river, warning the crowds to prepare for the coming of one who is greater than he is; and Mary accepting God's invitation to be the mother of Jesus.

It is intended to be a solemn time, and accordingly on the first Sunday of Advent the church is bereft of flowers, the hangings are a sombre purple, the winter gloom pierced only by the first candle on the Advent Ring.

However, this time of watching and waiting – just over three short weeks – tends to get cut short. Week One, and the rest of the world is already busily shopping, partying, and wishing everyone a Happy Christmas. Week Two, and a Christmas tree has replaced the church flowers. Week Three, and pleas that it's still too early to sing carols risk being met with accusations of unseasonal grumpiness. Week Four, and the place is festooned with cards, bottles, toffees, and biscuits from those who have already set off to spend Christmas with family elsewhere.

That, of course, is what usually happens. As I write, Lockdown 2 is under way, and I'm meeting enquiries about Christmas services this year with more of a sense of hope than expectation – but then I remember that I succeeded in celebrating Easter by lighting the Paschal Candle at the Easter Garden on the Vicarage drive. Maybe the solemnity of Advent will seem longer than usual this year – but Christmas will happen! A Happy Christmas, and a Peaceful New Year. Brian



PLEASE NOTE ... BOTH ST RADIGUND'S CHURCH AND HALL ARE AVAILABLE FOR LETTING PURPOSES

- Rates £10 per hour (negotiable for block bookings, local residents).
- PA/Sound system available • WiFi available

Booking Policy available from

Audrey Goaten, 32 Albany Road, Capel-le-Ferne. CT18 7LA.

Tel: 01303 244735. Email: tryke@audrey47.plus.com





5
The Riverside Centre in Dover
(formerly Age Concern)



I am the manager of The Riverside Centre in Dover (formerly Age Concern).

We deliver from our centre for the residents of Dover and surrounding villages.

We are a registered charity (1143453) and are letting the residents of Capel-Le -Ferne know what we do and the services that we offer such as meal deliveries, chiropody, information & advise.

The Riverside Centre is now open for day care services.

Due to the changes with socially distancing we are having to change the way in which we operate. The number of people that can use the centre per day is now reduced, therefore there will not be the facility to drop in. All people using the centre have been allocated a day to attend and have formed bubbles, therefore attending with the same people each week. We do have very limited spaces left for day care services – to check for availability please call the centre on 01304 207268.

Facilities at the day centre include a snack bar where you can purchase food & drink (to include takeaway items) and a 2 course lunch. Activities are currently limited whilst we are practicing being COVID-19 safe.

Lunch Club

Lunch and a hot drink. As numbers are limited it is advisable to book in advance for this lunch club.

I look forward to hearing from you. Kind regards, Maggie Paterson, Centre Manager

The Riverside Centre, Maison Dieu Gardens, Dover, Kent, CT16 1RL

Tel: 01304 207268. Email: centremanager@riversidedover.org.uk

Website: www.riversidedover.org.uk

**COMMUNITY
SUPPORT**



NEIGHBOURS HELPING NEIGHBOURS

A local organisation that aims to support people living in Capel

Staying independent and being part of the community is important to everyone but there are times during our lives when we could benefit from a little help from our neighbours. **CAPELCARES** is a local volunteer organisation run by residents of Capel to support those living in Capel. We can arrange to meet you in your own home to discuss any issues or challenges that you may have. Our volunteers are all local residents who have been DBS checked and have been trained in Safeguarding.

Our volunteers can help you with a variety of issues, including:

- Social visits for those living on their own.
- Home visits to support family carers.
- Assistance with shopping.
- Transport support, i.e. to & from medical appointments etc.
- Small house maintenance/gardening jobs.
- Regular phone contact.
- Helping you make contact with other services.

Referrals can be made by anyone for anyone. Our aim is to help residents in Capel remain safe, secure and independent in their own homes, as well as providing support to residents with unexpected, short term challenges that disrupt routine family life.

NEIGHBOURS HELPING NEIGHBOURS

To find out more or to arrange a visit please contact Jan on 01303 257003

We will continue to hold a regular social coffee morning every month when lock-down guidance is lifted. Details of date, venue and time to be notified when known. Come and join us, meet with your neighbours. Find out more about **CAPELCARES** or just enjoy a cup of tea or coffee (with biscuits).

EVERYONE WELCOME

**Volunteer
with us**

and make a difference to
someone's life



Could you spare a few hours a month to help your neighbour? We are looking for community minded people to join CAPELCARES as we seek to assist those in Capel le Ferne who just need a little help to lead independent lives in their own homes.

Call Jan on **01303 257003** for more details

CAPELCARES "from small acorns, mighty oaks will grow"

WORRIED ABOUT CORONAVIRUS

HELLO! If you, or someone you know, are self-isolating,

can **CAPELCARES** help?

We are: **CAPELCARES**,
local volunteers who are all DBS checked.

You can contact us via Jan on 01303 257003.

If you are self-isolating due to COVID-19 we can help with:

- Collection of shopping.
- Collecting medications.
- Other urgent supplies.
- A friendly phone call.

Coronavirus is contagious.

Please take every precaution to ensure you are spreading only kindness.

"from small acorns, mighty oaks will grow"



Thursdays

Streetz 2 Streetz

WEDDINGS

MOBILE

KIDS PARTIES


**FISH
&
CHIP
UNIT**

**CHRISTENINGS
CHARITY EVENTS
SCHOOL FETES**

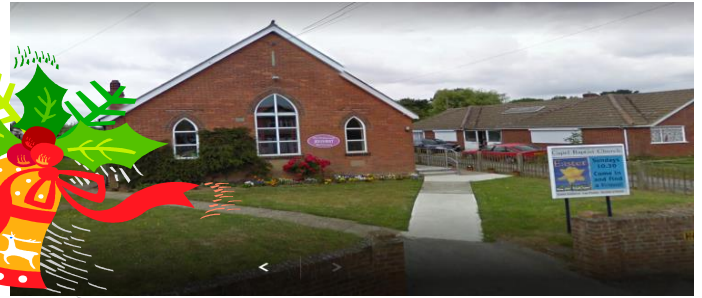
**FISH SUPPERS
PARTIES
BOOT FAIRS**

**CALL: 07955 926 835
FOR BOOKINGS & DETAILS**

**Amin Stores
5-7pm**

CAPEL BAPTIST CHURCH

The Chapel has reopened and for the foreseeable future it will be Pam Barr leading worship each week.



If there are queries regarding these details, please call 01303 489006 - Pam Barr
Please! A reminder that the public are requested not to park in front of the gates on Sunday mornings as this is a disabled access.

BRIGHT IDEA

ELECTRICAL SERVICES LTD
Colin Newton
www.brightideaelectrical.com
enquiries@brightideaelectrical.com

T 01303 778366
M 07855 431330


- CCTV
- Alarms
- Telecoms
- Data
- WiFi



For excellent rates call JOHN
Fully qualified ex BT engineer
with 12 years experience.

John Waller
Kent Cables Ltd
Mobile: 07766 068100 Tel: No: 01304 225420
Email: kentcables@outlook.com
Website: www.kentcables.co.uk

Half the price of BT OPENREACH GUARANTEED

Capel-le-Ferne Gardener's Association

This friendly club welcomes new members and visitors to its meetings



**We meet every 2nd Tuesday of the month
at 7.30pm at St Radigunds Church Hall,
16 Albany Road, Capel-le-Ferne CT18 7JT**

Interesting speakers on a variety of topics

Outings to gardens

Quizzes and social evenings

Christmas events

Three shows a year in the village hall

FOR MORE INFORMATION CONTACT

Vanessa Cook or Jean Tanton

01303 256106 01303 255982



I hope you gardeners are all keeping well.

We have put things on hold for now.

I am hoping things will soon get back to normal
will let you know when things change.

In the meantime keep well. Brian Castle

Partners in IT –

Looking after YOUR technology

Red Boot Tech Services and The Computer Lady provide outstanding IT support. From a single repair or upgrade to a monthly proactive maintenance contract, we support your Home and Business needs for both PC and Mac.

Windows 7 support from Microsoft ended in January 2020. We provide cost-effective upgrades to Windows 10 whilst also improving performance by installing a Solid-State Disk from only £150/computer.

Red Boot
Tech Services

THE COMPUTER LADY
For a fast and reliable service

dave@rbtechservices.co.uk – 07970 804060

alison@thecomputerlady.co.uk – 07802 470675

Are you looking for a venue to host your next business meeting? Hunting Lodge is the perfect space and offers an airy room to suit all kinds of meetings.



Want to help raise £1,000 for the Trust, just by clicking on a link? Insurer Ecclesiastical is giving away £1,000 to each of ten charities on 12 days across the Christmas period. To be in with a chance of winning one of the awards, we need as many nominations as possible. Just click on movementforgood.com/12days - and encourage your friends and family to do the same! Please choose the Battle of Britain Memorial Trust CIO when you are offered a choice - and click on education and skills as the category.

Find out more here: <http://ow.ly/3Xxi50CpltG>



**Events at the Battle of Britain Memorial
New Dover Road (B2011), Capel-le-Ferne,
CT18 7JJ. Tel: No: 01303 249292**

For all News from
The Battle of Britain Memorial
Home to the National Memorial to the
Few and The Scramble Experience

Website:

<https://www.battleofbritainmemorial.org/>

Facebook Page:

<https://www.facebook.com/rememberthefew>

**Newsletter from
the Battle of Britain Memorial
Home to the National Memorial to the Few and
The Scramble Experience
FOLLOWING LINK TO VIEW**

<https://www.battleofbritainmemorial.org/read-our-latest-enewsletter/>

A click and collect service is now available for our online shop ! It's now even easier to buy your Christmas gifts from our unique selection of books, prints, clothing, models, memorabilia and much, much more.

Although the shop within The Wing is closed in response to government guidelines, our staff are still busy dealing with online sales, and can now offer 'click and collect' as well as delivery on all the items we offer, from Airfix kits for the youngsters to prints and books signed by members of the Few.

The click and collect option will appear automatically as part of the checkout process. All you need to do is click the option and check out as usual. You will then receive an email from one of the Trust's hard-working team to arrange a convenient date and time to collect your purchase from the site at Capel-le-Ferne.

Please note that this option must only be used for click and collect purchases. Items bought in this way will not be posted under any circumstances.

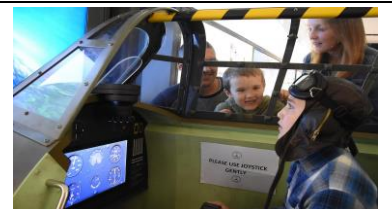
Read more here : <http://ow.ly/OTFT50CnVKH>

See our online shop here : <http://ow.ly/4XVz50CnVKI>



The Memorial is the ideal place to teach the younger generation about the bravery and sacrifice of the Few.

While the Memorial is a place for reflection, we are happy for children to run around in the fresh air and enjoy the views. We know that they will love the replica Spitfire and Hurricane too! We only ask that you take a few minutes to explain to them the significance of the Memorial and what it stands for.



Raise funds for the Trust every time you shop on Amazon! Trust supporters taking advantage of Black Friday deals can help the Battle of Britain Memorial Trust at the same time – at no cost to themselves.

The Trust is signed up to AmazonSmile, an easy way to contribute to your favourite charity every time you shop online, something all of us are being forced to do at the moment with lockdown still in force.

Just sign in to Amazon using the link below and Amazon will donate 0.5% of the money you spend to the Trust, automatically and at no cost to you. You simply have to choose the Battle of Britain Memorial Trust as your favourite charity; the rest takes care of itself. With Black Friday Week just around the corner, from Friday 20th to Monday 30th November, this is a great time to show your support for the Trust and the work it does to promote the memory of the Few by making all your purchases via AmazonSmile. Read the full story

here : <http://ow.ly/zZRH50CoTIW>

Start shopping via the following link : <http://ow.ly/5NW950CoTIU>



CAPEL-LE-FERNE

EVENING WI

Hello Everyone,

As we are getting closer to Christmas, I was just thinking about some of the enjoyable Christmas party meetings we have had. It was always a treat to see plates of the delicious assortment of food brought in by the members for the buffet table, they looked so good that you had to try one but just to be sure had to try at least another one, all this with a glass or two of mulled wine if you weren't driving of course. It was always good to see how much the guests were enjoying themselves too as well as the members. There was a lot of hard work put in to keep everyone feeling festive, tables to be set up and decorated, pass the parcels to be wrapped, extra nice raffle prizes, the Christmas card post office, challenging quizzes for the tables, Christmas music on the sound system to sort out and all the entertainment for the evening and then the horrible job of washing up and clearing away at the end. But it is all worth it to see the smiles on all the faces when they are having a good time. One-year Eve did a "Name the Teddy Bear" raising £50 for the Macmillan Cancer charity. Jean knitted the teddy a pretty outfit and for decency's sake even made matching knickers for it. We have had some very good groups and choirs to entertain us with their great singing voices and everyone joining



in with the Carols and Christmas songs, even those of us with awful voices could mime along to them if they didn't want to put the others off with their terrible singing. Another time Coleta with the help of Vera, Caroline and Jan put together a funny puppet show they were all behind a sheet and were the the arms and legs poking out from behind the sheet, if we hadn't laughed so much at that along came Eve and Jerry making us laugh even more when they appeared dressed in huge hats with faces painted on their tummies. We also had Gillian and Mary doing a hilarious sketch about a snooty posh new neighbour and a down to earth one having a conversation, they were really funny and so good at acting their parts. I hope this brings back some happy memories and you can smile or have yourself a little chuckle as you remember these and other good times you have had and for those that haven't become members yet, just look what you have been missing out on.

I hope you all have a nice Christmas no matter what you are doing and wish you all a happy new year and hopefully at some point we will all be able to meet up again. So, hold your glass up to toast the new year in and cheers to all.

CAPEL HEDGEHOG CARE

Facebook Page:

<https://www.facebook.com/groups/198980734375665/>

 We have a collection bin
in the foyer
of the Village Hall.
If anyone would like to
donate clean newspapers or meaty wet/dry cat food,
it would be really appreciated.
THANK YOU 



We have lived in what was the old butchers in Capel Street for the last 6 years and have attempted to find old pictures or information about it.

- Was it built as a shop or converted at a later date?
- What does the 1815 date and the name on the front of the house mean as it's not the date the house was built?

We have some old papers that came with the house that give some information on previous owners but some of it is a bit confusing. We do know that the people who lived here before us were here a long time. I was out a couple of months ago when the butcher's son, an elderly gentleman now, came to the house and introduced himself to my husband. He told him about his time here as a child, I wish he had got contact details so we could have talked to him more. So i'm reaching out to any of the readers who may have any information or photos of the old butchers to contact me via email. lyn.hedgecock@gmail.com

Many thanks.

Self Storage 20ft x 8ft



New containers,
Secure yard
Easy In/Out Terms

Rent
Me



£100 per calendar month

TEL: 07850 834782



Dave Parker Services
Capel-le-Ferne

The Capel Ramblers



Visit our website

www.capelramblers.co.uk

Greenview

Music & Movement

Mini Forest School

Languages

Baby Signing

Yoga

Dance

Baby Unit & Nursery
(3 Months+)

Free early years education & 15-30 hour childcare placements available.

Come and see why we're different!
Visit our baby unit during September 2018 for fantastic rates

Contact us 01303 246699 Email office@greenview-nursery.co.uk
Greenview Nursery, The Old School, Capel Street, Capel-le-Ferne, Folkestone, Kent CT18 7EY.
www.greenviewnurserycapel.co.uk



RALPH ALLARD LOCAL CHIMNEY SWEEP

All Chimneys, Boilers & Stoves Swept
Brush and Vacuum

Woodburning Stoves & Fireplaces Fitted
Chimneys Lined. Certificates Issued.

HETAS & NACS registered, fully insured Member of the National
Association of Chimney Sweeps

Tel: 01303 844465. Mob: 07813 716654

Pro Services – Paul Relf Optimum Services

4 Queen's Lea, West Hougham, CT15 7BJ.

Tel: 01304 214166. Mobile: 07787 910961

paulrelf@hotmail.co.uk

Garden & Property Maintenance Services

& Handyman -

No job too small

Fencing, Decking, Pointing, Brick-work repair,
Carpentry, Guttering, Diamond hole drilling,
Pressure washing, Decorating, Kitchen fitting,
Worktop fitting, Shed repair, Concreting, Etc

**PLEASE ENQUIRE FOR ANY
JOBS NOT LISTED**



VietHouse Spa

(Beauty Treatments for ladies
Fully qualified and insured)



Gel & SNS Nails
Pedicure & Manicure
Facial treatment
Indian head massage
Body massage & wax
Eyebrow wax & tint
Eyelash extension, lift & tint
Reflexology

Phone: 07742202924

Email: viethousespa@yahoo.com

Facebook: <https://www.facebook.com/housepa.viet.7>

Address:

Capella House,
New Dover Road, Capel-le-Ferne, CT18 7JJ
(with parking)



CAPEL-LE-FERNE PARISH COUNCIL

FACEBOOK PAGE

FOR UPDATES ON VILLAGE EVENTS AND INFORMATION

<https://www.facebook.com/CapelLeFerneParishCouncil>



If you know someone that does not do Facebook, but would welcome receiving email updates and notifications relating to the Village, between the printed and delivered Grapevine Newsletters, please email clerkcapellefernepc@btinternet.com so they can be added to the Parish Council email database.

NO MEETINGS UNTIL FURTHER NOTICE DUE TO COVID-19

Summary of some items decided under Delegated Powers 2020

Requests from public to address the Council, plus

Surgery and Other Feedback: • Cutting back of hedge top of Capel Street (see page 17).

Traffic Management and Highways: • Response received from Highways England on HGVs on B2011 when Roundhill Tunnels closed for maintenance and repairs (see page 17).

• Virtual meeting to be held with Kent Highways on carrying out traffic surveys and progressing further traffic management.

Planning: • (HLAA/LALP) - Dover District Council Land Allocation Local Plan Consultation – Still waiting Notification for a public consultation date, anticipated to be early part of 2021.

Other Planning: <https://www.dover.gov.uk/Home.aspx>
>Planning>Applications>View-Applications>Decisions

Neighbourhood Watch: • Community Warden and PCSO continue to carry out joint patrols and issue the Parish Councillors with monthly reports, which are circulated for information and can be found on our website.

Playing Field and Equipment: • Refurbishment works carried out to the Skate-park equipment. There are a few things noted from their report to be carried out accordingly. • The Zip-Wire had a replacement stopper tyre fitted, due to a split appearing.

Public Rights of Way and Highways: • Nothing further to report.

Speed Watch: More volunteers required. When the pandemic allows, a public recruitment meeting will be held to invite those interested to attend.

Capel Cares: Volunteers continue to assist villagers requiring shopping, medication collection, transport to appointments, visiting the vulnerable, etc.

Other: • Remembrance Day was attended by a few members of the public and 6 representatives from organisations in Village, who laid wreaths. Thank you everyone who attended and for observing the two minutes silence, as well as social distancing. Thank you to Rev Brian Williams for officiating at the event. Photos available on our website.

Training/workshops/seminars: Available to attend:

- Chairing Virtual Meetings: Skills for Councillors.
- Annual Parish Seminar with KCC Highways.
- Managing and Reducing Stress
- Display Screen Equipment Assessment
- Introduction to Leadership
- Time Management
- Personal Safety
- Health and Safety Essentials
- Freedom of Information Essentials

Due to the COVID-19 Government Regulations currently in place, Councillors voted 5 to 4 in favour of meetings being cancelled until further notice. The Parish Council are continuing to operate by discussing and making decisions remotely, under Delegated Powers given to Chairman, Vice-Chairman and Clerk.

The safety of Parish Council Members and the Public is important to “Control the Virus and Save Lives” and it has been recommended by the National Association of Local Councils (NALC), that we revert to delegated powers decisions and/or consider the use of Zoom online meetings, or something similar, until Covid-19 regulations are relaxed.

When meetings resume, venue and dates, will be arranged and notified accordingly.

A COPY OF MINUTES/DECISIONS/AGENDAS ARE AVAILABLE ON THE PARISH COUNCIL WEBSITE

<https://www.capellefernepc.org.uk/>

ALL PARISH COUNCIL MEETINGS WILL BE OPEN TO THE PUBLIC.

IF YOU WISH TO ATTEND AND ADDRESS THE COUNCILLORS, PLEASE INFORM CLERK.

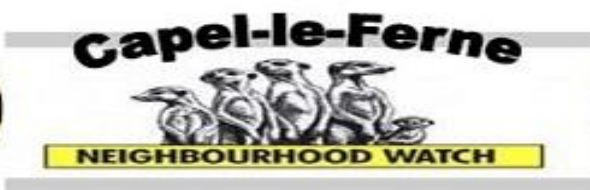
Further information on any of the above or to contact

Parish Council, please write to Parish Clerk,
39 Victoria Road, Capel-le-Ferne
or Tel: 01303 259564.

Email: clerkcapellefernepc@btinternet.com

Is there an issue you wish to discuss with your Parish Council? A Councillor and the Parish Clerk will be available on the 3rd Tuesday of each month 10AM to 12:30PM at The Farmers' Market in Room 001, adjacent to Entrance Capel-le-Ferne Village Hall, Lancaster Avenue, Capel-le-Ferne, CT18 7LX

Due to social distancing, NO SURGERIES at The Farmers' Market until further notice



BE AWARE and STAY ALERT

ActionFraud
National Fraud & Cyber Crime Reporting Centre
0300 123 2040

If you need to contact Kent Police and you are not in an emergency situation – please click before you call.

www.kent.police.uk/contact-us

Or report online via www.kent.police.uk/ro/report

This Christmas more of us than ever before will be shopping online for our presents. Attached is a useful guide to provide helpful tips on how to avoid being a victim of online fraud whilst online shopping. https://assets.neighbourhoodalert.co.uk/images/site_images/68105_Safe_Online_Christmas_Shopping.pdf We hope this is useful - for more useful tips on staying safe online simply visit getsafeonline.org

HMRC ... SCAM EMAILS & TELEPHONE CALLS/TEXT

To help our investigations, report all HMRC related phishing emails and bogus text messages to us. Even if you get the same or similar phishing email or text message often, email it to phishing@hmrc.gov.uk and then delete it. Do not open attachments or click any links in an email or text message, as they may contain malicious software or direct you to a bogus website.

<https://www.gov.uk/.../phishing-emails-and-bogus-contact...>

For advice and to report issues to **KCC Trading Standards** contact

Citizens Advice consumer helpline

on 0808 223 1133

Consumer Advice scams action line

on 0808 250 5050

Monday to Friday from 9am to 5pm.

Whoever you are, there is no excuse for domestic abuse. Help is available and you can report it. We're here if you need our help.

#COVID19

Kent Police

If you have been a victim of domestic abuse or know someone who has, you can report it.

You might not want to talk to the police and that's okay. There is a network of people who are here to help you. Visit: <http://www.kent.police.uk/.../no-excuse-for-domestic-abuse/>

for more information. [#KentTogether](https://twitter.com/KentTogether)



MISSING



TEDDY

Male French Bulldog Fawn (Age: Adult)

Missing from Old Dover road Capel folkstone near Capel court campsite and little satmar Capel campsite, CT17 area on Friday, 30th October 2020

He was chasing a fox with r other dog olive came back but teddy did not

CONTACT: 07752048093 or 07907422854

Help us find TEDDY - print this poster from <https://www.doglost.co.uk/poster.php?dogId=161710>

0844 800 3220

Doglost is a FREE SERVICE run by volunteers
www.doglost.co.uk
Reuniting Dogs with their Owners

Dover Fast Track, Rapid Bus Transport System

The Government is overhauling its planning algorithm used to determine where a swathe of new homes will be built across England. The formula used to produce targets for each area is reportedly being "rebalanced" to focus on building homes in urban areas.

Former Prime Minister Theresa May was among high profile critics of the algorithm, claiming it threatened the Government's 'levelling up' agenda and would lead to more investment in London and the South East. Hopefully, this will mean that my argument to build more houses on brownfield urban sites in the Midlands and the North, rather than continually eating into our ever decreasing rural areas will hopefully lead DDC to have a rethink regarding their unrealistic strategy of intending to build thousands of new houses in Whitfield, when Dover and the surrounding areas do not have the number of jobs to cater for such an increase in population.

All this increase in house build will do, is create more traffic on our roads, increase pressures on policing, more pressure on the NHS, more pressure on waste disposal, more pressures on our fresh water and sanitation systems and more pressure on the Department for Work and Pensions when there will be more people chasing fewer jobs.

This will put greater stresses on our already local overstretched infrastructures. Dover District Council needs to be looking at investing for the future by improving upon the facilities that are present and not try fitting a pint pot into a quart.

As a result the government department, Housing England is giving Dover District Council £16 million to build a Dover Rapid Bus Transport System. The idea is to take shoppers and commuters from villages north of the A2 down to the rail station and shoppers to the shops quicker than they reckon could be done currently on a bus by saving up to 10 minutes on journey time.

The Rapid Bus Scheme is to be put in place ready to accept the occupants of thousands of new houses expected to be built in Whitfield. Whilst the government is offering £16million it will cost closer to £40million to build, that £24 million Dover District Council is contributing could put to better use improving the town centre.

If the government is changing the housing algorithm to take housing development away from the South East to favour where it is rightfully needed in the Midlands and the North, then DDC does not need the Rapid Bus Transport System and should be considering investing money into the town centre. Stagecoach can not run full busses currently and runs their business relying on subsidies (tax payers money)from KCC to run these routes via Whitfield. Will getting to the shops 10 minutes quicker want to make you take a bus, then having to lug back a heavy weeks worth of groceries on a bus, when you can shop on line or go by car which will be cheaper too over the bus fare?

Why go to Dover Priory rail station when Temple Ewell or Martin Mill rail stations are closer from north of the A2 road?

A Customs Transit lorry park at Whitfield

Is projected to be built by the Tory Government at the rear of the B&Q site on the White Cliffs Enterprise park Whitfield. The lorry park will be roughly two and a half times larger than the entire current business park stretching from B&Q right to Whitfield roundabout. Natalie Elphicke your local MP states she wants to keep the roads around Dover clear as we transit from the EU. This lorry park is simply not going to do that. I have tried contacting the Under Secretary for Transport Rachel Maclean to object and request answers to certain questions such as, will this house freight from Euro tunnel as well ?

After a chase up email she steadfastly refuses to reply to my emails. That can mean one thing. Yes, the site will be accepting Euro Tunnel freight, but clearly she does not want to deny this.

Our main roads and rural lanes will become grid locked as we have experienced before, as foreign lorry drivers try to take short cuts across the country side relying on a " car sat nav" system not intended for HGVs, so no advance height or weight restrictions advised or unsuitable routes for HGVs.

Our area will be damaged by these HGVs unless you can try to stop it now, by emailing

the Under Transport Minister Rachel Maclean on rachel.maclean@dft.gov.uk

and your local MP Natalie Elphicke on email address natalie.elphicke.mp@parliament.uk

not forgetting the leader of Dover District Council Cllr Trevor Bartlett on

Cllr-Trevor.Bartlett@DOVER.GOV.UK.

I would be appreciative if you would be so kind as to copy me into your emails to Rachel Maclean, Natalie Elphicke and Trevor Bartlett to ensure you receive replies to your objections.

Geoff.Lymer@kent.gov.uk

I intend to monitor whether all of you receive replies, to take me into my next fight to care for our community.

Finally, you will be told this will create 160 new jobs. That is not accurate, for currently HM Customs operate a Custom Handling Import and Export Facility, employing a similar number of staff. That will be closed down and thus the staff working under that heading appear to lose their jobs. But the new proposed lorry transit centre at Whitfield will be called the Customs Declaration System. So basically just a change of name for a revised operating system, employing a similar number of staff who will be more than likely transferred from the old to the new system. So in reality there will be a change of employment title, but not any new jobs created. So please do not accept this argument being suggested by your MP.

The roads around Dover will be blocked by HGVs accessing routes they should not be accessing.

The Tory government received a bloody nose when they tried to impose this freight park on Stanford and they lost. This time the Tory government is appearing to be devious by only informing literally a handful of people whom they believe their properties may be affected by this development.

They and Dover District Council are not publicising the facts to the wider Dover Community and the government will be using a Special Development Order to bulldoze their way bypassing the scrutiny of the local planning office to have the work started in building the site by January 2021.

This is not a democratic process and I urge as many of you as possible to write in objecting. I believe the Under Transport Minister is purposely not replying to correspondence in order to bulldoze over the local communities, but, this may actually help my case for in numbers we may be able to achieve having our voices listened to by way of a judicial review. This is your home, your environment, your town, your peace and tranquility and I intend that you continue to all enjoy those reasons why you reside here. Together we must fight this undemocratic process.

Geoffrey Lymer,
Kent County Councillor, Dover West Ward

kent.gov.uk
for Kent County Council
information and services



Smart Cleaning

For All Your Cleaning Needs

- **Windows**
- **Carpets**
- **Gutter clearing/repairing**
- **Fascias and lastics**
- **Commercial & Domestic**
- **Offices**
- **Jet washing patios/decking**

Please call or email to book
or for a quote:

Landline: 01303 778257

Mobile: 0777 584 8809

Email:

smartcleaning1313@gmail.com



CAPEL-LE-FERNE PRESCHOOL

Serving the community since 1968

THE VILLAGE HALL LANCASTER AVENUE
CAPEL-LE-FERNE FOLKESTONE, KENT
CT18 7LX

Email: capelpreschool@btinternet.com
OFSTED No: EY306428

OPEN

MONDAY 0800 – 1300hrs
WEDNESDAY 0800 – 1300hrs
THURSDAY 0800 – 1500hrs
FRIDAY 0800 – 1300hrs
(Term time only)

Registered to offer up to 15 hours Free Childcare & Education
For all eligible 2, 3 and 4 year olds




Capel-le-Ferne Primary School
Walking Bus Stop Drop off point
Mon, Wed, Thur, Fri from 0800hrs
£2.00 (Inc. Breakfast)

Want to know more? Just knock on the door
Pop in for a look, no need to book
Can't make it to the hall? Just give us a call

TELEPHONE 07977838609

MESSAGE FROM SIMON, VILLAGE POSTIE ... Hi village, good news.

I have help over the Christmas period which should give you all a better service.

I have a new person (who I took around today). If you see him his name is Jason (I know what your thinking 🤔). He's a nice guy but a little intimidating looking (think big guy, big beard, tattoos on face kind of stuff) but genuinely a big friendly bear 🐻.

I will be changing the delivery route slightly as at this time of year it's not practical to let a guy deliver parcels in an area he doesn't know to people he doesn't know either.

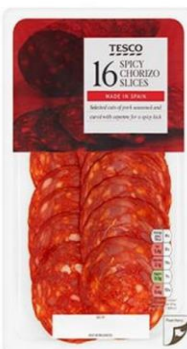
Please rest assured we will both be in the village to complete our delivery (including everything, parcels, letters etc.) right the way through until Christmas. I've told him we don't go anywhere until everything is delivered.

If, as a few people have any concerns, please do not hesitate to speak to me or message me via F/B.

Thanks for reading this lengthy post and if you could also tell the people who don't use social media, I would be extremely grateful. Many thanks, Si

PRODUCT RECALL

<https://www.food.gov.uk/news-alerts/alert/fsa-prin-56-2020>



Tesco recalls Tesco 16 Spicy Chorizo Slices due to contamination with *Listeria monocytogenes*

Pack size: 80g

Best before: 19 December 2020

If you have bought this product, do not consume. Return it into store for a full refund.

Public Protection - Kent

PRODUCT ALERT Tesco has recalled 16 Spicy Chorizo Slices (80g) because the product contains *Listeria monocytogenes*. Symptoms caused by this may be similar to the flu, including high temperature, muscle ache or pains, chills, feeling or being sick.

If you have bought this product, do not consume. Instead return this item to your nearest Tesco store for a full refund. For more information, visit [#ProductRecall](https://bit.ly/2ISqR0W)

REPORT SUSPICIOUS ACTIVITY

Call 999 if:

- * a serious offence is in progress or has just been committed
- * someone is in immediate danger or harm
- * property is in danger of being damaged
- * a serious disruption to the public is likely

Call 101 for non-emergency enquiries.

Or online <https://www.kent.police.uk/contact/af/contact-us/>

Tai Chi

Relax and get fit!

Thursdays, 6 – 7 PM
Capel-le-Ferne Village Hall

For details contact

Anna Dashwood

01304 205 405 / 07736 849 194

www.pfstaichi.com



**THE ACCOUNTS and AUDIT
FOR 2019-2020 of CAPEL-LE-
FERNE PARISH COUNCIL
ARE NOW CONCLUDED.**

Following link to view:

<https://www.capellefernepc.org.uk/council-accounts/>

This includes copies of:

*** CERTIFIED ANNUAL
GOVERNANCE &
ACCOUNTABILITY RETURN
(Sections 1 & 2)**

*** CERTIFIED ANNUAL
GOVERNANCE &
ACCOUNTABILITY RETURN
(Section 3)**

Stephen Huxtable Garden Services

- Private and commercial garden and grounds maintenance
- Grass cutting, Hedge cutting, Garden clearance, Turfing,
- High quality fencing supplied and erected

Free estimates

01303 891720

www.shgardenservices.co.uk

STOP LOAN SHARKS
Intervention · Support · Education
Download Stop Loan Sharks App



Did you know you can now report loan sharks and access support at the touch of a button? 📱
Download the Stop Loan Sharks App for free from the App Store and Google Play here 🖱️ bit.ly/2FW28rn or scan the QR code!

**NEED TO REPORT A LOAN SHARK?
GET HELP AT THE TOUCH OF A BUTTON**

Capel Le Ferne Parish Council

Notice of conclusion of audit

Annual Governance & Accountability Return for the year ended 31 March 2020

Sections 20(2) and 25 of the Local Audit and Accountability Act 2014

Accounts and Audit Regulations 2015 (SI 2015/234)

Accounts and Audit (Coronavirus) (Amendment) Regulations 2020 (SI 2020/404)

		Notes
1.	The audit of accounts for Capel Le Ferne Parish Council for the year ended 31 March 2020 has been completed and the accounts have been published.	This notice and Sections 1, 2 & 3 of the AGAR must be published by 30 November. This must include publication on the smaller authority's website. The smaller authority must decide how long to publish the Notice for; the AGAR and external auditor report must be publicly available for 5 years.
2.	The Annual Governance & Accountability Return is available for inspection by any local government elector of the area of Capel Le Ferne Parish Council on application to:	(a) Insert the name, position and address of the person to whom local government electors should apply to inspect the AGAR
(a)	Maureen Leppard - Parish Council Clerk and Responsible Finance Officer 39 Victoria Road, Capel-le-Ferne, Folkestone, Kent. CT18 7LT	(b) Insert the hours during which inspection rights may be exercised
(b)	9:00 hours to 17:00 hours	(c) Insert a reasonable sum for copying costs
3.	Copies will be provided to any person on payment of £2.00 (c) for each copy of the Annual Governance & Accountability Return.	(d) Insert the name and position of person placing the notice
Announcement made by: (d) Anthony Lake - Chairman		(e) Insert the date of placing of the notice
Date of announcement: (e) 17th November 2020		



You will now be eligible for testing if you have Symptoms, which include:

- A high temperature
- A new continuous cough
- Change or loss of smell or taste



To book a test visit <https://www.nhs.uk/coronavirus>

Here is the direct link for booking a test. <https://www.nhs.uk/ask-for-a-coronavirus-test>

For home kits you will need to provide ID and have a UK Gov gateway account (some people don't)

For site tests (including drive through) you will receive a text message with a code and a link (normally from "COVIDTest"). You will need to enter the code on the link to book your slot.



Press Release

SHARE

[Applications Open for New Covid-19 Business Grant Schemes](https://www.dover.gov.uk/News/Press-Releases/2020/Applications-Open-for-New-Covid-19-Business-Grant-Schemes.aspx)

20-11-2020 03:28 PM GMT

Businesses across the Dover district impacted by the latest lockdown can apply to DDC for a new round of government support grants.

Link for more information

<https://www.dover.gov.uk/News/Press-Releases/2020/Applications-Open-for-New-Covid-19-Business-Grant-Schemes.aspx>

HOW TO GET INVOLVED

Volunteer for one of the many fantastic voluntary organisations in Kent and Medway

Knock on the door to deliver Christmas cards, rather than just posting through the letterbox

Bake a cake or make up an extra plate of food

Pass on magazines or books

Simply knock on a door to show a familiar face

Offer to pick up some shopping or drop off a frozen meal

Pop a note through their door with your contact number or details of other local support, activities and helplines*



Keep rooms well-ventilated. Open doors and windows for fifteen minutes twice a day to freshen the air.

HM Government

NHS

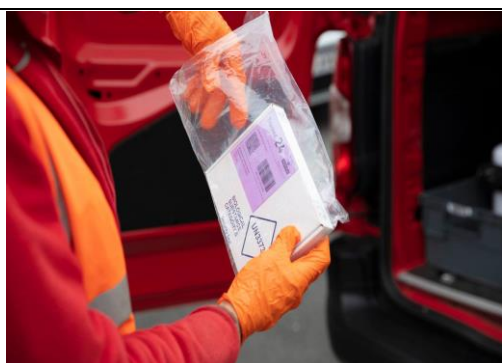
REMEMBER TO LET FRESH AIR IN

Most coronavirus cases are transmitted indoors

Latest Funding Opportunities Newsletter! The Kent Community Foundation COVID-19 Fund continues to support organisations and groups as they adapt to new ways of delivering services and help people. You can apply for grants of up to £7,500, but it is anticipated that most awards will be for less than that as the fund aims to support as many organisations as possible, to reach the widest number of beneficiaries. Link to more information.

<https://www.capellefernepc.org.uk/wp-content/uploads/2020/11/Kent-Community-Foundation-COVID.pdf>

CORONAVIRUS (COVID-19)
For links to national and local information



Royal Mail

We are introducing a weekend extension for over 15,000 existing priority postboxes* from 21 November to help speed up testing.

Collections will now be made from these priority postboxes on a Sunday. Health and Social Care Secretary, Matt Hancock said: "I want to thank the Royal Mail, who, from this weekend, will empty some of their post boxes seven days a week to speed up home testing. "It is a big team effort and I am very grateful for our posties for playing their part to help keep people safe."

CAPEL-LE-FERNE PRIORITY POSTBOX IS OUTSIDE THE VILLAGE HALL, LANCASTER AVENUE, CT18 7LX.



Are you living in a cold home? Are you struggling to pay for your energy bills?

If so, several different funding opportunities are currently available.

Dover District Council has funding to help residents who live in privately owned/ privately rented properties and who are in receipt of benefits, or on a low income with someone living in the household that suffers from a health condition who is adversely impacted by living in a cold home.



The measures on offer are loft, cavity and external wall insulation, connection to mains gas (properties within 23 metres of gas main) and first-time gas central heating system, air source heat pumps.

The Council's website has further details,

<https://www.dover.gov.uk/Environment/Energy-Advice/Grant-Schemes.aspx>.

For application forms email Amanda.martin@dover.gov.uk or telephone 01304 872128.

The Government **Green Home Grant** offers funding primarily for low carbon heating and insulation is also open for applications. More information can be found on the Simple Energy Advice Website,

<https://www.simpleenergyadvice.org.uk/pages/green-homes-grant>, or telephone 0800 444202.

The above funding streams are time limited, therefore early application is encouraged.

The Council also operates a collective energy switching scheme, **Energy Deal** – an easy, supported and no obligation way of checking whether you can obtain a cheaper energy tariff. Auctions are held 3 times a year -

February, May and October. Registration opens again on 1 December 2020. Register online at

<https://www.dover.gov.uk/Environment/Energy-Advice/Cut-Energy-Bills.aspx>, or leave your contact details on 01304 872428 to receive a call-back.



Energy Deal
SWITCH together
to save £s on your bill



Capel Short Mat Bowls News

Contacts

Barry.....257157 Wendy.....259120

Ros.....255862

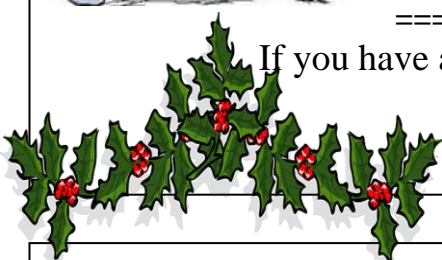


=====

If you have any concerns you can email me on snacks1134@aol.com

Or phone any of the committee members.

Barry Mansfield (Chairman)



The County Council as minerals and waste planning authority is currently undertaking public consultations on an updated

* * Statement of Community Involvement and an updated

* * Safeguarding Supplementary Planning Document.

Statement of Community Involvement (SCI)

The SCI sets out how the Council will engage communities and other stakeholders on its preparation of minerals and waste planning policy and planning applications determined by the County Council and how local communities can engage and contribute to those planning decisions and the formulation of minerals and waste planning policy across the county.

This consultation can be viewed at:

https://consult.kent.gov.uk/.../statement_of_community...

The consultation period for the SCI runs from Friday 20 November 2020 – Friday 15 January 2021 at midnight.

Safeguarding Supplementary Planning Document (SPD)

The revised SPD has been prepared to fulfil a commitment given by the County Council to provide further clarification on the implementation of adopted safeguarding policies in an updated SPD. This commitment was made in response to representations made during the recent 'Early Partial Review' of the Kent Minerals and Waste Local Plan.

This consultation can be viewed at:

<https://consult.kent.gov.uk/.../safeguarding...>

The consultation period for the SPD runs from Friday 20 November 2020 – Wednesday 23 December 2021 at midnight.

Should you have any queries then please contact a member of the team on 03000 422370.



Thank you for emailing the Highways England Customer Contact Centre on 12 November 2020 about diversion signage for the ongoing works for the Round Hill Tunnel on the A20.

I'm sorry to hear of the disruption to the peace and quiet of residents of Capel-le-Ferne since the area has seen an increase in traffic whilst closures for works at the Round Hill Tunnel have been in effect. I do understand that these disturbances are unwelcome.

Capel-le-Ferne is not part of our diversion route whilst closures of the A20 are in place, however, as you've suggested, signs are not being seen or, in many cases, ignored. We have listened to the feedback from yourself and other concerned residents and, during the past week, we have provided additional signage and repositioned many of the initial diversion signs for these closures to assist with discouraging motorists from using unsuitable routes.

I hope the local community has noticed an improvement to the situation as a result.

Furthermore, you will no doubt be pleased to know that the Round Hill tunnel are expected to end on Monday 23 November. Please note that the timing of our works is subject to change due to circumstances beyond our control. Thank you again for contacting us. If you require any further information, please contact the Highways England Customer Contact Centre. They're available 24 hours a day by phone: 0300 123 5000 or by email info@highwaysengland.co.uk or visit the Highways England website at www.highwaysengland.co.uk.

Kind regards, Greg Davis, Senior Administrator



If residents feel strongly enough about the B2011 road use during A20 diversions through our lovely village, they could use the Highways England email address below, to make their concerns known.

The more that make their views known, as the Parish Council have and will continue to do, the more likely something will happen.

Email addresses: (Contractor working for Highways England)

area4enquiries@aone.uk.com and
info@highwaysengland.co.uk

or visit the Highways England website (Contact us) at www.highwaysengland.co.uk.

Please note, for information and following comments on being overgrown and blocking footpath. The very large hedge on New Dover Road, junction with Capel Street, is to be cut back considerably to the following specifications:

- > Cut back Hedge to at least 1ft from pathway
- > Reduce the Hedge to 5ft in height
- > Reduce the Hedge to 5ft in depth
- > Removal from site the detached hedgerow

This will be carried out when convenient to our contractors, but before Spring and birds nesting.





Air Ambulance
Kent Surrey Sussex



Here at the Air Ambulance Kent Surrey Sussex, we have been working on an exciting alternative to our talks offering to groups throughout the year. We love to get out into the community and talk to people about how we work, innovate and save lives, but sadly this year has been very different. We are delighted to say that we have been able to continue spreading awareness virtually, joining members of groups in their Zoom and Team meetings. We would greatly appreciate your support to help spread the word.

Along with this we appreciate that Christmas might not be the same this year, with restrictions limiting our chances of parties or drinks with colleagues and friends, so here KSS we have been coming up with some new ideas to spread some festive cheer like our virtual party pack and Christmas event.

Here at Air Ambulance Kent Surrey Sussex, we strive to save lives by providing the best possible care every minute of the day, every day of the year. Being the UK's busiest and one of the world's leading 24/7 Helicopter Emergency Medical Services, at the forefront of utilising technology and innovation to save lives and improve patient outcomes. Last year alone, we were called out to help over 2,500 people in life threatening conditions. During the pandemic, we have not dropped a shift and have continued to serve our region 24/7 to those most in need, along with supporting the NHS at this time.

In mid-April, we launched our Coronavirus Emergency Appeal as an urgent appeal for support. We faced an anticipated shortfall of £2.p million pounds, which was a projected loss of fundraising income due to the pandemic. Thanks to our fantastic supporters they have helped reduce that shortfall but we are still facing a significant deficit, and your help during this time is needed now more than ever.

We would be so grateful if you could help us spread the word about our virtual talks.

Book a free talk about our life-saving work

Would you like one of our volunteer speakers to join you on your group or club's video call or meeting*? If you are a member of a local group, club or society, then you can book a talk with us - free of charge.

Our volunteer will talk about how we work, innovate and save lives. It promises to be an interesting and inspiring meeting for your members, whilst enabling us to raise vital awareness of our charity and hear how you and your members could get involved in supporting us.

If you would like to hear more about us, then we would love to hear from you. Get in touch now to book a talk at a time and place that suits you.

01634 471 900. talks@aaakss.org.uk

*All in person talks will adhere to government guidelines. Please note that our presentation is only suitable for audience members over the age of 16.

Christmas Appeal.

We appreciate that Christmas might not be the same this year, with restrictions limiting our chances of parties and drinks with colleagues and friends, so why not spread the festive cheer with some KSS ideas:

- **Brew with the (Christmas) Crew – Join us virtually at 6:30pm on the 15th December. Register for your invite below.**
- **Why not give your virtual Christmas get together a KSS twist and download our fun party pack.**
- **Or simply donate to our Christmas appeal to help our life-saving work.**

For more information on our festive activities:

Call: 01634 471 944.

E-Mail: community@aaakss.org.uk

Visit: www.aakss.org.uk/christmas-with-kss/



Air Ambulance
Kent Surrey Sussex

BOOK A TALK

We can offer virtual or in person talks which will adhere to government guidance.

- ◆ Invite us to join your group or club's video call, and help raise awareness
- ◆ Hear real life stories about the people we've helped
- ◆ Learn about the independent life-saving work of our charity that serves Kent Surrey and Sussex 24 hours a day
- ◆ Hear how you and your members could get involved in supporting us, from volunteering to various fundraising activities

BOOK YOUR FREE TALK TODAY
Email: talks@aaakss.org.uk | Call: 01634 471 900



Air Ambulance
Kent Surrey Sussex

Christmas with KSS

You keep us flying high

Christmas will not be the same this year, but at KSS we have been working hard to put some sparkle back into your festive season.

- ◆ Brew with the (Christmas) Crew – Join us virtually at 6.30pm on the 15th December. Register for your invite below
- ◆ Why not give your virtual Christmas get together a KSS twist and download our fun party pack
- ◆ Or simply donate to our Christmas appeal to help our life-saving work

CORONAVIRUS EMERGENCY APPEAL

Please help us to support the NHS and our communities

Christmas Appeal





FOR MORE INFORMATION ON OUR FESTIVE ACTIVITIES
Visit: www.aakss.org.uk/christmas-with-kss/ Call: 01634 471 900

Kent, Surrey & Sussex Air Ambulance Trust, Air Ambulance Building, Rochester City Airport, Maidstone Road, Chatham, Kent ME5 9SD • Charity no. 1021367 • A company limited by guarantee • Registered in England and Wales • Company no. 2803242

USEFUL CONTACTS INCLUDING ACTIVITIES & CLUBS	CONTACT NAMES	TELEPHONE NUMBER
Police Community Safety Officers	Megan Keehner	Kent Police 101
Community Warden	Janice Henry	07811271303 Email: janice.henry@kent.gov.uk
Parish Council Chair	Anthony Lake	01303 489544
Parish Council Clerk	Maureen Leppard	01303 259564 Email: clerkcapellefernepc@btinternet.com
Village Hall Webmaster/Chairperson	Sally Cook	253838 / 07730475838
Village Hall Maintenance	Brian Wilson	627172/07916258684
Village Hall Committee Secretary	Alison Cloake	alison.cloake2@btopenworld.com
Village Hall Committee Lettings	Sue Leaning (email preferred)	07939 095880 Email: fredandsueleaning@yahoo.co.uk
Village Hall Farmers' Market	Debbie Ovenden	07427 626754
Village Hall Committee Treasurer	Sarah Leonard	sarahbridgeland74@hotmail.co.uk
Village Hall Committee Trustee	Derek Jeffrey	01303 259842
Village Hall Committee Trustee	Roy Mann	07725943261
Village Hall Committee Trustee	Jerry Watson	07811987254
Village Hall Committee Trustee 100+ Club/Vice Chairperson	Caroline Bunting	Email: c.bunting@btconnect.com 07885 406433
Bridge Club	Bob Jones	01233 756362
Brownies	Register on website	https://www.girlguiding.org.uk/what-we-do/brownies-7-10/
Capel Baptist Church	Pam Barr	01303 489006
Capel Cares	Janet Milliken	01303 257003
Capel Ramblers	Bob Mothersele	01303 250931
Divas Dance	Rebecca Uden	01303 893650
Fit Friends – Pilates	Pam Vivien	01303 244322
Gardeners Association	Vanessa Cook	01303 256106
	Jean Tanton	01303 255982
Household Bill Savers	Phil & Karoline Taylor	01303 246887
Judo	Colin Carrott	01303 211594 / 07917131571
Playgroup	Alison Cloake	07977 838609
Remote Control Car Club	Derek Jeffrey	01303 259842
Short Mat Bowls	Ros Chandler	01303 255862
St Radigunds Church	Rev Brian Williams	01303 243784
St Radigunds Church Hall Events	John Oliver	01303 251403
St Radigunds Church Hall Bookings	Audrey Goaten	01303 244735
St Radigunds Players and Choir	Jerry Spillett	01303 242146
Tai Chi	Anna	01304 205405
Twinning Association	Jerry Spillett	01303 242146
Welcome to Village Letter	Debbie Catling	01303 251525
WI	Caroline Bunting	07885 406433
Youth Club	Simon Withey	07860803767

XMAS COLLECTIONS - NOT GREEN WASTE.

* Collections due
 Friday, 25th December will occur

* Monday, 28th December, Collections due
 Friday, 1st January will occur

Saturday, 2nd January. Normal collections resume
 Monday, 4th January 2021.
<https://secure.dover.gov.uk/streetcollections/>

Recycling/Waste Collection Dates:



Food Waste, Rubbish (Grey lid) & Green Waste

Fridays

4th and 18th, December
 Saturday, 2nd January 2021
 15th and 29th January 2021



Food Waste & Recycling (Blue lid)

Fridays,

11th December
 Monday, 28th December
 8th and 26th January 2021

Shepway Writers Group

Are you interested in creative writing?

Now's your chance to put pen to paper and write short stories, poetry, or even that book you've been meaning to write.

Our informal group meets every month in Folkestone. It's free to join, so why not come along and give it a go?

Contact Graham on 01303 470229 or 07722 560702.



KNIT & NATTER, REECE ADAMS HOUSE, CAULDHAM CLOSE.
 Crochet is on the agenda for beginners.

Or if crochet is your passion, maybe you could help teach others.

We make a grand cup of tea. No charge.

EVERY THURSDAY, 2pm till 4pm. Everyone Welcome!
 For more information contact Maggie 01303 245046.

CAPEL-LE-FERNE WILDLIFE FACEBOOK PAGE SEARCH

Capel-Le-Ferne Wildlife
 AND JOIN OTHER RESIDENTS DISCUSSING ALL THE WILDLIFE IN OUR VILLAGE

SIGHTLOSS GROUP:

The Folkestone Macular Society Support Group meets on the last Friday each month from 10:30am to noon at The View Hotel, 30-32 Clifton Rd, Folkestone CT20 2EF. All welcome. Meeting other people with macular disease helps you understand your condition, share information about treatments and stay independent. For more information call Margaret on 01303 226 877 or email: help@macularsociety.org



Computer Problems Solved

Tel: 01303 241325 Mob: 07968 129902

Approx **£45**

*Computers, laptops, tablets, smart phones and TVs, PCs set up & supplied.

*PC setup includes Internet, Email, Security, Video calling, Office Programs, data transfer

* Data recovery *Internet connection problems

*Web sites built & hosted from £10 per month.

*Tuition available by a qualified tutor

Ring Tony for a fast and friendly service

See **www.computers-in-kent.co.uk** for details



CAPEL VEHICLE SERVICES

All makes of cars serviced and repaired.

MOT's & repairs, mechanical and welding.

Tyres, Exhausts, Batteries Supplied & Fitted

Competitive rates. No VAT.

Friendly efficient service

Call John Horne 01303 255894

Local free collection and delivery available if required

Jessica Young,
T/A Young's Accountancy Services
MAAT, Accountancy, Book-keeping,
Payroll and VAT services



For small businesses and sole traders

Free initial consultation. Flexible hours

Contact details:

Mob: 07561 112178. Tel: 01303 259734

Email: contactyoungstoday@gmail.com

CREATING QUALITY FOR OVER 40 YEARS

- All types of paving (driveways, patios, pathways)
- Full driveway & dropped kerb packages
- Bricklaying & retaining walls
- Resin-bonded gravel
- Tarmac & concrete
- Dropped kerbs

CONTACT US FOR A FREE ESTIMATE

T: 01303 253437 / M: 07788 146673

capelgroundworks@btinternet.com

www.capelgroundworks.co.uk

Local Council Approved Contractors



Absolute Security

LOCKSMITHS

Opening hours: Mon-Fri, 9am – 6pm

Saturday, 9.30am – 1.30pm

No call out charge – 24 hours, 7 days

All types of locks, open-supplied-fitted

Boarding Service - Emergency Repairs.

Key Cutting. Domestic & Commercial.

Shutters, Grilles, Bars, Safes.

01303 210057 / 07938599863



FITTING CREATIONS

BLINDS – CURTAINS – SHUTTERS



Friendly Family Business

Local to you

01303 894882 07506 144427

www.fittingcreations.com

info@fittingcreations.com

G B Haworth



Painter & Decorator

Interior & Exterior

Free Estimates Capel - 244206

Simpson Aerials

Your local aerial installer

We install, repair and tune all TV and Radio

Aerials and Satellite, including Freeview, Freeview

Plus, Freesat and Freesat plus. Est: 1988



Call Peter on

07971807150



MOT Testing
Station

MOT's

- Cars
- Bikes
- Vans
- Quads

Capel Garage

30 Old Dover Road,
Capel-Le-Ferne

Tel: 01303 254282



SERVICING

- Repairs
- Exhausts
- Tyres
- Batteries

NO JANUARY ISSUE Items for February 2021 issue to be with
Maureen Leppard (Editor) at 39 Victoria Road, Capel-le-Ferne CT18 7LT,
(Tel: 01303 259564) or Email: clerkcapellefernepc@btinternet.com
by 6pm, Sunday, 17th January 2021.
PLEASE NOTE IT IS EDITOR'S DECISION ON FINAL CONTENT

