

GRAPEVINE

Capel-le-Ferne Village Newsletter

AUGUST 2020 - ISSUE NO: 295

IT IS EDITOR'S DECISION ON FINAL CONTENT

THIS IS AN ONLINE ISSUE ONLY

We do understand that some people do not have access online. Cherry who organises the delivery has resigned her volunteer services and we are in the position of sorting out a replacement. Thanks are expressed to Cherry for her services in organising delivery of the Newsletter, since conception, many years ago.

It was only decided at our PC meeting, when our Chairman, Mr Tony Lake, agreed to take over the task of sorting the printed version and getting to deliverers. Time is now required to organise this handover, hence the delay. Hopefully, the September one will be delivered door to door.

Capel Village Hall Management Committee

Capel-le-Ferne Garage Safari
takes place on
Sunday, 6th September
between 8am and 2pm

Now's the time to sell all those treasured
items you've been keeping in the attic!
Or the shed!

To book a stall please contact
Cherry Leppard
on 01303 255114

Maps with details of stalls can be picked
up on the day from the hall.

**Note: all social distancing legislation and
guidelines must be observed.**

Stallholders and visitors will need to observe social distancing and adhere to existing COVID-19 guidelines and the hall will issue advice to both on these. We will be suggesting that all cash and goods are cleaned and sanitised. All volunteers will be issued with PPE. To book a stall, please contact Cherry Leppard on 01303 255114. Any queries contact Sally Cook on 01303 253838.

"WHAT'S ON" IN CAPEL-LE-FERNE

*If you know details of your event in advance, please let Editor know so
organisations avoid booking same date*

11 th Aug	WI - No Meeting
5 th Sept	Capel Gardeners' Autumn Show @ Village Hall CANCELLED
6 th Sept	GARAGE SAFARI
8 th Sept	WI Meeting - Birthday Meeting - Dance Group
19 th Sep	St Radigunds Church - Snowdown Colliery Welfare Male Voice choir CANCELLED It is hoped to arrange a fresh date in 2021 but it has not yet been agreed.
10 th Oct	Youth Club Quiz Night CANCELLED
13 th Oct	WI Meeting - How to Avoid Being Scammed
10 th Nov	WI Meeting - Annual Meeting
17 th Nov	Capel Gardeners' A G M @ St Radigunds' Church Hall
8 th Dec	WI Meeting - Christmas meeting

Capel le Ferne Village Hall – providing services to the local community

<http://www.capelvillagehall.com> REGISTERED CHARITY No.281786



Something to celebrate? Want to hold a party?

Need to organise a meeting or training session?

Want to start a teatime chat group or a new sports club?

Licenced for most things (except hypnosis and boxing)

including sale of alcohol, PRS, raffles.

To view the hall, or to make a booking contact the letting secretary Sue Leaning

Email: fredandsueleaning@yahoo.co.uk (preferred) - Or on 07939 095880

Since officially opening on July 4th, regular users have begun to come back to the hall. Others have been frustrated by the ban on indoor sports which thankfully lifts on July 25th. The Farmers Market will be open to all stallholders from August 4 and gradually normal service is being resumed – within the rules of COVID-19 legislation and social distancing! At this point I would like to thank Sue Leaning, our Lettings Secretary, who has had to traverse a nightmare of wanting to help people booking in against adhering to the guidelines. All hall hirers are being asked to do a risk assessment and will be sent a copy of the risk assessment done for the hall. This is due for review on 1st August and in light of easing of restrictions, may well change. Copies of these can be obtained from Sue Leaning and Sally Cook.

The Farmers Market will move back into the hall on the 4th August, although some stalls are opting to stay outside. Tea and coffee will be served in disposable cups and limited tables and chairs will be socially distanced. The post office stall will also be back.

RECYCLING - INSIDE THE HALL

Boxes are provided for:

Used Stamps for Donkey Sanctuary and McMillan Cancer. Bottle Tops are also being collected again.

Please place the above in the relevant boxes.

A big thank you to everyone who puts their used stamps in the box in the Village Hall. Please carry on for these good causes.

Capel-le-Ferne History Book

“Village in the Clouds”

Copies still available £5 each from

Cherry: Tel: 01303 255114

100+ CLUB

The new membership for the 100+ Club is now available. Following coming out of lockdown.

Contact C Bunting

c.bunting@btconnect.com

After consultation and with due deliberation, the Village Hall Management Committee has decided to go ahead with the Garage Safari this year. We are aware that some residents have reservations about this but the majority of those who have spoken to us seem to be in favour. Stallholders and visitors will need to observe social distancing and adhere to existing COVID-19 guidelines and the hall will issue advice to both on these. We will be suggesting that all cash and goods are cleaned and sanitised. All volunteers will be issued with PPE. To book a stall, please contact Cherry Leppard on 01303 255114. Any queries contact Sally Cook on 01303 253838.

As with all things, time moves on and things change. Many of our volunteers, to whom we are eternally grateful, have ‘retired’ from the hall and we are in need of people to help out in various things such as the Farmers Market, in the kitchen, traffic marshalling, serving on the committee as trustee, helping with the IT (website, social media etc) etc. It is worth pointing out that no one is employed by the hall. Lettings and cleaning are done on a self-employed basis and everyone else, including all the trustees, do things on a voluntary basis. We have about 20 volunteers who help out on an ad hoc basis from a population of upwards of about 2,500 people. If you are interested in helping out, even for a couple of hours, then please contact the trustees.

Email Sally on eures1994@yahoo.com

Capel Village Hall Management Committee

Capel-le-Ferne Garage Safari
takes place on
Sunday, 6th September
between 8am and 2pm

Now's the time to sell all those treasured
items you've been keeping in the attic!
Or the shed!

To book a stall please contact
Cherry Leppard
on 01303 255114

Maps with details of stalls can be picked
up on the day from the hall.

**Note: all social distancing legislation and
guidelines must be observed.**



CAPEL-LE-FERNE FARMERS MARKET

Community event run by and for the community
Every Tuesday 10 am to 12.00 noon.
Village Hall, Lancaster Avenue, Capel-le-Ferne
Folkestone CT18 7LX



Visit us on Facebook <https://www.facebook.com/groups/Capelfarmersmarket/>

The Farmers Market will move back into the hall on the 4th August, although some stalls are opting to stay outside. Tea and coffee will be served in disposable cups and limited tables and chairs will be socially distanced. The post office stall will also be back.





CHURCH SERVICES, August 2020

Date	Alkham	Capel	Hougham
Sunday 2 nd Trinity 8	Evening Prayer 6.30 pm	Eucharist 9.30 am	Worshipping Together 11am
Sunday 6 th St Laurence			United Parish Eucharist 10.00 am
Sunday 16 th St Radigund		United Parish Eucharist 10.00 am	
Sunday 23 rd Trinity 11	United Parish Eucharist 10.00 am		
Sunday 30 th Trinity 12			United Parish Eucharist 10.00 am



...will be back as soon as we can meet again safely.

Visit our Facebook page - <https://www.facebook.com/BeneficeofACH/> - for our weekly online services.

Visit us online at: www.church-alkham-capel-hougham.org.uk

From the vicarage

Churches can reopen; so there I was, kneeling on the floor. *Training for ministry never covered this*, I told myself. Not that I needed training to use a tape measure to lay strips of masking tape on the floor of a church 2 metres apart.

Being there on my hands and knees brought back a memory from my student days in South London, where I first became involved with the Church. The then Bishop of Southwark lived in the parish and would sometimes invite himself to take part in services at the church where I had become an altar server.

Positioned centrally in the church was a plinth. On this stood a large altar upon which, at the appropriate point in the service, the bread and wine for communion would be placed.

It was at that point on the day in question that the Bishop, flanked on either side by a server, approached the altar. Suddenly, there was a resounding crack. The wooden surround to the plinth gave way beneath his right foot and for a moment Bishop, robes and accompanying accoutrements seemed destined to land in an undignified heap in front of the altar. Miraculously, the servers intervened and somehow retrieved the situation. Then I remembered my own narrow escape at a funeral in a muddy, rain-soaked churchyard. While in full flow, I found myself sliding sideways down the bank that I had been standing on and surprised myself, not to mention the mourners, by somehow staying upright.

I stood up and looked down at the floor. *Memories are strange things - what will people say about me in years to come?* I asked myself. *Do you remember Reverend Brian? How he used to stick masking tape everywhere....?* Brian

PLEASE NOTE ... BOTH ST RADIGUND'S CHURCH AND HALL ARE AVAILABLE FOR LETTING PURPOSES

- Rates £10 per hour (negotiable for block bookings, local residents).
- PA/Sound system available • WiFi available

Booking Policy available from

Audrey Goaten, 32 Albany Road, Capel-le-Ferne. CT18 7LA.

Tel: 01303 244735. Email: tryke@audrey47.plus.com





Capel Short Mat Bowls News

Contacts

Barry.....257157 Wendy.....259120
Ros.....255862

=====



Dear Members,

Sorry but there is still no news as to when we can start bowling again.

But things are changing by the day and I hope it will not be to long before we can get together. If there are any changes, we will notify you by this grapevine or by phone.

In the mean time, if any member is interested in joining us for a game of Petanque on the Petanque court on the green by the Village Hall, please come along on Sunday, at 1:30 pm. Bring your own boules.

If you have any concerns you can email me on snacks1134@aol.com
Or phone any of the committee members.
Barry Mansfield (Chairman)

COMMUNITY SUPPORT



NEIGHBOURS HELPING NEIGHBOURS

A local organisation that aims to support people living in Capel

Staying independent and being part of the community is important to everyone but there are times during our lives when we could benefit from a little help from our neighbours. **CAPELCARES** is a local volunteer organisation run by residents of Capel to support those living in Capel. We can arrange to meet you in your own home to discuss any issues or challenges that you may have. Our volunteers are all local residents who have been DBS checked and have been trained in Safeguarding.

Our volunteers can help you with a variety of issues, including:

- Social visits for those living on their own.
- Home visits to support family carers.
- Assistance with shopping.
- Transport support, i.e. to & from medical appointments etc.
- Small house maintenance/gardening jobs.
- Regular phone contact.
- Helping you make contact with other services.

Referrals can be made by anyone for anyone. Our aim is to help residents in Capel remain safe, secure and independent in their own homes, as well as providing support to residents with unexpected, short term challenges that disrupt routine family life.

NEIGHBOURS HELPING NEIGHBOURS

To find out more or to arrange a visit please contact Jan on 01303 257003

We will continue to hold a regular social coffee morning every month when lock-down guidance is lifted. Details of date, venue and time to be notified when known. Come and join us, meet with your neighbours. Find out more about **CAPELCARES** or just enjoy a cup of tea or coffee (with biscuits).

EVERYONE WELCOME

Volunteer with us

and make a difference to
someone's life



Could you spare a few hours a month to help your neighbour? We are looking for community minded people to join CAPELCARES as we seek to assist those in Capel le Ferne who just need a little help to lead independent lives in their own homes.

Call Jan on **01303 257003** for more details

CAPELCARES "from small acorns, mighty oaks will grow"

WORRIED ABOUT CORONAVIRUS

HELLO! If you, or someone you know, are self-isolating,
can **CAPELCARES** help?



We are: **CAPELCARES**,
local volunteers who are all DBS checked.



You can contact us via Jan on 01303 257003.

If you are self-isolating due to COVID-19 we can help with:

- Collection of shopping.
- Collecting medications.
- Other urgent supplies.
- A friendly phone call.

Coronavirus is contagious.

Please take every precaution to ensure you are spreading only kindness.

"from small acorns, mighty oaks will grow"

Thursdays

Streetz 2 Streetz

WEDDINGS

MOBILE

KIDS PARTIES


**FISH
&
CHIP
UNIT**

**CHRISTENINGS
CHARITY EVENTS
SCHOOL FETES**

**FISH SUPPERS
PARTIES
BOOT FAIRS**

**CALL: 07955 926 835
FOR BOOKINGS & DETAILS**

**Amin Stores
5-7pm**

BRIGHT IDEA

ELECTRICAL SERVICES LTD
Colin Newton
www.brightideaelectrical.com
enquiries@brightideaelectrical.com

T 01303 778366
M 07855 431330


Leppard Maintenance Handyman Service

Repair, Replace or Maintain

Interior and Exterior

 Lawns, Hedges, Fences, Gates, Outbuildings
 Plumbing, Painting, Welding & Woodwork
 Bespoke Fabrication in Timber or Steel

Need Help?

01303 864229 (Eves) text/call 07805 773251

 Email: kevin.leppard@gmail.com
"A reliable chip off the old Block"

CAPEL BAPTIST CHURCH

Capel Baptist Church is still closed
but hope to open in September.



*If there are queries regarding these details,
please call 01303 489006 - Pam Barr
Please! A reminder that the public are requested
not to park in front of the gates on Sunday
mornings as this is a disabled access.*

- CCTV
- Alarms
- Telecoms
- Data
- WiFi



For excellent rates call **JOHN**
Fully qualified ex BT engineer
with 12 years experience.

**John Waller
Kent Cables Ltd**

Mobile: 07766 068100 Tel: No: 01304 225420

Email: kentcables@outlook.com

Website: www.kentcables.co.uk

Half the price of BT OPENREACH GUARANTEED

Partners in IT –

Looking after YOUR technology

Red Boot Tech Services and The Computer Lady provide outstanding IT support. From a single repair or upgrade to a monthly proactive maintenance contract, we support your Home and Business needs for both PC and Mac.

Windows 7 support from Microsoft ended in January 2020. We provide cost-effective upgrades to Windows 10 whilst also improving performance by installing a Solid-State Disk from only £150/computer.

Red Boot
Tech Services

THE COMPUTER LADY
For a fast and reliable service

dave@rbtechservices.co.uk – 07970 804060

alison@thecomputerlady.co.uk – 07802 470675

DONATE TO THE MEMORIAL TRUST



Remembering the Few - at the National Memorial to the Few is sharing a COVID-19 update.

Wow! The response to our Crowdfunder appeal has been remarkable and the Trust is very grateful for the support of so many people.

To date we have been supported by more than 700 people, many leaving heartfelt messages telling us how much they value the work we do to highlight the bravery and sacrifice of the Few. It has been truly humbling to read such kind words and to know that the work we do is valued.

The appeal has so far raised £24,000, which means we have hit our initial target and have made a great start towards our 'stretch target' of £50,000. They are impressive sums, but to continue our work of spreading the story of the Battle of Britain and helping people old and young to understand the events of 1940, we have to keep working towards that stretch target.

Because here is another impressive sum; it costs £240,000 a year to run the site and The Wing - and that's not easy to raise even in a good year. Many people have told us in their comments that they are amazed that we receive no government funding of any kind - but it's true. Like the aircrew of 1940, it's down to us - and now it's down to you.

Please spread word of this appeal to your friends, encourage them to contribute and help us on the way to that stretch target. And thank you, sincerely, for helping us get this far so quickly.

Support the crowdfunder here: <http://ow.ly/qepr50AdWo0>

Visit Kent | Dover District Council

Stay safe and best wishes,

Group Captain Patrick Tootal and the Board of Trustees



**Events at the Battle of Britain Memorial
New Dover Road (B2011), Capel-le-Ferne,
CT18 7JJ. Tel: No: 01303 249292**

For all News from
The Battle of Britain Memorial
Home to the National Memorial to the
Few and The Scramble Experience

Website:

<https://www.battleofbritainmemorial.org/>

Facebook Page:

<https://www.facebook.com/rememberthefew>

COVID-19 update.

In line with the latest guidance from the Government, please note that visitors will need to wear a face covering inside The Wing. We look forward to welcoming you. The Trust has put carefully thought out procedures in place to ensure our staff and volunteers can welcome visitors back to The Wing in confidence. We are sticking to the 2m distancing rules and we asked people to wear face masks before it was compulsory. We would like to stress that masks must now be worn at all times while in The Wing except by those people who are eating and drinking in the Cockpit café. We have also introduced a one-way system, hand sanitisers and other safeguards against the transmission of COVID-19.

Are you looking for a venue to host your next business meeting? Hunting Lodge is the perfect space and offers an airy room to suit all kinds of meetings.



**Newsletter from
the Battle of Britain Memorial
Home to the National Memorial to the Few and
The Scramble Experience**

CLICK FOLLOWING LINK TO VIEW

<https://mailchi.mp/fd57724cc8eb/may-newsletter-2020?e=0c04ee5ac6>



CAPEL-LE-FERNE EVENING WI

Hello Everyone, what a lovely surprise the members had, when delivered to our door on Monday evening was a beautifully handmade box which was full of goodies. We were told not to open the boxes until 2.30pm on the Tuesday afternoon which would have been when we usually met up for the annual garden party meeting, there was supposed to be no peeking but I am sure there might have been more than a few that couldn't resist. So sitting down with a cup of tea and all ready to see what was inside the box, off came the gold ribbon, then opened the lid to reveal the contents of a homemade holder with teabags, coffee and a little packet of biscuits inside it, delving deeper was some handy wipes, a homemade coaster, another packet of different biscuits, a homemade lavender bag and a tube of hand cream. Thank you very much to Pam, Alison and her friend Julie for all your hard work of making and delivering the boxes to the member's homes.

Thinking back to some of the past garden parties we had, one was at Jayne's garden with the marquee full of cakes made by various members there were scones with jam and cream, cheese scones and lots of strawberries alongside the drinks.

We have had two meetings in the past at Suzanne's garden with her fishponds and lovely flowers of all kinds around the garden there were lots of different spaces dotted around with tables and chairs to sit on. There was lots of welcoming bunting and a marquee with drinks, cakes, scones, and jam and cream of course. Suzanne's kind husband Keith showed us around the fruit and vegetable gardens and generously gave us some to take home with us.

Pam has kept us updated with her online letters which have also been passed on to some of the members who don't have computers. The letters not only have news of everything that is going on but also have a quiz to keep the brains from going too rusty, interesting letters from members of their memories of being at school and if members had bought Laura Ashley goods in the past and what memories they had brought back to them.

Unfortunately, Jean has had a fall and fractured her femur and is in hospital, let's hope she has a quick recovery, lots of best wishes to her.

List of WI Monthly Meetings

August	11 th	No Meeting
September	8 th	Birthday Meeting
October	13 th	How to Avoid Being Scammed
November	10 th	Annual Meeting
December	8 th	Christmas meeting




**Save the Date for
SAMPHIRE'S
ANNUAL
GENERAL
MEETING 2020**

24th September, 6PM

Due to the uncertainty caused by the COVID-19 pandemic, we are unsure at present if our AGM can go ahead in person or via an online meeting (Zoom).

In the meantime, we are letting you know the date so you can save it and hopefully join us on the day.

Contact us:
info@samphireproject.org.uk
01304242755



Going to the play park?

- ✓ Wash your hands regularly
- ✓ Keep a safe distance from others
- ✓ Follow the venue's safety advice

Self Storage 20ft x 8ft

New containers,
Secure yard
Easy In/Out Terms

Rent
Me

£100 per calendar month

TEL: 07850 834782



Dave Parker Services
Capel-le-Ferne

The Capel Ramblers



Visit our website

www.capelramblers.co.uk

Greenview

Music & Movement

Mini Forest School

Languages

Baby Signing

Yoga

Dance

Baby Unit & Nursery

(3 Months+)

Free early years education &
15-30 hour childcare placements available.

Come and see why we're different!

Visit our baby unit during September 2018 for fantastic rates

Contact us 01303 246699 Email office@greenview-nursery.co.uk

Greenview Nursery, The Old School, Capel Street, Capel-le-Ferne, Folkestone, Kent CT18 7EY.
www.greenviewnurserycapel.co.uk



RALPH ALLARD LOCAL CHIMNEY SWEEP

All Chimneys, Boilers & Stoves Swept
Brush and Vacuum

Woodburning Stoves & Fireplaces Fitted
Chimneys Lined. Certificates Issued.

HETAS & NACS registered, fully insured Member of the National
Association of Chimney Sweeps

Tel: 01303 844465. Mob: 07813 716654

Pro Services – Paul Relf Optimum Services

4 Queen's Lea, West Hougham, CT15 7BJ.

Tel: 01304 214166. Mobile: 07787 910961

paulrelf@hotmail.co.uk

Garden & Property Maintenance Services

& Handyman -

No job too small

Fencing, Decking, Pointing, Brick-work repair,
Carpentry, Guttering, Diamond hole drilling,
Pressure washing, Decorating, Kitchen fitting,
Worktop fitting, Shed repair, Concreting, Etc.,

**PLEASE ENQUIRE FOR ANY
JOBS NOT LISTED**

VietHouse Spa

(Beauty Treatments for ladies
Fully qualified and insured)



Indian Head massage

Facial & Body treatments

Manicure-Pedicure

Nail Treatments

Waxing & Tinting

Special offer:

PAY ONE GET ONE FREE

For the first treatment

► Phone: 07742202924

Email: viethousespa@yahoo.com

Facebook: <https://www.facebook.com/housespa.viet.7>

Address: Capella House, New Dover Rd, Capel le Ferne, CT18 7JJ
(with parking)



CAPEL-LE-FERNE PARISH COUNCIL
CAPEL-LE-FERNE PARISH COUNCIL FACEBOOK PAGE
FOR UPDATES ON VILLAGE EVENTS AND INFORMATION
<https://www.facebook.com/CapelLeFerneParishCouncil>



If you know someone that does not do Facebook, but would welcome receiving email updates and notifications relating to the Village, and would like to be included in all Parish Council and Neighbourhood Watch notifications, please email clerkcapellefernepc@btinternet.com so they can be added to the Parish Council email database.

Summary of some items discussed at meeting on Tuesday, 21st July 2020

Requests from public to address the Council, plus Surgery and Other Feedback: Communication from resident in George Close was read to members present, on the concerns of speeding on the B2011.

Traffic Management and Highways: • Having exhausted the help from Kent Highways and Kent and Medway Safety Camera Partnership, Councillors will be making cost enquiries, to possibly fund the provision of flashing speed signs to help tackle speeding. • The position of the planters at Winehouse Lane, highlighting the new 40mph zone area, is being questioned with Kent Highways for them to relocate, as they have been placed obstructing sight lines for traffic exiting the junction onto B2011.

Planning: • (HLAA/LALP) - Dover District Council Land Allocation Local Plan Consultation – Waiting Notification for a public consultation date. When known, Councillors to encourage public intervention to write comments to DDC and to attend an exhibition to pass views onto Parish Council.

• The status of all other applications was reported and full details are available on: Dover District Council website: <https://www.dover.gov.uk/Home.aspx>

>Planning>Applications>View-Applications>Decisions

Neighbourhood Watch: • Report received from PCSO on vehicle crime, nuisance vehicles, speeding, abandoned vehicles and camper vans parking on Old Dover Road.

• Public should continue to report incidents via Kent Police on 101 or online.

Playing Field and Equipment: • Report received from Councillor on items of repair and/or refurbishment. • Items noted and under further investigation included replacement bucket swing, repairs to zip-wire, new CCTV cameras, gym equipment inspection, annual RoSPA inspection, temporary Covid-19 regulation signage, 2 new large permanent signs and refurbishment of petanque court.

Public Rights of Way: • Further communication underway with KCC and DDC on the Bridleway and Open Space adjacent to George Close. • Notification on upgrade of PROW - ER218A/ER217/ER219. • Overgrown PROW at Satmar.

Annual Accounts 2019-2020: Circulated to Councillors for approval and agreed accordingly for submission to Audit Commission.

Speed Watch: Sessions will restart when further Covid-19 regulations are relaxed by Kent Police.

Capel Cares: • Now running as an independent organisation. • Sponsorship obtained for Insurance. • Volunteers continue to carry out shopping for residents still in isolation. • New volunteers have been engaged.

Other: • Return to door to door delivery of Grapevine Newsletter. • Garage Safari discussions on VHMC decision to hold event. • Training workshops available. • HM Prison Service Payback Scheme. • Access onto Playing Field.

• Rubbish in front gardens. • Installation of fibre optic cables on poles in Capel Street.

ALL INFORMATION BETWEEN GRAPEVINE NEWSLETTERS IS INCLUDED ON PARISH COUNCIL'S FACEBOOK PAGE or BY NOTIFICATION VIA EMAIL DATABASE.

PLEASE SHARE & PASS ON IF ANY OF YOUR FRIENDS OR FAMILY WISH TO BE INCLUDED IN THE PARISH COUNCIL EMAIL DATABASE TO RECEIVE NOTIFICATIONS, MESSAGES, NEIGHBOURHOOD WATCH INFORMATION, PLANNING APPLICATIONS AND "WHAT'S ON" EVENTS.

CONTACT THE PARISH CLERK

clerkcapellefernepc@btinternet.com

or LIKE COUNCIL'S FACEBOOK PAGE.

<https://www.facebook.com/CapelLeFerneParishCouncil>

Next Parish Council meeting is Tuesday, 18th August, 7.30pm.

Village Hall (Large Hall), Lancaster Avenue, CT18 7LX

A COPY OF MINUTES and MEETING AGENDAS ARE AVAILABLE ON THE PARISH COUNCIL WEBSITE

<https://www.capellefernepc.org.uk/>

ALL PARISH COUNCIL MEETINGS ARE OPEN TO THE PUBLIC. IF YOU WISH TO ATTEND AND ADDRESS THE COUNCILLORS, PLEASE INFORM CLERK.

Further information on any of the above or to contact Parish Council, please write to Parish Clerk,

39 Victoria Road, Capel-le-Ferne or Tel: 01303 259564.

Email: clerkcapellefernepc@btinternet.com

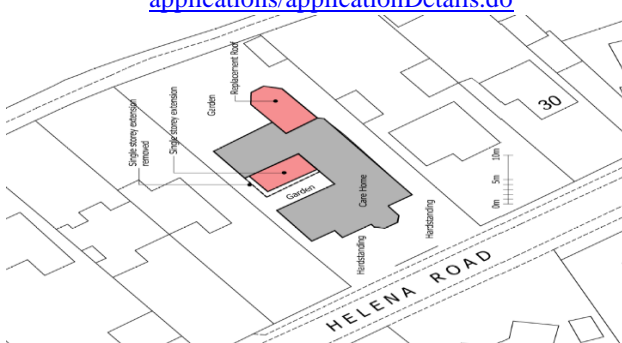
PLANNING APPLICATION

Bracknell House Residential Care, 34 Helena Road, Capel Le Ferne, CT18 7LQ.

20/00732, Erection of a single storey side extension, replacement roof to existing conservatory and alterations to doors and windows (existing single storey front and side extensions and steps to be demolished),

LINK TO READ DOCUMENTS AND MAKE COMMENTS

<https://publicaccess.dover.gov.uk/online-applications/applicationDetails.do>



Hopefully, next session will be Tuesday, 18th August in small hall.

Is there an issue you wish to discuss with your Parish Council? A Councillor and the Parish Clerk will be available on the 3rd Tuesday of each month 10AM to 12:30PM At The Farmers' Market in Room 101, adjacent to Entrance Capel-le-Ferne Village Hall, Lancaster Avenue, Capel-le-Ferne, CT18 7LX

**NEWS FROM THE PLAYING FIELD ... PLEASE SHARE and PASS ON
TO ANYONE WHO USES OUR FIELD and EQUIPMENT.**



**USE OF FIELD REQUEST, FOR SPECIAL ACTIVITIES/LARGE GATHERINGS ON
PUBLIC PLAYING FIELD, LANCASTER AVENUE, CAPEL-LE-FERNE, CT18 7LX**
Please contact the Parish Clerk for permission form. Email: clerkcapellefernepc@btinternet.com

It is lovely to see many enjoying the facilities at our Recreation Field, Lancaster Avenue, Capel-le-Ferne. As we can now continually monitor regularly, by remote WiFi, the activities via our new and additional CCTV high definition cameras on site, we are especially pleased to see many Keep-Fit groups and individuals in the fresh air, making use of our Outdoor Gym Equipment and Children/Youth in the Skate-Park and other areas.

We hope you all enjoy your time at the Recreation Field and politely request that everyone respects the equipment for others to use, as it costs a large portion of Parish Council Precept funds (Residents' Council Tax), to keep it maintained to a high standard.

In the first week of officially opening most of the equipment since relaxation of lock-down regulations, we have monitored CCTV footage and there are a few factors that Councillors have recorded to draw to your attention, especially if you use the area in any way, or please share with those you know that do.

- Please do not remove the information notices. These are there to remind you and others of the Covid-19 government rules still in place.
- The junior play area (swings, climbing frame and roundabout etc.,) are for children up to 12 years of age. Older youths and adults should refrain from using.
- Please resist climbing on top of the teen shelter, multi-use goal ends or swing units. They are fairly high and the Parish Council can not be responsible for injury caused if you fall.
- Please respect the fences and benches, these should not be used as props for exercising, i.e. jumping off/on, or attaching resistant bands. This could weaken the foundations that attach them to the ground surface.
- Please endeavour to close the gates on the Skate-Park and Junior Play Area.

These are just a few items noticed this week whilst observing use. All our equipment is regularly monitored by our trained Councillor. Defected or damaged items are reported and repairs carried out accordingly.

PLEASE FOLLOW THIS SUGGESTED ADVICE FOR SOCIAL DISTANCING:

- Maximum 6 in Skate-Park at any one time
- Maximum of 3 family units in junior play area at any one time
- If it is not possible to distance by 2 metres,

keep a distance of 1 metre + precautions of wearing a face covering and keeping interaction brief

PROTECT YOURSELF and RESPECT OTHERS.

- * Follow the current social distance guidelines when visiting and encourage your children to do the same.
 - * If the playground is busy, consider coming back at a later time.
 - * Talk to your children about this possibility before visiting.
 - * Wash your hands and your children's hands before and after visiting.
- * Take hand sanitiser with you and consider taking a bottle of water, in case children's hands get covered in mud.
 - * Ensure your children are using hand sanitiser frequently.
- * Follow and adhere to all current government advice in addition to the above guidance.

Environmental Crime and an Offence:

Please put your litter in the bins. Please bag and bin dog faeces.
If bins are full, please take your litter home.

The Parish Council appreciate your help to respect the area for your enjoyment and that of others.
If you notice equipment defects, please report to 01303 259564.

THANK-YOU

KCC Director of Public Health response to national media reports re Ashford and Folkestone

As part of our outbreak plans, we work closely with Public Health England to monitor the figures across Kent - the seven day rolling average for Ashford and Folkestone continues to decline from the peak seen in April/May, so this PHE report does not mean there is a current need for any local lockdowns.

While the figure for cumulative confirmed cases will always appear high for these areas, there is no comparison to be made between the rates of new cases currently occurring in Ashford and Folkestone, and areas such as Leicester.

We have seen a number of infections in care settings and these are being effectively managed but we have not seen any evidence of any widespread community transmission of COVID-19 and there are currently no plans to introduce any lockdowns specifically these areas. Should, however, the need arise, we will not hesitate to take further steps should it be necessary.

Ashford and Folkestone have seen higher rates than other areas and is a combination of higher testing rates earlier in the pandemic, a large NHS Trust and many care homes in the area plus the London commuter effect. We have known Ashford has experienced high numbers for a while and as a result we have deployed mobile testing sites to this area to increase the amount of people who are tested to allow us to better understand how and why this is happening.

As a result we are finding more positive results because we know that some people can be infected with Covid-19, but not exhibit symptoms (asymptomatic cases).

The public should be reassured that the levels of testing across the whole of Kent have also been ramped up and we would expect to see a rise in the number of cumulative confirmed cases.

We have increased our testing capacity so that we are able to identify and confirm cases in our community and support the NHS Test and Trace programme. We appeal to residents to follow the guidance should they be contacted by NHS test and trace. This will all help us control the spread of the virus.

The NHS in the region have also been working hard making sure that there is sufficient testing resources for their patients and staff to get the testing that they need to support their safety and treatment.

The Government has also set up a home-testing service where kits can be delivered to someone's door so they can test themselves and their family without leaving the house.

The message to residents remains clear – to follow national guidance on social distancing, use thorough and regular handwashing, and follow advice if contacted by the NHS Test and Trace system. For more information, go to www.kent.gov.uk/kentprotect

**Geoffrey Lymer, Kent County Councillor
Dover West Ward**



BE ACTIVE

FREE SUMMER SPORT SESSIONS FOR CHILDREN WITH DISABILITIES

✓ Low coach to child ratios

✓ Safe environment

✓ SEN Specialist Coaches

✓ COVID compliant

2 HOUR WEEKLY SESSIONS 10.00am – 12noon:

MONDAYS— Herne Bay Juniors (Herne Bay—CT6 5DA)

TUESDAYS—Whitstable Junior School (Whitstable - CT5 1DB)

WEDNESDAYS—The Danes Recreation Park (Dover—CT17 0JE)

THURSDAYS— St Anthony's Special School (Margate—CT9 3RA)

FRIDAYS— Canterbury Primary School (Canterbury— CT2 8PT)

Booking required: info@inclusivesport.net 07805617559

THESE SESSIONS ARE FUNDED BY KCC AND ONLY
CHILDREN WITH AN EHCP CAN ATTEND

Smart Cleaning

For All Your Cleaning Needs

- **Windows**
- **Carpets**
- **Gutter clearing/repairing**
- **Fascias and lastics**
- **Commercial & Domestic**
- **Offices**
- **Jet washing**
patios/decking

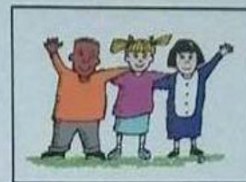
Please call or email to book
or for a quote:

Landline: 01303 778257

Mobile: 0777 584 8809

Email:

m.trow2@yahoo.co.uk



CAPEL-LE-FERNE PRESCHOOL

Serving the community since 1968

THE VILLAGE HALL LANCASTER AVENUE
CAPEL-LE-FERNE FOLKESTONE, KENT
CT18 7LX

Email: capelpreschool@btinternet.com

OFSTED No: EY306428

OPEN

MONDAY 0800 – 1300hrs
WEDNESDAY 0800 – 1300hrs
THURSDAY 0800 – 1500hrs
FRIDAY 0800 – 1300hrs
(Term time only)

Registered to offer up to 15 hours Free Childcare & Education
For all eligible 2, 3 and 4 year olds



Capel-le-Ferne Primary School
Walking Bus Stop Drop off point
Mon, Wed, Thur, Fri from 0800hrs
£2.00 (Inc. Breakfast)

Want to know more? Just knock on the door
Pop in for a look, no need to book
Can't make it to the hall? Just give us a call

TELEPHONE 07977838609



PROPERTY REPAIRS - REFURBISHMENT - CLEANING - GARDENING

Established in 1998, DMS Property Maintenance is a family run business based in South East Kent specialising in all areas of property care.

Our company offers a wide range of services such as:

- **PROPERTY REPAIRS**
- **REFURBISHMENT**
- **CLEANING**
- **GARDENING**
- **BUILDING EXTENSIONS**



**CALL NOW FOR A
FREE QUOTATION**
NO JOB TOO BIG OR SMALL!

Call: 01303 248 828

Visit: www.dmspropertymaintenance.co.uk
or email enquiries@dmspm.co.uk

Property Maintenance

LET US DO THE HARD WORK



- | | | |
|--|--|---|
| <ul style="list-style-type: none"> • Responsive Repairs • Roofing • Kitchens • Bathrooms • Emergency Call Outs • Guttering • Planned Property Repairs • Fascias / Soffits • Voids and Refurbishment • Repointing • Plumbing • Doors • Plastering • Metal Security Doors • Surveying Services • Rendering • Locksmiths • Pest Control • Tiling • Woodworm Treatment • Asbestos Removal | <ul style="list-style-type: none"> • Painting • Gas / Electrical • Decorating • Drainage • Damp Works • Jet Washing • Graffiti Removal • Cyclical Refurbishment • Brickwork • Grounds Maintenance • Gardening • Fire Precaution Works • Paving • Tree Surgery • Fencing • Wet Rooms • Carpentry • Rubbish Removal • Safety flooring/non-slip flooring • Floor Coverings • Windows | <ul style="list-style-type: none"> • End Of Tenancy Cleans • Commercial Cleaning • Sparkle Cleans • Communal Cleaning • Cleaning – Domestic / Regular • Deep Cleans • Hygiene Cleans • Facilities management • Positive input ventilation • Condensation / mould • Property health checks • Building Extensions |
|--|--|---|





BE AWARE and STAY ALERT

Reporting nuisance motorcycling

Please consider the following when reporting anti-social motorcycling and respect those who ride sensibly

Description	Location
Types of behaviour <ul style="list-style-type: none"> Speeding/racing Illegal manoeuvres Loud revving Careless driving Dangerous driving 	Contacting Kent Police <ul style="list-style-type: none"> To report a non-urgent crime visit www.kent.police.uk/report In an emergency, if crime is in progress or life is in danger, call 999 If you are deaf or speech impaired, text 'police' and your message to 60066 For more crime prevention advice visit our website www.kent.police.uk



Protecting and serving the people of Kent

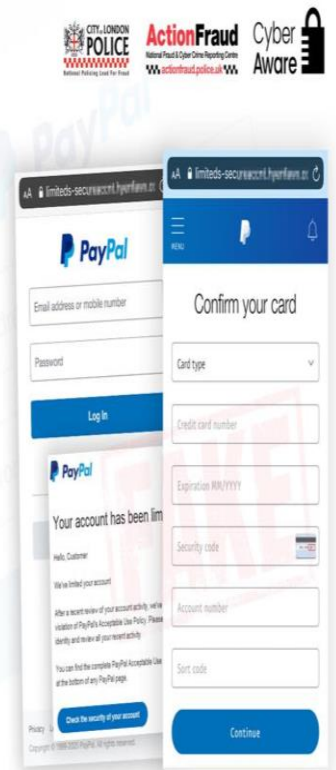
SCAM WARNING

PayPal scam reported over 1,000 times within 24 hours

Action Fraud has received over 1,000 reports within 24 hours about fake emails purporting to be from PayPal. The emails state that the recipient's account has been "limited" as a result of policy violation. The links provided in the emails lead to genuine-looking phishing websites that are designed to steal PayPal login details, as well as personal and financial information.

Your bank, or any other official organisation, won't ask you to share personal information over email or text. If you need to check that it's a genuine message, call them directly.

Spotted a suspicious email? Forward it to the Suspicious Email Reporting Service (SERS) - Report@phishing.gov.uk



Public Protection - Kent

If your MOT is due to expire BEFORE 1 August...

If the expiry date on your vehicle's MOT is before Saturday 1 August, you automatically get a six-month extension. For example, if your MOT's set to expire on 31 July 2020, this will automatically be extended to 31 January 2021. MOT will restart on Saturday 1 August – meaning if your MOT's due from then onwards, you'll need to sort the test as usual. Check the MOT status of a vehicle <https://bit.ly/2CB7cjw>

DON'T ASSUME A PHONE CALL IS AUTHENTIC JUST BECAUSE SOMEONE KNOWS YOUR NAME AND ADDRESS

Common examples of courier fraud

- Calls you out of the blue on the phone
- Asks you to withdraw large amounts of cash to hand over to them
- Asks for your PIN
- Says there is an issue with your bank account or card
- Claims to be from your bank, the police or your local authority
- Sends a courier to collect your bank card or cash

The police will NEVER...

- Contact you to ask for your PIN or bank details
- Ask you to withdraw cash to hand over to them for safe-keeping
- Ask you to transfer money out of your account for ANY reason
- Send someone to your home to collect cash, PINs or bank cards

If a crime is in progress, call 999



0300 123 2040
Monday to Friday 8am-8pm

KEEP AN EYE OUT

KEEP BURGLARS OUT

THERE'S SAFETY

IN NEIGHBOURS

Capel-le-Ferne Gardener's Association

This friendly club welcomes new members and visitors to its meetings



We meet every 3rd Tuesday of the month
at 7.30pm at St Radigunds Church Hall,
10 Albany Road, Capel-le-Ferne CT16 7JT

Interesting speakers on a variety of topics

Outings to gardens

Quizzes and social evenings

Christmas events

Three Shows a year in the village hall

for all to enter

FOR MORE INFORMATION CONTACT

Vanessa Cook or Jean Tanton

01303 256106 01303 255982



GARDENERS' ASSOCIATION

11th Summer Show @ Village Hall
July
5th Autumn Show @ Village Hall
September
17th Annual General Meeting
November @ St Radigunds' Church Hall

FOR MORE INFORMATION CONTACT

Vanessa Cook or Jean Tanton

01303 256106 01303 255982

Tai Chi

Relax and get fit!

Thursdays, 6 – 7 PM

Capel-le-Ferne Village Hall

For details contact

Anna Dashwood

01304 205 405 / 07736 849 194

www.pfstaichi.com



Stephen Huxtable Garden Services

- Private and commercial garden and grounds maintenance
- Grass cutting, Hedge cutting, Garden clearance, Turfing.
- High quality fencing supplied and erected

Free estimates

01303 891720

www.shgardenservices.co.uk

HM Government NHS

Going out for lunch?

- ✓ Wash your hands regularly
- ✓ Keep a safe distance from others
- ✓ Follow the venue's safety advice



Channels & Choices

FOREST SCHOOL

HOLIDAY CLUB

9am to 4pm Monday 3rd August to Friday 7th August
In the woodland grounds of Kearsney Manor, River, Kent.

Have a go at den building!



Chill out round the fire circle!



Go on an adventure round our lake!



Learn outdoor skills, explore the amazing woodlands and have fun!

Ages
4-11

Welcome



HOLIDAY CLUB

Age 4-11yrs

Time: 9am-4pm Monday 3rd August to Friday 7th August . Price: £30 per child

Holiday Club days are jam packed full of exciting adventures, outdoor skills, crafting, and so much more.

Enjoy den building, potion making, camp fires, obstacle courses and exploring the woodland grounds and lake.



- Safe and secure surroundings in the grounds of Channels & Choices and The Sallygate School.
- Enchanting woodland including a natural obstacle course, mud kitchen, craft area and den building.
- Run by our level three accredited Forest School Leader.

Children will be required to wear suitable clothing and footwear for sunny or wet weather as applicable. Sun hats and suncream will be necessary in hot weather. Please ensure your child brings a packed lunch and snacks, as well as a refillable bottle of drink.

Places are extremely limited. **To reserve a place call 01304 212510.**

£30 per child per day. For more information visit:
www.channelsandchoices.co.uk/forest-school



You will now be eligible for testing if you have Symptoms, which include:

- A high temperature
- A new continuous cough
- Change or loss of smell or taste

To book a test visit <https://www.nhs.uk/coronavirus>

Here is the direct link for booking a test. <https://www.nhs.uk/ask-for-a-coronavirus-test>

For home kits you will need to provide ID and have a UK Gov gateway account (some people don't)
For site tests (including drive through) you will receive a text message with a code and a link (normally from "COVIDTest"). You will need to enter the code on the link to book your slot.




All over 50s will now be eligible for a free flu vaccine

We're expanding flu vaccinations to protect the vulnerable, and support our NHS.

People over 50, those on the Shielded Patient List and those in the first year of secondary school will qualify for the free vaccination.

<https://www.gov.uk/government/news/most-comprehensive-flu-programme-in-uk-history-will-be-rolled-out-this-winter>




Face coverings make shopping safer for all



STAY ALERT › CONTROL THE VIRUS › SAVE LIVES



[nhs.uk/coronavirus](https://www.nhs.uk/coronavirus)

Hope everyone is well and staying safe.

Just to remind you that we will not be returning to Youth Club until September at earliest.



Tori's Cakes

Cake Artist



MESSAGE FOR A QUOTE: www.toriscakes.com

**FREE DELIVERY
TO FOLKESTONE,
HAWKINGE, DOVER**




HEAT PET SAFETY!

www.DVMmultimedia.com DVMmultimedia



SHADE & WATER
Protect your pets from the sun's rays and keep them hydrated.



NO CARS
Never leave a pet in the car, not even with the window cracked.





NO ASPHALT
If it's too hot for bare feet, it's too hot for bare paws.



LIMIT EXERCISE
Don't let playful pets over exert themselves in the heat.

HEAT STROKE
Excessive panting, discolored gums, and mobility problems are signs. Seek veterinary attention immediately!

1:1 Fitness Training Age Specific for Adults in Capel

As well as 1:1 Football / SAQ age specific training from ages 5 upwards in Capel

My aim is, to help people and players achieve their specific individual fitness or football goals, in a fun and enjoyable environment and for all ages and abilities.

Run by a UEFA qualified Football Coach with a Bachelor Science degree in coaching for performance in football. I have many years coaching experience with Football League Academies and National conference South, and Ryman premier senior teams.

Additional qualifications include:

**Enhanced DBS
Safeguarding training
First Aid Qualified
And Prevent Covid 19 training**

Interested?

**Please contact me, Darren Beale,
on 0787 9995053**

USEFUL CONTACTS INCLUDING ACTIVITIES & CLUBS	CONTACT NAMES	TELEPHONE NUMBER
Police Community Safety Officers	Megan Keehner	Kent Police 101
Community Warden	Janice Henry	07811271303 Email: janice.henry@kent.gov.uk
Parish Council Chair	Anthony Lake	01303 489544
Parish Council Clerk	Maureen Leppard	01303 259564 Email: clerkcapellefernepc@btinternet.com
Village Hall Webmaster/Chairperson	Sally Cook	253838 / 07730475838
Village Hall Maintenance	Brian Wilson	627172/07916258684
Village Hall Committee Secretary	Deborah Jeggo	Email: deborahjeggs@aol.com
Village Hall Committee Lettings	Sue Leaning (email preferred)	07939 095880 Email: fredandsueleaning@yahoo.co.uk
Village Hall Farmers' Market	Debbie Ovenden	07427 626754
Village Hall Committee Trustee/Treasurer	Sarah Leonard	sarahbridgeland74@hotmail.co.uk
Village Hall Committee Trustee	Derek Jeffrey	01303 259842
Village Hall Committee Trustee	Roy Mann	07725943261
Village Hall Committee Trustee	Jerry Watson	07811987254
Village Hall Committee Trustee	Tracy Ravenhall	07787174336
Village Hall Committee Trustee 100+ Club/Vice Chairperson	Caroline Bunting	Email: c.bunting@btconnect.com 07885 406433
Bridge Club	Bob Jones	01233 756362
Brownies	Register on website	https://www.girlguiding.org.uk/what-we-do/brownies-7-10/
Capel Baptist Church	Pam Barr	01303 489006
Capel Cares	Janet Milliken	01303 257003
Capel Ramblers	Bob Mothersele	01303 250931
Divas Dance	Rebecca Uden	01303 893650
Fit Friends – Pilates	Pam Vivien	01303 244322
Gardeners Association	Vanessa Cook Jean Tanton	01303 256106 01303 255982
Household Bill Savers	Phil & Karoline Taylor	01303 246887
Judo	Colin Carrott	01303 211594 / 07917131571
Playgroup	Alison Cloake	07977 838609
Remote Control Car Club	Derek Jeffrey	01303 259842
Short Mat Bowls	Ros Chandler	01303 255862
St Radigunds Church	Rev Brian Williams	01303 243784
St Radigunds Church Hall Events	John Oliver	01303 251403
St Radigunds Church Hall Bookings	Audrey Goaten	01303 244735
St Radigunds Players and Choir	Jerry Spillett	01303 242146
Tai Chi	Anna	01304 205405
Twinning Association	Jerry Spillett	01303 242146
Welcome to Village Letter	Debbie Catling	01303 251525
WI	Caroline Bunting	07885 406433
Youth Club	Simon Withey	07860803767

Recycling/Waste Collection Dates:

**Food Waste, Rubbish (Grey lid)
& Green Waste**

**Fridays
14th and 28th August**



**Food Waste & Recycling (Blue lid)
Fridays,
7th and 21st August**

SIGHTLOSS GROUP:

The Folkestone Macular Society Support Group meets on the last Friday each month from 10:30am to noon at The View Hotel, 30-32 Clifton Rd, Folkestone CT20 2EF. All welcome. Meeting other people with macular disease helps you understand your condition, share information about treatments and stay independent. For more information call Margaret on 01303 226 877 or email: help@macularsociety.org

Shepway Writers Group

Are you interested in creative writing?
Now's your chance to put pen to paper and write short stories, poetry, or even that book you've been meaning to write. Our informal group meets every month in Folkestone. It's free to join, so why not come along and give it a go?
Contact Graham on 01303 470229 or 07722 560702.

CAPEL HEDGEHOG CARE

Facebook Page:

<https://www.facebook.com/groups/198980734375665/>

We have a collection bin in the foyer of the Village Hall. If anyone would like to donate clean newspapers or meaty wet/dry cat food, it would be really appreciated.

THANK YOU



CAPEL-LE-FERNE WILDLIFE
FACEBOOK PAGE SEARCH Capel-Le-Ferne Wildlife
AND JOIN OTHER RESIDENTS DISCUSSING ALL THE WILDLIFE IN OUR VILLAGE



KNIT & NATTER, REECE ADAMS HOUSE, CAULDHAM CLOSE.
Crochet is on the agenda for beginners. Or if crochet is your passion, maybe you could help teach others.

We make a grand cup of tea. No charge.
EVERY THURSDAY, 2pm till 4pm. Everyone Welcome!
For more information contact Maggie 01303 245046.





Computer Problems Solved
Tel: 01303 241325 Mob: 07968 129902
Approx **£45**

- *Computers, laptops, tablets, smart phones and TVs, PCs set up & supplied.
- *PC setup includes Internet, Email, Security, Video calling, Office Programs, data transfer
- *Data recovery
- *Internet connection problems
- *Web sites built & hosted from £10 per month.
- *Tuition available by a qualified tutor

Ring Tony for a fast and friendly service
See www.computers-in-kent.co.uk for details



Jessica Young,
T/A Young's Accountancy Services
MAAT, Accountancy, Book-keeping,
Payroll and VAT services
For small businesses and sole traders
Free initial consultation. Flexible hours
Contact details:
Mob: 07561 112178. Tel: 01303 259734
Email: contactyoungstoday@gmail.com

Absolute Security
LOCKSMITHS
Opening hours: Mon-Fri, 9am – 6pm
Saturday, 9.30am – 1.30pm
No call out charge – 24 hours, 7 days
All types of locks, open-supplied-fitted
Boarding Service - Emergency Repairs.
Key Cutting. Domestic & Commercial.
Shutters, Grilles, Bars, Safes.
01303 210057 / 07938599863

G B Haworth 
Painter & Decorator
Interior & Exterior
Free Estimates Capel - 244206

Simpson Aerials
Your local aerial installer
We install, repair and tune all TV and Radio
Aerials and Satellite, including Freeview, Freeview
Plus, Freesat and Freesat plus. Est: 1988
Call Peter on
07971807150  

CAPEL VEHICLE SERVICES

All makes of cars serviced and repaired.
MOT's & repairs, mechanical and welding.
Tyres, Exhausts, Batteries Supplied & Fitted
Competitive rates. No VAT.
Friendly efficient service
Call John Horne 01303 255894
Local free collection and delivery available if required



CREATING QUALITY FOR OVER 40 YEARS



- All types of paving (driveways, patios, pathways)
- Full driveway & dropped kerb packages
- Bricklaying & retaining walls
- Resin-bonded gravel
- Tarmac & concrete
- Dropped kerbs

CONTACT US FOR A FREE ESTIMATE


T: 01303 253437 / M: 07788 146673
capelgroundworks@btinternet.com
www.capelgroundworks.co.uk
Local Council Approved Contractors





FITTING CREATIONS
BLINDS – CURTAINS – SHUTTERS

Friendly Family Business
Local to you
01303 894882 07506 144427
www.fittingcreations.com
info@fittingcreations.com



Capel Garage 

30 Old Dover Road,
Capel-Le-Ferne

SERVICING

- Repairs
- Exhausts
- Tyres
- Batteries

MOT's

- Cars
- Bikes
- Vans
- Quads

Tel: 01303 254282

Items for September 2020 issue to be with
Maureen Leppard (Editor) at 39 Victoria Road, Capel-le-Ferne CT18 7LT,
(Tel: 01303 259564) or Email: clerkcapellefernepc@btinternet.com
by 6pm, Sunday, 16th August 2020. **NO JANUARY ISSUE**
PLEASE NOTE IT IS EDITOR'S DECISION ON FINAL CONTENT