



**The Planning Application for the following has been submitted to Dover District Council**

**13/00716 | Erection of a Anaerobic Digestion Plant and silage clamps, and the formation of bunds, and drainage ponds, and associated hard standing and landscaping | Great Cauldham Farm, Cauldham Lane, Capel-le-Ferne, Folkestone, CT18 7HQ**

There are 26 documents attached to the Application and the link to view these is as follows:

<http://planning.dover.gov.uk/online-applications/applicationDetails.do?activeTab=documents&keyVal=DCAPR222307&prevPage=inTray>

**We have 21 days (9th October) to put in our comments.**

Your individual comments should be made direct to Dover District Council either on-line at, <http://planning.dover.gov.uk/online-applications/>

by email: Email [developmentcontrol@dover.gov.uk](mailto:developmentcontrol@dover.gov.uk)

or by letter to Planning Department, Dover District Council, Council Offices, White Cliffs Business Park, Dover, Kent CT16 3PJ

**PLEASE DO COME TO THE EXHIBITION TO FIND OUT MORE INFORMATION**

**Public Exhibition**

Proposed On Farm Anaerobic Digestion Plant to Produce Local Renewable Energy At

H. W. Snape & Son

Great Cauldham Farm, Capel-Le-Ferne



**Public Exhibition 4pm - 8pm**

**Monday, 30<sup>th</sup> September**

Village Hall, Lancaster Avenue,  
Capel-le-Ferne, CT18 7LX

Please come along to find out more about this on farm green energy diversification project which has the potential to produce large amounts of renewable energy from agricultural break crops

**Capel Church Hall Fund**

PRESENTS A TALK BY

**MIKE FAWKE**

**THE ROLE OF A SHIPS PILOT**



ST RADIGUNDS CHURCH  
ALBANY ROAD CAPEL-LE-FERNE  
ON FRIDAY OCTOBER 11TH 2013  
AT 7.30PM (DOORS OPEN 7PM)

TICKETS ONLY  
£5  
TEA & BISCUIT  
INCLUDED

FROM  
JOHN OLIVER  
22 ALBANY RD  
01303 251403



**HARVEST SUPPER**

**SATURDAY, 12th OCTOBER**

St Radigund's Church, Albany Road,  
Capel-le-Ferne  
Starting 7.30pm

Two course hot meal - followed by a little entertainment  
Admission is by ticket £6.00. (£3.00 for children 16 and under)  
available from Jerry Spillett (01303 242146)  
until 11th October.

Harvest Festival Service at 11:00am on Sunday, 13th October.

*If you know the details of your event in advance, please let Parish Clerk know so organisations avoid booking same date*

**"WHAT'S ON" IN CAPEL-LE-FERNE**

28 <sup>th</sup> Sept	Youth Club Quiz Night at Capel School at 7pm.
1 <sup>st</sup> Oct	CapelARA - Operation Sunshine
11 <sup>th</sup> Oct	Mike Fawke - 'The Role of a Ship's Pilot' (page 2)
12 <sup>th</sup> Oct	Cancer Research Jumble Sale @ Village Hall
8 <sup>th</sup> Oct	WI meeting: Ecuador, Amazonia to the Andes
27 <sup>th</sup> Oct	Indoor Boot Fair
2 <sup>nd</sup> Nov	Christmas Craft Fair (page 3)
5 <sup>th</sup> Nov	CapelARA-Commonwealth War Graves Commission
8 <sup>th</sup> Nov	Capel School Firework Display
10 <sup>th</sup> Nov	Remembrance Day @ Battle of Britain Memorial
1 <sup>st</sup> Dec	Indoor Boot Fair
3 <sup>rd</sup> Dec	CARA Christmas Social
7 <sup>th</sup> Dec	Capel School Christmas Fayre
15 <sup>th</sup> Dec	Village Carol Service
26 <sup>th</sup> Jan	Indoor Boot Fair
23 <sup>rd</sup> Feb	Indoor Boot Fair
30 <sup>th</sup> Mar	Indoor Boot Fair

**Cancer Research Jumble Sale**

**We are holding our Autumn Jumble Sale on Saturday 12<sup>th</sup> October at 2 pm.**

This is just a reminder that there's still time for you to sort out a few more items you might no longer need, that you think might be of use to someone else.

Oh and to remind you to come along too!

If you do have any good quality jumble please bring it along to the hall on the morning of the 12<sup>th</sup>. It will all help to raise much needed funds.

Or if it's too large an amount and you'd like it collected ring: 01303 254740 or 07949546011

Many thanks to you all! The Organisers

<b>Benefice Services for OCTOBER 2013</b>
---

Date	Alkham	Capel	Hougham
Sunday 6th	Evensong 6.30pm	Eucharist 9.30am	Worship Together 11am
Sunday 13th	Harvest Festival Eucharist 9.30am	Worship Together 11am	
Sunday 20th	Family Service 11am	Evensong 6 pm	Eucharist 9.30am
Sunday 27th	Benefice Eucharist 10 am		

### *From the Vicarage*

"We haven't seen you!" she said. Then she walked away, without introducing herself. It sounded – and felt – like criticism. I was evidently going wrong somewhere, and I wondered what I could do to put things right.

I told one of our churchwardens that apparently I was not as visible locally as some might like. "Ah!" he said, "Your predecessors have all been keen dog walkers." Since moving in we have acquired a cat, but if she catches me leaving the house she sometimes follows me along the pavement, crying for me to come home - so she's no help.

Next I spoke to someone at the Capel Farmers' Market. I explained the problem – no dog. "But I see you all the time!" she smiled reassuringly. I asked her advice: should I just walk around without a dog, greeting people? She seemed to think that some people might find that strange, so not a good idea.

I was still stuck when a few days later I found a book called *The Country Vicar* in my office. I bought it a while ago – perhaps this would explain what people should expect, and what I should be doing. So I started to read it again.

George Herbert, a seventeenth century courtier and poet turned vicar, wrote a book called *The Country Parson*. He describes a parson as, ideally, one who treats his flock like a father treats his children - he knows everyone, visits them, takes an interest in them and lots, lots more. As Vicar to about two hundred mainly poor and illiterate farm labourers in Bemerton, Wiltshire, Herbert tried to live up to all this, as have many vicars since, but sadly died after just three years in the job.

The world has moved on since Herbert's time. Just as the village policeman who walked his beat, knew everybody and clipped the ears of boys who scumped apples is now just a fond memory, so too is Herbert's Country Parson – though understandably many still wish that vicars were just like that. Today, a police officer's tools are radios and patrol cars. Today most vicars have more than one parish, mounds of paperwork, inboxes heaving with emails and telephones that keep ringing (eight calls since I sat down to write this!) Unlike Herbert's flock, their parishioners can now read, drive cars, watch TV, and use computers.

I read on, and realised that whatever I do I can't win - I'm never going to match George Herbert's ideal parson. But never mind, because neither will anybody else! So I'll just do my best, like the rest.

So you might just see me in the pub, despite what Herbert said about parsons and alehouses. Actually, you may well see me out walking, perhaps even being followed by a cat. But just as the police are now only a phone call away, so too is this particular country parson. Just ring 01303 243784. *Brian*

### Capel-le-Ferne Church Hall Fund

On Friday the 13th of September it was good news for The Capel Church Hall Fund and The Battle of Britain Memorial Trust as the talk on The Battle of Britain by Dr John Ray in St Radigunds Church was well attended and was much appreciated by all. Dr Ray is an eminent Historian and renowned authority on the B of B and his fame attracted a large audience to the extent that from the sum of £370 raised a donation of half the profit i.e. £185 has been donated to The Battle of Britain Memorial Trust.

Our next event on Friday 11th of October will be by Mike Fawke, who has been a Capel resident for many years, and it is entitled 'The Role of a Ship's Pilot'. Mike is a Pilot on the Medway and Thames Estuary and promises to be a very interesting evening.

Please come along and support Mike and at the same time help towards covering the cost of new heating which we need to install in the Church Hall.

**John Oliver - Chairman Capel Church Hall Fund. 01303 251403**

The Church Hall at St Radigunds is very much a Community Hall as most activities and bookings are not connected with the Church and hire of it is available to all SO IF YOU WISH TO BOOK THE HALL FOR WEEKLY EVENTS OR JUST ON A ONE OFF BASIS FOR PERHAPS A PARTY THEN CONTACT THE LETTING SECRETARY, STEVE LEONARD ON 01303 670445 or mobile 07525 254114.



### I work in partnership with an award winning British Plc.

I am looking for motivated, enthusiastic people, who would like a recession proof part time business opportunity. Working the hours you choose, around your current day job. If you are serious about wanting to be more financially secure then.

Book your place now, for a brief presentation in Capel on:-

Friday 11<sup>th</sup> October at 7.00pm or 25<sup>th</sup> October 7.00pm

**Limited spaces Phil 07766335116**



## CAPEL-LE-FERNE VILLAGE HALL MANAGEMENT COMMITTEE

Registered Charity Number 281.786.

PROVIDING SERVICES FOR OUR COMMUNITY

All this information and more can be found on our website [www.capel-le-ferne.org](http://www.capel-le-ferne.org)

Please help us keep this up to date by contacting our Webmaster

Committee Meetings are held at the Village Hall on the First Tuesday of every month at 7.30pm.  
A REPRESENTATIVE FROM ALL HALL CLUBS & USERS, IS REQUESTED TO ATTEND MONTHLY MEETINGS

THE ANNUAL GENERAL MEETING WILL BE HELD ON TUESDAY, 26<sup>th</sup> NOVEMBER 2013

**INSIDE THE HALL** Boxes are provided for: Unwanted shoes for charity, Used Stamps for Moorfields Eye Hospital & Hearing Dogs, Plastic Lids/Bottle Tops for Kent Air Ambulance & a Wheelchair Charity  
Please place the above in the relevant boxes provided.

### CONTINUOUS EVENTS

**Quiz Sheets:-** Available (£1 per sheet) at the Farmers Market or from Cherry Leppard, 29 Albany Road, first prize £25. The answers are placed in the Grapevine and on the Website.

**100+ Club:-** £12 per year your number is placed in a draw, every month for 1<sup>st</sup> Prize £25, 2<sup>nd</sup> £15, 3<sup>rd</sup> £5 These DOUBLE in December! The draw will take place at the Committee Meeting on the 1<sup>st</sup> Tuesday of each month.  
Contact Wendy 259120 for further information  
**Farmers Market:-** Tuesdays 10 a.m. to 12.30 p.m.  
Approximately 20 stalls, selling local produce every week.

### FUND RAISING EVENTS

**INDOOR BOOT FAIRS** - 8 a.m. to Noon

27<sup>th</sup> October, 1<sup>st</sup> December 2013,

26<sup>th</sup> January, 23<sup>rd</sup> February, 30<sup>th</sup> March 2014.

Tel: Wendy 01303 259120

for more information.

**CHRISTMAS CRAFT FAIR**

2<sup>nd</sup> November

Contact Jerry 258865 for more information.

### 100 CLUB WINNERS – SEPTEMBER

1<sup>st</sup> 30 Jess Young. 2<sup>nd</sup> 14 Jean Jeffreys  
3<sup>rd</sup> 7 Janice Whittle

**Capel-le-Ferne History Book**

“Village in the Clouds”

Copies still available ..... £5 each

From Cherry - Tel: No: 01303 255114

### GARAGE SALE SAFARI REPORT

Yet another Safari has passed with ‘flying colours’.

What a fantastic day we had, with 117 garages taking part in the village, the atmosphere was wonderful.

We would like to thank everyone who helped to make this day a success, including the fantastic team in the refreshments, car parking attendants, map sellers, advertising and bookings.

Without whom the day would not have gone so well.

The final total raised was £1,400 for your village hall funds – well done everybody and here’s to next year!

### UPDATE ON THE VILLAGE HALL

Last month the Village Hall Committee published an item asking residents to come forward to help by becoming an officer on the Committee. Some local residents asked “how the problem arose”. The Secretary and Treasurer made it clear at the beginning of this financial year that they plan to step down at November. We have spent the year trying to recruit local residents to replace them. (Following last month’s article in Grapevine someone has come forward expressing a willingness to act as Treasurer, which is a great step forward). The Vice-Chairman has had a change of personal circumstances and can no longer continue. Faced with this the Chairman realised that, without the support of these three officers it will not be possible to continue. **We have been in touch with the Charity Commission for help and advice. Their response is clear – if officers (Chairman, Vice Chairman and Secretary) cannot be recruited then the charity will be closed down.** It is hard to believe this will be the fate of a hall which is so well used by so many residents – either themselves or their relations and envied by many other villages. Closure of the Charity will be complex.

The situation was again discussed at the last Committee meeting and it became clear that closing the charity down this November would cause immense problems for those organisations that have already made bookings for 2014. In view of this, the current Chairman will continue until November 2014 at the latest. This will allow time for new officers to be identified/identify themselves and, if closure cannot be avoided, enable adequate notice to be given. If potential officers cannot be identified then bookings can be accepted up to 24<sup>th</sup> November 2014 in line with the AGM. This can be reversed as soon as new potential officers come forward. Current and ex-committee members and many friends are willing to continue helping with the range of activities. Organisers of the Garage Safari day, the Craft day, the Boot Fairs the Farmers’ Market and other fundraising activities are prepared to carry on. The hall was donated to the Village for use by residents to be managed by residents. We need someone to come forward to help save it for the next generation. Please contact Jayne 211480 or any of the trustees whose details are in Grapevine under useful telephone numbers, on page 11. All Committee Members agree it is a light hearted, enjoyable and a great way to meet people and make friends if you are new to the village. New blood will keep our hall vibrant.





## CAPEL-LE-FERNE YOUTH CLUB

Every 1<sup>st</sup> and 3<sup>rd</sup> Thursday in the month from 7.30pm to 9.30pm.

Please come along and your first evening is free!



**Please ensure you collect your children from the hall, not the Car Park, even on light evenings.**

3<sup>rd</sup> October - Football and Pizza Making.

17<sup>th</sup> October – Games Night.

7<sup>th</sup> November – Firework theme cooking and Curling.

21<sup>st</sup> November – Quiz Night.

5<sup>th</sup> December – Christmas Crafts, Mince Pies/Jam Tarts and Football.

19<sup>th</sup> December – Kidz Planet.

16<sup>th</sup> January – Football and Pizza making.

Any issues/queries - Please contact the Chairperson, Simon on 07860803767 and find us on Facebook to keep up to date with all info about Capel Youth Club.

### **28<sup>th</sup> SEPTEMBER - QUIZ NIGHT**

**@ Capel Primary School**

**6.30pm for a 7pm Start.**

**£2.50 Adults. £1.50 for Children.**

**6 to a table.**



### **Capel-le-Ferne Playgroup**

Village Hall, Lancaster Avenue, Capel-le-Ferne, CT18 7LX

capelpreschool@btinternet.com

Running for over 40 years

Ring Alison on 07977838609 or drop in during one of our sessions.

A few vacancies available

\*\*\* Ofsted 2010 - Outstanding environment and good in all other areas. \*\*\*

\*\*\*\*\*

Open Term Time - mornings Monday, Wednesday, Thursday & Friday.

All members of the Senior Citizens Forum for the Towns and Villages of Dover District will shortly be receiving an invitation to an open meeting to mark "Full of Life Day" to be held at St Marys Church Hall, Dover on 17th October 2013. There will be speakers, stalls and lunch with entertainment and it is "Free". Members are encouraged to bring a non-member along with them. If you can attend please let the organising committee know to facilitate catering for lunch, details will be in the Newsletter/invite. New members are always welcome and membership is free and the Forum strives to represent older people in our area.



### **Judo I.B.F. Club ET.1978**



**Capel le Ferne Village Hall - Every Wednesday**

**Juniors (6-9 years) 5.30pm-6.30pm**

**Seniors (10 years +) 6.30pm-8.00pm**

**Senior Coach: Colin Carrott 3<sup>rd</sup> Dan Tel: 01303 258942**

**Technical Advisor: Colin Ogburn 3<sup>rd</sup> Dan**

**Tel: 07870 822 510. New Members Very Welcome**

**Up to 5 Qualified Insured Instructors & Coaches to give expert tuition.**

**Come & try this DYNAMIC MARTIAL ART**

# BRIGHT IDEA

**ELECTRICAL SERVICES LTD**

**Colin Newton**

[www.brightideaelectrical.com](http://www.brightideaelectrical.com)

[enquiries@brightideaelectrical.com](mailto:enquiries@brightideaelectrical.com)

**T 01303 778366**

**M 07855 431330**



### **Safe and sensible street lighting**

The energy used to light Kent's streets next year will cost £6.4 million and will produce 29,000 tonnes of carbon emissions.

Over the past 2 years we have implemented a number of initiatives to reduce energy consumption, we have:

- replaced 3,441 failing lamps with energy efficient ones
- set lights to come on later and go off earlier
- dimmed lights at predetermined times

These initiatives have reduced energy charges by £130,000 annually but we need to do a lot more to combat the rising cost of energy and reduce pollution.

#### **DOVER December 2013**

- **Phase 1 - trial the switch off of unnecessary lights –**
- **Phase 2 - part-night lighting**

**Further details**

[http://www.kent.gov.uk/roads\\_and\\_transport/highway\\_maintenance/roads\\_and\\_pavements/street\\_lights/sensible\\_street\\_lighting.aspx](http://www.kent.gov.uk/roads_and_transport/highway_maintenance/roads_and_pavements/street_lights/sensible_street_lighting.aspx)

**CAPEL BAPTIST CHURCH**  
*Capel Street. Services 10.30am.*  
**Speakers for OCTOBER 2013**

**6<sup>th</sup> Pam Barr**

**13<sup>th</sup> Richard Blackwell**

**20<sup>th</sup> Gloria Guest**

**27<sup>th</sup> Revs Michelle and Tim Parkman**

**ALL WELCOME TO THESE ACTIVITIES**

*If there are queries regarding these details,  
 please call 01303 251086. Gill Cooper*

***Please! A reminder that the public are requested  
 not to park in front of the gates on Sunday  
 mornings as this is a disabled access.***

## **A S Maintenance**

Local Handyman Services

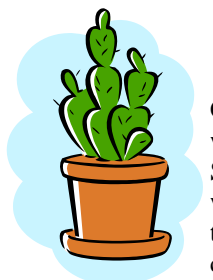


Painting & Decorating  
 Plumbing  
 General Household Maintenance

Tel: 01303 884942

Mobile: 07505 134 732

Email: [andy@as-maintenance.co.uk](mailto:andy@as-maintenance.co.uk)



### **Capel-le-Ferne Gardeners' Association**

Capel Gardeners would like to thank all who attended their Autumn Show on 7th September at the Village Hall. The exhibits were superb and the refreshments were of the usual high standard. Thanks to all the committee and helpers who made the show so enjoyable.

We unfortunately lost the away leg of the Quiz against West Hougham Gardeners on 4th September by 2 points, if only our table had played their "Joker" on a different topic, but there you are.

The October monthly meeting is a second talk on Local Archaeology by Andrew Richardson who gave us an interesting and enjoyable first instalment last year, the monthly competition is for a Pot Plant of a Succulent, the meeting will be in the Church Hall in Albany Road as usual at 7.30pm. Everybody welcome, admission is £1.00 at the door.

**Any enquiries to Gess Harman 01303-255661.**

### **Pro Services – Paul Relf Optimum Services**

4 Queen's Lea, West Hougham, CT15 7BJ.

**Tel: 01304 214166. Mobile: 07787 910961**

Garden & Property Maintenance Services &  
 Handyman

**No Job too small**

Projects and all types of jobs you need doing in  
 your garden, or inside and outside your home.

I'm friendly, reliable, local and trustworthy.

If you would like to enquire about any job, without  
 obligation, it will be nice to hear from you.



**Jessica Young - MAAT**  
**Accountancy, Book-keeping  
 and Payroll services**

**For small businesses and sole traders**  
**Free initial consultation - Flexible hours**  
**Contact details**

**Mob 07704 518251 Tel 01303 259734**

**[jessicayoung323@gmail.com](mailto:jessicayoung323@gmail.com)**

# **InsideOut Cleaning and Maintenance**

***Carpet and upholstery cleaning***

***Window Cleaning***

***Cleaning of debris and leaves from gutters***

***Mould removal from conservatory's***

***fascia and gutters***

***Oven Cleaning***

***Patio Cleaning***

**[www.cleaning-insideout.co.uk](http://www.cleaning-insideout.co.uk)**

**Call for a free quotation**

**01303 250392 or 07842 624786**

**10% discount**

**for OAP's**

## **ARCHERS DECORATING**

Established 25 years

For all your home decorating needs

Check out my feedback on [www.check-a-trade.com](http://www.check-a-trade.com)

For a quote at a time that suits you, call or email me on;

**01303 627 021 / 07901 767 925**

Email: [archers\\_decorating@yahoo.co.uk](mailto:archers_decorating@yahoo.co.uk)

## CAPEL-LE-FERNE PARISH COUNCIL

<https://www.facebook.com/CapelLeFerneParishCouncil>  
Twitter Account @CapelParishCoun



<https://www.facebook.com/CapelLeFerneParishCouncil>  
Twitter Account @CapelParishCoun

### Summary of items discussed at meeting on Tuesday, 17<sup>th</sup> September.

**The meeting received one request to address the Council** – This was in relation to the continual speeding issue on B2011 with use of road in event the A20 closed and by Police in an emergency. Resident was informed that Councillors have continued to campaign to stop speeding for several years now, including the re-positioning of the speed signs either end of village. At the October meeting, several outside agencies would be attending to address this, including the possibility and investigation of introducing a scheme “Community Speed-Watch” in the village. • **Community Recreational Project** – (See page 7 for full report)! **Outdoor Gym** – All faulty items now corrected. **Skate-Park** – Minor corrosion areas being queried with Supplier. Sound-proofing quotation received for installing plywood and foam inside ramps - negotiations to take place with supplier, on reduction of cost and will be discussed at next meeting. **Benches, bins, trees and signs** - 2 new seats ordered for installation between gym equipment and skate-park. Re-siting of waste bin from Lancaster Avenue boundary to skate-park area requested. Woodland Trust - waiting confirmation on application of free saplings. Consideration will be given next year, depending on funds available, to buy further trees to replace those removed and to be planted elsewhere on the field. 3 New metal CCTV signs ordered. • **Neighbourhood Watch** – Communication with information and progressing of scheme, together with recruitment of more members is on-going. A meeting with those already interested will be arranged shortly. • **Highways** – Gas main renewal works on B2011 being monitored and checked that reinstatement of ground meets Parish Council satisfaction. Obstruction of highway by signage reported to contractors. Capel Street verge marking posts – waiting grant funding from Kent County Council. • **Crime issues** – Police reported no further signs of illegal substances in skate-park area and some minor parking problems had been investigated. If anyone has anything they would like Police to be aware of, please let them know. See Police insert below. **Other items** – Reports received: On QE II unveiling event - Councillors to discuss at a future meeting the possibility of holding another event next year and, questions/answers from recent meeting held on Anaerobic Digester Plant - document of questions to be produced for residents, to consider asking at the exhibition (see front page).

**Next Parish Council meeting is on Tuesday, 15<sup>th</sup> October at 7.30pm in the Village Hall (Small Hall).**

**A COPY OF THE MEETING'S AGENDA WILL BE AVAILABLE ON THE PARISH COUNCIL WEBSITE A WEEK BEFORE THE MEETING.** <http://www.capel-le-fernepc.kentparishes.gov.uk>

**ALL PARISH COUNCIL MEETINGS ARE OPEN TO THE PUBLIC, SHOULD YOU WISH TO ATTEND.**

**HOWEVER, SHOULD YOU WISH TO ADDRESS THE COUNCIL, PLEASE INFORM THE CLERK PRIOR TO THE MEETING!** Further information on any of the above or to contact Parish Council, please write to Parish Clerk, 39 Victoria Road.

Tel: 01303 259564. Email: [maureen.leppard@btinternet.com](mailto:maureen.leppard@btinternet.com) -  
Or visit our website [www.capel-le-fernepc.kentparishes.gov.uk](http://www.capel-le-fernepc.kentparishes.gov.uk)

We're pleased to see how many people are enjoying the new mini skate park, on wheels themselves or watching. And yes, we have noticed Dad having a go occasionally. One thing we would remind parents and guardians about the use of appropriate safety gear. Christmas is just around the corner, an ideal time for letters to Santa or requests for ideas from relatives, to suggest some pads or headgear. These come in a wide variety of colours and designs.



Having a Christmas Party this year?

**Mobile Disco The Party Guy**

Local and reliable. Personal attention and choice of music for all your parties and events.

Contact Graham on: 01304 211612 or 07931 567521  
[www.thepartyguy.talktalk.net](http://www.thepartyguy.talktalk.net) e-mail [thepartyguy@talktalk.net](mailto:thepartyguy@talktalk.net)

**If you have information about crime, phone**



- Your call is free
- You do not have to give your name
- You may receive a reward

Crimestoppers Trust is a registered charity number 1106697



**Kent Police**

**Protecting and serving the people of Kent**

Call 101 (non-emergencies). If life is in danger or crime is in progress call 999.

[www.kent.police.uk](http://www.kent.police.uk)

Or contact PCSO Gretel May

Mobile: 07772226209 or Email:

[gretel.may@kent.pnn.police.uk](mailto:gretel.may@kent.pnn.police.uk).

**Each of the Police Contact Points will make their visits on a two-weekly basis, spending 60 minutes in each location.**

**The Police Contact Point for Capel-le-Ferne will visit on alternate Wednesdays, 5pm-6pm, Village Hall Car Park, Lancaster Avenue.**

**For more information, visit: [www.kent-pcc.gov.uk](http://www.kent-pcc.gov.uk)**

**Twitter: @AnnBarnesKPCC**

**Dates are: 2<sup>nd</sup>, 16<sup>th</sup> & 30<sup>th</sup> October, 13<sup>th</sup> & 27<sup>th</sup> November, 11<sup>th</sup> December and 8<sup>th</sup> January 2014.**



- Discuss any policing issues with a neighbourhood officer
- Expert crime prevention advice
- Have your say on policing in Kent by taking part in our survey
- Free property marking kits available



## Capel Outdoor Recreational Facilities Update Olympic & Jubilee Legacy



### Two down, two to go....

It's great that so many people are making use of the outdoor gym and skate-park – we are now concentrating our energies on raising funds for the zip wire and petanque court.

Thank you to the youths of the village who worked hard to submit a grant application to the Youth Opportunity Fund – a bit of a wait to find out if approved, so please keep your fingers crossed! Also, thank you to Mick Marshall and Barry Mansfield who have been providing the group with invaluable information about the petanque court and who also organised a fantastic trip for villagers to the Etchinghill facility. And yet another thank you – to Mr Amin for agreeing to donate the profits from his Indian Evening at the village hall to the petanque fund.

An application has been made to the You Decide Neighbourhood Forum for £2500 – we should know on the 16<sup>th</sup> November if we have been successful. If you would like to go along to the You Decide event to play your part in voting for local community projects, please just turn up – details can be found at:

[www.dover.gov.uk/Community/Community-Portal/Getting-Involved/Neighbourhood-Forums](http://www.dover.gov.uk/Community/Community-Portal/Getting-Involved/Neighbourhood-Forums)

A few larger grants are coming up and we are beavering away to create robust applications in the hope that we can secure the final £6,869 for the zip wire and £6,500 for the petanque.

Dover District Council have agreed to relocate a rubbish bin near the skate park and gym – meanwhile, please use the nearest bin rather than the floor – remember, they are YOUR facilities, please look after them.

Within the mini skate park there is a metal bench – please be aware that this bench is a grind bench used by the more adventurous of our riders. As a consequence, the bench is likely to have sharp edges and will snag clothes – a park bench is to be located near the new facilities shortly so please bear with us.

**If you have any fund-raising ideas, raise some money yourselves for the items or wish to make a donation, please contact the Parish Clerk, Maureen Leppard, 39 Victoria Road. – 01303 259564.**



*Chantal Blythe*  
Community Warden



*Capel-le-Ferne Community Project Group*  
Cherry Leppard, Maureen Leppard, Keith Pilcher,



*Lynn Brisley*  
DDC Community Development



Like many others I was present when the new skate park was formally opened, what a nice afternoon it turned out to be. On my way home I was reminded that a number of years ago I was involved in a group of Capel people who worked very hard to set up a new Post Office. Sadly, later on, the government of the day caused a number of these rural post offices to close and ours was one of them. But it does not detract from the efforts that those people carried out, to get the Post Office. A couple of years later, another group of Capel people got together and set about creating the children park. Here we are several years later and the park is still there and being used. Now the latest episode is the new skate park and exercise area that has arisen because of another group of Capel people who decided that the new parks should happen. There is an important story here, and it is that this village of ours should be proud that there are those in this village who are far sighted and possess the attitude that nothing is impossible, and are willing to give their time and efforts to make their wishes come true and to the advantage of this village. It clearly shows what can be done if villagers are prepared to do something. To all those hard working people including those who run our Village Hall - and on this latest occasion especially Lynn - I would like to say a big thank you. **Bernard Dowley**

### CAPEL GUIDES

Capel Guides has started again. Girls are welcome between the ages of 10-14 years old.

Come along and join in the fun. Congratulations to my guides who took part in the 1<sup>st</sup> Folkestone Division Netball tournament and WON. They did me really proud! We are also going to the "big Gig" Pop Concert at Wembley in October. We are also looking for a new helper. 2 Hours a week during term time. If you can help, or know of anyone interested in joining, either helpers or girls, please phone Rachel on 01303 210702 or 07853193935.

We look forward to seeing you soon.

## FARMERS MARKET NEWS - FIND US ON FACEBOOK!

**Registered with the Kent Farmers Market Association**

**5\* Award from Dover District Council - Now in our 11<sup>th</sup> Year**

Well, we don't like to bore you, so yet again we have changes afoot!

Unfortunately Farmer Palmer (our meat supplier) has pulled out of our market due to their business closing down – we are very sorry to lose them as they have been with us for so long. However, don't despair, we have a new supplier, Romney Produce Ltd, who will be providing a wide range of meats including lamb, pork, beef, chicken, game, sausages, bacon etc. - all locally produced on the Romney Marsh. The addition of the Game should be an added attraction for all. We do hope you will come along and support them. We also have R & R Ales, producing Kentish Ale who has recently joined us, another product certainly worth a try. Plus Activ Pancakes who are providing ready cooked, cooked on the spot or mix to take home and cook yourself. They include Gluten and Wheat free too for those on special diets.

The new Craft Hall is proving popular, with a variety of products all locally produced. Some of the stalls will not be there every week, so we can 'chop and change' to give our customers a variety. Our 'Postal Service' has now joined them there too, along with our resident Photographer. Do take a look and see the locally made products for sale, great Christmas presents if you have started thinking about it!!

We are so thankful to those of you who have kindly offered your services both in the kitchen and help with clearing up after the market – we now have a great team of volunteers on a rota, but HOWEVER, CAN YOU HELP TOO? - We are still seeking more volunteers for the Rota, to allow for holidays, sickness etc. If you feel you could help us in any of the above way, please contact Jenny or Cherry.

Visit our Facebook page for photographs and further information.

A Newsletter is sent out to many interested parties, and is also added to our FACEBOOK page.

If you would like a copy, please e mail [capelfarmersmarket@yahoo.co.uk](mailto:capelfarmersmarket@yahoo.co.uk).

Please note: The products for sale are produced (in the majority of cases) by the stallholder, in Kent, unless clearly marked otherwise.

Our present products are:- Fish, Meat, Eggs, Preserves, Jams, Honey & Pickles, Delicatessen, Smoked Fish, Meat & Cheese, European dishes, Bread, Cakes & Pastries, Olives, Vegetables, Fruit, Pancakes, Sweets, Ice cream, Kentish Ale, Fruit Liqueurs, Pet Food, Plants and several Craft stalls. James Taylor Photography attends with his portable studio for portraits, passport, driving licence photos etc, printing your holiday snaps etc. in the small hall.

We should point out that we ensure our producers hold the relevant certificates i.e. a public liability insurance and, where necessary, health and hygiene certificate and kitchen registration documents.

### ***Capel Active Retirement Association***

Bert Sheppard, our Chairman, delved into the art of compiling personal Family Histories at our last meeting in September, speaking confidently from his expert knowledge and experience of the subject, making it fascinating and engaging. His title for the talk: 'You're not who you think you are!' revealed the many pitfalls that can happen in tracing your particular branch of the family tree, and how easy it is to be linked to the wrong branch. Bert continues, as a hobby, to help people on request, find their family tree and present the finding in either book form or on a CD; and one such person was presented with their red book at the end of the talk – very impressive! After refreshments that afternoon we were also informed about the 'Love in a Box' charity of which many will have heard of or, been involved in, which treats children in underprivileged situations overseas with gift boxes at Christmas time. Next month – Tuesday October 1<sup>st</sup> at 2pm in the Village Hall – we will receive a representative from the Operation Sunshine charity, who actually uses a site in Capel-le-Ferne to pack their containers for shipping abroad; I'm sure this will also be a very interesting and informative presentation. It would be good to see more of our members supporting these times together. To prepare us for Remembrance Day in November, our subject will be 'Commonwealth War Graves Commission' and of course our December get together will have a certain Christmas flavour. A 2014 Programme is in the process of being finalised and we should be able to print this for you very soon. Sally still has several tickets in hand for the Rochester Cathedral Thanksgiving Service on Thursday October 17<sup>th</sup> so please contact her on 250144 or see her at our next meeting. Transport there will be arranged according to the numbers going on the day.

# Stephen Huxtable Garden Services

- Private and commercial garden and grounds maintenance
- Grass cutting, Hedge cutting, Garden clearance, Turfing.
- High quality fencing supplied and erected

**Free estimates**

**01303 891720**

**[www.shgardenservices.co.uk](http://www.shgardenservices.co.uk)**



## TaxClever

Your Local Taxation Specialists



### Tax Return to do?

*Beat the rush and avoid late penalties!*

*Get it done now! - Special Autumn Rates*

Call **01303 271309** or **07551 985204**

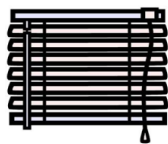
[www.taxclever.co.uk](http://www.taxclever.co.uk)

*16 Yrs as an HM Tax Inspector, now at your service*



### FITTING CREATIONS

**BLINDS – CURTAINS – SHUTTERS**



**Friendly Family Business  
Local to you**

**01303 894882    07506 144427**

[www.fittingcreations.com](http://www.fittingcreations.com)

[info@fittingcreations.com](mailto:info@fittingcreations.com)

**COUNTRYstyle**  
GROUP



save £££s on  
**skip hire**

- 4, 6, 8 & 12yd Skips    ➤ Same Day Delivery / Collection
- Competitive Rates    ➤ Committed to Recycling
- Permits Arranged    ➤ Domestic & Commercial

Call us today on **01622 611940**  
[www.countrystyleskips.co.uk](http://www.countrystyleskips.co.uk)

### CAPEL ACTIVE RETIREMENT ASSOCIATION

***Our next meeting is on  
Tuesday October 1<sup>st</sup> 2013 at 2pm  
in Capel Village Hall  
a presentation from  
OPERATION SUNSHINE***

## PLASTERING

**Fully Insured**

**All Aspects of Domestic Plastering,  
Drylining, Coving & Rendering  
Tidy, Friendly & Reliable.**

**For a free quote contact:  
Luke Holness**

**Mob: 07570 782216**

**Tel: 01303 255679**

### DO YOU NEED AN ELECTRICIAN? LOCAL, RELIABLE, AFFORDABLE

- Rewires
- Garden Lighting
- New Circuits
- No job too small
- Free quotations
- Consumer unit changes
- Additional sockets
- Fire & Intruder Alarm
- All your electrical needs
- Insurance backed work



**ElectricHall Ltd**

**Tel: 01303 647131    Mobile: 07980 448796**

**E mail: [info@electrichall.co.uk](mailto:info@electrichall.co.uk)**

**We are a local, fully insured,**

### TO AND FRO CARS



**AIRPORT TAXI SERVICE - GOING ON HOLIDAY?  
CAPEL RESIDENT PROVIDES EXCELLENT  
TRANSPORT IN A MODERN ESTATE CAR FOR YOUR  
COMFORT REGISTERED IN SHEPWAY, FULLY  
INSURED**

**CALL - 07776040858**

**OR E-MAIL - [toandfrocars@gmail.com](mailto:toandfrocars@gmail.com)**

**GET A QUOTE**

**ALL UK & EUROPE DESTINATIONS – AIRPORTS -  
CITIES - PORTS - RAILWAY STATIONS**

## **CAPEL EVENING W.I.**

Hello everyone, another month gone by and one nearer to Christmas. We have had an absolutely marvellous summer and hope that everyone was able to enjoy the sunshine one way or other.

September is Capel-le-Ferne Evening WI's Birthday Meeting month and our strength has allowed to reach the heady heights of 53 years, although it is comparatively young compared to a lot of other WIs. Let us hope we can continue to grow and keep going for considerably more years to come. It was decided that we would let our ladies sit back and have someone else to organise the catering for the evening and we have to thank Cherry Leppard and her team for putting on such a delicious spread. So thank you Cherry.

Our Speaker for this September's meeting was **Judi Knight on Wartime Fashions**. Judi came dressed in clothes that would have been worn in the wartime including matching lisle stockings, shoes and a hairstyle of the period. She gave a very informative talk on how women had to make do and mend or adapt existing garments into something completely different. Judi explained how the 'coupon' system worked. It was amazing how long one had to save up their coupons in order to buy something for a special occasion. If you were able to get hold of parachute silk, then one could make posh underwear, although it was usually very see through. She also told us that parachute silk came in various colours depending what was in the containers that were at the end of a parachute. It might have been white, yellow or orange. Judi brought with her various pieces of authentic clothing to show us and it brought back a few memories for our ladies. Our competition was a 'Wartime Memory' and Sheila French came first with a brooch made from a piece of submarine. Well done Sheila. Christine May gave the Vote of Thanks. We all then enjoyed the delicious spread of food. Our entertainment for the evening was 'Call my Bluff' which was very amusing with each table trying to guess which member of the 'Team of Three' was either telling a 'True or False' statement. It was very funny at times when there was a great debate around each table as to which was which.

Our October meeting is **Mr D Wilks and his talk is on Amazonia to the Andes**. The competition is 'An item beginning with 'E'. So we look forward to seeing all our ladies there and if there are a few new ones about then come along and join us. You will be made most welcome.

We had our 'Wit & Wisdom' on 14<sup>th</sup> September. I would like to thank everyone who came and helped to boost our WI funds, especially everyone who helped to set up the hall and a big thank you to the husbands who also helped with the heavy tables. We hope you enjoyed the Quiz and that it was not too taxing for everyone. Don gives his apologies for not being able to produce the final round, 'The Music Round' due to technical difficulties and hopes that nobody was too disappointed.

**Another note for your diaries! The next WI Bingo Evening is Friday 25<sup>th</sup> October 2013 so eyes down get ready, get set for a good evening with a dose of 'Scattergories' in between. This will be held at St Radigunds Church Hall at 7.00p.m.**

As usual our ladies have a busy month ahead of them. Darts, Craft, Scrabble, Home Economics, Book Share etc.

Look forward to contacting to you all again next month.

### **Capel le Ferne Evening Women's Institute - More information from Jayne Stone 211480**

Meetings are held in the Village Hall, starting at 7.30pm. Visitors are welcome and may attend up to 3 meetings without becoming members.

**8th October:** WI Meeting - Mr D Wilks - Ecuador, Amazonia to the Andes

### **Need to register with a GP?**

White Cliffs Medical Centre, 143 Folkestone Road, Dover, CT15 9SG, are able to register patients living in the Capel-Le-Ferne area. We offer all you would expect from a GP practice, with a number of extra services such as Ultra Sound, Physio and other private services; to name but a few, all with the added benefit of being delivered from our fabulous new state of the art premises, staffed with male and female GP's, 2 nurses and 2 Health Care Assistants. If you wish to register please contact us by either:

Phone: - 01304 201705. Or please feel free to pop in to the

surgery. **Drs Premnath and Partners**



## **CAPEL -LE-FERNE W.I**

### **BINGO EVENING**

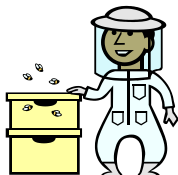
**FRIDAY 25<sup>TH</sup> OCTOBER 2013**  
**ST RADIGUNDS CHURCH HALL**

**7.00P.M**

**'Scattergories'**

**will be played during the interval.**

**Come along, join in the fun and try your luck at winning a prize.**



## **BEE AWARE!**

Dover District Beekeepers Annual Honey Show is coming up so why not come and join us on Saturday 19th October at the wonderful hall at Beechgrove, Nonington - home to the Bruderhof Community.



It's a great afternoon for adults and children alike with displays of live bees at work in a special observation hive (weather permitting), microscopes to get a close up of bees and their pests, hive and equipment displays and of course lots of different honeys. Creams, lip balms, soaps and honey, all locally produced, will be on sale.

Entry is free with refreshments available to purchase, so come along and join us to find out what beekeeping is all about.

Don't forget! Saturday 19th October - doors open at 2.30pm at Beechgrove, Nonington CT15 4HH

**Chris Holdstock - Show Secretary**

USEFUL CONTACTS INCLUDING ACTIVITIES & CLUBS	CONTACT NAMES	TELEPHONE NUMBER
Police Community Safety Officer	Mrs Gretel May	07772226209
Community Warden	Mr Dave Bish	07811 271020
Parish Council, Chairman	Mr Clive Goble	01303 240566
Parish Council Clerk	Mrs Maureen Leppard	01303 259564
Webmaster	Mr Peter Jones	01303 248149
Chairman, V. H. Committee	Mrs Jayne Stone	01303 211480
Vice Chairman “	Mr Jerry Watson	01303 258865
Secretary “	Mrs Cherry Leppard	01303 255114
Treasurer “	Mrs Jenny Carter	01303 250928
Lettings Secretary “	Mrs Joan Woodsford	01303 252354
Minutes Secretary “	Mr Gerry McCann	01303 850332
Maintenance “	Mr Derek Jeffrey	01303 259842
Trustee “	Mrs Jenny Barraclough	01303 245399
Trustee “	Mrs Julie Young	01303 259734
Trustee “	Mr Mike Stone	01303 211480
Trustees “	Mrs Sue McCann	01303 850332
100+ Club	Mrs Wendy Leeming	01303 259120
Farmers Market	Jenny & Cherry	245399/ 255114
Boot Fairs	Mrs Wendy Leeming	01303 259120
Village Hall Quiz Sheets	Jenny & Cherry	245399 / 255114
Table & Chair Hire	Mrs Jayne Stone	01303 211480
Noticeboard (£1 per month)	Committee Members	
Divas Dance	Miss Rebecca Uden	01303 893650
Brownies	Mrs Sandra Sharpe	01303 241767
Guides	Miss Rachel Chandler	01303 210702
Youth Club	Mr Simon Withey	07860803767
Playgroup	Mrs Alison Cloake	07977 838609
Judo	Mr Colin Carrot	09850 548769
Capel Active Retirement Association	Mrs Sally Solly	01303 250144
Short Mat Bowls	Mrs Ros Chandler	01303 255862
W.I.	Mrs Jayne Stone	01303 211480
Fit Friends - Pilates	Mrs Pam Vivien	01303 244322
Keep Fit	Mrs Karolin Taylor	01303 246887
Zumba Fitness	Tuesday&Thursday6pm.	07411966582
Capel Ramblers	Mr Bob Mothersele	01303 250931
Gardeners Association	Mr Gerald Harman	01303 255661
Bridge (Sunday & Tuesday)	Adrian & Judy	01303 245521
Bridge (Fridays)	Mr Bob Jones	01233 756362
Art Group, St. Radigunds Church	Mrs Susan Dootson	01303 243508
Remote Control Car Club	Mr Derek Jeffrey	01303 259842
St. Radigunds Players & Choir	Mr Jerry Spillet	01303 242146
Twinning Association	Mrs Jayne Stone	01303 211480
St. Radigunds Church	Rev. Brian Williams	01303 243784
St.Radigunds Church Hall Bookings	Steve Lennard	01303 670445
Capel Baptist Church	Mrs Gill Cooper	01303 251086
Welcome to Village Letter	Mrs Debbie Catling	01303 251525

Please let me know if I've left anyone/anything out!  
Or if any details are incorrect - Jenny 01303 245399

### Simpson Aerials

Your local aerial installer  
We install, repair and tune all TV and Radio Aerials and Satellite, including Freeview, Freeview Plus, Freesat and Freesat plus. Est: 1988



Call Peter on



**01303 250360 or 07971807150**



### Mobile Library Every Tuesday

Old Dover Road -

10.25am - 10.40am

Victoria Road -

10.50am - 11.20am

Reece Adams House -

11.25am - 11.55am

Village Hall -

12.00 noon - 12.30pm



### CAPEL-LE-FERNE WEBSITE

[www.capel-le-ferne.org](http://www.capel-le-ferne.org)

Please could all Clubs & Societies in the Village, regardless of where and when they meet, send regular updates plus contact information to our Webmaster. Also all forthcoming events, in fact any information of interest in the village, i.e. local events, history, local celebrities, family searches etc. The website is proving very popular, receiving many enquiries. Current information is important and it cannot be updated without your help. It is a mine of information, especially for anyone new to the village. All event posters are placed on there to be downloaded by anyone wishing to display one. If you have ANY photographs of Capel, your club, events, history, the area etc. please forward them for inclusion in the Gallery of Images. Contact Peter at:

28 Helena Road, Tel: 01303 248149 Email: [webmaster@capel-le-ferne.org](mailto:webmaster@capel-le-ferne.org)

#### To contact us

Call anonymously on **0800 555 111** or fill in the online 'Giving Information' form on our website. Visit [www.crimestoppers-uk.org](http://www.crimestoppers-uk.org)

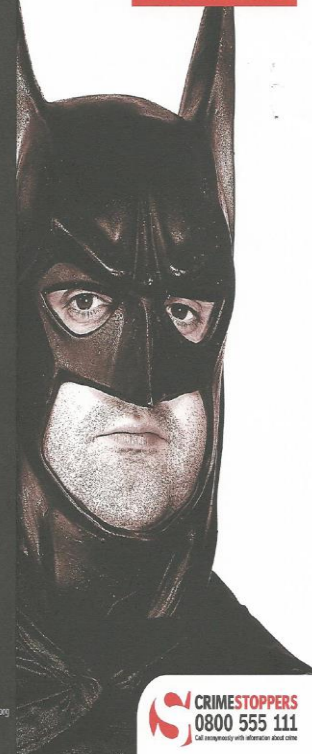
#### To help us

As an independent charity, Crimestoppers rely on fundraising activities and individual donations. If you'd like to support us or become a volunteer, please visit the 'Support Us' section on [www.crimestoppers-uk.org](http://www.crimestoppers-uk.org)

Crimestoppers Trust

PO BOX 324, Wallington, SM6 6BE  
T: 020 8835 3700 F: 020 8835 3730 [www.crimestoppers-uk.org](http://www.crimestoppers-uk.org) [www.faircity.org](http://www.faircity.org)  
Crimestoppers is a registered charity

**FIGHT CRIME  
WITHOUT REVEALING  
YOUR IDENTITY**



**CRIMESTOPPERS**  
**0800 555 111**  
Call anonymously with information about crime

Not for household or garden waste!



Thank you  
for your help!





**Computer Problems Solved**  
Tel: 01303 241325 Mob: 0796 8129 902  
Usual Fee **£35**  
\*PCs, Laptops, Tablets setup with Internet, Email, Security & Office Programs – Ring for new PC prices  
\*PC / Laptop upgrades and repairs  
\*Business Web sites built & hosted from £10 pm  
\*Tuition available by a qualified tutor  
Ring Tony for a fast and friendly service  
See [www.kimcomputers.co.uk](http://www.kimcomputers.co.uk) for details

[www.villageyak.co.uk](http://www.villageyak.co.uk)

## CAPEL VEHICLE SERVICES

All makes of cars serviced and repaired.  
MOT repairs, mechanical and welding.  
Tyres, Exhausts, Batteries & Towbars  
Supplied and fitted  
Competitive rates. No VAT.

*Friendly efficient service*

Call John Horne 01303 255894 or email:

[Johnhorne@amserve.net](mailto:Johnhorne@amserve.net)

Local free collection and delivery available if required  
MOTs

**Roger Crowther**  
rwcrowther@btinternet.com  
Experienced and fully qualified Handyman  
For free estimate tel.  
**01304 822649**  
**07543 852682**  
All jobs, large or small.  
5% discount for OAPs.  
References available.



Carpentry, painting & decorating, tiling, misc. electrical and plumbing works, garden structures, odd jobs and repairs.

## Absolute Security LOCKSMITHS

Opening hours: Mon-Sat 9am – 6pm

No call out charge – 24 hours, 7 days

All types of locks, open-supplied-fitted

Boarding Service - Emergency Repairs.

Key Cutting. Domestic & Commercial. Shutters, Grilles, Bars, Safes. Video/Audio Entry Systems.

Fitting Service Available.

**01303 210057 / 07887652507**

**G B Haworth**



**Painter & Decorator**

**Interior & Exterior**

**Free Estimates Capel - 244206**

### GRAPEVINE ADVERTISING from 1<sup>st</sup> April 2013

This space could be advertising your commercial /business venture or, non-village organisation event.

Size 9cm x 3.5cm £ 9.50      Size 9cm x 7cm £14.50

Size 9cm x 13cm £20.00.      Size 20cm x 13cm £36.00 (½ page)

Payment in advance. Cheques payable to

Capel-le-Ferne Parish Council

For further details contact Parish Clerk at 39 Victoria Road,  
or Tel: 01303 259564. Email: [maureen.leppard@btinternet.com](mailto:maureen.leppard@btinternet.com)



- All types of paving (driveways, patios, pathways)
- Full driveway & dropped kerb packages
  - Dropped kerbs
  - Bricklaying & retaining walls
  - Tarmac & concrete
- All types of groundworks including foundations, drainage, etc

Contact us for a free quote

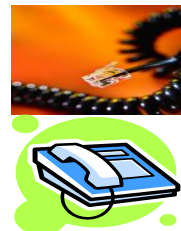
T: 01303 253437 M: 07788 146673

[capelgroundworks@btinternet.com](mailto:capelgroundworks@btinternet.com)

[www.capelgroundworks.co.uk](http://www.capelgroundworks.co.uk)

## Do you ....

1. Need an extra telephone point in your house?
2. Need to relocate your existing telephone points to a more convenient place?
3. Need network cabling or system installation for your business?



For excellent rates call **JOHN @ j.waller services.**

Fully qualified ex BT engineer with 12 years experience.

07766 068100    01304 225420

[www.j-wallerservices.co.uk](http://www.j-wallerservices.co.uk)

Half the price of BT OPENREACH ..... GUARANTEED

### Recycling/Waste Collection Dates:

Food Waste, Rubbish & Green Waste

**Friday, 4<sup>th</sup> and 18<sup>th</sup> October.**

Food Waste & Recycling

**Fridays, 11<sup>th</sup> and 25<sup>th</sup> October.**

**Missed Bins** - Very occasionally your bin may not be collected.

Therefore if your refuse or recycling was out on the kerbside before 7am on your collection day please call 01304 872428 or email [waste@doover.gov.uk](mailto:waste@doover.gov.uk) and they will come back for it.

Please note that you are required to report the missed bin no later than one day after your collection.