

GRAPEVINE

Capel-le-Ferne Village Newsletter
MAY 2013 - ISSUE NO: 215



Capel-le-Ferne Gardeners' Association

Our annual plant sale takes place on

**Saturday the 4th May at the Church in
Albany Road from 10am.**

There will be lots of nursery grown plants and baskets etc., and an opportunity to have a cuppa and cake.



Friday May 10th 2013 ANN FINNEY presents The Music & Life of Glen Miller

in St Radigunds Church, Albany Road, Capel,
at 7.30pm (doors open at 7)
Tickets £5 available from
John Oliver 01303 251403



Neighbourhood Watch



**CAPEL LE FERNE
NEIGHBOURHOOD WATCH RELAUNCH
ON 11TH MAY 2013 - 2.00pm UNTIL 4.00pm
Village Hall, Lancaster Ave, Capel-le-Ferne
Free tea and coffee**

This has been organised as an informal session for residents to have an input into a new Neighbourhood Watch Scheme in Capel. Several guests, including representatives of a successful scheme elsewhere, will be in attendance. A variety of organisations associated with safety and security have been invited to be available to answer questions and concerns in their field of expertise. (*More details on page 9*).



Capel-le-Ferne Youth Club Quiz Evening @ Capel School Hall Saturday, 11th May From 7pm

For further details please contact the Chairperson,
Simon on 07860803767



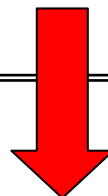
CAPEL-LE-FERNE PRIMARY SCHOOL PARENTS' & FRIENDS' ASSOCIATION



Weekdays, between 8.30am and 8.45am, before 21st May
We are raising funds through recycling!

'Phil' the Bag™

See Page 14 for more details & information



INSIDE CONTENTS

Church Benefice	Page 2
Village Hall Management Committee	Page 3
Capel Baptist Church	Page 5
Farmers Market	Page 7
Parish Council	Page 8
Community Recreation Project	Page 9
Neighbourhood Watch	Page 9
Battle of Britain Memorial Trust	Pages 12 & 13
Primary School PFA	Page 14
Dover District Council Energy Deal	Page 14
List of Contact Details	Page 15

*If you know the details of your event in advance, please let
Parish Clerk know so organisations avoid booking same date*

"WHAT'S ON" IN CAPEL-LE-FERNE

4 th May	Gardeners' Association Plant Sale 10am (page 5)
10 th May	Ann Finney on Glen Miller @ Church (Page 2)
11 th May	Neighbourhood Watch meeting 2pm-4pm (page 9)
11 th May	Youth Club Quiz Evening @ the School 7pm
14 th May	WI meeting: Makatono
8 th Jun	Folkestone Airshow (Capel will be taking part!) (Page 12 & 13)
11 th Jun	WI Meeting: Origami
14 th Jun	Al Jolson- the Man and his Music (Page 2)
27 th Jun	Youth Club AGM @ Village Hall - 7.30pm
6 th Jul	Capel School Summer Fayre
9 th Jul	WI meeting: Dungeness to Diamonds
12 th Jul	Musical Theatre 50's to present day (Page 2)
12 th Jul	Capel Twinning Association - BBQ
14 th Jul	Battle of Britain Memorial Day (Page 12)
27 th Jul	WI - Afternoon Tea Party in Church Hall
10 th Aug	Agape Gospel Choir/Jazz Group (Page 2)
13 th Aug	WI Meeting: Mercy Ships
1 st Sept	Garage Sale Safari (page 3)
10 th Sept	WI Meeting: Wartime fashions
13 th Sept	Dr John Ray - The Battle of Britain (Page 2)
14 th Sept	WI Wit & Wisdom Evening (Page 10)
15 th Sept	Battle of Britain Day Service (Page 12)
28 th Sept	Youth Club Quiz Night at Capel School at 7pm.
8 th Oct	WI meeting: Ecuador, Amazonia to the Andes
27 th Oct	Indoor Boot Fair
2 nd Nov	Christmas Craft Fair (page 3)
8 th Nov	Capel School Firework Display
10 th Nov	Remembrance Day @ Battle of Britain Memorial
1 st Dec	Indoor Boot Fair
7 th Dec	Capel School Christmas Fayre
26 th Jan	Indoor Boot Fair
23 rd Feb	Indoor Boot Fair
30 th Mar	Indoor Boot Fair

Benefice Services for MAY 2013

Date	Alkham	Capel	Hougham
Sunday 5th	Evensong 6:30pm	Sung Eucharist 9.30am	Worship Tog'r 11am
Thursday 9th	Ascension Day Eucharist 7pm		
Sunday 12th	Joint Rogation Day Service at St Radigund's Abbey 10.30 am		
Sunday 19th	Family Service 11am	Evensong 6pm	Sung Eucharist 9.30am
Sunday 26th			Benefice Eucharist 10am

According to the Old Testament book of Genesis, God decided in the beginning that it is not good for man (OK – humankind, then) to be alone. So he made animals, and brought them to the man to see what he would call them. No surprise, perhaps, that so many of us appreciate the comfort and companionship that pets bring.

I found myself thinking of that just the other day when, towards the end of a busy afternoon, I took our new cat to the vet for her vaccination. I was wearing my collar. The receptionist gave me a bit of an odd look when she saw it, but said nothing.

We sat down and waited and waited. Had they forgotten us? I glanced across at the reception area. A woman was just leaving.

Receptionist, nurse and vet were talking together quietly – I guessed that something sad had happened. For a moment, I wondered – being a clergyman, would I be asked to pray over someone's pet? What would I say?

Then, finally, it was our turn. The vet apologised for the delay, and explained that an apparently healthy cat had suddenly suffered a fit, and the owner had rushed it to the surgery. It hadn't been old or obviously sick, and they were all shocked and upset at having been unable to save it.

We chatted for a while. As with people, the hardest part of pet ownership comes with having to say goodbye.

Jesus once said that even though five sparrows are sold for two pennies, not one is forgotten before God. So if I *were* asked, I would say that I believe that God loves our pets at least as much as we do.

In the same breath, Jesus also said that *we* are worth more than many sparrows... *Brian Williams*

Capel-le-Ferne Church Hall Fund

We have now improved the lighting in the Church Hall and the next project is to improve the heating before the onset of next winter. The April talk by Carl Spencer on Where Did Swing Come From was excellent and his knowledge of the early exponents of Jazz and Swing is second to none on this Country. **The next talk on Friday May 10th will be by Ann Finney** who will be playing music by Glen Miller and giving information about the man, his life, and his music. Glen Miller remains one of the most popular big bands and I am hopeful of a good attendance. Please let me know if you plan to join us, it always helps to know numbers for catering for tea / coffee and biscuits and you can purchase your tickets in advance or pay at the door if you are not sure if you are able to attend. Tickets as usual are £5 and all profit goes towards the next project in the hall.

All are welcome!

June 14th - David McCarthy UK Rep for The International Al Jolson Society will present Al Jolson- the man and his Music-The Life and Music of the World's First Super Star - David gave us an introduction to Jolson last year which was an intriguing eye opener to many and he has been invited back due to many requests to hear more of Jolie.

July 12th - Keith Radford - Back again to give us his latest talk **Musical Theatre from the 50's to the present day.**

This talk will particularly appeal to those who come on my theatre trips as he will be covering many of the shows we have been to over the last 13 years.

August 10th (Saturday) - The Folkestone Agape Gospel Choir and Jazz Group.

September 13th - Dr John Ray on The Battle of Britain

Tickets are available from me. **phone 01303 251403 or e mail to john.e.oliver@talktalk.net**

John E Oliver, Chairman - Capel Church Hall Fund

Online Information

Consultation on Draft Policy

Statement of Principles Gambling Act 2005 - 2013-2015

<http://www.dov.gov.uk/Business/Licensing/Gambling/About-the-Act.aspx>

Public Rights of Way Vegetation Clearance

KCC PROW & Access Service

Further savings in 2013! Reports any issues online at

www.kent.gov.uk/explorekent

Kent County Council Elections – Thursday, 2nd May

http://www.kent.gov.uk/your_council/how_the_council_works/elections.aspx

Southern Water sets out strategy for next 25 years

www.southernwater.co.uk/haveyoursay

TO AND FRO CARS



AIRPORT TAXI SERVICE - GOING ON HOLIDAY?
CAPEL RESIDENT PROVIDES EXCELLENT
TRANSPORT IN A MODERN ESTATE CAR FOR YOUR
COMFORT REGISTERED IN SHEPWAY, FULLY
INSURED

CALL - 07776040858

OR E-MAIL - toandfrocars@gmail.com

GET A QUOTE

ALL UK & EUROPE DESTINATIONS – AIRPORTS -
CITIES - PORTS - RAILWAY STATIONS



CAPEL-LE-FERNE VILLAGE HALL MANAGEMENT COMMITTEE

Registered Charity Number 281.786.

PROVIDING SERVICES FOR OUR COMMUNITY

All this information and more can be found on our website www.capel-le-ferne.org

Please help us keep this up to date by contacting our Webmaster

Committee Meetings are held at the Village Hall on the First Tuesday of every month at 7.30pm.
A REPRESENTATIVE FROM ALL HALL CLUBS & USERS, IS REQUESTED TO ATTEND MONTHLY MEETINGS
THE ANNUAL GENERAL MEETING WILL BE HELD ON TUESDAY, 26th NOVEMBER 2013

RECYCLING - INSIDE THE HALL

Boxes are provided for: Unwanted shoes for charity, Used Stamps for Moorfields Eye Hospital & Hearing Dogs.

We now have another contact for Plastic Lids/Bottle Tops – so can now begin collecting again.

Please place the above in the relevant boxes provided.

CONTINUOUS EVENTS

Quiz Sheets:- Available (£1 per sheet) at the Farmers Market or from Cherry Leppard, 29 Albany Road, first prize £25. The answers are placed in the Grapevine and on the Website.

100+ Club:- £12 per year, your number is placed in a draw, every month for 1st Prize £25, 2nd £15, 3rd £5. These DOUBLE in December! The draw will take place at the Committee Meeting on the 1st Tuesday of each month. Contact Wendy 259120 for further information

Farmers Market:- Tuesdays 10 a.m. to 12.30 p.m. Approximately 20 stalls selling local produce every week.

FUND RAISING EVENTS

INDOOR BOOT FAIRS 8 a.m. to Noon

27th October, 1st December 2013 &

26th January, 23rd February, 30th March 2014.

Tel: Wendy 01303 259120 for more information.

CHICORY TIP 27th April 2013

GARAGE SALE SAFARI – 1st September

CHRISTMAS CRAFT FAIR – 2nd November

100 CLUB WINNERS – April

1st 36 Richard Salmon

2nd 31 Margaret Francis

3rd 37 Joan Waghorn



CAPEL-LE-FERNE

GARAGE SALE SAFARI

(100 GARAGES BOOKED LAST YEAR!!)
SUNDAY 1st SEPTEMBER
10 A.M. TO 4 P.M.
 Buy your 'MAP' for 50p from the Village Hall, Lancaster Avenue to find all the Garage Sales taking part.
A BOOT FAIR WITH A DIFFERENCE!
Refreshments available at Village Hall & Church Hall
 Tel: 01303 255114 or visit our website for further information
www.capel-le-ferne.org



CAPEL-LE-FERNE
 VILLAGE HALL MANAGEMENT COMMITTEE
 Registered Charity Number 281.786

CHRISTMAS CRAFT FAIR

SATURDAY
2nd NOVEMBER
10 A.M. TO 3.00 P.M.

large variety of stalls
 a chance to buy locally produced christmas presents

Tombola * Refreshments

Admission:
 By Donation to Village Hall
 Tel: 01303 258865 for further details if required.
www.capel-le-ferne.org



To report any concerns you have call Trading Standards Advice and Education, Telephone 08454 040506.

Email tsadvice@kent.gov.uk. www.tradingstandards.gov.uk/kent

If you would welcome notification of the Trading Standards alerts received by the Parish Council, please send your email address and confirmation to maureen.leppard@btinternet.com.

You will then be entered into the Parish Clerk's database and they will be forwarded as and when received.

POSTAL OFFICE SERVICES

In the Village Hall, Postal office services continue to be available on Farmers' Market days. This is run entirely by volunteers - our thanks to Rachael and Jayne - it is not a business and so a complete range of Post Office services cannot be offered.

However, there is much that can be done there. Forms for various documents, such as passports, EHIC & mail redirection are available. Letters and parcels can be weighed and measured and suitable stamps, custom forms are on sale. For parcels there is a weight limit of up to 4 kg. If there is anything special you need just ask. There is a range of hand-made cards for most occasions.

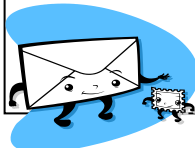
In April the cost of some postage stamps increased; the major change though was the service for parcels. Parcels now go by size and weight:

Small 45cm x 35cm x 8cm up to 2.5kg. Medium 61cm x 46cm x 46cm up to 20kg.

For larger - contact the Post Office direct.

The Post Office also offers guaranteed and confirmed delivery.

These services cannot be offered at the Tuesday morning Farmers' Market



The Valiant Sailor

New Dover Road – Tel 01303 252401 www.valiantsailor.com



Food served 7 days a week. Open daily from 12:00 hours.

Real Ales, Fresh Fish including **catch of the day** delivered daily. Our 34 cover separate restaurant serves a range of freshly prepared meals using **locally sourced produce** along with an excellent Roast every Sunday. Good selection of wines available. All diets i.e. gluten-free catered for on request.

Networking Breakfasts, Office/Private Parties, Walkers, Runners, Groups, Wedding Anniversaries, Birthdays, Wakes and Bar/Batmitzvahs catered for.

Large **car-park** and safe **Children's play area**.

Forthcoming events

Wed 17 Apr Open Mike Night – 8.00pm.	Sat 20 Apr Live Music - Electric Monks – 8.30pm
Sun 21 Apr Live Music - Cultured Pearl – 2.00pm.	Tue 23 Apr St. George's Day
Wed 24 Apr Quiz Night – 8.00pm.	Sat 27 Apr Live Music – Goodbye Eric - 8.30pm
Tue 30 Apr Tune Session – 8.00pm	Sat 04 May Live Music - Jerry 'C' – 8.30pm
Sun 05 May Live Music – 8.30pm.	Fri 10 May Over 40's Singles night – 8.00pm.
Sat 11 May Live Music – Gary Dean – 8.30pm.	Wed 15 May Open Mike night – 8.00pm
Sat 18 May Live Music – Barry Goss – 8.30pm.	Sun 19 May Live Music - Cultured Pearl – 2.00pm
Sat 25 May Karaoke with Zoeoke – 8pm.	Sun 26 May Live Music – Great Mates – 8.30pm
Tue 28 May Tune Session – 8.00pm	Wed 29 May Quiz Night – 8.00pm

Management and Staff look forward to meeting you.



Daily Mail: Recycling Headlines **A Consistent Response from the 13 Kent Councils**



Kent councils thank residents for recycling - and Reassure we're 'on the case' that recyclates get recycled

The 13 Kent councils wish to thank residents for their solid support for recycling over many years. The best recycling performance comes when councils provide convenient recycling services residents are able and willing to use. It's because of that solid connection between residents and councils that Kent is recycling over 40% of household materials (by weight). Kent's performance on 'landfill' is also good: only 22% of household waste went to landfill in 2012/13 compared to a national average of over 40%. Performance is set to be even better in future as the amount of Kent's household waste going to landfill is set to be no more than 5% by 2020 - with recycling performance going above 50%. This recycling performance is already true in several councils across Kent, with more set to join them in the near future.

However, whilst Kent's performance is currently good, the 13 Kent councils recognise residents might hear newspaper headlines from time to time that raise questions deserving of answers. The Daily Mail headlines on Saturday 6th April served to raise some important issues as much of concern to councils as they are to residents about recycling activities. The Kent councils agree that more needs to be done to ensure the recyclates councils pass to private sector companies do, indeed, end up being recycled - and we're pleased the Daily Mail has highlighted that shipments of recyclates abroad need to be more rigorously checked as to their quality and end destinations. That checking job is done by the Environment Agency (EA) when recyclates in the hands of private sector companies may be prepared for sending abroad for processing. It's as much in councils' interests as it is in residents' interests to ensure the EA has the resources it needs to check the quality of recyclates destined for processing abroad. Residents and councils have a joint need to make sure the current systems of managing recyclates work well. In terms of reassurance, much of what residents recycle in Kent is processed in the UK - including in Kent itself. Where recyclates legitimately go abroad, the Kent councils are fully behind the EA in routing-out all illegal practices that do not fit with the need to produce high quality shipments of recyclates.

More than that, all 13 Kent councils signed-up in 2012 to the national initiative led by the Resource Association called the 'End Destinations of Recyclates Charter'. Only a handful of councils across England have currently signed-up to this Charter, with only Kent and Somerset being the two areas where whole counties of councils have signed-up. This demonstrates the Kent councils' desire to be open about information about recyclates. In June 2013 the 13 Kent councils will jointly publish details of where household recyclates go once they have been passed to private sector companies. The best quality data will be possible only if the councils have the full co-operation of private sector companies involved in handling materials put out for recycling by residents. Thus, the Kent councils call for that full co-operation from private sector in preparing information for publication in June. Most importantly, Kent residents can be reassured that continuing to use recycling bins at home, bring banks in the community and the 19 Household Waste Recycling Centres remains the right thing to keep on doing. Kent residents can also be confident their councils are working hard to ensure genuine recyclates DO get genuinely recycled by private sector companies.

CAPEL BAPTIST CHURCH
Capel Street. Services 10.30am.

Speakers for MAY 2013

5th Colin Patience

12th Rev Ruddle

19th Gloria Guest

26th David Longley

ALL WELCOME TO THESE ACTIVITIES

If there are queries regarding these details,

please call 01303 251086. Gill Cooper

Please! A reminder that the public are requested not to park in front of the gates on Sunday mornings as this is a disabled access.



A warm welcome awaits you at
CAPEL BAPTIST CHURCH
 Capel Coffee Corner every
Wednesday 10.00am – 12.00noon

Crafting first Friday of
 the month

19.00hrs – 21.00hrs

And

SUNDAY WORSHIP
EVERY SUNDAY AT
 10.30am



ALL ARE WELCOME



Capel-le-Ferne Gardeners' Association

The annual plant sale will take
 place at St Radigunds Church in
 Albany Road, Capel on 4th May
 from 10 am

Despite the weather the Spring Show at the Village Hall was very good with plenty of exhibits and visitors. Thanks to all who managed to exhibit on the day.

Our annual plant sale takes place on Saturday the 4th May at the Church in Albany Road from 10am. There will be lots of nursery grown plants and baskets etc., and an opportunity to have a cuppa and cake.

The monthly meeting on 21st May at the Church Hall in Albany Road is a talk on "Wayside plants, history and Folklore" by Mrs S Scrivens. The monthly competition is for a Pot Plant Flowering.

Admission is £1.00 to include tea and biscuits.

New Members welcome, annual subscription is £4.00.

**Any enquiries about membership or activities
 call - Mr Gess Harman on 01303-255661.**

Insideout cleaning and Maintenance

Carpet and upholstery cleaning

Window Cleaning

Cleaning of debris and leaves from gutters

*Mould removal from conservatory's, fascia and
 gutters. Oven Cleaning*

3 CARPETS CLEANED FOR THE PRICE OF 2

<http://www.cleaning-insideout.co.uk/>

Call for a free quotation

01303 250392 or 07842624786

10% discount

for OAP's

A S Maintenance

Local Handyman Services



Painting & Decorating
 Plumbing
 General Household Maintenance

Tel: 01303 884942

Mobile: 07505 134 732

Email: andy@as-maintenance.co.uk

ARCHERS DECORATING

Established 25 years

For all your home decorating needs

Check out my feedback on www.check-a-trade.com

For a quote at a time that suits you, call or email me on;

01303 627 021 / 07901 767 925

Email: archers_decorating@yahoo.co.uk

Pro Services – Paul Relf Optimum Services

4 Queen's Lea, West Hougham, CT15 7BJ.

Tel: 01304 214166. Mobile: 07787 910961

Garden & Property Maintenance Services &
 Handyman

No Job too small

Projects and all types of jobs you need doing in your
 garden, or inside and outside your home.

I'm friendly, reliable, local and trustworthy.

If you would like to enquire about any job, without
 obligation, it will be nice to hear from you.

The Lighthouse Inn 111 Old Dover Road CT18 7HT

info@thelighthouse-inn.co.uk www.thelighthouse-inn.co.uk 01303 254080



Channel Views Alfresco Dining Teas Coffees English and Oriental Cuisine Breakfasts Cream Teas Sunday Roasts
Resident Pianist En Suite Rooms Dogs Welcome Function Room for Parties Weddings Wakes etc Closed Mondays

All Day Music Saturday April 27th Sam Woodhams Swing 1pm

Garry Dean and Band 6.30pm Free Entry

Sat May 25th Family Fund Raising Day for Dover RNLI with Kent Radio DJ Steve Ladner

Midsummer Opera Gala Evening Sat June 22nd 2013

Champagne and Canapés

5.30 pm on the Terrace overlooking the Channel

A Three Course Meal

Melon with Parma Ham and Cherries

Roasted Local Matured Beef with Horseradish

Baby Summer Vegetables with Lemon Vinaigrette and Buttered Potatoes

Fresh Fruit Salad with Champagne Sorbet

Italian Tenor GUGLIEMO CALLEGARI

(Flying in from Italy and making his UK Debut)

Kent Mezzo Soprano JENNIFER BRISK

Australian Soprano CHLOE ANGEL

Dress Optional

£55 PER HEAD

SPRING DRINKS PROMOTION CARLSBERG - £2.80 TETLEYS - £2.80

COCKTAILS 2 FOR 1 6-8PM

SPRING FOOD AND DRINK OFFER

Lighthouse Inn 111 Old Dover Road CT187HT 01303 254080



Tues, Wed, Thurs - Lunch and Evening

8oz (locally sourced) Rib Eye Steak, Mushrooms, Tomatoes, Peas, Onion Ring and Chips £9.95

Friday Night Curry Night - Take Away Also Available

Various Selection of Curries, Rice, Poppadom and Chutney £7.95

Sat and Sunday 9am-12pm

Buy 1 Lighthouse Breakfast Get 1 FREE!

Sunday Roast Children Under 10 Eat Free (2 per adult)

Sat April 27th Gary Dean Band 10% Food Discount

2 for1 Cocktails (6-8pm) Glass House Wine £3.00, Carlsberg £2.80, Tetleys £2.80

MANAGEMENT AND STAFF LOOK FORWARD TO SEEING YOU

FARMERS MARKET NEWS - FIND US ON FACEBOOK!

The 10th Anniversary Event, which will be held on 23rd April – St. Georges Day, also coincides with our (as pointed out to us!) 500th Anniversary, as we are a weekly market! A report will be in the next Grapevine as the dates for the deadline overlap.

I am sure we will have a great day.

We have been asked to attend the Shepway Airshow Event at the Battle of Britain Memorial on 8th June, when we hope some of our stallholders will be able to attend.

We continue to keep busy, and you may have noticed that some of our stalls have moved – that is to keep you guessing, but also for other reasons!

A Newsletter is sent out to many interested parties, and is also added to our FACEBOOK page. If you would like a copy, please email: capelfarmersmarket@yahoo.co.uk.

We are now looking for help with setting up and clearing away, and help in the refreshments too, on a rota basis. If you feel you could help us in any of the above way, please contact Jenny or Cherry.

Please note: The products for sale are produced (in the majority of cases) by the stallholder, in Kent, unless clearly marked otherwise. Our present products are:- Fish, Meat, Eggs, Preserves, Jams, Honey & Pickles, Delicatessen, Smoked Fish, Meat & Cheese, European, South African & Italian dishes, Bread, Cakes & Pastries, Olives, Vegetables, Fruit, Sweets, Ice cream, Fruit Liqueurs, Pet Food, Plants and a few Crafts. We are thrilled that James Taylor Photography has returned, after a very long illness, with his portable studio for portraits, passport, driving-licence photos etc., printing your holiday snaps etc. in the small hall.

We should point out that we ensure our producers hold the relevant certificates i.e. a public liability insurance and, where necessary, health and hygiene certificate and kitchen registration documents



CAPEL-LE-FERNE Youth Club



Every 1st and 3rd Thursday in the month from 7.30pm to 9.30pm.

Please come along and your first evening is free!

Please ensure you collect your children from the hall, not the Car Park, even on light evenings.

We are still looking for additional helpers.

Any help will be gratefully received. Please see one of the Youth Club helpers for more details.

Any issues/queries

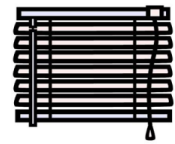
Please contact the Chairperson,

Simon on 07860803767 and find us on Facebook to keep up to date with all info about Capel Youth Club.



FITTING CREATIONS

BLINDS – CURTAINS – SHUTTERS



**Friendly Family Business
Local to you**

01303 894882

07506 144427

www.fittingcreations.com

info@fittingcreations.com

Dover District Council - Advertising Planning Applications

As of 1st April 2013 relevant planning applications will now ONLY be advertised in the Kent on Sunday. You can, however, view the weekly lists and register to receive update notifications online via Dover District Council website.

Follow Link: <http://www.dover.gov.uk/Planning/Planning-Applications/Advertising-Planning-Applications.aspx>

- **Weekly Planning Lists**
- **Register to receive update notifications**

PLASTERING

Fully Insured

**All Aspects of Domestic Plastering,
Drylining, Coving & Rendering
Tidy, Friendly & Reliable.**

**For a free quote contact:
Luke Holness**

Mob: 07570 782216

Tel: 01303 255679

★★★★★

WWW.SHEPWAYDRIVINGSCHOOL.COM

07772 775564

HYTHE, FOLKESTONE, DOVER
& ALL SURROUNDING AREAS

SPECIAL INTRODUCTORY OFFER
£80 FIRST 5HRS*
*NORMAL RATE ONLY £21 PER HOUR

CAPEL-LE-FERNE PARISH COUNCIL

Summary of some items discussed at meeting on Tuesday, 16th April.

• **The meeting received 1 request to address the Council:** This related to the condition of Old Dover Road, by way of parking on verges, lack of white lines, drainage and road surface, use of parts of cliff top areas and junction of Winehouse/Old Dover Road safety aspect, together with wildlife consideration on any forthcoming developments. Resident requested "notice of management and maintenance programmes, together with a monitoring regime". Chairman reported, all these issues were the responsibility of Kent County Council Highways Division and the Parish Council could support the concerns and the Clerk would write to Highways on his behalf to convey concerns and invite some answers to the queries raised. • **Refurbishment by Dover District Council of the Historic Noticeboard** at Playing Field reported to be ready for installation and District Councillor Scales would make enquiries on date this would be carried out. • **Coronation Day/Unveiling Q E II "Fields in Trust" plaque** – a sub-committee of councillors was formed to organise day. Date agreed 26th August – further details to follow. • **Crime Report from PCSO Gretel May:** There has been a burglary in the village this month and access was gained through an open window, residents please close windows when you leave your houses. The incident with the young male in his car was not related to any one in Capel, it was just where the incident happened so please be reassured - I will be in the village as much as possible and can be contacted on my mobile or via e mail if any one has any issues that they wish to discuss – Mobile: 07772226209. Email: gretel.may@kent.pnn.police.uk. • **Plans to re-launch a Neighbourhood Watch Scheme** were well underway. First meeting planned for Saturday, 11th May from 2pm – 4pm. Organisers reiterated that "the Scheme will only work if residents want it to work" – more details on page 9. • **Highways** - Parking on grass verges, litter on A20 and flooding issues in areas of concern, were all reported to Kent Highways and/or Dover District Council for further investigation. Report received from District Councillors Scales - the Dover Joint Transport Board is continuing to monitor Kent County Council expenditure and also waiting the 2013/2014 list of Highway works schedules. • **Planning** – Application received from Dover District Council for the site known as White Cliffs Café, New Dover Road B2011 to "Erection of a detached chalet bungalow (existing building to be demolished)". This would be considered by the Parish Council Planning Sub-committee and monitored accordingly. *(See page 7 on how you can view the weekly planning lists and register to receive update notifications).*

Next Parish Council meeting is on Tuesday, 21st May at 7.30pm in the Village Hall (Small Room).

A COPY OF THE MEETING'S AGENDA WILL BE AVAILABLE ON THE PARISH COUNCIL WEBSITE A WEEK BEFORE THE MEETING. <http://www.capel-le-fernepc.kentparishes.gov.uk>

ALL PARISH COUNCIL MEETINGS ARE OPEN TO THE PUBLIC, SHOULD YOU WISH TO ATTEND.

HOWEVER, SHOULD YOU WISH TO ADDRESS THE COUNCIL,

PLEASE INFORM THE CLERK PRIOR TO THE MEETING. THANK YOU.

Further information on any of the above or to contact Parish Council, please write to Parish Clerk, 39 Victoria Road, Capel-le-Ferne.
Tel: **01303 259564**. Email: maureen.leppard@btinternet.com - Or visit our website www.capel-le-fernepc.kentparishes.gov.uk

Capel-le-Ferne Parish Council - Chairman's Report 2012/2013

What a wonderful year for the village of Capel, I offer a huge vote of thanks to all in the village who worked so hard in making the 'Queens Diamond Jubilee' day such a great success. You can all be proud of the fact that if a celebration such as the jubilee is to be celebrated in Capel, it will be an event to be remembered. This year we will be placing, on a stone plinth, at the edge of the playing field, the 'Queen Elizabeth II' playing field plaque which was awarded to the village. We do hope that we will be able to invite a dignitary of Kent to come and unveil it for us. Under the leadership of Lynn Brisley and the outdoor gym committee, the playing field project has been making steady headway, all the necessary planning and procedures have taken place and completed, this year will see the first phase of our new Recreational Facilities in place and available for everyone to enjoy.

It is with regret, that while I was away on holiday, the Parish Council was invaded by around sixty parishioners at a normal council meeting. There is no reason why anyone from the village should not attend a council meeting but if they wish to address the council it should be made known to the Parish Clerk beforehand so that the matter could be placed on the agenda. Had the Parish Clerk been notified that a number of the villagers had concerns, with regard to regeneration in Capel, a special meeting for all the residents could have been convened with the appropriate officials from the Kent County Council and Dover District Council to answer questions about the land allocations and regeneration for Capel and other areas of Kent. We already had, two years ago, an open meeting, for three weeks, for the entire village to see and comment on the Governments proposals for housing development in Kent. After all the hard work which had been done by the committee since 2005, to compromise the Government's expansion plan and how it would affect our village. After the rejection which was sent on behalf of the villagers, it will now be up to Government and their decision as to what will transpire in Capel.

We only have to look at the 'Grapevine' to see all the wonderful things the village is capable of, and the talent we have in the village, no one should say they are bored with nothing to do - give it a go, young and old alike, there is something for everyone.

The Farmers' Market continues to be the pride of our village, well done to Jenny and Cherry with all their helpers, your market has become the envy of other villages in this part of Kent, well done all of you.

The number of clubs and associations the village has to offer are too numerous to mention. All are in the Grapevine, please read it, it's the best communication the village has to offer and our editor will be so pleased.

It only goes to thank my fellow Councillors, for all their hard work and dedication to duty, my Vice Chairman for the standing in he has done for me, and Maureen our Parish Clerk for keeping our ship on an even keel and a straight course, many thanks again.

Clive J. Goble

Chairman, Capel-le-Ferne Parish Council

Capel Outdoor Recreational Facilities Update Olympic & Jubilee Legacy



FUNDS RAISED FOR OUTDOOR GYM AND SKATE PARK!!

As a result of the generosity of the Roger De Haan Foundation Trust, we now have enough funds to order the new mini skate park – we are aiming for both this and the gym to be installed for the Summer.

Thank you to the Parish Council, Recreational sub-committee and volunteers for all of the hard work to reach this stage and to all of those who kindly completed a questionnaire during the winter of 2011. A further £21,000 will secure enough funds to complete the project with the installation of the zip wire and petanque court. A special mention must be made to Daniel & Kieran Glass who worked very hard removing the trees/bushes etc in the freezing weather, but were missed out of last months Grapevine update – we are really sorry boys, your help was much appreciated.

Thank you for the patience of our community members – I know that the project has taken a long time to get to this point - we needed to raise over £100,000 for the outdoor gym and skate park, which is obviously a vast amount of money and has taken a lot of time to come to fruition. However, a little moan – as you can see, a lot of people are working hard to make sure the aspirations of the village become reality – it is not appreciated when a couple of individuals decide to interrupt essential meetings by knocking on the windows and throwing soggy tissues at the village hall. The meetings may look boring (...and they often are!!), but please remember WHY we are there and respect those who are giving up their time to improve the facilities.

Right, enough of the moaning, may the sun start to shine and our Olympic/Jubilee Legacy commence!!

Chantal Blythe

Lynn Brisley

Community Warden (on maternity leave)

DDC Community Development Officer

And... thank you Lynn for your continued dedication to the Project. Without you, none of this would have been possible!

CAPEL LE FERNE NEIGHBOURHOOD WATCH RELAUNCH

ON 11TH MAY 2013 - 2.00pm UNTIL 4.00pm

Village Hall, Lancaster Ave, Capel-le-Ferne



This has been organised as an informal session for residents to have an input into a new Neighbourhood Watch Scheme in Capel. The benefits of such a scheme include:-

- an increased feeling of security,
- a reduction in crime,
- notification of local issues and
- potentially a reduction of up to 10% in household insurance

Several guests, including representatives of a successful scheme elsewhere, will be in attendance.

A variety of organisations associated with safety and security have been invited to be available to answer questions and concerns in their field of expertise.

'Street Contacts' are needed to pass on information to their neighbours. More will be explained on the day.

Whether or not you have time to be involved this is an opportunity to discuss the things which concern you.

EVERYONE (ANY AGE) IS WELCOME.

TEA & COFFEE REFRESHMENTS

All views are important.

If you are interested but unable to attend, please ring Jayne Stone (01303 211 480), Phil Jones (01303 243514) or contact the Parish Clerk (01303 259564).

CAPEL LE FERNE NEIGHBOURHOOD WATCH RELAUNCH

ON 11TH MAY 2013 - 2.00pm UNTIL 4.00pm

Village Hall, Lancaster Ave, Capel-le-Ferne



CAPEL EVENING W.I.

Hello everyone we are nearly half way through the year and still no sun to speak off. Even the flowers and buds in the trees are hiding in disgust at the weather. Let us hope the sun and the warmth comes soon and we will have a very hot summer. Who are we kidding or is it my wishful thinking.

Our April Meeting was interesting if not different. Susan Filby spoke on the 'Power of Music'. Susan travels around the countryside to various associations, day centres' and retirement homes especially those with Alzheimer's and Dementia. Music stimulates their senses and they are more willing to talk and join in if they are familiar with songs from days gone by. She presents it on a screen so that everyone can see the words and are not embarrassed if they do not know them or cannot remember them. We then had a communal sing song with some of the old favourites. Caroline gave the Vote of Thanks and wished Susan all the best with her continuing work. The competition was something beginning with the letter 'D'. Audrey Crouch was 1st with her comical Donkey. Christine gave us one of her amusing and tricky quizzes during members' time. Joint first was Sheila and Jan.

May's monthly meeting should prove to be very interesting - it is Sarah Wheeler who is going to give us a talk on 'Makaton' and for those of you who are scratching their heads and I was one of them, it is an easy type of 'Sign Language' that everyone can learn and she says that it is that easy. So if any of you ladies out there are interested in coming to have a look at what Capel Evening do then why not come along to this meeting and try us out. You will be given a warm welcome.

Future notes for your diaries: **July 27th 2013 – WI Afternoon Tea Party** at St Radigunds Church Hall – Come and enjoy afternoon tea and taste all the homemade goodies that we at the WI are good at making. **14th September 2013 – WI Wit & Wisdom** – So sharpen your pencils and put your 'little grey cells' into motion ready for the evening. Capel Evening WI is looking to organise a visit to the 'Globe Theatre' in London during the summer. We are hoping to take a full coach as it would be more economical. Ladies outside of WI, if you are interested and would like to come and join in with our fun day out, then please let us know - husbands are welcome to come too if they are good. He! He!

Once again it will be a busy month for our ladies with their additional activities: Darts, Scrabble, Craft, Home Economics, Book Club, the list is endless - No time to sit at home twisting our thumbs.

If anyone would like to ask about any of our meetings or joining WI you will always find us at the 'Farmers Market' every Tuesday. We are the group of ladies who take up the largest table every week. So please do not feel shy about approaching us, we always have a smile for everyone.

Just before I go I would like to mention on behalf of the Capel Twinning Association that they have an outing planned to Ardres near to Calais for the day on 22nd May 2013. They are short on numbers and would welcome anyone interested in joining them for the day. There will be cheese and wine tasting. I can just see everyone licking their lips, I am in anticipation. The cost is £22 per person (Lunch Extra). There will also be a trip to the Hypermarche to stock up on those cheese and wines. So why not give it a go. It might even be a sunny, warm day. Well we can all wish can't we! Well bye for now and talk to you all again next month.

Contact : Jan Ardley who is our Hon Secretary – 01303 892791

Capel le Ferne Evening Women's Institute

Meetings are held in the Village Hall, starting at 7.30pm. Visitors are welcome and may attend up to 3 meetings without becoming members.

More information from Jayne Stone 211480

14th May

WI Meeting Sarah Wheeler - Makatono

11th June

WI Meeting Tsuyoko Page - Origami

9th June

WI Meeting Veronica Ashby - Dungeness to Diamonds

13th August

WI Meeting Gehad Homsey – Mercy Ships

10th September

WI Meeting Judi Knight – Wartime fashions

8th October

WI Meeting - Mr D Wilks – Ecuador, Amazonia to the Andes



**WI Wit & Wisdom
Evening
Capel Village Hall
September 14th
6.30 - 10p.m.**

**Tables of 6 persons
Bring own Food & Drink**

Capel Twinning Association

Despite the chilly weather brave members of the CTA met in the Church hall late in March for an informal evening of blind wine tasting (supplemented by cheese and biscuits). Well, any excuse is a good excuse. Grapes, prices and countries of origin varied. We held the wine to the light – a clear ruby red or pale swirled it around the glass – smells fruity and then sipped – reminds me of blackcurrants. There was a great deal of chatter as we compared thoughts with each other- such as 'ooh I like that' to 'I think it's a Spanish Rioja' or 'this one must be expensive'. Mind you, the fact that we didn't spit the wine out may have contributed to the noise level. Eventually all was revealed, with a few surprises. Everyone thoroughly enjoyed themselves and thanks go to Bill & Barbara Heath and Kath Rudman for their entire organisation. The next outing is 22nd May to Ardres. For more information, contact Bill, Kath or Jayne on 211480.

CAPEL ACTIVE RETIREMENT ASSOCIATION



This year is racing ahead and our monthly meetings seem to come and go very rapidly. Our latest topic in April was *The Donkey Sanctuary* based in 5 centres around the country with the main farm in Devon, and lots of outlying 'sanctuaries' where individuals give homes to two or more donkeys – we learnt so much in such a short space of time about the 5,000 rescued animals receiving care. In May we are to hear the personal wartime experiences of one of our members, followed in June by a talk from a professional marine author, also one of our members. With a varied programme for the rest of the year we are in for a treat. Other events include a regular Lunch Club and day trips to various places locally and further afield. Our members are also preparing for our very first AGM on May 21st.

All of these details can be found on our website www.capelara.co.uk or if you would like more details or information

Please contact the Secretary on 01303 250144.

Kent Surrey Sussex


Air Ambulance
 A Charity That Saves Lives

Saddle up for Air Ambulance bike ride

The 100-mile or 100km ride on June 23rd will this year start and finish at the Surrey and Sussex helicopter base at Redhill Aerodrome.

Both new routes take in all counties covered by the two helicopters and the 100-mile route will pass through Marden in Kent – the home of Kent Air Ambulance.

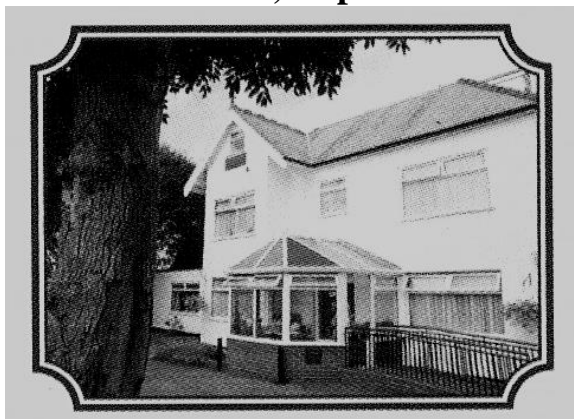
For more information contact The Communications Team:

Jamie Cheshire Press Officer 01622 833833 07800 904194 jamiec@kssairambulance.org.uk
 Nicci Chrisp Creative Communications Manager 01622 833833 niccic@kssairambulance.org.uk
 Jill Playle Director of Communications 01622 833833 07894 512268 jillp@kssairambulance.org.uk

BRACKNELL HOUSE

Residential Care Home

34 Helena Road, Capel-le-Ferne



24 Hour Staffed Residential Care

Long Term or Respite Care

Family and Friendly Atmosphere

Tel: 01303 254496

Or 07904095747

Email: bracknellhouse@btconnect.com

DO YOU NEED AN ELECTRICIAN? LOCAL, RELIABLE, AFFORDABLE

- Rewires • Consumer unit changes
- Garden Lighting • Additional sockets
- New Circuits • Fire & Intruder Alarm
- No job too small • All your electrical needs
- Free quotations
- Insurance backed work



HALKIN INSTALLATIONS

Tel: 01303 647131

Mobile: 07980 448796

E mail: matt@halkin-installations.co.uk

Web: www.halkin-installations.co.uk

We are a local, fully insured,
Part p registered company

I ♥
Slimming
World *because...*



SAVE £5
half price
membership

until 18th May
2013

PLUS!
your
ULTIMATE
SLIMMING GUIDE
It's never been
so easy!

Join a warm and friendly group near you today...

MONDAYS **Cheriton**

St Josephs Church Hall
Narabbeen Road
7.30pm
Call Susan 01303 230756

TUESDAYS **Cheriton**

St Josephs Church Hall
Narabbeen Road
5.30pm and 7.30pm
Call Susan 01303 230756

Lyminge

Lyminge C of E Primary School
Church Road
5.30pm and 7.30pm
Call Kirsty 07980 940368

WEDNESDAY MORNING GROUP **Hythe**

Hythe Pavillion, South Road
(opposite Hythe swimming pool)
9.30am and 11.30am
(new session added)
Call Kirsty 07980 940368

Folkestone

St Johns Church Hall
St Johns Road
7.30pm (New time)
Call Claire 01303 893349

THURSDAY

Hawkinge
The Churchill School
Haven Drive
6.00pm
Call Claire 01303 893349

0844 897 8000
www.slimmingworld.com



Slimming
WORLD
because you're amazing

News from the Battle of Britain Memorial Trust

Custodians of the National Memorial to the Few, Capel-le-Ferne, Kent - April 2013



Come and see us at the site

Well, the weather is still not great, but the site is fully open again, thanks to the on-going efforts of our great bunch of volunteers. You can visit the shop, enjoy a cuppa in the café and make use of the free car park from 10am each and every day. Despite the weather our volunteers have been opening on Wednesdays and weekends throughout the winter.

Tribute to one of the Few: A memorial to a Battle of Britain pilot who died when his plane crashed following an encounter with Messerschmitt Bf 109s over Folkestone is to be unveiled on Thursday 4 April.

Sergeant Pilot Robert HB Fraser's Hurricane V6851 of No 257 Squadron crashed at Moat Farm Shadoxhurst on 22 October, 1940. He will be remembered by a plaque that is to be unveiled by Kent High Sheriff Michael Bax, who now lives at Moat Farm. On 3 September 1940, Sgt Fraser – known as Bobby – was credited with the probable destruction of a Bf 110 near North Weald. Sgt Fraser, who was 20 when he was shot down, is interred in Craigton Cemetery, Glasgow. A fellow Hurricane pilot and member of Churchill's "Few", Wing Commander Bob Foster DFC, AE, will be at the unveiling along with other representatives from the Battle of Britain Memorial Trust, of which Wing Cdr Foster is Life Vice-President. The plaque and base has been donated by Gordon Newton of the Stone Shop, Maidstone.

Win a flight in a T-6 Harvard You could enjoy the experience of a lifetime by taking part in this year's Battle of Britain Memorial Trust Grand Draw. With tickets just £5 each, this is a remarkable opportunity to fly in the aircraft that has been used for training Spitfire pilots since the war. With its roomy cockpit and rear swivel seat, the T-6 is ideal for aerial photography and is fully aerobatic – as long as you have the courage to ask the pilot! The first prize winner in this year's draw will take off from the Battle of Britain fighter station at North Weald in Essex before enjoying a fantastic flight thanks to the generosity of our friends at Kennet Aviation.



There are four other great prizes, too. The second prize is a print, "Gentlemen as you were", by Gil Cohen kindly donated by [Vector Fine Arts](#). This fantastic print has been signed by three distinguished Battle of Britain Spitfire pilots – Wing Cdr Peter Oliver DFC, Sqn Ldr Peter Brown, AFC and Wing Cdr E B B Smith DFC. Third prize is a signed copy of Tom Neil's new book "The Silver Spitfire", the fourth prize is a model Spitfire accompanied by a Haynes Manual in a box signed by a number of Battle of Britain veterans and the fifth prize is one of our irresistible Battle of Britain Memorial Trust pilot dog soft toys. The draw will be held at the End of the Battle Gala Dinner on 17 October 2013 and postal applications must be received by 11 October 2013. You can enter by following this link - <http://www.battleofbritainmemorial.org/win-a-flight-in-a-t-6-harvard/> - and then downloading a copy of the ticket, printing it, completing it and sending it to the address given.

Make it, paint it, watch it on 8 June: We are planning a full day of fun on 8 June as our contribution to this year's Folkestone Air Show. The organisers have promised to turn the aircraft over the site at Capel-le-Ferne, which is at one end of the flight line and offers a more sedate viewing point for the spectacular display, which will take place off the coast at Folkestone. We are planning to build on that attraction by opening the site up for a Capel-le-Ferne village event which will be based around another of our successful Airfix Make & Paint Days. This will give youngsters – and the not so young – the chance to make and paint a great Airfix kit and take it home, all free of charge. We are also planning refreshments, stalls and other attractions that visitors will be able to enjoy while watching the airshow from a sedate, picnic-friendly viewing spot. We will release more details nearer the time.

Marathon fund-raising effort supports The Wing: Trust supporter Debb Hackett has run her way to a fantastic £1,300 contribution to The Wing – and her marathon fund-raising effort is far from finished. Debb set out to run two half marathons in support of The Battle of Britain Memorial Trust's new visitor and learning centre, and despite a change of plan caused by the weather she looks set to raise £1,500 by the time she crosses her fund-raising finishing line. Debb, whose husband Willy Hackett MBE is an RAF pilot who instructs in the two seat Boulton Paul Flight Academy Spitfire, decided to run the Bath half marathon in the spring and the Great North Run in the autumn.

She set up an online fund-raising page at <https://mydonate.bt.com/fundraisers/forthefew> and began training, but soon found she needed flexibility as well as fitness. Unable to secure a place in the Bath race, she switched her attention to the Forest of Dean Half Marathon in March – only to see it cancelled on the day because of the weather. But Debb was determined to press on: "I had trained to run a half marathon that day and I felt ready for it, so I decided to run the distance on my own," she said. "It was very cold, but my sponsors were very happy to support me and I completed the half as planned." Because Debb and Willy have now been posted to Washington DC from July, she has also had to abandon her plans to do the Great North Run as her second event, but her Battle of Britain-style determination has again shone through and she will instead run her second half in the States. "Two halves on two continents will make a whole marathon," she said. "I think that's rather fun." Her supporters clearly think so too, with her fund-raising target already broken and money still coming in. Both Debb and Willy have met a number of Battle of Britain pilots – including the late Flt. Lt. William Walker AE, who died at the end of last year aged 99 – and share their determination that The Wing must be built to keep alive the memory of this historic victory and how it was achieved. "I'm a very amateur runner who wants to make sure there's a proper visitors' centre at the Battle of Britain Memorial," said Debb. "I want to help us all remember the Few. "People have been very generous with their donations and with running advice, and even Paula Radcliffe gave me some pre-run words of wisdom and said I'd done well when I reported back." You can help Debb reach her goal – and ours – by signing up to her MyDonate fundraising page at <https://mydonate.bt.com/fundraisers/forthefew>

Planning for a very special Memorial Day 2013: This year's Memorial Day will also mark 20 years since the memorial was unveiled by Her Majesty Queen Elizabeth the Queen Mother in 1993! Those who were present on that historic day will be hoping for better weather. Driving wind and rain threatened to prevent the Royal helicopter from landing on the site at Capel-le-Ferne winds, leading to an interesting tale of the Queen Mother's determination. Rumour has it that when the pilot asked if he should give in to the appalling weather, turn around and take her home, the Queen Mother said that as "her boys" had not turned back in 1940 she wasn't going to turn back either. The story may or may not be true but has acquired legendary status. This year's Memorial Day – the biggest annual event in the Trust's calendar – will take place on Sunday 14 July and will again be attended by as many surviving members of the Few as are able to be there. The Trust is hoping somewhere around ten or a dozen veterans will be able to attend. The Battle of Britain Memorial Flight will again be supporting the event with a flypast, while music will as always be provided by the RAF Central Band and the Kent Wing of the Air Training Corps. The event is free to attend and there will be a bar and catering on the site, which will open at 10am, with the General Salute at 1.30pm and the flypast at 3pm.

News from the Battle of Britain Memorial Trust

Custodians of the National Memorial to the Few, Capel-le-Ferne, Kent - April 2013



A few spaces left for this year's tours: The Battle of Britain Memorial Trust's tours of 'Hellfire Corner' bring to life the part that this corner of Kent played in the summer and autumn of 1940. This year's tours take place on 4 May and 7 September, but as always it's 'first come, first served' – and these are popular events. The 2013 tours will again include a visit to the Battle of Britain Museum at Hawkinge, with its extensive collection of memorabilia, and the village of Elham, which played a unique role during the Battle. The tours are led by author and historian Geoff Simpson, a member of the RAF Historical Society and author of many texts on the Battle including "A Dictionary of the Battle of Britain". Uniquely, they include lunch and afternoon tea with one of the Few. September 2012's end-of-season tour saw Squadron Leader Tony Pickering in fine form, entertaining the guests over lunch and talking to them throughout the rest of the tour. The tours offer enthusiasts an unbeatable opportunity to combine a great day out with the chance to learn more about the historic events of the Battle of Britain, much of which took place in the skies over this part of the country.



The tours start at the National Memorial to the Few at Capel-le-Ferne. For information and an application form, contact Trustee Andrew Simpson, 31A Castleton Ave, Bexleyheath, Kent, DA7 5QT, email aj.simpson1950@talktalk.net or download an application form by following this link to the website: <http://www.battleofbritainmemorial.org/events/2012-guided-tours/>

There's more on the website: Take a look at our website at www.battleofbritainmemorial.org – or catch up with us on Facebook by searching for 'Remembering the Few'. And don't forget that an easy way to support the Trust is to buy a car sticker for just £1.50 each (plus 50p P&P). Email malcolm@go4marketing.net with any questions, fund-raising ideas or bulk buy enquiries. Don't forget to add your name and address when you send your car sticker cheque, made payable to the Battle of Britain Memorial Trust and sent to the Battle of Britain Memorial Trust, PO Box 337, West Malling, Kent ME6 9AA.



Why not display a car sticker?

Come and see us. The Memorial itself is open all year round for those on foot – and the car park, shop and café are open throughout the summer and on Wednesdays and at weekends throughout the winter.

The volunteers will also open on special occasions for groups (if you ask nicely). To ask nicely, check opening times or find out anything else before visiting just ring 01303 249292 or 01732 870809. The site is approached from either Dover or Folkestone on the B2011 at Capel-le-Ferne; postcode - CT18 7JJ. It's all on the website!

More soon; let me know if there is anything you would like information on in a future edition and please feel free to pass this email to friends or family who may be interested. Ask them to send me their email address if they want to be sent this newsletter in future.

Don't forget - if you don't want to receive these emails, just reply with 'unsubscribe' in the subject box.

Malcolm Triggs, Go4 Marketing and Public Relations Ltd. Tel. 01233 636878. Mob. 07970 968314. E

malcolm@go4marketing.net

A member of Kent Invicta Chamber. Registered number 4327581. Registered in Cardiff.

Registered office 7, Lacton East, Willesborough, Ashford, Kent TN24 0JF

NEWS RELEASE - Red Arrows to return in June

STAR performer at last year's Folkestone Airshow, the RAF Red Arrows aerobatics team is to return for the 2013 event, organiser Folkestone Town Centre Management Ltd (FTCM) has announced. On Saturday, June 8, it will be the first major display of the year for the team whose high-speed manoeuvres in 'diamond nine' formation have thrilled air show audiences all over the world.



For information about sponsorship and other opportunities log on to www.folkestoneairshow.com

Media contacts: Ted Kirkham - 01303 230688; e-mail: eurotourism@teamkirkham.co.uk

Yvonne Holder - e-mail: yvonne.holder@folkestoneairshow.com

Folkestone Airshow 2013 is organised by Folkestone Town Centre Management Ltd. Registered Company in England No. 4152175. Registered Office 29, Manor Road, Folkestone, Kent. CT20 2SE



Saturday, 8 June 2013

CAPEL-LE-FERNE BOWLING CLUB



Well the short mat bowls season is drawing to a close and what a great season it's been. Competitions finished on time and lots of new members to join our happy throng.

2012/13 Competition Winners and Runners up

Mixed Singles – Winner, Elaine Wells	– Runner up – Barrie Pape
Mens Singles – Winner, Don Overall	– Runner up – Brian Castle
Ladies Singles – Winner Ros Chandler	– Runner up – Rachel Chandler
Nominated Pairs – Winners, Sylvia Ovenden & Don Overall.	– Runners up – Rachel Chandler & Barry Mansfield
Drawn Pairs – Winners, Sylvia Ovenden & Barrie Pape.	– Runners up – Ros Chandler & Barry Mansfield
Nominated Triples Winners – Wendy Leeming, Elaine Wells & Malcolm Leeming	
Runners up – Pam Bamfield, Carole Evans & Jenny Carter	
Trophies will be presented on 20 th April WELL DONE EVERYONE	

The Annual Quiz Night won by our very own masterminds "The Kernels" - Ros, Rachel, Emma, Linda, Barry and Charlotte. Watch out for them on The EggHeads BBC 2

Thanks to Jenny and her helpers for organising this event for us, we raised a tidy sum to help the club.

The East Kent League: This is going to be a nail biting finish with our team the Kiwi's currently in third place.

Presentation Night and Dinner: Will be on 20th April in the village hall @ 7.30pm

Annual General Meeting: 29th April in the small hall - 6.30pm for 7.0pm

Jenny Carter 01303 250928 - Barry Mansfield 01303 257157 - Ros Chandler 01303 255862



**CAPEL-LE-FERNE PRIMARY SCHOOL
PARENTS' & FRIENDS' ASSOCIATION**
Capel Street, Capel-le-Ferne, Folkestone
CT18 7HB. Tel: 01303 251353.

FUNDRAISER

'Phil' the Bag™

Recycling with over 10,000 schools,
PTA's, clubs and charities

<http://www.philthebag.co.uk/>



We are raising funds through recycling!

Please donate any unwanted textiles – all kinds of clothing, shoes, bags, belts, hats, curtains, towels and bedding, by bringing them to the school. Weekdays, between 8.30am and 8.45am, before 21st May.

Unfortunately we are unable to accept towels, bedding and curtains from commercial organisations, e.g. hotels!

Thank you. Capel-le-Ferne School PFA



Judo I.B.F. Club ET.1978



Capel le Ferne Village Hall - Every Wednesday

Juniors (6-9 years) 5.30pm-6.30pm

Seniors (10 years +) 6.30pm-8.00pm

Senior Coach: Colin Carrott 3rd Dan Tel: 01303 258942

Technical Advisor: Colin Ogburn 3rd Dan

Tel: 07870 822 510. New Members Very Welcome

Up to 5 Qualified Insured Instructors & Coaches to give expert tuition.

Come & try this DYNAMIC MARTIAL ART

Senior Volunteering in Romania Project

We have unfortunately lost some of our volunteers and so need urgently to find 2 replacements. If you know of anyone over 50 years who would like a trip to Romania, between 25th May and June 16th, to stay with Pro Vita, then please let us know. (It can be an individual, or a couple who wants to come, we simply need at least 6 volunteers on the project)! They have the opportunity to stay with Association Pro Vita, which is a non-profit organisation whose aim is to offer social assistance to people who are in difficulty, regardless of age, gender, religion or race. It provides an alternative to the state-run orphanages and offers a home style residential facility for children abandoned by their families. Located in Romania, it is in a very rural location, with a beautiful surrounding landscape. We need volunteers over 50 who want to share their experiences they will find in Romania with their wider community after the project. They will stay in guest houses with en-suite bathrooms and a volunteer kitchen, and should be prepared for sunshine. The two week event that they will attend is a national summer-camp where children from all over Romania come to join Pro Vita children to enjoy getting away from the extreme poverty and deprivation that usually governs their daily life. Sports, open air theatre, music, dancing and team games are enjoyed by all children and supporters. Rural Kent volunteers will help organise this summer camp.

"When I was offered a place on this project I was so pleased. It was like a dream come true." - Valerie, one of our volunteers. This is a great opportunity for anyone who knows someone over 50, who wants to gain invaluable life-experience, and meet likeminded enthusiasts who want to share knowledge of community development.

For more information please either contact Maureen Walby on 07703 048602 or Alex Weller on 01303 813790

Dover District Council in conjunction with 3 other Local Authorities (Gravesham, Tunbridge Wells & Dartford) are about to launch a Collective Energy Switching Scheme (22 April 2013). Residents from the areas (and indeed outside the areas) can register free of charge and without obligation. The idea of the scheme is to take the hassle out of switching. The Councils together with an intermediary will collate the registrations, and then take to auction. At the 'reverse' auction energy companies will bid to secure the business, the company offering the lowest bid will be chosen. Therefore the more households who join the stronger the bargaining power, (i.e. the more attractive to energy companies).

The scheme launches on 22 April 2013, and the registration period will run until the end of May 2013.

Kind Regards!

Amanda Martin, Climate Change and Energy Conservation Officer, Dover District Council, Council Offices, White Cliffs Business Park, Whitfield, Dover CT16 3PJ.

Tel: 01304 872128. Mob: 07917 167763. Fax: 01304 872240

Email: amanda.martin@dover.gov.uk Web: www.dover.gov.uk



Could you be paying less for energy? No time to shop around to compare tariffs? Let us do the hard work for you! Join your local collective switching scheme to get a better energy deal. Dover District Council has teamed up with Chooser to provide a collective switching scheme which aims to help residents access a better deal for their gas and electricity bills. From 22 April to 3 June you can register at www.energydealswitch.com to take part in the scheme. You will need an energy bill or annual energy statement so that we can make you an offer suited to your needs. You can register up to five households on the same email address, so you can help friends or family who do not have internet access to participate. If you do not have a computer you can still take part. You can register:-

- By telephone on 01304 872428
- At your local Gateway in Castle Street, Dover
- At the Council Offices Whitfield

An auction will be held on 4 June when energy suppliers will compete to offer the best energy deal. You will then receive a personal offer telling you the auction result and how much you could save. You decide whether to make the switch and we help you through the process.

The Folkestone Big Band Appreciation Society

On Wednesday May 15th at

Wards Hotel, Earls Avenue, Folkestone

From 2 - 4pm

**John Oliver will present the music of
Ronnie Aldrich and The Squadronaires
and the Royal Air Force Squadronaires.**

**All are welcome and it only costs £1 which is
donated to The Kent Air Ambulance**

For more information contact

John Oliver 01303 251403

USEFUL CONTACTS INCLUDING ACTIVITIES & CLUBS	CONTACT NAMES	TELEPHONE NUMBER
Community Warden	Mr Dave Bish	07811 271020
Parish Council, Chairman	Mr Clive Goble	01303 240566
Parish Council Clerk	Mrs Maureen Leppard	01303 259564
Webmaster	Mr Peter Jones	01303 248149
Chairman, V. H. Committee	Mrs Jayne Stone	01303 211480
Vice Chairman	Mr Jerry Watson	01303 258865
Secretary	Mrs Cherry Leppard	01303 255114
Treasurer	Mrs Jenny Carter	01303 250928
Lettings Secretary	Mrs Joan Woodsford	01303 252354
Minutes Secretary	Mr Gerry McCann	01303 850332
Maintenance	Mr Derek Jeffrey	01303 259842
Trustee	Mrs Jenny Barraclough	01303 245399
Trustee	Mrs Julie Young	01303 259734
Trustee	Mr Mike Stone	01303 211480
Trustees	Mrs Sue McCann	01303 850332
100+ Club	Mrs Wendy Leeming	01303 259120
Farmers Market	Jenny & Cherry	245399/ 255114
Boot Fairs	Mrs Wendy Leeming	01303 259120
Village Hall Quiz Sheets	Jenny & Cherry	245399 / 255114
Table & Chair Hire	Mrs Jayne Stone	01303 211480
Noticeboard (£1 per month)	Committee Members	
Divas Dance	Miss Rebecca Uden	01303 893650
Brownies	Mrs Sandra Sharpe	01303 241767
Guides	Miss Rachel Chandler	01303 210702
Youth Club	Mr Simon Withey	07860803767
Playgroup	Mrs Alison Cloake	07977 838609
Judo	Mr Colin Carrot	09850 548769
Capel Active Retirement Association	Mrs Sally Solly	01303 250144
Short Mat Bowls	Mrs Ros Chandler	01303 255862
W.I.	Mrs Jayne Stone	01303 211480
Fit Friends - Pilates	Mrs Pam Vivien	01303 244322
Keep Fit	Mrs Karolin Taylor	01303 246887
Zumba Fitness	Tuesday&Thursday6pm.	07411966582
Capel Ramblers	Mr Bob Mothersele	01303 250931
Gardeners Association	Mr Gerald Harman	01303 255661
Bridge (Sunday & Tuesday)	Adrian & Judy	01303 245521
Bridge (Fridays)	Mr Bob Jones	01233 756362
Art Group, St. Radigunds Church	Mrs Susan Dootson	01303 243508
Remote Control Car Club	Mr Derek Jeffrey	01303 259842
St. Radigunds Players & Choir	Mr Colin Blake	01303 241399
Twinning Association	Mrs Jayne Stone	01303 211480
St. Radigunds Church	Rev. Brian Williams	01303 243784
St Radigunds Church Hall Bookings	Steve Lennard	01303 670445
Capel Baptist Church	Mrs Gill Cooper	01303 251086
Welcome to Village Letter	Mrs Debbie Catling	01303 251525
Dog Walkers	Mrs Pam Sheppard	01303 243832 (eve)

Please let me know if I've left anyone/anything out!
Or if any details are Jenny 01303 245399



Capel-le-Ferne Playgroup

The Village Hall, Lancaster Avenue,
Capel-le-Ferne, CT18 7LX
capelpreschool@btinternet.com
Running for over 40 years

Ring Alison on 07977838609 or drop in during one of our sessions.
A few vacancies available

***** Ofsted 2010 - Outstanding environment and good in all other areas. *****

Open Term Time - mornings Monday, Wednesday, Thursday and Friday.

Capel Chimney Sweep Services

No dust, mess or fuss!

Fully Insured service for
all your chimney needs.

Complete service, sweep and vac.

Telephone Dave

on:

07896 282093 or

01303 231313

Institute of Chimney Sweeps Certificate
(ICS) qualified. Chimney safety
certificates issued for compliance with
your home insurance.



CAPEL-LE-FERNE WEBSITE

www.capel-le-ferne.org

Please could all Clubs & Societies in the Village, regardless of where and when they meet, send regular updates plus contact information to our Webmaster. Also all forthcoming events, in fact any information of interest in the village, i.e. local events, history, local celebrities, family searches etc. The website is proving very popular, receiving many enquiries. Current information is important and it cannot be updated without your help. It is a mine of information, especially for anyone new to the village. All event posters are placed on there to be downloaded by anyone wishing to display one. If you have ANY photographs of Capel, your club, events, history, the area etc. please forward them for inclusion in the Gallery of Images. Contact Peter at:

28 Helena Road, Tel: 01303 248149 Email:
webmaster@capel-le-ferne.org



**Mobile
Library
Every
Tuesday**



Old Dover Road 10.25am - 10.40am
Victoria Road 10.50am - 11.20am
Reece Adams House 11.25am - 11.55am
Village Hall 12.00 noon - 12.30pm

Simpson Aerials

Your local aerial installer
We install, repair and tune all TV and
Radio Aerials and Satellite, including
Freeview, Freeview Plus, Freesat and
Freesat plus. Est: 1988



Call Peter on



01303 250360 or 07971807150



Computer Problems Solved
Tel: 01303 241325 Mob: 0796 8129 902
Usual Fee **£35**
*PCs, Laptops, Tablets setup with Internet, Email, Security & Office Programs – Ring for new PC prices
*PC / Laptop upgrades and repairs
*Business Web sites built & hosted from £10 pm
*Tuition available by a qualified tutor
Ring Tony for a fast and friendly service
See www.kimcomputers.co.uk for details

www.villageyak.co.uk

CAPEL VEHICLE SERVICES

All makes of cars serviced and repaired.
MOT repairs, mechanical and welding.
Tyres, Exhausts, Batteries & Towbars
Supplied and fitted
Competitive rates. No VAT.

Friendly efficient service

Call John Horne 01303 255894 or email:

Johnhorne@amserve.net

Local free collection and delivery available if required
MOTs

Roger Crowther
rcrowther@btinternet.com
Experienced and fully qualified Handyman
For free estimate tel.
01304 822649
07543 852682
All jobs, large or small.
5% discount for OAPs.
References available.



Carpentry, painting & decorating, tiling, misc. electrical and plumbing works, garden structures, odd jobs and repairs.

Absolute Security
LOCKSMITHS
Opening hours: Mon-Sat 9am – 6pm
No call out charge – 24 hours, 7 days
All types of locks, open-supplied-fitted
Boarding Service - Emergency Repairs.
Key Cutting. Domestic & Commercial. Shutters,
Grilles, Bars, Safes. Video/Audio Entry Systems.
Fitting Service Available.
01303 210057 / 07887652507

G B Haworth



Painter & Decorator
Interior & Exterior
Free Estimates Capel - 244206

GRAPEVINE ADVERTISING from 1st April 2013
This space could be advertising your commercial /business venture or, non-village organisation event.
Size 9cm x 3.5cm £ 9.50 Size 9cm x 7cm £14.50
Size 9cm x 13cm £20.00. Size 20cm x 13cm £36.00 (½ page)
Payment in advance. Cheques payable to
Capel-le-Ferne Parish Council
For further details contact Parish Clerk at 39 Victoria Road,
or Tel: 01303 259564. Email: maureen.leppard@btinternet.com

CAPEL groundworks



- All types of paving (driveways, patios, pathways)
- Full driveway & dropped kerb packages
- Dropped kerbs
- Bricklaying & retaining walls
- Tarmac & concrete
- All types of groundworks including foundations, drainage, etc

Contact us for a free quote

T: 01303 253437 M: 07788 146673

capelgroundworks@btinternet.com

www.capelgroundworks.co.uk

Do you

1. Need an extra telephone point in your house?
2. Need to relocate your existing telephone points to a more convenient place?
3. Need network cabling or system installation for your business?



For excellent rates call JOHN @ j.waller services.
Fully qualified ex BT engineer with 12 years experience.

07766 068100 01304 225420

www.j-wallerservices.co.uk

Half the price of BT OPENREACH GUARANTEED

Recycling/Waste Collection Dates:

Food Waste, Rubbish & Green Waste

Friday, 3rd, 17th and 31st May.

Food Waste & Recycling

Fridays, 10th and 24th May.



Items for June issue to be with Maureen Leppard (Editor) at
39 Victoria Road, Capel-le-Ferne CT18 7LT, (Tel: 01303 259564) or
Email: maureen.leppard@btinternet.com by 6pm, Sunday, 19th May 2013

