



CAPEL-LE-FERNE PARISH COUNCIL LAND ALLOCATION PRE-SUBMISSION LOCAL PLAN

Parish Council Response Letter – see page 7

Next Parish Council meeting is on Tuesday, 19th March at 7.30pm in the Village Hall (Small Hall).

A COPY OF THE MEETING'S AGENDA WILL IN FUTURE BE AVAILABLE ON THE PARISH COUNCIL WEBSITE A WEEK BEFORE THE MEETING. <http://www.capel-le-fernepc.kentparishes.gov.uk>

ALL PARISH COUNCIL MEETINGS ARE OPEN TO THE PUBLIC, SHOULD YOU WISH TO ATTEND. HOWEVER, SHOULD YOU WISH TO ADDRESS THE COUNCIL, PLEASE INFORM THE CLERK PRIOR TO THE MEETING.

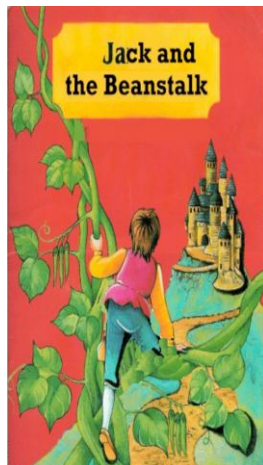
Further information on any of the above or to contact Parish Council, please write to Parish Clerk, 39 Victoria Road, Capel-le-Ferne.
Tel: 01303 259564. Email: maureen.leppard@btinternet.com - Or visit our website www.capel-le-fernepc.kentparishes.gov.uk



Back by popular demand and
relocated to Village Hall
**WI Bingo Evening on Saturday 9th
March.**

Cash prizes for the bingo

and entertaining half time Scategories, with a chance to win £1 million! Doors open 7.00pm, eyes down 7.30pm.
More information from Jayne Stone 01303 211480



**St Radigund's Players
presents
Jack & the Beanstalk
Friday, 15th March and
Saturday 16th March
7.30pm at
Capel-le-Ferne
Village Hall**

Tickets:
ADULT £6 CHILD £4
Available from Capel
Primary School, Farmers'
Market and Amin's Store.

*If you know the details of your event in advance, please let
Parish Clerk know so organisations avoid hooking same date*

"WHAT'S ON" IN CAPEL-LE-FERNE

6 th Mar	Railway Swing Band-Harvey Grammar School (Page 7)
8 th Mar	'The Man Who Never Was' @ Church (Page 2)
9 th Mar	WI Bingo Evening in the Village hall
12 th Mar	WI meeting: 25 year role at Dover Castle
15 th & 16 th Mar	St Radigunds' Players - Jack & the Beanstalk @ Village Hall, Lancaster Avenue @ 7.30pm
19 th Mar	Bowls quiz night (page 6)
22 nd Mar	Capel Twinning Association – Wine Evening
31 st Mar	Indoor Boot Fair (Page 3)
6 th Apr	Gardeners Association Spring Show (page 5)
9 th Apr	WI meeting: The power of Music
12 th Apr	A talk with Musical Illustrations @ Church (Page 2)
13 th Apr	Cancer Research Jumble Sale @ Village Hall (Page 4)
13 th Apr	Samaritans Murder Mystery Evening (page 10)
20 th Apr	Capel School PFA Quiz Evening @ 7pm
27 th Apr	Chicory Tip (Page 3)
10 th May	Ann Finney on Glen Miller @ Church (Page 2)
11 th May	Youth Club Quiz Evening @ the School 7pm
14 th May	WI meeting: Makatono
11 th Jun	WI Meeting: Origami
14 th Jun	Al Jolson- the man and his Music @ Church (Page 2)
27 th Jun	Youth Club AGM @ Village Hall – 7.30pm
6 th Jul	Capel School Summer Fayre
9 th Jul	WI meeting: Dungeness to Diamonds
12 th Jul	Musical Theatre 50's to present day @ Church (Page 2)
12 th Jul	Capel Twinning Association - BBQ
27 th Jul	WI - Afternoon Tea Party in Church Hall
10 th Aug	Agape Gospel Choir/Jazz Group @ Church (Page 2)
13 th Aug	WI Meeting: Mercy Ships
10 th Sept	WI Meeting: Wartime fashions
13 th Sept	Dr John Ray - The Battle of Britain @ Church (Page 2)
28 th Sept	Youth Club Quiz Night at Capel School at 7pm.
8 th Oct	WI meeting: Ecuador, Amazonia to the Andes
8 th Nov	Capel School Firework Display
7 th Dec	Capel School Christmas Fayre



**CAPEL-LE-FERNE
FARMERS MARKET**

EASTER SPECIAL

26th March - 10a.m. to 12.30 p.m.

Easter Bonnets, will be worn

Find the Easter Egg Competition

Free Entry Competition for the best

Spring Flower Decoration

will be judged at 11 a.m.

Bring your entries along at 10 a.m.



Benefice Services for MARCH 2013

Sunday 3rd	Evensong 4:30pm	Sung Eucharist 9.30am	Worship Tog'r 11am
Sunday 10th	Sung Eucharist 9am	Worship Tog'r 11am	
Sunday 17th	Family Service 11am	Evensong 6pm	Sung Eucharist 9.30am
Sunday 24th			Benefice Eucharist 10am
Thursday 28th			Maundy Thursday - Eucharist 7pm
Friday 29th	Meditation on the Cross 12pm	Meditation on the Cross 2pm	Meditation on the Cross 1pm
Sunday 31st	Easter Day Eucharist 9:00am	Easter Day Eucharist 10.30am	Easter Day Eucharist 9.30am

Despite my grandfather having been a keen gardener, and one of my uncles having regularly won prizes in his village's gardening competitions, I do not count myself as a good gardener – but nevertheless I enjoy growing things. A while ago, I grew some Passion flowers from seed. The original wild specimens were, apparently, discovered in South America by Spanish monks, who were reminded of the suffering of Christ by their hand shaped leaves and whip like tendrils. The flowers, with their nail-shaped stigmas, reminded them of the crucifixion, and their ten petals of each of the disciples except Judas, who betrayed Jesus, and Peter, who denied him. Judas and Peter may have messed up the most, but all of the disciples, having promised to stick with Jesus no matter what, messed up. When he was arrested they ran away. At Jesus' trial none of them were anywhere to be seen. You might think that people mainly talk to me about whether God exists or not. They don't. People seem to talk to me more about times in their lives – real or imagined – when they feel that *they* have messed up – about things they did or said that they have regretted ever since, or times when they feel that they let others down. Those who Jesus chose as his followers were just as human as we are – they all messed up, just as we all do. But Easter, which we celebrate this month, brings a twist in the tale. In St John's gospel the story ends with Jesus, now risen from the dead, cooking breakfast for his disciples on the beach. Instead of ranting at them about how they let him down, he simply asks Peter if he loves him. Anyone else might have fired Peter for having got it wrong. Instead, Jesus gives Peter a new job - caring for the others - and a chance to start again.

Easter is about more than chocolate – it offers the hope of new life, laying our mess ups to rest, and no end to new beginnings.

Happy Easter! *Brian Williams*



Benefice of Alkham, Capel and Hougham Lent Lunches

On each Wednesday in Lent members of our benefice will be hosting a series of lunches to which all are welcome. For £3.00 per person, you will be served with soup, bread and cheese, and ALL proceeds will be donated by the host/hostess to a local charity of their choice. Turn up anytime between 12:30pm and 2pm to partake of a tasty meal and enjoy the company of others from all three villages. The venues are:-

March 6 th	56, Alexandra Road, Capel -	hostess Vad Blake
March 13 th	The Granary Crook Court Lane Hougham	hostess Helen Scopes
March 20 th	Hermitage, Slip Lane Alkham	hostess Marion Banks-Nash
March 27 th	Chalksole Cottage, Alkham	hostess Linda Gaskill

For further information please contact Jerry Spillett on 01303 242146.



Capel-le-Ferne Church Hall Fund

Friday March 8th in St Radigunds Church Albany Road, Capel-le-Ferne - There is still time to buy your tickets for Nicholas Reed who will be talking about his father Ronnie Reed who was Case Officer for The Man Who Never Was and it was his photo that was used in Operation ZigZag. Hitler presented Agent ZigZag with The Iron Cross not realising he was a double agent and he passed it on to Ronnie Reed. Come and hear more about this fascinating Operation in WW2 and you can also buy Nicholas's book on the subject.

Friday April 12th - We are extremely fortunate to have Carl Spencer coming to give us a talk entitled 'Where did Swing Come From?' with Musical Illustrations. Google Spencers Nighthawks and you can see and hear what a superb cornet player he is and what a good early Dixieland Swing band he fronts. This is going to be a musical treat for lovers of early Jazz music.

Tickets for both evenings are available from me at **£5** each including tea/coffee and biscuits (or are available on the door on the night but better to get them early so we know how many to cater for)

All evenings start at 7.30pm with doors open from 7pm and take place in the church rather than the church hall

May 10th - Ann Finney on Glen Miller

June 14th - David McCarthy UK Rep for The International Al Jolson Society will present Al Jolson- the man and his Music-The Life and Music of the World's First Super Star

David gave us an introduction to Jolson last year which was an intriguing eye opener to many and he has been invited back due to many requests to hear more of Jolie.

July 12th - Keith Radford - Back again to give us his latest talk Musical Theatre from the 50's to the present day.

This talk will particularly appeal to those who come on my theatre trips as he will be covering many of the shows that we have been to over the last 13 years.

August 10th (Saturday) - The Folkestone Agape Gospel Choir and Jazz Group

September 13th - Dr John Ray on The Battle of Britain

Tickets are available from me. **phone 01303 251403 or e mail to john.e.oliver@talktalk.net**

John E Oliver, Chairman - Capel Church Hall Fund





CAPEL-LE-FERNE VILLAGE HALL MANAGEMENT COMMITTEE
Registered Charity Number 281.786. **PROVIDING SERVICES FOR OUR COMMUNITY**

All this information and more can be found on our website www.capel-le-ferne.org

Please help us keep this up to date by contacting our Webmaster

Committee Meetings are held at the Village Hall on the First Tuesday of every month at 7.30pm.

A REPRESENTATIVE FROM ALL HALL CLUBS AND USERS, IS REQUESTED TO ATTEND
THE ANNUAL GENERAL MEETING WILL BE HELD ON TUESDAY, 26th NOVEMBER 2013

RECYCLING

INSIDE THE HALL Boxes are provided for:- Unwanted shoes for charity, Used Stamps for Moorfields Eye Hospital & Hearing Dogs. **PLEASE DO NOT LEAVE Plastic Lids/Bottle Tops** – we have unfortunately lost our contact for collection. We will inform you via the Grapevine, if and when we re-commence. Please place the above in the relevant boxes provided.

CONTINUOUS EVENTS

Quiz Sheets:- Available (£1 per sheet) at the Farmers Market or from Cherry Leppard, 29 Albany Road, first prize £25. The answers are placed in the Grapevine and on the Website.

100+ Club:- £12 per year your number is placed in a draw, every month for 1st Prize £25, 2nd £15, 3rd £5 These DOUBLE in December! The draw will take place at the Committee Meeting on the 1st Tuesday of each month. Contact Wendy 259120 for further information

Farmers Market:- Tuesdays 10 a.m. to 12.30 p.m. Approximately 20 stalls selling local produce every week.

FUND RAISING EVENTS

INDOOR BOOT FAIRS 8 a.m. to Noon
31st March, 27th October, 1st December 2013, 26th January, 23rd February, 30th March 2014. Tel:

Wendy 01303 259120 for more information.

CHICORY TIP - 27th April 2013

GARAGE SALE SAFARI - 1st September

CHRISTMAS CRAFT FAIR - 2nd November



100 CLUB WINNERS – February

- 1st - 12, Don Firkin
- 2nd - 123, Pim Scales
- 3rd - 56, Jess Young.



INDOOR BOOT FAIRS

VILLAGE HALL MANAGEMENT COMMITTEE

Registered Charity Number 281.786

8 a.m. to 12 noon. **SUNDAY** 31st March 2013

27th October, 1st December 2013,

26th January, 23rd February, 30th March 2014.

REFRESHMENTS – DISABLED ACCESS

Entrance by Donation to Village Hall Funds

Tel: 01303 259120 visit our web site for further info

www.capel-le-ferne.org email: capelfarmersmarket@yahoo.co.uk



BROWNIES

We have places at Brownies. So if you are aged between 7-10 years old, come and join us.

We go walking, make crafts, cooking, do Badges, have fun days out and lots more. For more info:

Call SANDRA 07818551806

OR SUE 07946134152



Capel-le-Ferne Village Hall

Tickets £8
from 29 Albany Road,
Capel-le-Ferne

Bring your own food & drink
Raffle



CANCER RESEARCH JUMBLE SALE

“Our next jumble sale is on
13th April 2013”.

Don't worry we will remind you nearer the time about who to contact or where to take it. Best wishes to you all and thank you once again for your continued support. The Organisers!

Pro Services – Paul Relf Optimum Services

4 Queen's Lea, West Hougham, CT15 7BJ.

Tel: 01304 214166. Mobile: 07787 910961

Garden & Property Maintenance Services & Handyman

No Job too small

Projects and all types of jobs you need doing in your garden, or inside and outside your home.

I'm friendly, reliable, local and trustworthy.

If you would like to enquire about any job, without obligation, it will be nice to hear from you.

The Valiant Sailor

New Dover Road – Tel 01303 252401 www.valiantsailor.com



Food served 7 days a week. Open daily from 12h00.

Forthcoming events

Mothering Sunday – 10 Mar. Lunch - Pre-booking advisable

Complimentary glass of bubbly for Mum

Easter Sunday – 31 Mar. Lunch - Pre-booking advisable

Easter Egg Hunt and chocolates for the kids



Office, Private Parties, Walkers, Groups, Wedding Anniversaries, Wakes and Bar/Batmitzvahs catered for. Our 34 cover separate restaurant serves a range of freshly prepared meals along with an excellent Roast every Sunday. **Real Ales, Fresh Fish** - good selection of wines available. We prefer to use locally sourced produce.

Forthcoming events

Sat 16 Feb Live Music – Left of the Dial 8.30pm. Wed 20 Feb Open Mike night – 8pm.

Sat 23 Feb Live Music - Barry Goss – 8.30pm. Tue 26 Feb Tune Session – 8pm. Wed 27 Feb Quiz Night – 8.00pm.

Fri 01 Mar Over 40's Singles night. Sat 02 Mar Live Music – Radio Riot – 8.30pm. Sat 09 Mar Karaoke with Zoeoke – 8pm.

Sun 10 Mar Mothering Sunday. Sun 17 Mar St.Patrick's Day. Wed 20 Mar Open Mike night – 8pm.

Sun 24 Mar Live Music - Cultured Pearl – 2pm. Tue 26 Mar Tune Session – 8.00pm. Wed 27 Mar Quiz Night – 8pm.

Sat 30 Mar Live Music - Brad Pittance & The Pirates – 8.30pm. Sun 31 Mar Live Music - Great Mates – 8.30pm.

Management and Staff look forward to meeting you.

CAPEL EVENING W.I.

Hello everyone well another month has gone by and we did get some more of the 'white stuff'. Let us hope it is the last for the time being, if not until the end of this year. The President welcomed all members to our February Meeting and considering it has been snowing we had a good turnout. So thank you to everyone who managed to get there. We also had a new member join us. After the initial business we were introduced to Mr Colin Garner and his assistant who gave us a talk and presentation of 'Hotter Shoes'. It was very informative and explained to everyone when it started to present day. We were then asked questions on the presentation. I think it was to make sure we had stayed awake and were listening. Those who answered the questions correctly received a box of chocolates. Quite a few of our members wore 'Hotter Shoes' and said that they were very comfortable and easy to wear. Myself I have always maintained that they were a bit frumpy for me but I was amazed how forward thinking they had become and the styles are now very modern and evening I will even think about buying some. They also make beautiful leather handbags. So they have even converted me. They have a shop in Canterbury and everyone will be given a warm welcome who goes there. They also had a raffle and presented the winners (3 of them) with a lovely leather handbag each. Kath gave the Vote of Thanks and everyone then had Refreshments. After Refreshments we finished of the rest of the business and then had Members Time which was very amusing. Groups of six persons had to make a up a limerick with one of the following lines. 'There once was an old man from Peru' and 'There was an old woman from Kent'. Everyone was put together the most hilarious limericks you ever heard and it kept everybody laughing their heads off. The competition was anything beginning with 'H' which was an amazing array of items including the winner who was Jan Ardley and her item was a metal 'Hip'.

The Speaker for March Meeting – March 12th will be Mr Philip Whyborn-Brown who will give us a talk on 'My 25 year Role at Dover Castle, Competition Castle Connections. Well, I hope I have not bored everyone this month and remember new members are always welcome.

Capel le Ferne Evening Women's Institute

Meetings are held in the Village Hall, starting at 7.30pm. Visitors are welcome and may attend up to 3 meetings without becoming members.

More information from Jayne Stone 211480

9th March -

Bingo Evening in the Village hall cash prizes

12th March

WI Meeting: Philip Wyborn-Brown - my 25 year role at Dover Castle

9th April

WI Meeting Susan Filby The power of Music

14th May

WI Meeting Sarah Wheeler - Makatono

11th June

WI Meeting Tsuyoko Page - Origami

9th June

WI Meeting Veronica Ashby - Dungeness to Diamonds

13th August

WI Meeting Gehad Homsey - Mercy Ships

10th September

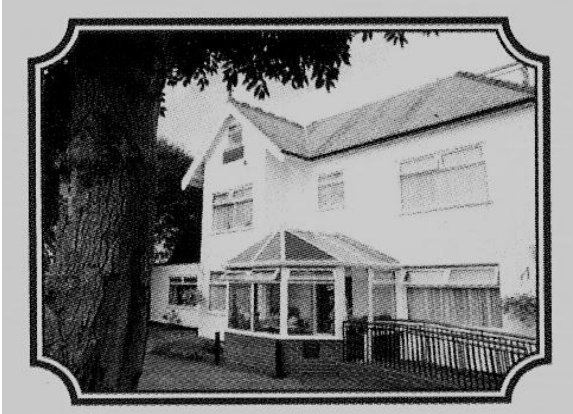
WI Meeting Judi Knight - Wartime fashions

8th October

WI Meeting - Mr D Wilks - Ecuador, Amazonia to the Andes



BRACKNELL HOUSE
Residential Care Home
34 Helena Road, Capel-le-Ferne



24 Hour Staffed Residential Care
Long Term or Respite Care
Family and Friendly Atmosphere
Tel: 01303 254496
Or 07904095747
Email: bracknellhouse@btconnect.com

CAPEL BAPTIST CHURCH

Capel Street. Services 10.30am.

Speakers for MARCH 2013

- 3rd Pam Barr (with Communion)
 10th Colin Patience (Brownie Service)
 17th Rev Chris Ruddell
 24th Richard Blackwell
 31st Easter Day – Colin Patience

ALL WELCOME TO THESE ACTIVITIES

*If there are queries regarding these details,
 please call 01303 251086. Gill Cooper*

*Please! A reminder that the public are requested not to park in front
 of the gates on Sunday mornings as this is a disabled access.*

Insideout cleaning and Maintenance

Carpet and upholstery cleaning

Window Cleaning

Cleaning of debris and leafs from gutters

*Mould removal from conservatory's, fascia and
 gutters. Oven Cleaning*

3 CARPETS CLEANED FOR THE PRICE OF 2

<http://www.cleaning-insideout.co.uk/>

Call for a free quotation

01303 250392 or 07842624786

10% discount

for OAP's



Capel-le-Ferne
Gardeners' Association

The March meeting of the Gardeners Association is the "Home" leg of our annual quiz versus the Hougham Gardeners. It will take place at St Radigunds Church, Albany Road at 7.30pm on 19th March. The monthly competition that evening will be for "One Specimen Daffodil".

Our Spring show will be held at the Village Hall on Saturday 6th April, open to the public after judging is complete about 2.30pm.

**Any enquiries about membership or activities
 call - Mr Gess Harman on 01303-255661.**



Do you have events to publicise?

You can enter them up 12 months ahead.

www.wherewecanwego.com/events/signin.aspx?tab=3

Your events will appear as soon as they are entered and have gone through the House Rules checker. Our Email Alert service sends details of your events to interested users immediately it's posted, and all events are broadcast on Twitter a few days before they happen. Our Facebook page: www.facebook.com/WhereCanWeGo keeps you up-to-date with news and information for event organisers.

Best Wishes - John South, Customer Support

www.WhereCanWeGo.com

HOME TUTORING AND CLASSES

All ages, all levels welcome.

Come on your own or join a group

LEARN A LANGUAGE: French, Spanish, Italian or German. Also - English for foreign students.

MATHS (Numeracy), **ENGLISH** (literacy), age 6 – 18 yrs.

HELP with the **KENT TEST** (11 Plus): Verbal Reasoning, Non-verbal Reasoning and Maths.

I am a fully qualified teacher with many years of experience and a high success rate (97%).

For more information please phone: 01303 226924



CAPEL-LE-FERNE BOWLING CLUB

Boys v Girls: Sad to say the boys lost again, Well done the Girls, But watch out we will get you next year. We have a plan.

East Kent League: The Capel Kiwi's were top of the first division at the beginning of February. They did extremely well against Swaleciffe gaining five points from a possible six. Two more teams to play and with a possibility of finishing in the top three this year, with the help of Rachel's lucky socks and fingers crossed.

Finals Day: The Clubs internal matches are drawing to a close with the finals being played on the 3rd March. All members not playing are urged to come along and give support.

Buns and Bowls: Our Easter Treat Three games of bowls with a break for tea and Hot Cross Buns. Friday 29th March 10.30 to 12.30. Please note the earlier times!!!

Quiz Night: 19th March 7.15pm for a 7.30 start. Everybody is welcome. Teams up to six persons, bring your own food and drinks. Grand raffle and prizes for the winning team! Questions presented by our crazy quiz master Miss Jenny Carter.

Not to be missed. **Presentation Dinner:** Will be on the 20th April, so all members keep this date clear. Gents get your suits out of moth balls and ladies a great excuse for a new frock. Menu will be going up on the club notice board soon.

Jenny Carter 01303 250928

Barry Mansfield 01303 257157

Ros Chandler 01303 255862



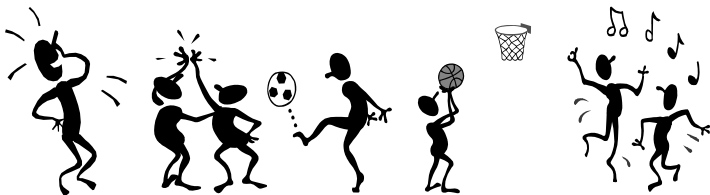
CAPEL-LE-FERNE Youth Club



Every 1st and 3rd Thursday in the month from 7.30pm to 9.30pm.

Please come along and your first evening is free!

Please ensure you collect your children from the hall, not the Car Park, even on light evenings.



We are still looking for additional helpers.

Any help will be gratefully received. Please see one of the Youth Club helpers for more details.

Any issues/queries

Please contact the Chairperson,

Simon on 07860803767 and find us on Facebook to keep up to date with all info about Capel Youth Club.

A S Maintenance

Local Handyman Services



Painting & Decorating
Plumbing
General Household Maintenance

Tel: 01303 884942

Mobile: 07505 134 732

Email: andy@as-maintenance.co.uk

Remember Them

(Proprietor: Mrs Anne Cox)



Independent Provider
of Bespoke Orders of Service
for the Funeral
of your loved one.

Enquiries: 01304 823456 and/or
e-mail: rememberthem2011@gmail.com



Judo I.B.F. Club ET.1978



Capel le Ferne Village Hall - Every Wednesday

Juniors (6-9 years) 5.30pm-6.30pm

Seniors (10 years +) 6.30pm-8.00pm

Senior Coach: Colin Carrott 3rd Dan Tel: 01303 258942

Technical Advisor: Colin Ogburn 3rd Dan

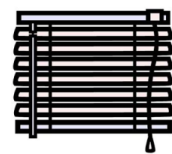
Tel: 07870 822 510. New Members Very Welcome
Up to 5 Qualified, Insured Instructors & Coaches to
give expert tuition.

Come & try this DYNAMIC MARTIAL ART



FITTING CREATIONS

BLINDS - CURTAINS - SHUTTERS



Friendly Family Business

Local to you

01303 894882

07506 144427

www.fittingcreations.com

info@fittingcreations.com



CAPEL-LE-FERNE PARISH COUNCIL

Clerk to the Council
Maureen Leppard
Email: maureen.leppard@btinternet.com
Website: www.capel-le-fernepc.kentparishes.gov.uk

39 Victoria Road, Capel-le-Ferne
Folkestone, Kent. CT18 7LT
Tel: 01303 259564
Mobile: 07813704142

21st February 2013

Regeneration Delivery
Dover District Council
White Cliff Business Park
Dover, Kent. CT16 3PJ

Dear Sir / Madam

Land Allocations Pre –Submission Local Plan

Capel Parish Council is extremely disappointed in how the Land Allocations Pre Submission Local Plan has been communicated to the Parish Council and the Parishioners of Capel Le Ferne, denying the village appropriate time to understand the content of this important document and to ascertain everybody's views and comment accordingly. However, following limited consultation, we respond as follows to the three sites identified within.

3.273 – 3.279 Policy LA21 Land to the South of New Dover Road, between Capel Court Caravan Park and Helena Road, Capel le Ferne

Not acceptable for development

As you correctly identified, the adjacent areas are designated as Heritage Coast, AONB and SSSI and this site has a significant biodiversity value which includes orchids. For these reasons a previous document (CAP04), indicated that this site was rejected by Dover District Council because of its situation. The Parish Council agreed with that decision.

Safety would be compromised - The proposed site is remote from the village and there would not be a safe route from the site to the school or the village without crossing the busy B2011 (New Dover Road), which has a speed limit of 60 mph adjacent to the site. The only footpath in this area is on the North side of the B2011.

Vehicular access to this site would need to be from the B2011 which as you are aware gets extremely foggy due to its location and numerous accidents have already occurred along the B2011. Vehicular movements slowing in this 60mph zone will lead to further incidents, these current risks need to be reduced not increased.

Capel le Ferne does not have the appropriate infrastructure to support such a development, for example the local primary school is already at capacity and unlikely to support the additional education requirements that would be needed.

Any landscaping buffer would not be in keeping with the surrounding area AONB.

3.280 – 3.283 Policy LA22 Land to the North of the Junction of Capel Street and Winehouse Lane, Capel le Ferne

Not acceptable for development

As this site did not appear in the LDF document 2010 the Parish Council has not previously had opportunity to respond. The Parish Council does not accept this as a suitable site for development for the following reasons:

This site has important hedgerows as identified elsewhere within the village and these needs to be maintained and enhanced.

This site offers no footpath connection to the village and its amenities.

Access to the site is narrow and Capel Street has a long history of flooding with runoff from the nearby fields with a number of residences previously flooded.

3.284 Policy LA23 Site between 107 & 127 Capel Street

Not acceptable for development

You identify within your document that the retention of the hedgerow along the front of the site is extremely important combined with an impact on the setting of an AONB. For these reasons this site should not be developed. The retention of the hedgerow contradicts the analysis in the document SHL060 which states: *In order to achieve access to the site any development would require the removal of the roadside hedgerow. Development could have a very urbanising effect on the area relative to the current surroundings, would be unlikely to be in keeping with the character of village and have a detrimental impact on the setting of the AONB.* Additionally, there are only 6 properties on the opposite side of the road fronting this site. Thus indicating how low the density of development is in this part of Capel. The development of 50 dwellings in this site location is certainly not in keeping with the surroundings.

The area has local flooding and drainage issues due to a combination of discharge and run off from the proposed site and adjoining areas. As you are fully aware this has caused the flooding of a number of properties in Capel Street over recent years.

This site is in close proximity to the local Primary School, this point in Capel Street is already extremely congested around key times of the day. The development of 50 dwellings on this site would compound the congestion problem. There is also no footpath access adjacent to this location.

Yours faithfully

M. Leppard

Maureen Leppard, Clerk - Capel Le Ferne Parish Council



The Lighthouse Inn 111 Old Dover Road CT18 7HT

info@thelighthouse-inn.co.uk www.thelighthouse-inn.co.uk 01303 254080



Channel Views, Alfresco Dining, Teas, Coffees, Thai and English Cuisine, Breakfasts, Sunday Roasts En Suite Rooms

Open Weekends only until March 22nd 2013 Fri, Sat, Sun.

**ENQUIRE ABOUT OUR FUNCTION ROOM FACILITIES FOR WEDDINGS, WAKES, BIRTHDAYS, ETC
DOGS ON LEADS ARE NOW WELCOME IN THE GARDEN ROOM**

***MOTHERING SUNDAY* MARCH 10TH 4 COURSE TRADITIONAL ROAST £24.99**

WITH GIFT FOR EVERY MUM! CHILDREN UNDER 10 EAT FREE. BOOK NOW

WE'LL KEEP A WELCOME IN THE LIGHTHOUSE

**ST DAVID'S DAY MARCH 1ST BUFFET WITH SONGS BY WELSH CROONER GARY RICHARDS!
TICKETS £10**

GARY DEAN AND BAND SAT EVENING APRIL 27TH

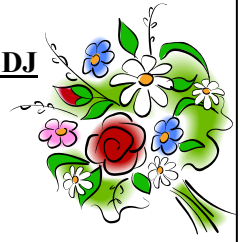
FAMILY FUND RAISING DAY FOR DOVER RNLI WITH KENT RADIO'S DJ

STEVE LADNER

SAT MAY 25TH

BBQ RAFFLES FACE PAINTING PRIZES MUSIC STALLS ETC

ALL CONTRIBUTIONS WELCOME!



**CAPEL-LE-FERNE ACTIVE
RETIREMENT ASSOCIATION**

We have had a busy and past couple of months with all sorts of activities enjoyed, including a New Year Lunch at the Hythe Imperial Hotel which we could recommend to other groups as they served us well. Our first Tuesday monthly meetings in the Village Hall are continuing with a variety of speakers, some from amongst our own membership, with topics such as a Coastwatch presentation, the Donkey Sanctuary, a Seaman's story, researching your ancestry, an author's experience of publishing, Operation Sunshine and again a fashion show later in the year with EWM – all details will soon be on our website: www.capelara.co.uk. Several special events are also planned to give you a taster...a Chocolate Afternoon at St Radigund's Hall on Thursday March 14th (see separate notice), a day trip to De Panne in May, a visit to Biddenden Vineyards in June, a show at the Winter Gardens, Margate in July and a day trip to Eastbourne in August. So, if you think the variety of the above would suit you please do come and join us and be a member of CapelARA.

Are you a Chocoholic
CapelARA is having a Chocolate Afternoon

Thursday March 7th

at St Radigunds Church Hall at 2.30pm

We will also enjoy a Tea/Coffee with Cake.

Normal £1.00

We have a delightful lady coming to visit. She will be bringing a wonderful selection of Chocolate Items. There will be items to cover Easter and Mothers' Day plus all other occasions. These will be for sell and tasting a sample will take place. Gentlemen come take a look and perhaps treat your lovely lady.



Capel Twinning Association

Capel Twinning Association held its AGM in February. The annual and financial reports were presented and showed CTA to be active and financially sound. A new committee was elected with Bill Heath as Chairman, Kath Rudman as Treasurer and Jayne Stone as Secretary. A varied programme of events is being arranged for 2013, starting with;

- A social event (and wine tasting) on 22nd of March in the church hall at 7.30. Please let Bill, Kath or Jayne (01303 211480) know if you will be joining us.
- For May a trip to France is being planned.
- Later in the year the BBQ will be at the church hall, other events include a visit by friends from Oye-Plage.

New members are always welcome - at £5 for the year it's a bargain!

FARMERS MARKET NEWS - FIND US ON FACEBOOK!**THE TASTE OF KENT AWARDS 2013 Unfortunately we didn't win, maybe next year!****After all WE know we're the best! Our thanks go to everyone who voted for us.****Despite the snow, ice and cold conditions we have been having recently, the market still remains busy thanks to all our loyal customers.****Our Easter Special will be held on 26th March, with competitions and Easter Bonnets!**See our Facebook page or visit our website www.capel-le-ferne.org for further information.The Easter Special will be held on 26th March, with stallholders, organisers & helpers in Easter Bonnets, there will be a 'Find the Easter Egg' competition for the children, and a Spring Flower Decoration Competition for the adults.We are in the process of organising our 10th Anniversary Event now, which will be held on 23rd April – St. Georges Day, several surprises in store! We have also been asked to attend the Shepway Airshow Event at the Battle of Britain Memorial on 8th June, when we hope some of our stallholders will be able to attend.**A SPECIAL DATE FOR YOUR DIARY****Capel-le-Ferne Farmers Market celebrates their 10th Anniversary on Tuesday 23rd April 2013.**

As it happens to be St. Georges Day also, we will be celebrating in Red and White. Do come along and join in the fun.

The Battle of Britain Memorial Trust will be attending, as being part of our community, as well as some of the Capel-le-Ferne Primary Schoolchildren in fancy dress. The Chairman of the Kent Farmers Market Association will also be attending and presenting a Certificate for our achievements. A free Draw Ticket will be given to every Customer for a chance to win a voucher to spend at the market. Other plans are still being made for a few extra surprises too!

Our regular stalls will be attending with their Local produce – which include; meat, fish, vegetables, fruit, eggs, delicatessen, bread, cakes, pastries, olives, preserves, jams, pickles, local honey, European, South African & Italian cuisine, smoked fish, cheese & meat, confectionary, ice cream, plants & pet food, jewellery, painted glass & photo cards. In addition, we have an on-site photographer for portraits and passports etc.

Herbert's Confectionary & Ice Cream have now joined us with their wide range of sweet treats and famous Gypsy Tart Ice Cream. Also The Pet Sitter with their wide variety of Pet Food. – do come along and give them a try. In addition to these, Vine Crafts are diversifying and are now called Olives For You, providing an assortment of Olives, Sun Dried Tomatoes & Garlic etc. Mogador, (European dishes) is doing well, as are Smoked & Spice (smoked cheese, fish & meat) and Go Feast now producing South African dishes. Damari's (Italian dishes) and Eureka House Products providing an assortment of sauces and condiments have unfortunately pulled out temporarily, but hope to return in the Spring.

A Newsletter is sent out to many interested parties,**and is also added to our FACEBOOK page.****If you would like a copy, please e mail capelfarmersmarket@yahoo.co.uk.****We are still looking for help with setting up and clearing away, on a rota basis.****If you feel you could help us in this way, please contact Jenny or Cherry.**Please note: The products for sale are produced (in the majority of cases) by the stallholder, in Kent, unless clearly marked otherwise. Our present products are:- Fish, Meat, Eggs, Preserves, Jams, Honey & Pickles, Delicatessen, Smoked Fish, Meat & Cheese, European, South African & Italian dishes, Bread, Cakes & Pastries, Olives, Vegetables, Fruit, Sweets, Ice cream, Fruit Liqueurs, Pet Food, Plants and a few Crafts. We are thrilled that James Taylor Photography, has returned, after a very long illness, with his portable studio for portraits, passport, driving licence photos etc, printing your holiday snaps etc. in the small hall. We should point out that we ensure our producers hold the relevant certificates i.e. a public liability insurance and, where necessary, health and hygiene certificate and kitchen registration documents.***PLASTERING*****Fully Insured****All Aspects of Domestic Plastering,
Drylining, Coving & Rendering
Tidy, Friendly & Reliable.****For a free quote contact:
Luke Holness****Mob: 07570 782216
Tel: 01303 255679**

SHEPWAY DRIVING SCHOOL ★★★★★

WWW.SHEPWAYDRIVINGSCHOOL.COM

07772 775564

HYTHE, FOLKESTONE, DOVER
& ALL SURROUNDING AREAS

SPECIAL INTRODUCTORY OFFER
£80 FIRST 5HRS*

*NORMAL RATE ONLY £21 PER HOUR





Happy Easter!

Capel Outdoor Recreational Facilities Update Olympic & Jubilee Legacy



Happy Easter!



Follow link below to view Proposed Community Project News and pictures on Parish Council website

<http://www.capel-le-fernepc.kentparishes.gov.uk/default.cfm?pid=news&newsid=12002>

FURTHER UPDATE IN NEXT GRAPEVINE



**The Old Harveians' Association
Present**

THE RAILWAY SWING BAND

**In concert at
The Harvey Grammar School
Folkestone
on Wednesday 6th March 2013
at 7.30pm**

*All the popular music of the big
band era*

TICKETS £10

To reserve your tickets phone:

John Oliver Event co-ordinator for OHA
on 01303 251403 or e-mail john.oliver@talktalk.net or
phone Harvey Grammar School on 01303 252131 or
E mail to enquiries@harveygs.kent.sch.uk

To report any concerns you have call
Trading Standards Advice and Education, Telephone
08454 040506.

Email tsadvice@kent.gov.uk.

www.tradingstandards.gov.uk/kent

*If you would welcome notification of the Trading
Standards alerts received by Parish Council, please send
your email address and confirmation to
maureen.leppard@btinternet.com.*

*You will then be entered into the Parish Clerk's database
and they will be forwarded as and when received.*

Stone paving for sale £25 per sq metre.
Delivered local.

Swinge Hill Cottage
at the bottom of Hurst Lane.

eEmail kevinalden@tiscali.co.uk

Tel: 01303 254696 Mobile: 07860 379472

As soon as please..... Kev Alden

CAPEL-LE-FERNE PRIMARY SCHOOL

Capel Street, Capel-le-Ferne, Folkestone
CT18 7HB



**Security and Maintenance Officer
12.5 Hours per week**

(7am – 8am and 4.30pm – 6pm)

Start date: TBC

Salary: Kent Scheme 3

£14,241 to £16,144 per annum pro-rata.

An induction and training programme
will be provided for the successful candidate.
This post is subject to an Enhanced Disclosure
Application to the Criminal Records Bureau. We
are committed to safeguarding and promoting
the welfare of children and young people.

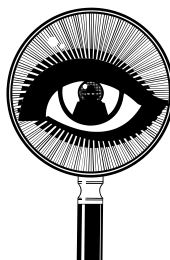
Applications from Capel village welcome.

For more information and an application form,
please contact the school office on

Tel: No: 01303 251353. Fax No: 01303 246495.

Email: office@capel-le-ferne.kent.sch.uk

**Closing date for applications
Monday 11th March 2013**



Samaritans

Murder Mystery Evening

13th April, 2013

7.30p.m. £5 per head.

Capel Village Hall.



USEFUL CONTACTS INCLUDING ACTIVITIES & CLUBS	CONTACT NAMES	TELEPHONE NUMBER
Community Warden	Ms Chantal Blythe	07977 981994
Parish Council Clerk	Mrs Maureen Leppard	01303 259564
Webmaster	Mr Peter Jones	01303 248149
Chairman, V. H. Committee	Mrs Jayne Stone	01303 211480
Vice Chairman “	Mr Jerry Watson	01303 258865
Secretary “	Mrs Cherry Leppard	01303 255114
Treasurer “	Mrs Jenny Carter	01303 250928
Lettings Secretary “	Mrs Joan Woodsford	01303 252354
Minutes Secretary “	Mr Gerry McCann	01303 850332
Maintenance “	Mr Derek Jeffrey	01303 259842
Trustee “	Mrs Jenny Barraclough	01303 245399
Trustee “	Mrs Julie Young	01303 259734
Trustee “	Mr Mike Stone	01303 211480
Trustees “	Mrs Sue McCann	01303 850332
Trustee “	Mrs Pim Scales	01303 254464
100+ Club	Mrs Wendy Leeming	01303 259120
Farmers Market	Jenny & Cherry	245399/ 255114
Boot Fairs	Mrs Wendy Leeming	01303 259120
Village Hall Quiz Sheets	Jenny & Cherry	245399 / 255114
Table & Chair Hire	Mrs Jayne Stone	01303 211480
Noticeboard (£1 per month)	Committee Members	
Divas Dance	Miss Rebecca Uden	01303 893650
Brownies	Mrs Sandra Sharpe	01303 241767
Guides	Miss Rachel Chandler	01303 210702
Youth Club	Mr Simon Withey	07860803767
Playgroup	Mrs Alison Cloake	07977 838609
Judo	Mr Colin Carrot	09850 548769
Capel Active Retirement Association	Mrs Sally Solly	01303 250144
Short Mat Bowls	Mrs Ros Chandler	01303 255862
W.I.	Mrs Vad Blake	01303 241399
Fit Friends - Pilates	Mrs Pam Vivien	01303 244322
Keep Fit	Mrs Karolin Taylor	01303 246887
Zumba Fitness	Tuesday&Thursday6pm.	07411966582
Capel Ramblers	Mr Bob Mothersele	01303 250931
Gardeners Association	Mr Gerald Harman	01303 255661
Bridge (Sunday & Tuesday)	Adrian & Judy	01303 245521
Bridge (Fridays)	Mr Bob Jones	01233 756362
Art Group, St.Radigunds Church Hall	MrAhmed Ovais	01303 242670
Art Group, St. Radigunds Church	Mrs Susan Dootson	01303 243508
Remote Control Car Club	Mr Derek Jeffrey	01303 259842
St. Radigunds Players & Choir	Mr Colin Blake	01303 241399
Twinning Association	Mrs Jayne Stone	01303 211480
St. Radigunds Church		
St.Radigunds Church Hall Bookings	Steve Lennard	01303 670445
Capel Baptist Church	Mrs Gill Cooper	01303 251086
Welcome to Village Letter	Mrs Debbie Catling	01303 251525
Dog Walkers	Mrs Pam Sheppard	01303 243832 (eve)

Please let me know if I've left anyone/anything out!
Or if any details are Jenny 01303 245399



Capel-le-Ferne Playgroup

The Village Hall, Lancaster Avenue,
Capel-le-Ferne, CT18 7LX
capelpreschool@btinternet.com
Running for over 40 years

Ring Alison on 07977838609 or drop in during one of our sessions.

A few vacancies available

***** Ofsted 2010 - Outstanding environment and good in all other areas. *****

Open Term Time - mornings Monday, Wednesday, Thursday and Friday.

Capel Chimney Sweep Services

No dust, mess or fuss!

Fully Insured service for
all your chimney needs.

Complete service, sweep and vac.

Telephone Dave

on:

07896 282093 or

01303 231313

Institute of Chimney Sweeps Certificate
(ICS) qualified. Chimney safety
certificates issued for compliance with
your home insurance.



CAPEL-LE-FERNE WEBSITE

www.capel-le-ferne.org

Please could all Clubs & Societies in the Village, regardless of where and when they meet, send regular updates plus contact information to our Webmaster. Also all forthcoming events, in fact any information of interest in the village, i.e. local events, history, local celebrities, family searches etc. The website is proving very popular, receiving many enquiries. Current information is important and it cannot be updated without your help. It is a mine of information, especially for anyone new to the village. All event posters are placed on there to be downloaded by anyone wishing to display one. If you have ANY photographs of Capel, your club, events, history, the area etc. please forward them for inclusion in the Gallery of Images. Contact Peter at:

28 Helena Road, Tel: 01303 248149 Email:
webmaster@capel-le-ferne.org



**Mobile
Library
Every
Tuesday**



Old Dover Road 10.25am - 10.40am
Victoria Road 10.50am - 11.20am
Reece Adams House 11.25am - 11.55am
Village Hall 12.00noon - 12.30pm

Simpson Aerials

Your local aerial installer

We install, repair and tune all TV and
Radio Aerials and Satellite, including
Freeview, Freeview Plus, Freesat and
Freesat plus. Est: 1988



Call Peter on



01303 250360 or 07971807150



All Computer Problems Solved

Tel: 01303 241325 Mob: 0796 8129 902

Usual Fee £35

*PC's/laptops available - New & Recons.

*PC's setup with Internet, Email, Security & Office Programs

*Upgrades and repairs

*Web sites built & hosted from £7 per month.

*Tuition available by a qualified tutor

Ring Tony for a fast and friendly service

See www.kimcomputers.co.uk for details

www.villageyak.co.uk

Roger Crowther

rwcrowther@btinternet.com

Experienced and fully qualified Handyman

For free estimate tel.

01304 822649

07543 852682

All jobs, large or small.

5% discount for OAPs.

References available.



Carpentry, painting & decorating, tiling, misc. electrical and plumbing works, garden structures, odd jobs and repairs.

Absolute Security LOCKSMITHS

Opening hours: Mon-Sat 9am – 6pm

No call out charge – 24 hours, 7 days

All types of locks, open-supplied-fitted

Boarding Service - Emergency Repairs.

Key Cutting. Domestic & Commercial. Shutters, Grilles, Bars, Safes. Video/Audio Entry Systems.

Fitting Service Available.

01303 210057 / 07887652507

G B Haworth



Painter & Decorator

Interior & Exterior

Free Estimates Capel - 244206

GRAPEVINE ADVERTISING from 1st April 2013

This space could be advertising your commercial/business venture or, non-village organisation event.

Size 9cm x 3.5cm £ 9.50 Size 9cm x 7cm £14.50

Size 9cm x 13cm £20.00. Size 20cm x 13cm £36.00 (½ page)

Payment in advance. Cheques payable to

Capel-le-Ferne Parish Council

For further details contact Parish Clerk at 39 Victoria Road,
or Tel: 01303 259564. Email: maureen.leppard@btinternet.com

CAPEL VEHICLE SERVICES

All makes of cars serviced and repaired.

MOT repairs, mechanical and welding.

Tyres, Exhausts, Batteries & Towbars

Supplied and fitted

Competitive rates. No VAT.

Friendly efficient service

Call John Horne 01303 255894 or email:

Johnhorne@amserve.net

Local free collection and delivery available if required
MOTs

award
winning
driveways

Local Council
Approved
Contractors

2008/2010 MARSHALLS SOUTHEAST AWARD WINNERS & 2008 NATIONAL AWARD WINNERS

New 2012 block paving ranges from Marshalls now available

- All types of paving (driveways, patios, pathways) • Full driveway & dropped kerb packages
- Bricklaying & retaining walls • Resin-bonded gravel • Tarmac & concrete • Dropped kerbs

CAPEL
groundworks



Contact us for a free quote
T: 01303 253437 M: 07788 146673
capelgroundworks@btinternet.com
www.capelgroundworks.co.uk

CAPEL BRICKWORK SERVICES



- GARDEN WALLS • RETAINING WALLS
- GARAGES • GROUNDWORKS / EXTENSIONS
- RE-POINTING • ALSO DRIVES & PATIOS ETC

Family Run Business for Over 25 Years

Customer references Available

TEL: 01303 770496 MOB: 07825 291692

Do you

1. Need an extra telephone point in your house?
2. Need to relocate your existing telephone points to a more convenient place?
3. Need network cabling or system installation for your business?



For excellent rates call JOHN @ j.waller.services.

Fully qualified ex BT engineer with 12 years experience.

07766 068100 01304 225420

www.j-wallerservices.co.uk

Half the price of BT OPENREACH GUARANTEED

Recycling/Waste Collection Dates:

Food Waste, Rubbish & Green Waste

Friday, 8th and 22nd March

Food Waste & Recycling

Fridays, 1st, 15th and 29th March.

Items for April issue to be with Maureen Leppard (Parish Clerk) at
39 Victoria Road, Capel-le-Ferne CT18 7LT, (Tel: 01303 259564) or
Email: maureen.leppard@btinternet.com by 6pm, Sunday, 17th March 2013



Hello from South Kent Coast Clinical Commissioning Group

South Kent Coast Clinical Commissioning Group

We write to formally introduce South Kent Coast Clinical Commissioning Group (CCG) which will become a statutory body from 1 April 2013, replacing the Kent and Medway Cluster PCT.

We will be responsible for commissioning healthcare for the residents of the South Kent Coast area and our vision is to have the best health and care for the South Kent Coast Community.

Unlike previous NHS commissioning organisations we are clinically led and our contribution brings together all local GP practices across Deal, Dover and Shepway as members of the CCG.

Dr Darren Cocker is the Clinical Chair. The staff supporting Darren and our clinical members is led by Hazel Carpenter, Accountable Officer, who is supported by Karen Benbow, Chief Operating Officer, Jonathan Bates, Chief Finance Officer and Bethan Haskins, Interim Chief Nurse.

We will move to our new offices in Dover on Monday 11 March 2013 where our contact details will be:

Dover District Council, Council Offices, White Cliffs Business Park, Whitfield, Dover CT16 3PJ. Tel: 03000 424700.

Email: southkentcoast.ccg@nhs.net

Website: southkentcoastccg.nhs.uk

Our Board will meet in public from May and you are all most welcome to attend and contribute to helping us commission high quality, good value accessible services for South Kent Coast.

The Board meets between 2pm and 5pm and the dates are:

22 May 2013 Dover Town Hall

24 July 2013 Dover Town Hall

25 September 2013 Dover District Council

27 November 2013 Dover District Council

All staff will be contactable from 10 March 2013 using the above information. In the meantime we can be contacted on

01233 618 362 or at southkentcoast.ccg@nhs.net.

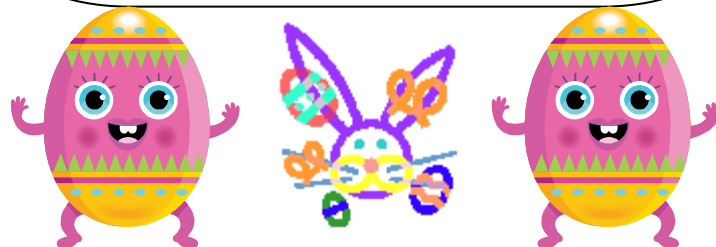
Darren Cocker - Clinical Chair

Hazel Carpenter - Accountable Officer

Templar House, Tannery Lane, Ashford, TN23 1PL

South East Kent Coastal CCG (covering the Dover and Shepway districts) - meetings are open to the public and you are welcome to attend and listen. The next meeting is to be held on 9th April 2013 at Dover District Council offices between 3.30pm and 5.30pm. Details of these meetings are on the DDC website.

Jan Perfect, CEO, CASE Kent, Berwick House, 8 Elwick Road, Ashford, Kent TN23 1PF. Tel: 01233 610171
website: www.casekent.org.uk



Energy Deal

SWITCH together
to save £s on your bill



Looking for a better Energy Deal?

Dover District Council (in partnership with other Kent Local Authorities) is setting up a collective switching scheme to help households in the district to get a better deal on their gas and electricity bills.

Collective Switching

Bulk buying can enable you to get a better price for goods, energy is no different. By grouping together you can potentially negotiate an even better tariff.

Energy Deal

Dover District Council has joined up with Tunbridge Wells BC, Dartford BC and Gravesham BC to set up a Collective Switching Scheme called Energy Deal.

Residents provide information about their energy (gas and electricity) usage, and current tariff. Registration is free and without any obligation to switch.

At the end of the registration period an auction will take place, and the energy supplier offering the best 'energy deal' will be appointed.

All those residents that registered will then be contacted with their individual energy offer. It is then up to the individual whether or not they accept the offer.

Energy Deal will be launched (registration open) in Spring 2013, however if you are interested in finding out more log onto Dover District Council website energy pages http://www.dover.gov.uk/environment/energy_advice/cut_energy_bills.aspx and leave your details.



DOVER CHORAL SOCIETY

THE CREATION (Haydn)



**THE CONNAUGHT ORCHESTRA
(Leader - Amanda Wyatt)**

and

**DOVER CHORAL SOCIETY
CONDUCTED BY
STEPHEN YARROW**

**DOVER TOWN HALL
Saturday 23 March 2013 - 7:30 pm**

TICKETS £12 (students £6) AVAILABLE AT THE DOOR
FROM DOVER TOURIST INFORMATION CENTRE
(DOVER MUSEUM - MARKET SQUARE)
MEMBERS OF DOVER CHORAL SOCIETY OR CALL 01304 820149

www.doverchoralsociety.org.uk

Monday 11 February 2013, the Government published a consultation on revised policy setting out the role of the strategic road network in enabling economic growth. The new policy will replace Circulars Circular 02/2007 Planning and the Strategic Road Network, and DfT Circular 01/2008 Policy on Service Areas and other Roadside Facilities on Motorways and All-purpose Trunk Roads in England. The consultation can be found at - <https://www.gov.uk/government/consultations/consultation-on-the-strategic-road-network-and-the-delivery-of-sustainable-development>

Your views on the proposals would be gratefully received.



**“Hold a Fish and Chip Supper to help
spinal cord injured people live full and independent lives.”
Great British Fish and Chip Supper – Friday 17th May 2013**

Want to do something different? Want to raise money where you live or work? Want to eat Fish and Chips, while raising money for charity? Hold a fish and chip supper on Friday 17th May 2013 whilst raising awareness of spinal cord injury and supporting SIA's information and support services.

You can hold a fish and chip supper in your own home, at work or hold a larger supper at your local community centre. SIA will provide a fundraising pack containing hints and tips, recipes, invitations and donation envelopes. By inviting 7 friends and asking them to donate an additional £5.00 means you will raise at least £35.00 from your supper but we will also give you additional fundraising ideas to raise even more money for SIA. Since 2009 we have raised over £20,000 and it has become our flagship community fundraising event. We want to raise £10,000 from this event in 2013 we can provide more support to spinal cord injured people. The money raised from the suppers will help the Spinal Injuries Association offer support to individuals who become paralysed and their families, from the moment a spinal injury occurs, and for the rest of their lives by providing services and publications which enable and encourage paralysed people to lead independent lives. Every year in the UK over 1,000 people experience a spinal cord injury and there are an estimated 40,000 spinal cord injured people in the UK alone. Community Fundraising Manager, Elizabeth Wright, says, “The Fish and Chip Supper is a wonderful opportunity for a great evening with friends and family. We are also encouraging people who work to hold a Fish and Chip Lunch in their work places to raise even more funds. You may be even a local community group wanting to run a fun evening with your group. Be a part of something special and make a real difference to help spinal cord injured people gain access to the information and support they need to enable them to live full and independent lives.”

For more information or request a fundraising pack call Elizabeth Wright on 0845 071 4350 or
email fundraising@siafishandchips.co.uk or visit www.siafishandchips.co.uk

We have had a request from a Belgium programme that give fun and alternative travel advice. They would like to visit Kent to focus on English gardens with a twist and are looking for:

- A beautiful small private garden open to the public
- A private garden open to the public with something special e.g. one kind of flower/plant, one color, rare flowers

If you are aware of gardens that match the above descriptions, do let us know.

Please feel free to pass on to anyone you know that may have a suitable garden that is open to the public and ask them to email the Kent Film Office on filmooffice@kent.gov.uk with information/pictures of their gardens that are open to the public.

Kind regards, Hannah Lucey

KENT FILM OFFICE

0300 333 5656 www.kent.gov.uk/filmooffice

A Great Opportunity!

We are talking to the Landmark Centre on Deal High Street about “adopting” the outdoor space there. We think this could be a very exciting opportunity to create a “cottage” style garden in the centre of town with flowers, fruit, herbs and some vegetables. This would not only make the Landmark Centre much more attractive but we think it would be a very worthwhile addition to the town, and help to enliven the High Street. It would also be a great community project, bringing people together to improve the town for all of us.

We are thinking of doing it as a gardening club, open to all to join (not just DWI), so if you would like to get involved please email me **asap**; whether this happens will depend on you and the response I receive! We would like to involve people of all ages, so even if you are too young to know anything about gardening, or too old to wield a spade any longer, please feel included as we are sure you will have something to contribute. **Rosie Rechter, Email: dealwithittoday@yahoo.co.uk**

“INFORMATIVE”

A GLOBAL AIRPORT FOR KENT?

Conference at County Hall, Maidstone on Friday 22 March 2013 commencing at 9.30am (Registration from 8.45am)

We have been approached by the Kent Federation of Amenity Societies (KFAS) to highlight its forthcoming conference “A Global Airport for Kent”, which is taking place at County Hall, Maidstone on Friday 22 March. Speakers include Paul Carter (Leader of KCC), Daniel Moylan (Mayor of London's Aviation Adviser), Rodney Chambers OBE (Leader of Medway Council) and Professor Roger Vickerman (University of Kent). The cost of the conference is £15. Further details from KFAS are set out below. Kind Regards, Terry Martin, County Secretary, Kent Association of Local Councils, 01303 284252. *Please book your places! With best wishes, Crispin Davies, KFAS Secretary, 7 Ormonde Road, HYTHE, Kent CT21 6DN. Telephone: 07812 581850. Email: crispinandsue.davies@talktalk.net Web: www.kfas.org.uk*

A consultation on revised policy, setting out the role of the strategic road network in enabling economic growth.

The new policy will replace Circulars Circular 02/2007 Planning and the Strategic Road Network, and DfT Circular 01/2008 Policy on Service Areas and other Roadside Facilities on Motorways and All-purpose Trunk Roads in England.

The consultation can be found at - <https://www.gov.uk/government/consultations/consultation-on-the-strategic-road-network-and-the-delivery-of-sustainable-development> Your views on the proposals would be gratefully received.

Regards, Iain Reidy, Policy and Procedures Advisor, Highways Agency | The Cube | 199 Wharfside Street | Birmingham | B1 1RN.
Tel: +44 (0) 121 6788721. Web: <http://www.highways.gov.uk> GTN: 6189 8721

Kent Minerals and Waste Local Plan: Proposed Mineral Safeguarding Areas

We are producing a series of topic papers to inform the production of the new Kent Minerals and Waste Plan. These topic papers will provide detailed information on key mineral and waste topics for sustainable mineral and waste management issues in Kent over the 2013-2030 plan period. The latest draft paper focuses on the important subject of mineral safeguarding in Kent.

The document will be open for comment from 11th February to 4th March 2013 and will be publically available on our [website: http://www.kent.gov.uk/environment_and_planning/planning_in_kent/minerals_and_waste/evidence_base/mineral_safeguarding.aspx](http://www.kent.gov.uk/environment_and_planning/planning_in_kent/minerals_and_waste/evidence_base/mineral_safeguarding.aspx) and [consultation portal: http://consult.kent.gov.uk/portal/evidence-base/min_safegd](http://consult.kent.gov.uk/portal/evidence-base/min_safegd) We recommend you submit your views through our online [consultation portal](http://consult.kent.gov.uk/portal/evidence-base/min_safegd). Alternatively, you can also email your comments to mwdf@kent.gov.uk or write to us at MWLP Project Team, Planning and Environment, Kent County Council, Invicta House, Maidstone, Kent ME14 1XX.

“INFORMATIVE”