



GRAPEVINE

Capel-le-Ferne Village Newsletter
DECEMBER 2012 - ISSUE NO: 211



CAPEL-LE-FERNE PARISH COUNCIL

Some of the items discussed at the meeting on Tuesday, 20th November 2012.

- **Household waste in street bins:** It was agreed we continue to be vigilant and keep an "eye on the ball" and ensure that fly-tipping in the street bins does not occur. Especially those bins provided for the use of the public. If we want to eliminate dog fouling, we must be able to provide enough room in these containers that are safe and secure, for the purpose.
- **Historical black-board at Playing Field:** Dover District Council to be contacted further on the renovation.
- **CCTV Cameras at Village Hall/Playing Field:** To be extended & agreed by those present.
- **Newly installed Noticeboards:** It was agreed, suppliers to be addressed on the condensation problem occurring inside.
- **Clearance of overgrown vegetation:** Thanks expressed to Veolia and their staff for the service provided recently at Playing Field, free of charge. Letter of appreciation would be sent.
- **Kent Highways:** Repairs to lighting carried out at Playing Field, Lancaster Avenue and Beatrice Road following reporting to their on-line system.
- **Speeding B2011:** Kent Police and Community Warden would continue monitoring, with a view to providing statistics to Kent Highways to change signage arrangements.

Next Parish Council meeting is on Tuesday, 18th December at 7.30pm in the Village Hall (Small Hall).

Further information on any of the above or to contact Parish Council, please write to Parish Clerk, 39 Victoria Road, Capel-le-Ferne.

Tel: 01303 259564. Email: maureen.leppard@btinternet.com - Or visit our website www.capel-le-fernepc.kentparishes.gov.uk

*The Parish Councillors and Clerk would like to wish everyone
A Very Merry Christmas and a Happy New Year.*



**ST RADIGUND'S CHURCH
CHRISTMAS BAZAAR
AT THE CHURCH,
Albany Road, Capel-le-Ferne
SATURDAY,
1st DECEMBER
10am – 1pm**

Waste collections in the Dover District over the Christmas period.

The arrangements are as follows:

Food Waste, Rubbish & Green Waste: Week commencing 24th December:

Normal collection day	Revised collection day
Friday 28 th December	Saturday 29 th December

Week commencing: 31st December: Collection days will remain unchanged.

Garden waste collections will then stop for two weeks from Monday 31st December to Friday 11th January 2013 (inclusive).

See back page for more dates & details.



**CAPEL A.R.A.
Invite you to a
Coffee Morning**

Thursday 6th December

Thursday 6th December
At St Radigunds Church Hall,
10.30am to 12 Noon

Please come and join us for coffee

Edinburgh Woollen Mill

will be joining us with a lovely selection of their goods, and offering discounts on purchases Discount Vouchers will also be offered, for use in their shop. Great ideas for Christmas: i.e. Gloves, Scarves, DVD, Reusable shopping bags, Jewellery, Slippers etc. Members and Non Members are welcome. Would you like to join our club? This is an ideal opportunity to chat and find out more about the things we do.



**Capel-le-Ferne Primary School
Parents' & Friends' Association**

Capel Street, Capel-le-Ferne

Tel No: 01303 251353. Fax No: 01303 246495

Email: office@capel-le-ferne.kent.sch.uk

**CHRISTMAS FAYRE IN SCHOOL HALL, CAPEL STREET
SATURDAY, 8th DECEMBER. 10.00am - 1.00pm
CRAFT TABLES, TOMBOLA, GAMES, REFRESHMENTS
Further details contact school.**



*If you know the details of your event in advance, please let
Parish Clerk know so organisations avoid booking same date*

"WHAT'S ON" IN CAPEL-LE-FERNE

1 st Dec	St Radigund's Xmas Bazaar @ The Church (page 2)
2 nd Dec	Indoor Boot Fair (Page 3)
6 th Dec	Coffee Morning, St Radigunds Church Hall – (page 9)
8 th Dec	Christmas Fayre (PFA) @ Capel Primary School
9 th Dec	CAROL SERVICE @ VILLAGE HALL, 3pm
18 th Dec	FARMERS MARKET CHRISTMAS SPECIAL (pg 10)
27 th Jan	Indoor Boot Fair (Page 3)
24 th Feb	Indoor Boot Fair (Page 3)
31 st Mar	Indoor Boot Fair (Page 3)
27 th Apr	Chicory Tip (Page 3)
11 th May	Youth Club Quiz Evening @ the School 7pm
6 th Jul	Capel School Summer Fayre





**CAROL SERVICE
9th December 3pm
in The Village Hall**

A Joint informal service from
St. Radigunds Church and
the Baptist Church to celebrate
the festive season.

Tea & Mince Pies will be available.



Benefice Services for DECEMBER 2012

Date	Alkham	Capel	Hougham
Sunday 2nd	Evensong 4:30pm	Sung Eucharist 9am	Worship Tog'r 11am
Sunday 9th	Sung Eucharist 9am	Worship Tog'r 11am	
Wednesday 12th		Licensing of Revd. Brian Williams 7pm	
Sunday 16th	Nine Lessons & Carols 6:30pm		Sung Eucharist 9.30am
Sunday 23rd			Benefice Eucharist 10am
Monday 24th Christmas Eve	Crib Service 4pm Sung Eucharist 11:30pm	Crib service 2.30pm Sung Eucharist 11:30pm	
Tuesday 25th Christmas Day		NO SERVICE	Sung Eucharist 9:30am
Sunday 30th		Benefice Eucharist 10am	



It is with much pleasure that the parishes of Capel, Alkham and Hougham welcome The Rev. Brian Williams and family. Brian will be our new priest and will live in The Vicarage in Alexandra Rd. He will be licensed and installed at **St Radigund's Church at 7.00pm on Wednesday, 12th December.** I'm sure you will all welcome them and sympathise with them having to move so close to Christmas, although we are all delighted to have our own priest once more to take the Christmas services. Colin Blake.



The Christmas rush is well and truly on, and like everyone else we are busy with shopping, writing cards and everything else that happens at this time of year – as well as moving house. The Christmas Story tells of how Mary and Joseph travelled from their home at Nazareth to Bethlehem – a young couple expecting their first child, faced with a long journey. It is not too difficult to imagine Joseph scratching his head, having to decide what to take and what to leave behind – what they would need on the journey, and what they would need when they arrived at their destination. As Christmas approaches a slightly older couple and their teenage son will be moving from their home in Cheriton to the Vicarage at Capel-le-Ferne. Hopefully we, the rabbit, a family of cockatiels and various pet fish will be settled by the time Christmas finally arrives. Far from being over, our journeys will be continuing – my wife Angela to the store in Cheriton where she has worked for some years now, our son David to his A Level studies in Canterbury, and on certain days me to my other job as a supply teacher – which can take me anywhere between the Isle of Sheppey and the Isle of Thanet. Alongside all this, I shall be beginning a new phase in my ministry as the new priest for Alkham, Capel and Hougham.

Mary and Joseph must have had mixed feelings about their journey – the upheaval, the wondering what was going to happen, but also the excitement of going to new places, meeting new people and doing new things. We, too, are facing upheaval, but are still excited at the prospect of meeting new people, making new friends and doing new things.

Mary called her baby Jesus – meaning *God with us*. The Christmas Story teaches that whatever upheavals we face in life, we do not have to face them alone. Just at the moment, I am also thinking that it might have something to teach us about how much clutter we surround ourselves with, and how much simpler life would be if everything of any importance could fit on the back of a donkey.

In the meantime, a very Happy Christmas and a peaceful New Year to you all. *Brian Williams*

The Friends of St Radigunds, Capel-le-Ferne

We completed our 2nd Friday of the month evenings on 9th November, with a welcome back to the Rev Canon Gill Calver. It was a lovely evening for her to meet up with all her old friends back here in Capel, Hougham and Alkham and a good number attended. As expected, her talk was humorous and very interesting, telling us about some of the experiences of her fascinating life as Rector of Staplehurst, Canon of Canterbury Cathedral and as a Queen's Chaplain. There are only 30 Queen's Chaplains, only eight which are women, so it is a highly prestigious post.

Our committee will have met to agree the programme for next year by the time you read this article, so watch this space in the next Grapevine. This year's programme has been highly successful and next year's looks just as attractive and will help us to complete all outstanding matters to do with the Church Hall.

Thank you for your support to our evenings. If you haven't joined us yet, then you are most welcome to do so in 2013.

John Oliver, Chairman - The Friends of St Radigunds Capel-le-Ferne

22, Albany Road, Capel-le-Ferne - 01303 251403 or e mail to john.oliver@talktalk.net.

The Old Harveians Association will present The Railway Swing Band in a concert at The Harvey Grammar School for their 4th Annual concert on Wednesday, 6th March 2013.

Tickets are £10 and are available from John Oliver on 01303 251403 or
email john.oliver@talktalk.net or enquiries@harveygs.kent.sch.uk

The proceeds of this year's concert made a major contribution to a magnificent sum raised by the OHA which enabled us to buy a brand new minibus for the School. Times are hard for school funds and the OHA always try to help the school with extracurricular activities. So if you went to Harvey or have sons, grandsons, nephews etc., who have benefited from a good education at Harvey, or just love big band music, then why not give yourselves a treat and come along to our next great concert. The earlier you buy your tickets, the better the seats you get as they are numbered!



CAPEL-LE-FERNE VILLAGE HALL MANAGEMENT COMMITTEE
Registered Charity Number 281.786. **PROVIDING SERVICES FOR OUR COMMUNITY**

All this information and more can be found on our website www.capel-le-ferne.org

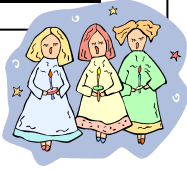
Please help us keep this up to date by contacting our Webmaster

Committee Meetings are held at the Village Hall on the First Tuesday of every month at 7.30pm.
A REPRESENTATIVE FROM ALL HALL CLUBS AND USERS, IS REQUESTED TO ATTEND



CAROL SERVICE - 9th December, 3 p.m., in the Village Hall

A Joint informal service from St. Radigunds Church and the Baptist Church to celebrate the festive season. Tea & Mince Pies will be available.



RECYCLING - INSIDE THE HALL

INSIDE THE HALL Boxes are provided for:- Unwanted shoes for charity, Used Stamps for Moorfields Eye Hospital & Hearing Dogs
Plastic Lids/Bottle Tops for a Wheelchair Charity and/or Kent Air Ambulance
Please place the above in the relevant boxes provided.

CONTINUOUS EVENTS

Quiz Sheets: Available (£1 per sheet) at the Farmers Market or from Cherry Leppard, 29 Albany Road, first prize £25. The answers are placed in the Grapevine and on the Website.

100+ Club: £12 per year your number is placed in a draw, every month for 1st Prize £25, 2nd £15, 3rd £5 These DOUBLE in December! The draw will take place at the Farmers Market on the 1st Tuesday of each month. Contact Wendy 259120 for further information
Farmers Market: Tuesdays 10 a.m. to 12.30 p.m. Approximately 20 stalls selling local produce every week.

FUND RAISING EVENTS

INDOOR BOOT FAIRS 8 a.m. to Noon
2nd December (please note change of date) 2012.
27th January, 24th February and 31st March 2013
Tel: Wendy 01303 259120 for more information.

CHICORY TIP 27th April 2013

100 CLUB WINNERS – NOVEMBER

1st 30 Jess Young
2nd 36 Richard Salmon
3rd 73 Sheila French



VILLAGE HALL MANAGEMENT COMMITTEE

Registered Charity Number 281.786

8 a.m. to 12 noon. SUNDAYS

2nd December 2012

27th January, 24th February, 31st March 2013

REFRESHMENTS – DISABLED ACCESS

Entrance by Donation to Village Hall Funds

Tel: 01303 259120

visit our web site for further info

www.capel-le-ferne.org

email: capelfarmersmarket@yahoo.co.uk

I am arranging a few days to Keukenhof Gardens in Holland from Tuesday 9th April to Friday 12th April. Hotel is Den Haag Noondorp and this is half board. The price for this with coach & crossing is £278.00. Pick-ups in Capel. We would have one day in Amsterdam. Gardens not included in the price. For more details - ring Cherry 01303 255114.

Can anyone help solve a difficult problem in my family history. During WWI my great uncle, Charles Wood, served in the early air force, designing and maintaining airships based at Folkestone. His wife and family were accommodated at Sea View Close, Capel le Ferne, which I take to have been service accommodation at that time. Late, or just after the war, my uncle eloped with a younger woman to Canada and I have only recently learnt of the existence of his real family. It must have caused a local scandal. I think all the action took place between the census of 1911 and 1921 so these will not yield any information. Do any records exist in the archives and if so where? I would be grateful for any assistance that could be given. If these records no longer exist, might someone have naval records or might know of a naval historical organisation who knows of the work on airships at that time.

Malcolm Jordan, Croft Barn, Lower Stanton St Quintin,
Nr Chippenham, SN14 6BY. Tele: 01666838550.

Email: malcolm@mjordan.demon.co.uk

Elaine-Le-Ferne
Hairdressers
Your friendly local hair salon
established in the village for 35 years
54 Victoria Rd
Capel-Le-Ferne
01303 253173
Elaine and Wendy
would like to wish you all a very
HAPPY CHRISTMAS
and a very
HAPPY HEALTHY AND PEACEFUL
2013

The Valiant Sailor

New Dover Road – Tel 01303 252401 www.valiantsailor.com



Food served 7 days a week. Open daily from 12h00.

New Year's Eve Party

Live music by **Liquid Jacket**.

Bookings now being taken. Limited number of tickets available in advance. *

Admittance by ticket only. £10pp including free buffet.

FESTIVE SEASON

Book now for Christmas Parties (Excluding Sundays) **Christmas Menu** available 1 Nov to 23 Dec. (see website for details)
Office, Private Parties, Walkers, Groups, Wedding Anniversaries, Wakes and Bar/Batmitzvahs catered for.

Our 34 cover separate restaurant serves a range of freshly prepared meals along with an excellent Roast every Sunday.

Real Ales, Fresh Fish and a good selection of wines available. We prefer to use locally sourced produce.

Forthcoming events

Tue 27 Nov Tune Session – 8.00pm. Wed 28 Nov Quiz Night – 8.00pm.

Sat 01 Dec Live Music with Jerry 'C' – 8.30pm. Thu 06 Dec Clairvoyant evening – 8pm.

Sat 08 Dec Karaoke with Zeeoke – 8pm onwards. Sat 15 Dec Disco Night – 8.30pm onwards.

Sun 16 Dec Live Music with Cultured Pearl – 2pm. Sat 22 Dec Live Music with Martin Matcham – 8.30pm.

Mon 24 Dec Live Music-The Fabulous Grandads – 8.30pm. Wed 26 Dec Live Music with East Edna – 8.00pm

Sat 29 Dec Live Music- The Hollywood Skunks – 8.30pm. Mon 31 Dec Live Music with Liquid Jacket – 8.30pm

Management and Staff look forward to meeting you.

Merry Christmas and Happy New Year to ALL

Burglaries/thefts - In Capel recently there has been a couple of burglaries/break ins in the area. Important message for residents, just doubly make sure you have locked doors and windows, do not leave things on display etc. Getting extra security for your home is a good idea if you don't have any. Burglar alarms (many burglars will avoid breaking into a property with an alarm), outdoor light (good outdoor lighting can put off or draw attention to a burglar) you can get FREE! Home safety advice and services by calling KENT FIRE & RESCUE- 0800 923 7000. If you need to ask any further questions please call the warden.

Christmas - Christmas is almost here again! Where has that year gone? This message reflects the above. Make sure you do not leave outside all your empty boxes of what you receive for Christmas. Burglars can then see exactly what you have or may have in your home. Also make sure your smoke alarms are working, if you do not have one you can usually get them free by phoning 'Kent fire and rescue' above or contacting 'Handy-van age UK' below

Handy van age UK service - This is a service for older residents to feel safer in your own homes. Handy van is a registered charity and is police-vetted. Handy van provides free home security; free safety measures and can do small repairs around the home for a small fee. Door chains, locks, smoke detectors, and carbon monoxide detectors are fitted free of charge. Please call the warden for more details.

Late night ASB - If you are experiencing anti-social behaviour quite late at night or in the early evening please remember you are within your rights to report to 101 which is the number for non-emergency police calls or to report a crime.

Shepway lifeline - This is a service that provides a continuous 24 hour link to the control centre staff via a personal pendant that you wear. Whatever your concern or worry i.e. maybe you have had a fall or need an ambulance the staff will take appropriate action. For more details contact the warden.

Foggy weather/winter driving - It is not unusual to get the foggy weather in Capel or low cloud as some say. Just recently it has been noticed by my-self and others that not many people put on their lights and fog lights. This is just a reminder for residents, the importance of putting on your lights for yourself and others on the road. Look in the Grapevine for winter driving information and the winter checklist for your vehicle.

MERRY CHRISTMAS EVERYONE & A HAPPY 2013



**Mobile
Library
Every
Tuesday**



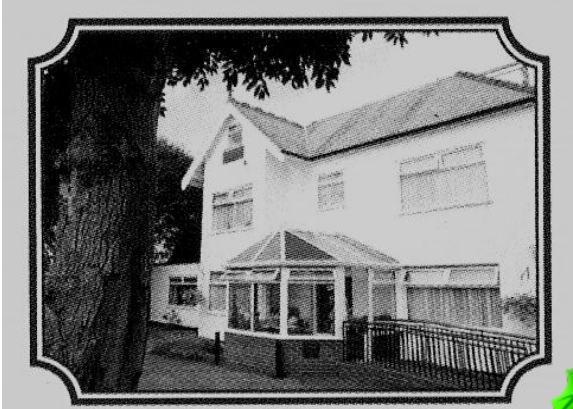
Old Dover Road 10.25am - 10.40am
Victoria Road 10.50am - 11.20am
Reece Adams House 11.25am - 11.55am
Village Hall 12.00noon - 12.30pm



I will be attending the Farmers Market on
11th December, between 10.30am and
12noon. If anyone would like to talk to
me, or if they want to ring me
My number is 077722 26209

PCSO Gretel Stevens

BRACKNELL HOUSE
Residential Care Home
34 Helena Road, Capel-le-Ferne



24 Hour Staffed Residential Care
Long Term or Respite Care
Family and Friendly Atmosphere
Tel: 01303 254496
Or 07904095747
Email: bracknellhouse@btconnect.com

CAPEL BAPTIST CHURCH
Capel Street. Services 10.30am.
Speakers for DECEMBER 2012

2nd Gloria Guest
 9th Rev Ruddle (with Communion)
 16th Richard Blackwell
 23rd Pam Barr
 25th Christmas Day – Colin Patience
 30th Pam Barr – Bring and Share a Hymn or Reading
ALL WELCOME TO THESE ACTIVITIES
If there are queries regarding these details,
please call 01303 251086. Gill Cooper
Please! A reminder that the public are requested not to park in front of the gates on Sunday mornings as this is a disabled access.

Insideout cleaning and Maintenance

Carpet and upholstery cleaning
Window Cleaning
Cleaning of debris and leaves from gutters
Mould removal from conservatory's, fascia and gutters. Oven Cleaning

3 CARPETS CLEANED FOR THE PRICE OF 2

Call for a free quotation **10% discount**
 01303 250392 or 07842624786 **for OAP's**

Keith Barrie
Plumbing and Heating

Home: 01304 211052 Mobile: 07596 588721

Free Quotations 24 hour call out

City and Guilds Qualified



Kris Alden A.D.I.

Driving Instructor



£85 for first 5 hours
Or £20 per hour

07772775564

Email: info@krisalden.co.uk

Capel-le-Ferne Gardeners' Association



Gardeners' Xmas party in December,
 Tickets in advance from Gess.

The AGM resulted in election of committee and
 the further year's activity.
 Gess Harman Secretary.



Any enquiries about membership or activities
call Mr Gess Harman on 01303-255661.

HOME TUTORING AND CLASSES

All ages, all levels welcome.
 Come on your own or join a group

LEARN A LANGUAGE : French, Spanish, Italian or German. Also English for foreign students.

MATHS (Numeracy), ENGLISH (literacy), age 6 – 18yrs.

HELP with the KENT TEST (11 Plus) : Verbal Reasoning, Non-verbal Reasoning and Maths.

I am a fully qualified teacher with many years of experience and a high success rate (97%).

For more information please phone: 01303 226924
 07429 415303



CAPEL-LE-FERNE BOWLING CLUB

November saw the Bowls Club off to a flying start in the League matches with 4 wins at home and 1 away. This puts us in third position in the first division, but its early days yet. Another trip has been arranged to the Folkestone Indoor Bowls Centre on the 9th December and all members are welcome. We have a team playing in the Oyster Cup next month at the Faversham Community Centre. This is an all-day event against clubs from all over Kent. Good luck to them.

Three new members joined in October bringing our membership up to 40. But we still have plenty of room for anyone who would like to come along and give the game a try.

Preparations are a little slow for next year's nude calendar due to the cold weather, but we hope to have copies available at the Farmers Market next year.

We end the year with our festive Booze and Bowls night. Two games of bowls followed by mince pies, champagne and songs around the Christmas tree lead by our very own Jenny Carter and the Bowls Club choir.

A VERY HAPPY CHRISTMAS TO OUR MEMBERS BOTH OLD AND NEW

Jenny Carter 250928 Barry Mansfield 257157
Ros Chandler 255862



CAPEL-LE-FERNE Youth Club

Every 1st and 3rd Thursday in the month from 7.30pm to 9.30pm.

Please come along and your first evening is free!

**Please ensure you collect your children from the
hall, not the Car Park, even on light evenings.**



December 6th Games & Mince Pies/Jam Tarts
December 20th Kidz Planet

We are still looking for additional helpers. Any help will be gratefully received. Please see one of the Youth Club helpers for more details.

Any issues/queries

Please contact the Chairperson,

Simon on 07860803767 and find us on Facebook to keep up to date with all info about Capel Youth Club.



Steel fabrications of all types

- Standard & Automated gates
- Security & bespoke Railing design
- Ballustrading
- Structural steels & staircases

contact

Bracegirdle Steel Services

Mobile: 07738 903154

brace.steelservices@hotmail.co.uk

www.bracegirdle-steel-services.co.uk

A S Maintenance

Local Handyman Services



Painting & Decorating
Plumbing

General Household Maintenance

Tel: 01303 884942

Mobile: 07505 134 732

Email: andy@as-maintenance.co.uk



**See Page 11
for all Village
contacts**



FITTING CREATIONS

BLINDS – CURTAINS – SHUTTERS



Friendly Family Business
Local to you

01303 894882

07506 144427

www.fittingcreations.com

info@fittingcreations.com

The Old Harveians' Association
Present

THE RAILWAY SWING BAND

In concert at
**The Harvey Grammar School
Folkestone**
on **Wednesday 6th March 2013**
at **7.30pm**

*All the popular music of the big
band era*
TICKETS £10

To reserve your tickets phone:
John Oliver Event co-ordinator for OHA
on 01303 251403 or e-mail john.oliver@talktalk.net or
phone Harvey Grammar School on 01303 252131 or
E mail to enquiries@harveygs.kent.sch.uk

The Folkestone Big Band Appreciation Society

The FBBAS meet on the third Wednesday of each month from 2-4pm in Wards Hotel, Earls Avenue, Folkestone, when a friendly group of lovers of Big Band Music get together to chat over a coffee or a drink from the bar and listen to a presentation of a Big Band by a member. It only costs £1 a session, with all profits going to The Kent Air Ambulance. The programme for the next three months is as follows:

Wednesday, 19th December 2012 – Presentation by Trevor Sadler (A Story and in the Christmas Mood).

Wednesday, 16th January 2013 – Presentation by John Oliver (The Royal Air Force Dance Band – The Squadronaires)

Wednesday, 20th February 2013 – Presentation by Roger Jeffrey (American Swings)

If you love Big Band Music, you would be very welcome to join us. Just turn up at the hotel or phone The Chairman, Tony Pettit of 1, Hythe Close, Folkestone, Kent. CT20 3QH.
Tel: 01303 252214 or mobile 07798 773590

DO YOU KNOW SOMEONE WHO NEEDS OR DESERVES A BRAND NEW GARDEN?

ITV1's hit series "Love Your Garden" starring Britain's favourite gardener, Alan Titchmarsh, is back. Last year Alan helped people across the country whose gardens had suffered as they coped with life's challenges, building them a brand new outdoor space. Now Alan is looking for more deserving people with gardens that desperately need transforming. They could be an unsung hero or a tireless fundraiser or a family that is coping with difficult circumstances. Whatever the story, if you think a garden created by Alan himself could help them or be a fitting way to say "thank you" then please let us have your contact details and a brief description of the person you are nominating using one of the following methods:

BY PHONE: 020 7065 7072 (pre-recorded message service)

BY POST: Love Your Garden PO BOX 64382 LONDON EC2P 2GJ

BY E MAIL: Teamhort@spungoldtv.com

give someone special a treat...

A new series for Channel 4 is looking to add glamour to someone's life with a true Hollywood make-over. *Hollywood Me!* follows someone who deserves a lift in their life... with the help of some top experts we'll transform someone with a personal make-over and a home interior make-over. Even the most hard working and well deserving person will experience the glamour of Hollywood and have a bit of sparkle in their lives!

If you want to nominate a special person to receive this remarkable treat then contact us at: hollywoodme@ricochet.co.uk or on 01273 224802 and we will consider every suggestion.

Remember to leave your contact number so we can talk to you in private about your nomination.

In the coming days, you should be aware. Do not open any message with an attachment called: **"Invitation FACEBOOK"**. Regardless of who sent it, it is a virus that opens an Olympic torch and burns the whole hard disc C of your computer. This virus will be received from someone you have in your address book. That's why you should send this message to all your contacts. It is better to receive this email 25 times than to receive the virus and open it. If you receive email called: "Invitation FACEBOOK", though sent by a friend, Do not open but delete it immediately. CNN said it is a new virus discovered recently And that has been classified by Microsoft as the most destructive virus ever. It is a Trojan Horse that asks you to install an adobe flash plug-in. Once you install it, it's all over. There is no repair yet for this kind of virus. This virus simply destroys the Zero Sector of the Hard Disc, Where the vital information of their function is saved.

Kent jobs for Kent's young people: Are you looking to expand your business? Worried about skills shortages and employee costs? If your business employs less than 250 people, Kent County Council could help you employ an apprentice and help pay for them in the process! Hiring an apprentice gives you the chance to build the skills you need for your business, and helps a young person get their foot on the career ladder. Find out how to access £2,000 of KCC funding (and maybe even more with national funding) to expand your business today. Contact the Kent Employment Programme team on 0800 10 18-2-24, email kep@kent.gov.uk or visit www.kent.gov.uk/kentjobs4kyp. Emma Carey, Community Engagement Officer – Dover, Room G37 Sessions House, Maidstone, Kent, ME14 1XQ. Tel: 01622 694943. Mobile: 07850 924247.

**See Page 11
for all Village contacts**



Judo I.B.F. Club ET.1978



Capel le Ferne Village Hall - Every Wednesday
 Juniors (6-9 years) 5.30pm-6.30pm
 Seniors (10 years +) 6.30pm-8.00pm
 Senior Coach: Colin Carrott 3rd Dan Tel: 01303 258942
 Technical Advisor: Colin Ogburn 3rd Dan
 Tel: 07870 822 510. New Members Very Welcome
 Up to 5 Qualified, Insured Instructors & Coaches to give
 expert tuition. Come & try this DYNAMIC MARTIAL ART



To all My Canine Friends in
 Old Dover Road,
 NO, I have not taken your
 drinking bowl in,
 some "low-life" has stolen it.
 I will however, replace it as
 soon as possible.
 Take care my friends.
Roy Butterworth.

Remember Them

(Proprietor: Mrs Anne Cox)

Independent Provider
 of Bespoke Orders of Service
 for the Funeral
 of your loved one.



Enquiries: 01304 823456 and/or
 e-mail: rememrbthm2011@gmail.com

FOR SALE LADIES BICYCLE

Raleigh Pioneer Spirit
 includes prop stand, rear light,
 pump and rear carrier.

£50 o.n.o

Tel: 01303 258961

24 Avondale Road, Capel-le-Ferne CT18 7LJ



The Lighthouse Inn 111 Old Dover Road CT18 7HT

info@thelighthouse-inn.co.uk www.thelighthouse-inn.co.uk 01303 254080



Channel Views, Alfresco Dining, Thai and English Cuisine, En Suite Rooms
 We are CLOSED on MONDAYS

**THE LIGHTHOUSE IS NOW OPEN FOR BREAKFAST SANDWICHES TEA CAPPUCCINO LATTE
 FROM 9AM WEDNESDAYS TO SUNDAYS
 BUSINESS BREAKFAST MEETINGS WELCOME**

Dec 1st -23rd THAI AND ENGLISH XMAS LUNCH AND DINNER MENU £21.00

XMAS BONANZA: 12-6pm

Sat Dec 1st Art Exhibition, Local Terlingham Vineyard Wine Tasting, Carols, Mulled Wine and Mince Pies.

Sunday Dec 2nd Belgian Beer Tasting and sale of Belgian Chocolates for those last minute Xmas presents !

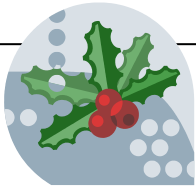
Xmas Day Changers Carols Crackers and Carvery **£40 SOLD OUT**

New Year's Eve Gala Buffet and Bubbly with Entertainment by Gary Richards **£45**

**Our resident pianist will be playing the Baby Grand Piano in the Drawing Room between 12-3pm every Sunday.
 The Lighthouse is available for Birthdays Wakes Conferences and Exclusive Hire for Weddings.**

**The Lighthouse will close on Sunday January 6th and re open on Friday Jan 18th 2013
 WE WISH ALL OUR CUSTOMERS A HAPPY XMAS AND A PROSPEROUS NEW YEAR**

www.facebook.com/thelighthouseinnfolkestone



FARMERS MARKET NEWS - FIND US ON FACEBOOK!

<https://www.facebook.com/groups/227748610640218/349181228496955/>

THE TASTE OF KENT AWARDS 2013

The voting has now commenced via the website www.producedinkent.co.uk

We would be most grateful if you could take the time to vote for us in the Best Farmers Market Category. We won in 2004, and it would be great to win again –the Forms are available at the market if you do not have internet access.

CHRISTMAS SPECIAL FARMERS MARKET 18th DECEMBER

***WE WISH ALL OUR CUSTOMERS A MERRY CHRISTMAS & A HAPPY NEW YEAR
THANK YOU FOR YOUR CONTINUED SUPPORT***

PLEASE NOTE WE WILL BE CLOSED ON 25th DECEMBER AND 1st JANUARY

RE-OPENING ON 8th JANUARY 2013

Many stalls are now taking orders for Christmas.

and some will even deliver them to the village hall on 23rd December for your collection.

With new stalls arriving, we are now full of stalls, which is great. Mauritian Exotic Foods have returned after a break due to family problems. Mogador, (European dishes) is doing well, as are Damari's (Italian dishes), and Smoked & Spice (smoked cheese, fish & meat). A Newsletter is sent out as and when any news comes along regarding - stalls, events etc. If you would like to receive one, please send your email address to capelfarmersmarket@yahoo.co.uk - please be assured your email address will not be forwarded onto anyone else, and it will also be hidden from all other recipients. This Newsletter is also added to our FACEBOOK page. We are still looking for help with setting up and clearing away, on a rota basis. If you feel you could help us in this way, please contact Jenny or Cherry. Posters are available, if anyone could possibly display one for us, they can also be downloaded from our website. Please note that all the products for sale are freshly produced, in Kent. Our present products are:- Fish, Meat, Eggs, Desserts, Vegetarian Dishes, Preserves, Jams, Honey & Pickles, Cheese, Delicatessen, Smoked Fish, Meat & Cheese, Various Foreign Dishes, Bread, Cakes & Pastries, Vegetables, Fruit, Chocolates, Truffles & Sweets, Fruit Liqueurs, Plants and a few Crafts. James Taylor Photography – portable studio for portraits, passport, driving- licence photos, printing your holiday snaps, bookings for weddings, parties etc. is in the small hall.

We should point out that we ensure our producers hold the relevant certificates i.e. a public liability insurance and, where necessary, health and hygiene certificate and kitchen registration documents.

CAPEL-LE-FERNE ACTIVE RETIREMENT ASSOCIATION - Visit our Website www.capelara.co.uk for all the latest news

We enjoyed an excellent November meeting in the Village Hall watching a demonstration of Stained Glass making where finished products were also for sale. As part of a Kent wide organization we went to Canterbury Cathedral for a Thanksgiving Service 2 days later. A small group of us ventured up to London to enjoy an official tour of the BBC Studios. Our next meeting together will be for Lunch on the 25th November and our regular Coffee Morning is next on Thursday 6th December where the Edinburgh Wool Mill will have non-clothe items for sale in time for Christmas. We also gather again for our December Christmas Party and Carols at the Village Hall on the 4th. **ACTIVE IN NAME AND ACTIVE IN NATURE!** If this sounds what you are looking for and are over 50, retired or semi-retired, and a resident in Capel then:

Please telephone **Sally on 01303 250144 or Roy 01303 253331.** E mail capelara@rocketmail.com



Working in partnership with
The Prince's Trust
to deliver



**Team
programme**

Are you unemployed and aged 16 – 25?

Call, text or e-mail Leader of Team

Brendan Hammond to arrange an appointment

07843 287817 brendanhammond@cxk.org

Starts:

Monday 7th January 2013

CAPEL-LE-FERNE WEBSITE

www.capel-le-ferne.org

Please could all Clubs & Societies in the Village, regardless of where and when they meet, send regular updates plus contact information to our Webmaster. Also all forthcoming events, in fact any information of interest in the village, i.e. local events, history, local celebrities, family searches etc. The website is proving very popular, receiving many enquiries. Current information is important and it cannot be updated without your help. It is a mine of information, especially for anyone new to the village. All event posters are placed on there to be downloaded by anyone wishing to display one. If you have ANY photographs of Capel, your club, events, history, the area etc. please forward them for inclusion in the Gallery of Images.

Contact Peter at 28 Helena Road, Tel: 01303 248149.

E mail: webmaster@capel-le-ferne.org

News from the Battle of Britain Memorial Trust Custodians of the National Memorial to the Few, Capel-le-Ferne, Kent

RIP Flt Lt William Walker AE, Spitfire pilot, poet, family man and friend to the Trust.

24 August 1913 - 21 October 2012



At 99, William is thought to have been the oldest surviving Battle of Britain veteran. His funeral will take place at St Clement Danes in London. Active until the very end, despite the aches and pains associated with his advanced years, William had been planning to attend the Trust's End of the Battle Gala Dinner in the presence of the Patron, HRH Prince Michael of Kent GCMG, on the Thursday before he died, but suffered a stroke and was taken to hospital. He died peacefully on the Sunday.

William's absence saddened the gathering at the dinner and was made even more poignant by the fact that in recent years it had become traditional for William to raise a toast to his fellow Battle of Britain pilots after reading his poem *Absent Friends*. That poem was one of a collection published in 2011 in aid of the Trust's Wing Appeal by a man whose sparkling wit and generous manner was enjoyed by all those who met him. The collection also includes *Our Wall*, inspired by the Christopher Foxley-Norris Wall at the National Memorial to the Few, Capel-le-Ferne, where the names of all those who flew in the Battle are listed.

Anniversary unveiling

At the 70th anniversary commemorations in July 2010, Prince Michael of Kent unveiled a copy of the poem carved in stone at the left hand edge of the wall. William, who read the poem to the many thousands of spectators present, described it as a very proud moment. Born on August 24, 1913, William joined the RAFVR on September 2, 1938 at Kidlington, Oxford, as an Airman u/t Pilot and flew his first solo there on the 28th. He was called to full-time service on September 1, 1939 and posted to No 1 ITW, Cambridge on November 15. He went to 2 FTS, Brize Norton on February 17, 1940 and at the end of the course he was commissioned and posted directly to 616 Squadron at Leconfield, arriving on June 18. During the late morning of Monday August 26, 1940, a large German bomber force, with heavy fighter escort, was heading towards targets in England including the RAF fighter stations at Kenley and Biggin Hill. The force was engaged over Kent and the coast by Defiants, Hurricanes and Spitfires. Spitfires from No 616 (South Yorkshire) Squadron were scrambled from Kenley to the Dover/Dungeness area and found themselves in a fight with Messerschmitt Bf 109s. William's aircraft was hit and badly damaged and he bailed out, landing in the Channel with a bullet in his right ankle. William clung to a shipwreck on the Goodwin Sands before being rescued by a fishing-boat, transferred to an RAF launch and brought ashore at Ramsgate, where he was greeted by a large crowd and presented with a packet of cigarettes by an elderly lady.

Brewery boss

In later life William enjoyed recounting the story of how, as the surgeon prized the armor-piercing bullet from his ankle during his stay at the RAF Hospital, Halton, it shot out and hit the ceiling. He kept the bullet as a souvenir. After recovering from his wound, William's postings included joining a squadron engaged in anti-aircraft co-operation duties and one with the Sector Gunnery Flight at Gatwick.

William had celebrated his 27th birthday two days before he was shot down and so was rather older than many of his comrades. He had begun his business career in 1931 as a pupil brewer at the Aylesbury Brewery, learning brewing, malting, bottling and cooperage. Two years later he joined Ind Coope's brewery in Burton and after the war rose to become its Chairman. He never lost his liking for a good pint and enjoyed many in the RAF Club in Piccadilly. Bright, witty and writing poetry to the last, William attended numerous events with and on behalf of the Few, including the 2012 Memorial Day at Capel-le-Ferne. He donated the proceeds from his book of poetry to the Trust's appeal to raise money for The Wing, its new visitor centre, and signed many copies. Details of how to purchase a copy are below. While "Absent Friends" and "Our Wall" are better known, his "Preface 2011", which introduces his book of poetry, sums up his philosophy:

When I retired and work was done, I started writing odes for fun. Finding words to scan and rhyme, Occupied much leisure time.

Senility is kept at bay, throughout a versifying day. Never let the mind be idle – To do so could be suicidal!



To support the Wing Appeal in memory of William, please reply to this email (or send an email to alcolm@go4marketing.net), including your name and address, how many copies you require (see options below) and your preferred method of payment. You will then be contacted to arrange payment and the books will be mailed to your home address.

I would like: () softback copies of his book at £8.50 (inc p&p). () signed softback copies of his book at £11.50 (inc p&p). () hardback copies of his book at £20 (inc p&p). () signed hardback copies of his book at £23 (inc p&p). I would like to pay by Visa/Mastercard/Maestro. Card No..... Start date Expiry date Issue No (Maestro)..... Security code Amount£..... I would like to pay by cheque made payable to The Battle of Britain Memorial Trust. [Please delete whichever option does not apply] Please also tell us if you would like more information about leaving a legacy to the Battle of Britain Memorial Trust. **The fund-raising continues**

Fund raising is now well underway for our £2.8m Wing building and we are confident that the visitor and education centre will be up and running in time for the 75th anniversary of the Battle of Britain in 2015. It will, though, need lots of support from you - our loyal band of followers. Clearly we need some large sums of money, but we are also delighted to receive even the smallest donation.

If you would like to organise a coffee morning or a sponsored event in aid of the appeal - or if you know of a trust fund, business or other supporter who might be able to help, please get in touch using the email address at the bottom of this newsletter. We would love to hear from you - and we will acknowledge your donation through this newsletter. Don't forget that if you live close enough, every time you visit the site and buy a coffee you help out in a small way. Access to the site is free at all times and will remain so when The Wing is built. The car park, café and gift shop will stay open at weekends throughout the winter again this year, thanks to our super band of volunteers. There's more on the website. Take a look at our website at

www.battleofbritainmemorial.org - or catch up with us on Facebook by searching for 'Remembering the Few'. And don't forget that an easy way to support the Trust is to buy a car sticker for just £1.50 each (plus 50p P&P). Email malcolm@go4marketing.net with any questions, fund-raising ideas or bulk buy enquiries. Don't forget to add your name and address when you send your car sticker cheque, made payable to the Battle of Britain Memorial Trust and sent to the Battle of Britain Memorial Trust, PO Box 337, West Malling, Kent ME6 9AA. Come and see us - The Memorial itself is open all year round for those on foot - and our wonderful volunteers keep the shop and café open throughout the summer and each weekend throughout the winter. The volunteers will also open on special occasions for groups (if you ask nicely). To ask nicely, check opening times or find out anything else before visiting just ring 01303 249292 or 01732 870809. The site is approached from either Dover or Folkestone on the B2011 at Capel-le-Ferne; postcode - CT18 7JJ. It's all on the website! ***More soon; let me know if there is anything you would like information on in a future edition and please feel free to pass this to friends or family who may be interested. Ask them to send me their email address if they want to be sent this newsletter in future. Please also let me know if you receive more than one copy as I am trying to de-dupe the mailing list. Join our 13,000 fans on Facebook - search for "Remembering the Few"***

Malcolm Triggs On behalf of the Battle of Britain Memorial Trust. <http://www.battleofbritainmemorial.org>

Malcolm Triggs, Go4 Marketing and Public Relations Ltd., Tel. 01233 636878. Mob. 07970 968314. Email: malcolm@go4marketing.net

Please visit www.go4marketing.net to see what else I can do for you. A member of Kent Invicta Chamber. Registered number 4327581.

Registered in Cardiff. Registered office 7, Lacton Oast, Willesborough, Ashford, Kent TN24 0JF



USEFUL CONTACTS INCLUDING ACTIVITIES & CLUBS	CONTACT NAMES	TELEPHONE NUMBER
Community Warden	Ms Chantal Blythe	07977 981994
Parish Council Clerk	Mrs Maureen Leppard	01303 259564
Webmaster	Mr Peter Jones	01303 248149
Chairman, V. H. Committee	Mrs Jayne Stone	01303 211480
Vice Chairman	Mr Jerry Watson	01303 258865
Secretary	Mrs Cherry Leppard	01303 255114
Treasurer	Mrs Jenny Carter	01303 250928
Lettings Secretary	Mrs Joan Woodsford	01303 252354
Minutes Secretary	Mr Gerry McCann	01303 850332
Maintenance	Mr Derek Jeffrey	01303 259842
Trustee	Mrs Jenny Barraclough	01303 245399
Trustee	Mrs Julie Young	01303 259734
Trustee	Mr Mike Stone	01303 211480
Trustees	Mrs Sue McCann	01303 850332
Trustee	Mrs Pim Scales	01303 254464
100+ Club	Mrs Wendy Leeming	01303 259120
Farmers Market	Jenny & Cherry	245399/ 255114
Boot Fairs	Mrs Wendy Leeming	01303 259120
Village Hall Quiz Sheets	Jenny & Cherry	245399 / 255114
Table & Chair Hire	Mrs Jayne Stone	01303 211480
Noticeboard (£1 per month)	Committee Members	
Divas Dance	Miss Rebecca Uden	01303 893650
Brownies	Mrs Sandra Sharpe	01303 241767
Guides	Miss Rachel Chandler	01303 210702
Youth Club	Mr Simon Withey	07860803767
Playgroup	Mrs Alison Cloake	07977 838609
Judo	Mr Colin Carrot	09850 548769
Capel Active Retirement Association	Mrs Sally Solly	01303 250144
Short Mat Bowls	Mrs Ros Chandler	01303 255862
W.I.	Mrs Vad Blake	01303 241399
Fit Friends - Pilates	Mrs Pam Vivien	01303 244322
Keep Fit	Mrs Karolin Taylor	01303 246887
Zumba Fitness	Tuesday & Thursday 6pm.	07411966582
Capel Ramblers	Mr Bob Mothersele	01303 250931
Gardeners Association	Mr Gerald Harman	01303 255661
Bridge (Sunday & Tuesday)	Adrian & Judy	01303 245521
Bridge (Fridays)	Mr Bob Jones	01233 756362
Art Group, St. Radigunds Church Hall	Mr Ahmed Ovais	01303 242670
Art Group, St. Radigunds Church	Mrs Susan Dootson	01303 243508
Remote Control Car Club	Mr Derek Jeffrey	01303 259842
St. Radigunds Players & Choir	Mr Colin Blake	01303 241399
Twinning Association	Mrs Joy Wallington	01303 851257
St. Radigunds Church		
St. Radigunds Church Hall Bookings	Steve Lennard	01303 670445
Capel Baptist Church	Mrs Gill Cooper	01303 251086
Welcome to Village Letter	Mrs Debbie Catling	01303 251525
Dog Walkers	Mrs Pam Sheppard	01303 243832 (eve)

Please let me know if I've left anyone/anything out!
Or if any details are Jenny 01303 245399



Capel-le-Ferne Playgroup

The Village Hall, Lancaster Avenue,
Capel-le-Ferne, CT18 7LX
capelpreschool@btinternet.com
Running for over 40 years

Ring Alison on 07977838609 or drop in during one of our sessions.

A few vacancies available

***** Ofsted 2010 - Outstanding environment and good in all other areas. *****

Open Term Time - mornings Monday, Wednesday, Thursday and Friday.

Capel Chimney Sweep Services

No dust, mess or fuss!

Fully Insured service for
all your chimney needs.

Complete service, sweep and vac.

Telephone Dave

on:

07896 282093 or

01303 231313

Institute of Chimney Sweeps Certificate
(ICS) qualified. Chimney safety
certificates issued for compliance with
your home insurance.



Simpson Aerials

Your local aerial installer

We install, repair and tune all TV and
Radio Aerials and Satellite, including
Freeview, Freeview Plus, Freesat and
Freesat plus. Est: 1988



Call Peter on



01303 250360 or 07971807150

Computer Problems?

- ✓ Advice
- ✓ Upgrades
- ✓ Repairs
- ✓ Internet
- ✓ Viruses
- ✓ Home tuition
- ✓ Networks
- ✓ Firewalls



NO CALLOUT CHARGE

DJ Computer Services
Telephone 01304-331083

Mobile 077898-23602

e-mail denis@djonesweb.co.uk

CAROL SERVICE

9th December,

3 p.m, in

The Village Hall





All Computer Problems Solved

Tel: 01303 241325 Mob: 0796 8129 902

Usual Fee £35

*PC's/laptops available - New & Recons.

*PC's setup with Internet, Email, Security & Office Programs

*Upgrades and repairs

*Web sites built & hosted from £7 per month.

*Tuition available by a qualified tutor

Ring Tony for a fast and friendly service

See www.kimcomputers.co.uk for details

www.villageyak.co.uk

CAPEL VEHICLE SERVICES

All makes of cars serviced and repaired.

MOT repairs, mechanical and welding.

Tyres, Exhausts, Batteries & Towbars

Supplied and fitted

Competitive rates. No VAT.

Friendly efficient service

Call John Horne 01303 255894 or email:

Johnhorne@amserve.net

Local free collection and delivery available if required
MOTs

Roger Crowther

rwcrowther@btinternet.com

Experienced and fully qualified Handyman

For free estimate tel.

01304 822649

07543 852682

All jobs, large or small.

5% discount for OAPs.

References available.



Carpentry, painting & decorating, tiling, misc. electrical and plumbing works, garden structures, odd jobs and repairs.

Absolute Security LOCKSMITHS

Opening hours: Mon-Sat 9am – 6pm

No call out charge – 24 hours, 7 days

All types of locks, open-supplied-fitted

Boarding Service - Emergency Repairs.

Key Cutting. Domestic & Commercial. Shutters, Grilles, Bars, Safes. Video/Audio Entry Systems.

Fitting Service Available.

01303 210057 / 07887652507

G B Haworth



Painter & Decorator

Interior & Exterior

Free Estimates Capel - 244206

GRAPEVINE ADVERTISING from 1st April 2012

This space could be advertising your commercial/business venture or, non-village organisation event.

Size 9cm x 3.5cm £ 9.50 Size 9cm x 7cm £14.50

Size 9cm x 13cm £20.00. Size 20cm x 13cm £36.00 (½ page)

Payment in advance. Cheques payable to

Capel-le-Ferne Parish Council

For further details contact Parish Clerk at 39 Victoria Road,
or Tel: 01303 259564. Email: maureen.leppard@btinternet.com

award winning driveways

Local Council
Approved
Contractors

2008/2010 MARSHALLS SOUTHEAST AWARD WINNERS & 2008 NATIONAL AWARD WINNERS

New 2012 block paving ranges from Marshalls now available

- All types of paving (driveways, patios, pathways) • Full driveway & dropped kerb packages
- Bricklaying & retaining walls • Resin-bonded gravel • Tarmac & concrete • Dropped kerbs

CAPEL

groundworks



Contact us for a free quote
T: 01303 253437 M: 07788 146673
capelgroundworks@btinternet.com
www.capelgroundworks.co.uk

CAPEL BRICKWORK SERVICES



- GARDEN WALLS • RETAINING WALLS
- GARAGES • GROUNDWORKS / EXTENSIONS
- RE-POINTING • ALSO DRIVES & PATIOS ETC

Family Run Business for Over 25 Years
Customer references Available

TEL: 01303 770496 MOB: 07825 291692

Do you

1. Need an extra telephone point in your house?
2. Need to relocate your existing telephone points to a more convenient place?
3. Need network cabling or system installation for your business?



For excellent rates call JOHN @ j.waller.services.

Fully qualified ex BT engineer with 12 years experience.

07766 068100 01304 225420

www.j-wallerservices.co.uk

Half the price of BT OPENREACH GUARANTEED

Recycling/Waste Collection Dates:

Food Waste, Rubbish & Green Waste

Friday, 14th Dec & Saturday, 29th Dec.

Fridays 11th (no Green Waste) & 25th January 2013

Food Waste & Recycling

Fridays, 7th & 21st Dec. Fridays, 4th & 18th Jan & 1st Feb: 2013.

No Issue in
January

Items for February issue to be with Maureen Leppard (Parish Clerk) at
39 Victoria Road, Capel-le-Ferne CT18 7LT, (Tel: 01303 259564) or
Email: maureen.leppard@btinternet.com by 6pm, Sunday, 13th January 2013

No Issue in
January

Winter driving



Half of all bad weather crashes happen in the winter months. During winter months, we expect the weather to be bad, and we can change the way we drive to compensate. But so many crashes are still blamed on the weather. The fact is that we don't change the way we drive as much as we should. The main cause of crashes in winter is poor driving, not poor weather. **Snow and ice:** A third of all crashes happen on roads that are wet or frozen. Frost, ice or snow on the road will reduce the grip of tyres. This means you are much more likely to skid, and it can take up to 10 times further to stop than on a dry road. If the road is wet, stopping distance doubles immediately. The faster you go, the longer it takes to stop. So, the way to prevent skidding and reduce stopping distances is to slow down. Drive with the conditions in mind and brake gently in plenty of time.

How can I avoid skidding? Skids are caused by harsh handling of the vehicle; harsh braking, acceleration or steering. But their root cause is nearly always speed. The best way to avoid getting into a skid is by slowing down. If you do skid, the basic advice is to take your feet off all of the pedals, until the wheels grip once more. If you slam the brakes on, you will lock up the wheels and lose control of the vehicle. Gentle braking will lessen the possibility of the wheels locking. If they do start to lock, then the technique called 'cadence' braking should be used. This works when the brake pedal is pumped on and off, this helps to keep wheel lock to a minimum. This is the principle that antilock braking systems (ABS), fitted to some cars, works on. So if you have ABS, you will not need to pump your brake pedal.

How can I tell whether roads are icy or not? One clear indicator is of course whether you had to scrape ice or snow from your windscreen at the start of your journey. Inside a car, it is very easy to forget the outside conditions and temperature, which can easily lead to overestimating the ability of your car and its driver to handle the driving conditions. Ultimately, this can lead to cornering too fast, leaving it too late to brake and just generally a poor level of driving in poor conditions. Highways keep local radio stations and TV networks up-to-date about road conditions and tell them when we are planning to salt the main roads. Conditions will vary across the county. Some areas are more likely to freeze than others. If there is a white frost on grass and cars, then you may find icy patches on the roads.

Winter sun: The low sun in winter is a big problem for drivers. Unlike in summer, when the sun is higher, the winter sun can shine directly into a driver's eyes. The problem is even worse when the road surface is wet or frozen. The sun shines directly into your eyes, and reflects up from the road surface. As you cannot control the sunshine directly, the only way to truly reduce the risk is to reduce your speed.

Drive to the conditions - reduce your speed: At 30mph, in perfect weather, it will take you at least 23 metres (75 feet) to stop in an emergency. When wet, this may become 46 metres, and on ice, nearly 230 metres. In residential areas, no matter what the weather, your speed is crucial. When there are plenty of road hazards like pedestrians, children, bicycles, parked cars and junctions, do you really need to be driving exactly on the speed limit? Don't forget, speed limits tell you the maximum speed at which you can ever travel on that road. They are not targets to reach.

Checklist to Get Your Car Ready for the Winter Season

- Just by making a few regular checks, you can decrease the chances of breaking down and ensure your car is in tiptop condition for the winter season.
- If heavy snow is forecast, make sure you carry a spade, wellies and a torch with spare batteries in case you get stuck. If you have to make a long journey, especially at night, take a flask of hot drink, rugs and blankets and high-energy food such as chocolate.
- A car that is well maintained is the most economical on fuel. Get it serviced at the manufacturer's recommended intervals. Before a long journey and if you use the car for short journeys every day, carry out the following checks at least once a month.
- Remove the engine dipstick and check the oil level; wipe the stick with a clean rag, replace it and check again. The level should fall between the minimum and maximum marks and if necessary, remove the oil-filler cap and top up with the recommended oil noted in the manufacturer's handbook.
- Check the engine coolant level in the radiator or expansion tank attached and top up if necessary, but only when the engine is cold. Top up the windscreen washer reservoir with antifreeze mixture in the correct proportions, which will be noted in the manufacturer's handbook.
- Use a pressure gauge to check that the air pressure in all tyres, including the spare, is as recommended in the handbook but only do this when the tyres are cold in order to get an accurate reading.
- Use a tyre-tread tool to measure the depth of the tread on all tyres, as the law requires that the depth all around the tyre and across its central section should not be less than 1.6mm. Most modern tyres have wear bars, which stand proud of the bottom of the tread grooves. If they are flush, the tyre must be changed. Remove stones and other debris from the tread with a penknife.
- Check that all lights and indicators are working and clean. Replace any spent bulbs and ensure that the battery terminals are clean and secure.
- Keep the windscreen, mirrors and windows clean and keep the windscreen and rear screen washer reservoirs topped up. In cold, misty or foggy weather check that the windscreen demister works.
- Additional checks include: replacing worn rubbers on windscreen wipers, ensuring number plates are clean and firmly attached, adjust seat belts correctly and check the alternator belt for wear and ensure that the tension is correct.

Two Christmas Craft Fairs taking place in Folkestone and Canterbury that you might be interested in.

Canterbury Adult Education Christmas Craft Fair takes place on Thursday 29th November from 3.30pm to 6.30pm at The Canterbury Adult Education Centre, Knight Avenue, Canterbury, Kent CT2 8QA. At our Christmas Craft Fair you will find a wide variety of beautiful handmade items and gifts. You'll be amazed to discover the range of items being created by our students and local crafters. Explore the variety of courses taking place from January 2013. Why not purchase a course as a gift!

The Cubes Christmas Craft Fair takes place over 3 floors on Saturday 1st December 2012 from 10am to 3pm at The Cube, Tontine Street, Folkestone, Kent CT20 1SD. At our Christmas Craft Fair you will find a wide variety of beautiful handmade items and gifts. Enjoy seasonal treats in The Cube Café while being entertained by a Christmas Choir. Register for one of the workshops taking place at this event to get a taste of courses starting from January 2013 or FREE workshop in Digital Photography or demonstration in Japanese Stitching by calling 01303 715 260. Why not purchase a course as a gift!

Kind regards, The Cube, Tontine Street, Folkestone, Kent CT20 1SD

Abigail Levitt, Local Engagement Co-ordinator Shepway and Canterbury Districts, Community Learning and Skills, (Kent Adult Education), Direct Line: 01303 715 260 or 01227 592 710. VPN: 7022 5264 or 7696 2712.

Visit www.kent.kentadulteducation.co.uk

today and find out more!

Find out more about the Creative Quarter in Folkestone www.creativequarterfolkestone.com



Late Night Christmas Shopping - Coast and Edinburgh Woollen Mills **Both Shopping Events on Thursday evening December 6th**

E.W.M. 6 ~ 7.30pm ~ including Instore Fashion show. *Refreshments and discounts*

30- 32 Burgate...quite near the Cathedral. **Coast 6.30 ~ 8.30pm** - 7, Marlowe Arcade ~ quite near BHS. Free raffle, bubbly and chocs, discounts and bounce back voucher 2013. 20% off everything in store



BURMA STAR ASSOCIATION FOLKESTONE & DISTRICT BRANCH

To all of the residents of the village of Capel le ferne.

I myself as the resident standard bearer (a friend of) would like to thank you all for all your support over the past 7 years, whilst being the standard bearer.

Unfortunately, the Branch had considered hanging up the standard in January, earlier this year. Due to the loss of some active member's. We as a branch thought it right and proper that it should be at the end of the year, to take into consideration the battle of Britain memorial celebrations, at Capel le ferne. Who we have supported since the opening, and will continue to do so.

The Standard now will be laid up at Holy Trinity Church on Sunday 25/11/2012 @1.30 pm for 2.00pm, which you are all welcome to attend.

May I take this opportunity to say thank you, and as of 26 Th Nov, I shall be carrying for the Royal Naval Association of Folkestone, and look forward for you continuing support.

Many, many thanks'

Stephen Shaw



AN UNUSUAL CONCERT

Dover Choral Society's next concert is something out of the ordinary! Most concert goers expect an orchestra to accompany the singers, but this concert features a programme

of unaccompanied music, and works written for accompaniment by just two instruments!

The other unusual thing is that all the music is by English composers, and was written in the 20th Century. The first half is comprised of Benjamin Britten's "Rejoice in the Lamb" and Ralph Vaughan Williams "Five Mystical Songs". Michael Tippett's "Five Negro Spirituals" from his work "A Child of our Time" start the second half, which then concludes with Benjamin Britten's "A Ceremony of Carols". Next year is the centenary of Britten's birth.

We have 5 soloists performing, including Lucinda Drelaud (Soprano), Rachel Eberlein (Contralto), William Jones (Counter-tenor and Bass), and Clifford Lester (Tenor).

Matthew Raisbeck will be playing the Society's recently acquired organ. Matthew is well known to DCS: he is our rehearsal accompanist, so we already know what a superb player he is. Matthew was previously organ scholar at St. George's Chapel, Windsor Castle and Worcester College, Oxford. Other accompaniment will be provided by Sussex-based harpist Alex Rider. Alex is principal harp with the Sussex Symphony Orchestra and is very much in demand as a freelance soloist. This promises to be an unusual and interesting concert, different from the usual offering from Dover Choral Society, and we hope that the town will come out and support it. Be prepared for your spine to be tingled!

Tickets, which are available from Dover Tourist Information Centre in the market Square (Dover Museum), are priced at £12 (£6 for students), or can be obtained from members of the society. Tickets can be pre-booked by calling 01304 820149.

A limited number of tickets will be available on the door.

**The concert is on Saturday 17 November in
Dover Town Hall and starts at 7:30 pm.**

Visit our website at www.doverchoralsociety.org.uk.

For further information contact: Donald Beck, Dover Choral Society Press Officer.

Tel: 07808 272047. donald.beck@ntlworld.com