



GRAPEVINE

Capel-le-Ferne Village Newsletter
APRIL 2014 - ISSUE NO: 225



Cancer Research Jumble Sale

We are holding our 71st Jumble Sale on
Saturday, 12th April at 2 pm.

All money raised going to The Royal Marsden Hospital.
This is just a reminder that there's still time for you to sort out a few more items you might no longer need, that you think might be of use to someone else. Oh and to remind you to come along too!

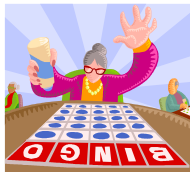
If you do have any good quality jumble please bring it along to the hall on the morning of the 12th.

It will all help to raise much needed funds. Or if it's too large an amount and you'd like it collected ring:

01303 254740 or 07949546011

Many thanks to you all! The Organisers

Back by popular request: Bingo PLUS scategories during the interval starring caller Gordon and his glamorous assistant Gill.
Cash prizes!!!!



St Radigund's Church Hall

Friday, 11th April

Doors open 6.45 pm. Eyes down 7.00pm

Run by the W I.

For more information ring Jayne on 01303 211480



CAPEL-LE-FERNE PRIMARY SCHOOL
Parents' & Friends' Association
FUN QUIZ - Saturday, 26th April
(School Hall) Capel Street,

Once again, we are holding our Annual Fun Quiz. It will be an American Supper style, so please bring along your own food and drink.



Doors will open at 7.00pm for a 7.30pm start.

Teams of up to 8. Tickets £3.00 per adult.

We will be holding a raffle and a bonus ball game for a cash prize.

Please come along and support us. If you would like to

book a table please phone the school office on

01303 251353. Email: office@capel-le-ferne.kent.sch.uk



St Radigund's Players

A BIG THANK YOU to all those who took part in this year's pantomime "Snow White" excellent show and enjoyed by all. Thank you to everyone who came and watched the performance. Also, thank you to Amin Stores, the Farmers' Market and Capel Primary School for helping to sell the tickets. Sales totalled in excess of £1,100.00. Contributions also collected for Sport Relief.

Further details will be published when accounts and expenses have been finalised and verified by the committee.

Thanks also to all the helpers, the volunteer parents, Angela Parkes and her team for arranging refreshments and the organisations who gave up their regular evenings for rehearsals; all of this helped and ensure our Community Pantomime ran smoothly. Thank you.

SAMARITANS

FOLKESTONE, DOVER & HYTHE

Capel-le-Ferne Indoor Boot Fair

Charity Reg: number 245968

The March indoor boot fair will take place on Sunday, 30th from 8.00am to 12.30pm, run by Friends of Folkestone, Dover & Hythe Samaritans in conjunction with the Village Hall. Tables are £6 or £8. Ring 01303 237803 to book a table.

SAMARITANS

FOLKESTONE, DOVER & HYTHE

Murder Mystery Evening

Charity Reg: number 245968

Saturday 5th April @ 7.30pm

The Village Hall. £4.00 per head.
Contact 01303 237803 or 01303 278431 for further details



If you know the details of your event in advance, please let Parish Clerk know so organisations avoid booking same date

"WHAT'S ON" IN CAPEL-LE-FERNE

30 th Mar	Indoor Boot Fair – organised by Samaritans
1 st Apr	CapelARA meeting: Kent & Sussex Air Ambulance
5 th Apr	Murder Mystery Evening – organised by Samaritans
8 th Apr	WI meeting: Georgia Reid -Taken with a pinch of salt
11 th Apr	WI: 6.45 for 7.00pm @ Church Hall - Bingo night
12 th Apr	Cancer Research Jumble Sale (page 4)
26 th Apr	Capel School PFA Fun Quiz - 7pm for 7.30pm start
6 th May	CapelARA Annual General Meeting
13 th May	WI meeting: Rosemary Piddock - Journey of Celia Fiennes
20 th May	CapelARA Day Trip to Savill Gardens, Windsor Park
6 th Jun	WI: 6.45 for 7.00pm @ Church Hall - Bingo night
7 th Jun	Battle of Britain Memorial Site Make n Paint Fun Day
26 th Jun	Youth Club Annual General Meeting 7pm (page 4)
28 th Jun	VILLAGE COMMUNITY DAY (page 6) FURTHER DETAILS TO FOLLOW
6 th Jul	Battle of Britain Memorial Day
8 th Jul	WI meeting: John Pearce Murder comes Gift Wrapped
12 th Aug	WI meeting: Mr Tony Harris Flying for Fun
7 th Sept	Garage Sale Safari
9 th Sept	WI meeting: Mr Joe Mendell Bob - Newhart rides again
12 th Sept	WI: 6.45 for 7.00pm @ Church Hall - Bingo night
20 th Sept	WI: 7 for 7.30pm Village Hall - Wit and Wisdom
26 th Sept	McMillan Coffee Morning (page 6)
11 th Oct	Cancer Research Jumble Sale
14 th Oct	WI meeting: Mrs Mary Beeney - Sainsburys
11 th Nov	WI meeting: Annual Mtg & Helen Stephenson Quiz
9 th Dec	WI meeting: It's Christmas starring ourselves

The village hall is now booked for New Year's Eve with "Chicory Tip" the 60's group. The price for this is £12.50 each and over 18's only. Bring your own food and drink and we will guarantee a great evening. Raffle and door prize! I will take names as soon as possible, I think this will be a sell-out, and tickets and payment due end of October. More details ring Cherry 01303 255114.



Benefice Services for APRIL 2014

Date	Alkham	Capel	Hougham
Sunday 6th	Evensong 6.30pm	Sung Eucharist 9.30am	Worship Together 11am
Sunday 13th	Eucharist 9.30am	Worship Together 11am	
Thursday 17 th	Eucharist & Washing of Feet 7.30pm		
Friday 18 th	Vigil of the Cross 2 - 3pm	Vigil of the Cross 12 - 1pm	Vigil of the Cross 1 - 2pm
Sunday 20th	Easter Day Eucharist 9.30am	Easter Day Eucharist 11am	Easter Day Eucharist 9.30am
Sunday 27 th			Benefice Eucharist 10am

From the Vicarage

I met him just once but have never forgotten Brother Raymond, his gentle sense of humour and the stories he told. With his cropped hair, Franciscan monk's robes and sandals you couldn't miss him in a crowd – not even in London. Travelling on the Underground one day he attracted the attention of a slightly tipsy Australian tourist who was visibly amused by the friar's appearance. The train pulled into a station. "I don't believe in your God!" the tourist sneered as he stepped onto the platform.

"He believes in you!" Brother Raymond yelled back as the doors began to close. As the train moved off, a man sitting opposite spoke. "Thank you," he said quietly. "I needed to hear that."

Jesus once compared God to a father whose wayward son left home and who never gave up hoping for his return – never stopped believing in him. Easter is the time when Christians celebrate Jesus, crucified by people who didn't believe in him, being raised to life by his Heavenly Father, who did. And I remember Brother Raymond, and those words that gave hope to the man on the train - and I hope that they give hope to you, too. Happy Easter! *Brian*



Capel Church Hall Fund-Programme for 2014

(All evenings are on the 2nd Friday of the month with a £5 entrance fee unless otherwise stated)

April 11th – Dr John Ray on World War I (shared with Step Short)

100th Anniversary of the start of WW1.

Dr John Ray Ph.D, F.R.Hist.S, is an eminent Historian and was a school teacher for 40 years in Kent Schools, the last twenty four being as Deputy Headmaster of a large secondary school in Tonbridge. He is a Fellow of the Royal Historical Society and his Doctorate in History was awarded by The University of Kent. He has written several books on the First World War. Anyone who came to his talk last year on The Battle of Britain will want to hear him again and anyone reading this article will be most welcome to come along to St Radigunds Church Albany Road to hear him on Friday 11th of April at 7.30pm (doors open at 7pm), when he will talk on the start of WW1. Admission is only £5 and you get a cup of tea or coffee and a biscuit in the interval. Folkestone is of course the town most associated with the 100th Anniversary Commemorations being the port of embarkation for those 1000's of troops who marched from The Central Station to The Leas and down what is now called The Road of Remembrance as so many of those very young men never returned. This evening is being hosted by Capel Church Hall Fund but the profit will be divided between The Fund and Step Short who are organizing the many events commemorating this historic event

For those who don't know. 'Step Short' was the order given to the troops at the top of the Road of Remembrance until they got to the bottom as it is very difficult to march with full strides down a steep hill so they had to shorten their strides so they didn't slip.

This talk will be the first of our series of talks/ concerts/ dances etc which are all on the 2nd Friday of the month except for September when the Snowdown Male Voice Choir will perform a concert on Saturday (watch this article for future details).

PLEASE give this very special evening your support if you possibly can. You won't regret it.

May 9th – Dr Jindi Dhillon – Olympics 1956 & 2012 & Health Benefits of Exercise

June 13th – Anne Finney presents Nat King Cole. July 11th – Keith Radford presents Flanders & Swan

August – no meeting. September 13th (Saturday) - The Snowdown Male Voice Choir – Admission £10

October 10th – Days Gone By – Songs of the 60's Sing-a-long & Dance Admission £7

November 14th – Frank Conley presents Gilbert & Sullivan - The Great and the Good

December 12th (Friday) - The Folkestone Agape Gospel Choir – Carol Concert – retiring collection only

Please note that the concert by The Snowdon Male Voice choir was a sell out in 2012, in fact we had to add another 21 seats so to be sure of your tickets for September 2014 you can reserve them by phoning or e mailing me.

John Oliver Chairman - Capel Church Hall Fund - phone 01303 251403

THE HALL IS AVAILABLE FOR LETTING FOR WEEKLY EVENTS OR CASUAL BOOKINGS FOR PARTIES ETC.

CONTACT STEVE LEONARD, LETTING SECRETARY ON

01303 670445 or Mobile 07525 254114



CAPEL-LE-FERNE VILLAGE HALL MANAGEMENT COMMITTEE

Registered Charity Number 281.786 PROVIDING SERVICES TO OUR COMMUNITY

All this information and more can be found on our website www.capel-le-ferne.org

Please help us keep this up to date by contacting our Webmaster

**Committee Meetings are held at the Village Hall on the First Tuesday of every month at 7.30pm.
A REPRESENTATIVE FROM ALL HALL CLUBS & USERS, IS REQUESTED TO ATTEND MONTHLY MEETINGS**

To view the hall, or to make a booking contact the letting secretary Joan Woodsford on 01303 252354.

The hall is adjacent to the Jubilee Playing Field , Playground, mini-skate park and multi-use games area.

Something to celebrate, want to hold a party? Need to organise a meeting or training session? Want to start a teatime chat group?

The Village Hall is available for hire for all these AND more. There are two sizes of hall – for differing types of event. Recently refurbished and well maintained on offer are a well fitted Kitchen, disabled facilities, projection screen, central heating, instant boiling water, stage. Hire either or both halls, depending on how much space you need. Licenced for most things (except hypnosis and boxing) including sale of alcohol, PRS, raffles.

THE GOOD NEWS

After a few years absence the village hall is organising a New Year's Eve event FOR 2014. Chicory Tip, best remembered for their catchy pop song 'Son Of My Father', which topped the UK Charts for three weeks in 1972 have been booked to perform. Watch for more information. Proceeds will be divided between Kent air Ambulance and Moorfields Eye Hospital.

THE EVEN BETTER NEWS

Several people in the village stepped forward with an offer to coordinate the boot fairs next season. Thank you all, in the event Wendy's Lemming's mantle will be worn by Sylvia Coles. Sylvia has joined the committee and will take over the boot fairs in time for October. She has also identified a merry band of 'volunteers' to help.

The Village Hall management committee would like to extend their thanks to the kitchen volunteers who work so hard in the kitchen during the boot fairs, garage safari, craft fair and the garage safari day. They are another example of the unsung heroes in the village.

RECYCLING

INSIDE THE HALL Boxes are provided for:-

- Unwanted shoes for charity,
- Used Stamps for Moorfields Eye Hospital & Hearing Dogs
- Shoes

Please place the above in the relevant boxes.

PLEASE NOTE – WE ARE NO LONGER ABLE TO RECYCLE BOTTLE TOPS. THEY SHOULD NOW BE DISPOSED OF VIA THE LOCAL AUTHORITY REFUSE COLLECTION SERVICES

We have noticed that much of the information on the website <http://www.capel-le-ferne.org> is out of date. This website was set up (amongst other things) to offer various organisations a forum to 'advertise' themselves and their fundraising events. The website is funded by the village hall and no charge is made to Capel organisations.

Sally Cook has taken on the role of editor and Peter is remaining as webmaster- his expertise is essential. A bigger job than anticipated Phase one (the village hall information) is nearly complete- Phase 2 will be those clubs and organisations which regularly use the hall. A pro forma is being designed and will be sent out in the near future. In the meantime feel free to contact her on Eures1994@yahoo.com.

The 'Hot Topic' at the last committee meeting was communication and relations with hirers. When there is a specific issue clubs and organisations will contact us in advance and come to a meeting to discuss the problem. The question we asked was 'is that enough or could we do better'.

We feel sure the answer is 'we could do better,' but how? We are therefore writing to clubs organisations to ask if they wish to nominate someone to attend our meetings regularly. If you have a suggestion on how to do better please let us know.

P.S. If you think we already do well let us know – we could do with some encouragement.

100 CLUB WINNERS – MARCH

1st 38 Don Firkin 2nd 10 Carol Evans
3rd 111 Freda Pierce

CONTINUOUS EVENTS

Books & jigsaws A wide variety of books and some jigsaws are available on an 'honesty basis'. These are on trolleys in the corridor. Thanks to all who have donated to this cause.

Quiz Sheets:- Available (£1 per sheet) at the Farmers Market or from Cherry Leppard, 29 Albany Road, first prize £25. The answers are placed in the Grapevine and on the Website.

100+ Club:- £12 per year your number is placed in a draw, every month for 1st Prize £25, 2nd £15, 3rd £5 These DOUBLE in December! The draw will take place at the Committee Meeting on the 1st Tuesday of each month. Contact Jenny on 01303250298 for further information

Farmers Market:- Tuesdays 10 a.m. to 12.30 p.m. Stalls selling local produce every week, including (but not limited to) artisan breads, pies, meats, fruit, veg and a postal service.

Look out for details of the Garage Safari in September (contact Cherry Leppard) and the Craft Fair on 29th November Contact Jayne Stone. Details on Page 11 of Grapevine.

Capel-le-Ferne History Book

"Village in the Clouds"

**Copies still available £5 each
From Cherry - Tel: No: 01303 255114**

MacMillan Coffee Morning

**Friday
26th September
Bring and Buy**



**10am to 12.30pm
49 Old Dover Road
Capel-le-Ferne**



CAPEL-LE-FERNE YOUTH CLUB

Every 1st and 3rd Thursday in the month from 7.30pm to 9.30pm.

Please come along and your first evening is free!



Please ensure you collect your children from the hall, not the Car Park, even on light evenings.

Youth Club Annual General Meeting Thursday, 26th June in the Village Hall at 7pm.

Another Youth Club Quiz Night on Saturday, 27th September again in Capel School at 7pm.

Any issues/queries - Please contact the Chairperson, Simon on 07860803767 and find us on Facebook to keep up to date with all info about Capel Youth Club.

MATT HASTINGS

Plastering & Handyman services

- All aspects of plastering
- Repairs & Maintenance
- General Building • Re-Pointing
- Decorating & much more.

Mobile:
07801 293490
Email:
matt.hastings@fsmail.net
www.matthastings.co

BRIGHT IDEA

ELECTRICAL SERVICES LTD

Colin Newton

www.brightideaelectrical.com

enquiries@brightideaelectrical.com



T 01303 778366

M 07855 431330



The Great British FISH & CHIPS Supper
Supporting Spinal Injuries Association
Friday 16th May 2014

sia
spinal injuries association

Make the batter matter
Hold a Great British Fish and Chip Supper to help raise money to support our outreach services.

To request a fundraising pack:
Call 0845 071 4350
Email fundraising@siafishandchips.co.uk
Visit www.siafishandchips.co.uk

Registered Charity No 1054097

Have fun and raise money for the SIA



Judo I.B.F. Club ET.1978



Capel le Ferne Village Hall - Every Wednesday

Juniors (6-9 years) 5.30pm-6.30pm

Seniors (10 years +) 6.30pm-8.00pm

Senior Coach: Colin Carrott 3rd Dan Tel: 01303 258942

Technical Advisor: Colin Ogburn 3rd Dan

Tel: 07870 822 510. New Members Very Welcome

Up to 5 Qualified Insured Instructors & Coaches to give expert tuition. Come & try this DYNAMIC MARTIAL ART



Surgery: Date and time: Tuesday 1 April 2014 10.30 AM - 12.00 PM. Venue: Capel Village Hall

Police Contact Point: Date and time: Wednesday 2 April 2014 5.00 PM - 6.00 PM. Venue: Village Hall, Lancaster Avenue, Capel-le-Ferne,

Surgery: Date and time: Tuesday 13 May 2014 10.30 AM - 12.00 PM. Venue: Capel Village Hall

Surgery: Date and time: Tuesday 10 June 2014 10.30 AM - 12.00 PM. Venue: Capel Village Hall

CAPEL BAPTIST CHURCH
Capel Street. Services 10.30am.

Speakers for APRIL 2014

6th April Colin Patience (Communion)

13th Rev Ruddle

20th EASTER SUNDAY – Pam Barr (Communion)

27th Gloria Guest

ALL WELCOME TO THESE ACTIVITIES

If there are queries regarding these details,
please call 01303 251086. Gill Cooper

Please! A reminder that the public are requested not to park in front of the gates on Sunday mornings as this is a disabled access.



A S Maintenance

Local Handyman Services



Painting & Decorating
Plumbing

General Household Maintenance

Tel: 01303 884942

Mobile: 07505 134 732

Email: andy@as-maintenance.co.uk

Pro Services – Paul Relf Optimum Services

4 Queen's Lea, West Hougham, CT15 7BJ.

Tel: 01304 214166. Mobile: 07787 910961

Garden & Property Maintenance Services &
Handyman

No Job too small

Projects and all types of jobs you need doing in your garden,
or inside and outside your home.

I'm friendly, reliable, local and trustworthy.

If you would like to enquire about any job, without obligation,
it will be nice to hear from you.

InsideOut Cleaning and Maintenance

Carpet and upholstery cleaning

Window Cleaning

Cleaning of debris and leaves from gutters

Mould removal from conservatory's

fascia and gutters

Oven Cleaning

Patio Cleaning

www.cleaning-insideout.co.uk

Call for a free quotation

01303 250392 or 07842 624786

10% discount

for OAP's

Kent Surrey Sussex



Air Ambulance
A Charity That Saves Lives



Lions on track to help keep Air Ambulance flying at night

Night-flying Kent, Surrey & Sussex Air Ambulance is appealing for runners, swimmers and cyclists to sign up for this year's Tonbridge Lions Triathlon and help save lives 24 hours a day. Lions Clubs across the South East have pledged to raise £250,000 for the Marden-based charity over the next 10 years. The funds will be a significant contribution towards the additional £1million-a-year needed to provide a 24-hour service which was launched last month (December 18th). **The triathlon is to be held on May 5th at Tonbridge School's sports complex** which was used by the Australian Olympic team as a training base for the London 2012 games. Competitors can choose a sprint consisting of a 400-metre swim, 25km ride and 5km run or the standard route which is double the distance. Triathlon chairman Tom Simmons said: "This is the second year the Tonbridge Lions Club has arranged for the Tonbridge Triathlon to be linked up with Kent, Surrey & Sussex Air Ambulance. "We once again welcome the opportunity to be able to offer the means for the general public to take part in the triathlon and also raise funds for this much-loved and vital charity. "The Air Ambulance needs approximately £6m each year to maintain their service in the counties and provide 24- hour cover. The pilots, doctors and paramedics are extremely dedicated to their task and deserve all our support." Tonbridge was the first Lions club launched in the UK in 1949 and has raised more than £275,000 for charity in the last 10 years. The triathlon alone has raised more than £125,000 over 24 years and organisers are aiming to raise a total of £13,000 from this year's event.

There are 500 places available with an entry fee of £46 for the standard distance, £42 for teams of three and £39 for the sprint. To book a place go to www.tonbridgelions.co.uk or call 07549 949615.

Press Officer, Jamie Cheshire

07800 904194 • jamiec@kssairambulance.org.uk

www.kssairambulance.org.uk/Media



Capel-le-Ferne Beginners Running Group

Walk-Jog-Run, whatever your ability, why not have a go!

Meet at Capel Church Hall, Albany Road, CT18 7JT
Initial 10-week course, two sessions per week,
cost £5 per session

Every Tuesday at 9.30am & every Friday at 9.30am

Sessions start on Tuesday 29th April 2014

Registration and further information on
Friday 25th April 9.30am

Contact Sylvia on 01303 243614 or 07753502622

Or e-mail: barrett510@btinternet.com

Qualified & Fully Insured Leader, 10 years' experience.
Coach at Dover Roadrunners AC.

CAPEL-LE-FERNE PARISH COUNCIL

Summary of items discussed at meeting on Tuesday, 18th March.

- **The meeting received Kent County Council's Paul Linstead and Nick Thistle to address the Council on the future of our Community Warden provision in Capel-le-Ferne** – With the news of Chantel Blythe not returning due to becoming a “full time mum” and notification of just 1½ days per week future allotted time available, the Parish Council were concerned on the decrease of hours and limited coverage. The Councillors were assured that all endeavours would be made to cover any occurrences, but this adjustment was due to a financial and budget situation. Dave Bish will continue to be our Community Warden, attending the Village at Farmers' Market every Tuesday for surgery time, plus one other day. The members queried the amount of time in other areas of the District, being informed that the deployment of hours was considered closely and adjusted accordingly to “trouble hot spots”. The Councillors all agreed it was vitally important that this service receives as high a priority as possible and as much visible presence, being extremely essential. It was agreed by those present to address these concerns directly with Paul Carter (Leader of Kent County Council) and Ann Barnes (Kent Police Commissioner) to stress this could lead to an increase in anti-social behaviour.
- **Community Recreational Project** – Sub-committee was still working towards final funding, so again, please watch this space on page 7!
- **Equipment status** – Ground beneath the toddler swings now dried out and now not necessary for repair. Corrosion on both pedals of the junior cross trainer had been reported to suppliers and being dealt with. A fallen tree will be removed, adjacent to BMX area. A report of an excessive amount of rubbish at time of inspection by Councillor will be monitored. Bolts changed on signs to comply with Health and Safety. New permanent CCTV signs had been fitted; other signs to be ordered to stress the need to close the play area gates and dogs are not permitted in fenced areas. Replacement of some existing equipment in Infant Play Area will be placed on a “rolling programme”. Councillors Pilcher and Norris are investigating types and requirements requested and acknowledge by children in the Village, depending on funding availability.
- **Speeding on B2011** – The Councillors and resident volunteers continue to monitor this by way of holding “Speed Watch” sessions when speed indicator unit available. Funding was being sought to acquire a machine for village use, rather than rely on loaning equipment.
- **Land Allocation Local Plan** – Inspector had been due to visit all sites during March. It is hopeful that any change in documentation to reflect his decisions will be available for further consultation by the end of April.
- **Highways** – Councillors requested that all residents in New Dover Road refrain from parking on the grass verges, which is damaging the grass and daffodils considerably, causing the necessity for the Parish Council to spend the Precept Finances to restore these unsightly areas. It may be necessary to consider the installation of wooden posts along the road, similar to those recently set up in Capel Street. A meeting to be arranged with British Gas on the reinstatement to parts of the grass verges where recent works had been carried out. Pot-holes in Old Dover Road reported to Kent Highways and will be investigated further following completion of gas mains renewal works.
- **Neighbourhood Watch** – Street co-ordinators list compiled and a table at the Farmers' Market would be investigated to initiate recruitment to the Scheme and to make available, useful leaflets and booklets on crime prevention.
- **Crime Reports** – Three/four incidents of fly-tipping reported in Capel Street and Cauldham Lane - Clean Kent supplying warning signs for areas of concern. Graffiti to road signs dealt with and removed. Improvements to Lorries parking and cars for sale in laybys noted, although monitoring of this would continue.
- **Anaerobic Digester Plant Planning Application** – District Councillor Scales informed meeting that the conditions to the planning are now in draft format of 3 pages in length with all areas of village residents' concerns and issues taken into account and incorporated within this. It was hoped this will be available shortly.

Next Parish Council meeting is on Tuesday, 15th April at 7.30pm in the Village Hall (Small Hall).

A COPY OF THE MEETING'S AGENDA WILL BE AVAILABLE ON THE PARISH COUNCIL WEBSITE A WEEK BEFORE THE MEETING. <http://www.capel-le-fernepc.kentparishes.gov.uk/> ALL PARISH COUNCIL MEETINGS ARE OPEN TO THE PUBLIC, SHOULD YOU WISH TO ATTEND. HOWEVER, IF YOU WISH TO ADDRESS THE COUNCILLORS, PLEASE INFORM THE CLERK PRIOR TO THE MEETING! Further information on any of the above or to contact Parish Council, please write to Parish Clerk, 39 Victoria Road.

Tel: 01303 259564. Email: maureen.leppard@btinternet.com

For 1st Hand information from the Parish Council received direct to your computer request Clerk to add your email to the database, like our Facebook Page <https://www.facebook.com/CapelLeFerneParishCouncil> or, follow on Twitter **Twitter Account @CapelParishCoun**

Or visit our website <http://www.capel-le-fernepc.kentparishes.gov.uk/>

PLEASE GIVE THIS YOUR CONSIDERATION!

A vacancy still exists on the Parish Council which may be co-opted by the Members.

Anyone interested in applying to become a Parish Councillor, should write, giving some brief details of yourself, to the Parish Clerk at 39 Victoria Road, Capel-le-Ferne, or by email to maureen.leppard@btinternet.com by Monday, 14th April 2014.

SATURDAY, 28th JUNE 2014 - VILLAGE COMMUNITY EVENT

This year, it will be to commemorate the Centenary of World War I.

The Event is progressing well with amusements, dog show, Fire Brigade and Police attendance, competitions on skate-park (James Sheridan arranging in age groups), refreshments/bar in Village Hall, all agreed and booked for the day.

Other attractions being considered by the sub-committee – more details to follow!

A stone plinth, plaque and memorial garden, to honour those known Capel residents who have died in the service of their country during any conflict, is also being organised - thanks were expressed to County Councillor Geoff Lymer for funds from the County Members Grants scheme. The Sub-committee are already in possession of numerous names associated with this but, are appealing to local residents of the village for assistance. If you have any information on someone that should be included, please let the Parish Clerk know.

Parish Clerk, 39 Victoria Road, Capel-le-Ferne. Tel: 01303 259564. Email: maureen.leppard@btinternet.com

Look forward to hearing from you.

Capel Outdoor Recreational Facilities Update Olympic & Jubilee Legacy



WE ARE STILL WAITING TO SECURE FINAL FUNDING KEEP WATCHING THIS SPACE!

If you have any fund-raising ideas, raise some money yourselves for the items or wish to make a donation, please contact the Parish Clerk, Maureen Leppard – 39 Victoria Road. – 01303 259564.



Cherry Leppard, Maureen Leppard, Keith Pilcher,
James Sheridan & Jayne Stone
Capel-le-Ferne Community Project Group

Lynn Brisley
DDC Community Development Officer

Shepway Writers Group

Are you interested in creative writing? Now's your chance to put pen to paper and write short stories, poetry, or even that book you've been meaning to write. Our informal group meets every month in Folkestone. It's free to join, so why not come along and give it a go?

Contact Graham on 01303 259474 or 07722 560702.

DO YOU NEED AN ELECTRICIAN? LOCAL, RELIABLE, AFFORDABLE

- Rewires
- Garden Lighting
- New Circuits
- No job too small
- Free quotations
- Consumer unit changes
- Additional sockets
- Fire & Intruder Alarm
- All your electrical needs
- Insurance backed work



ElectricHall Ltd

Tel: 01303 647131 Mobile: 07980 448796

E mail: info@electrichall.co.uk

**We are a local, fully insured,
Part p registered company**

CAPEL EVENING WI

Hello everyone. As I write this the sun is shining and it is at least 17degrees outside.

As our President and Vice-Presidents were not available to take our meeting Sheila French 'Stepped into the Breach' and welcomed all members to our March Meeting and another new visitor, who had come to take a look at our meeting. Everyone stood to sing Jerusalem. Sheila then introduced our speaker for the evening, Sharon Lynn from 'Medical Detection Dogs'. Sharon brought along her husband, who had Type 1 Diabetes and his dog 'Lucky'. Her talk covered all aspects of 'Medical Detection Dogs' and their importance of saving lives. We witnessed a real life situation as Sharon's husband was having a bad day with his diabetes. Lucky was aware of this and on several occasions alerted Sharon to it. 'Medical Detection Dogs' are trained on three levels; 1) Diabetes, 2) Cancer and 3). A new one that has been introduced 'Bed Bugs'. A diabetes dog costs £10,000 per dog to train and a Cancer dog between £5,000 and £6,000. It also costs the owner between £1,000 and £1,500 per year to keep them. They are total supported by donations from the public and get no government support. Mary Mahon gave the vote of thanks. After Refreshments, we resumed the meeting and finished the rest of the evenings' 'business'. We then had 'Members Time' which was another amusing quiz from Christine May. Not as hard as last months (thank you for that Christine). The competition was a 'Dog in any Medium' which was an amazing array of doggy items. 1st Audrey Crouch, 2nd Gillian Holiday and 3rd Christine May. A big thank you goes to Sheila for taking our meeting and ensuring it ran smoothly in the absence of our President. (Thank you Sheila!)

The Speaker for April Meeting, Tuesday, 8th April, 'Taken with a Pinch of Salt'! It's about superstitions through the Ages. Competition = 'Your favourite superstition'. All new members and visitors are most welcome. Bye for now and keep safe. Talk to you all again next month.

**Don't forget Bingo in St Radigunds Church Hall on 11th April, at 7.00p.m
with a good helping of 'Scattergories' in the interval.
So please try to encourage as many people as possible to come along.**



Capel Active Retirement Association

Our next meeting is on Tuesday 1st April 2014 at 2pm in the Village Hall.

Subject: Kent & Sussex Air Ambulance

Please do come and join us to hear from this very worthy charity

Subject: KENT & SUSSEX AIR AMBULANCE. Please come and learn more how we can support this worthwhile charity.

Last month Paul Watts, owner of 'Home Instead' Senior Care, went to great lengths to explain to us why he believed in keeping people with Dementia out of hospital or residential care if at all possible, by early diagnosis and good access to the available services in the community. His company play a valuable role in this. But he also stressed the need for 'friends' to step into a helpful role with the person and/or their family, in order to contribute to a good quality of life for them. Dementia Friends was born to provide a helpful and understanding group of people in every community, and turning understanding into action. Paul is a trainer on Dementia, and his concern to remove the stigma that remains around the disease throws him into education, lecturing people from all walks of life including the NHS. Members will have enjoyed a lunch together at the Plough recently but look forward to a Day Trip on Tuesday May 20th to Savill Gardens – see separate advert – please join this if you can. We are always delighted to meet new people so please do come along as a guest for any of the monthly meetings (first Tuesday afternoon of each month) or contact the Secretary on 250144 with any enquiries. Looking ahead to May's AGM, please be sure to pick up your pack at the April 1st meeting.



DOVER CHORAL SOCIETY

Saint Matthew Passion

(J. S. Bach)

THE CONNAUGHT ORCHESTRA
(Leader – Amanda Wyatt)

and
DOVER CHORAL SOCIETY
Conducted by
STEPHEN YARROW

DOVER TOWN HALL
Saturday 5 April 2014 - 7:30 pm

TICKETS £12 (students £6) AVAILABLE AT THE DOOR
FROM DOVER TOURIST INFORMATION CENTRE
(DOVER MUSEUM – MARKET SQUARE)

MEMBERS OF DOVER CHORAL SOCIETY OR CALL 01304 820149



www.doverchoralsociety.org.uk
Follow us on twitter @DoverChoral
Find us on Facebook



Programme of Forthcoming Events

Capel Active Retirement Association

You are very welcome to join us

<u>MAY</u> ANNUAL GENERAL MEETING	<u>JUNE</u> MERCY SHIPS
<u>JULY</u> THE BIG BAND ASSOCIATION	<u>AUGUST</u> FOLKESTONE HISTORY
<u>SEPTEMBER</u> AGE UK	<u>OCTOBER</u> CREATIVE GARDENING
<u>NOVEMBER</u> WINDMILLS & CANALS	<u>DECEMBER</u> CHRISTMAS PARTYTIME

CapelARA Day Trip

On Tuesday 20th May 2014

to Savill Gardens (Great Windsor Park)
Plus River Cruise, Lunch & Afternoon
Strawberry Tea

It will be an early start,
leaving from the Village Stores at 7.15am,
but sounds an inviting and full day

Cost: £29.50

Please contact Adrian on 250392
to book your seat



Capel-le-Ferne Playgroup

Village Hall, Lancaster Avenue, Capel-le-Ferne, CT18 7LX
capelpreschool@btinternet.com
Running for over 40 years

Ring Alison on 07977838609 or drop in during one of our sessions.

A few vacancies available

*** Ofsted 2010 - Outstanding environment and good in all other areas. ***

Open Term Time - mornings Monday, Wednesday, Thursday & Friday.

Stephen Huxtable Garden Services

- Private and commercial garden and grounds maintenance
- Grass cutting, Hedge cutting, Garden clearance, Turfing.
- High quality fencing supplied and erected

Free estimates

01303 891720

www.shgardenservices.co.uk





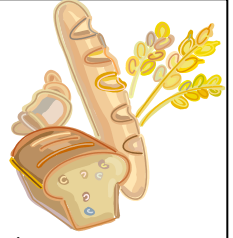
FARMERS MARKET NEWS - FIND US ON FACEBOOK!

Registered with the Kent Farmers Market Association

5* Award from Dover District Council

5* Award Environmental Health Department

Now in our 11th Year



Has Spring arrived? The Daffodils are in bloom and the sun has been shining – we certainly hope so!

With the onset of Spring, we are seeing new stalls arriving, although we also lose some. We have unfortunately lost Desserts 4U, but we have The Flapjack Company coming along now. They are producing 18 different flavours of Flapjack – so we hope something for everyone! We are at present awaiting confirmation of a Freshly Ground Coffee stall as well as Margate Smokehouse (producing a variety of smoked products). R & R Ales are hoping to return sometime during April also. The Real Pasta Company is doing well with a wide range of Pasta, fresh and dried, along with delicious sauces. She is now also producing a weekly RECIPE free to pick up! The Craft Hall is still popular too, with a wide variety of stalls and who rotate to give customers even more variety. Plus our resident Photographer is also on hand for those passport photos now holidays are being planned!

Our 'Postal Service' is also alongside the Crafts

We now have the following products on sale:- Fish, Meat, Eggs, Preserves, Jams, Honey & Pickles, Delicatessen, Smoked Fish, Meat & Cheese, Italian Pasta Dishes, European dishes, Curries & Accompaniments, Bread, Cakes, Flapjacks, Pastries, Vegetables, Fruit, Fudge, Freshly Ground Coffee, Fruit Liqueurs, Kentish Ale, Plants and a wide variety of Crafts.

Our WEEKLY DRAW is proving very popular and we have had many satisfied winners. For just 50p a go, there's a chance of winning vouchers to be spent at the market – no profit is being made, all money raised from the Draw goes back into prize vouchers.

Please Note:- The Market Opens at 10 a.m.

For your own Safety, and before an accident happens, we request this time be recognized due to heavy boxes etc being delivered during setting up.

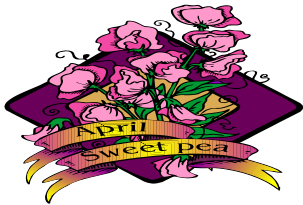
We are sorry for any inconvenience, and we thank you for your co-operation.

AN APPEAL

Would you, or anyone you know, be interested in 'coming on board' the Farmers Market Committee to help run it?

We, Cherry and Jenny, have been running the market now for nearly 11 years and, although we have no plans to discontinue at the present time, neither of us are getting any younger! We therefore need one or maybe two others to learn the ropes for the future and to help cover when one of us is ill or on holiday. Maybe you've just retired and want something to do, or are new to the village and want to get involved? We also require someone to run the Weekly Draw for us please. If you are interested in either or both of the above, please contact Cherry 255114 or Jenny 245399 to discuss what is involved.

Please note: The products for sale are produced (in the majority of cases) by the stallholder, in Kent, unless clearly marked otherwise. We should point out that we ensure our producers hold the relevant certificates i.e. a public liability insurance and, where necessary, health and hygiene certificate and kitchen registration documents.



CAPEL-LE-FERNE GARDENERS ASSOCIATION

CAPEL GARDENERS Spring Show will take place at the Village Hall on Saturday 5th April. Doors open to public after judging about 2.30pm. Admission is 50pence and free to members. There will be a; Tombola and plenty of cakes and refreshments for sale.

The April monthly meeting on 15th April at the Church Hall has a talk on "Age proof gardening" given by Mr Malcolm Whitnall and the monthly competition is for One Specimen Tulip.

Anyone wishing to enter the show should submit their entries to the Show Secretary by the previous Monday. No entries will be accepted on the Day.

Membership fees are now due, £4.00 per annum.

Contact Gess Harman on 01303-255661 for any information or enquiries regarding events. All are welcome to our activities.

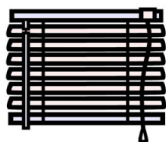
Come and join us!

Are you new in the Village or, if not, have you ever thought of joining a gardening society? Capel-le-Ferne Gardeners are an enthusiastic group who offer you a very warm invitation to "give us a try". We hold three shows per year, Spring, Summer and Autumn and have monthly meetings which include talks, quizzes and social events throughout the year. Most houses in Capel have quite large gardens and I am sure that many of you will have a few flowers, shrubs or vegetables that you could enter in one of our shows. We would be delighted to welcome new members. Our meetings are held on the third Tuesday of each month in the Church Hall, Albany Road, at 7.30pm. If you have any queries, please do call me on 01303 255241.



FITTING CREATIONS

BLINDS – CURTAINS – SHUTTERS



**Friendly Family Business
Local to you**

01303 894882 07506 144427

www.fittingcreations.com

info@fittingcreations.com

**save £££s on skip hire
across Kent**

Call us today on

01622 611931

4, 6, 8 & 12yd Skips

Domestic & Commercial

Fully recycled at our own facilities

Same Day Delivery / Collection

Permits Arranged

Competitive Rates

COUNTRYstyle
RECYCLING

www.countrystyleskips.co.uk

PLASTERING

Fully Insured

**All Aspects of Domestic Plastering,
Drylining, Coving & Rendering
Tidy, Friendly & Reliable.**

For a free quote contact:

Luke Holness

Mob: 07570 782216

Tel: 01303 255679

TO AND FRO CARS



AIRPORT TAXI SERVICE - GOING ON HOLIDAY?

**CAPEL RESIDENT PROVIDES EXCELLENT
TRANSPORT IN A MODERN ESTATE CAR FOR YOUR
COMFORT REGISTERED IN SHEPWAY, FULLY
INSURED**

CALL - 07776040858

OR E-MAIL - toandfrocars@gmail.com

GET A QUOTE

**ALL UK & EUROPE DESTINATIONS – AIRPORTS -
CITIES - PORTS - RAILWAY STATIONS**



CAPEL-LE-FERNE BOWLING CLUB

Jenny Carter 01303 250928
Barry Mansfield 01303 257157
Ros Chandler 01303 255862

Congratulations! To Julia and Eric Beauchamp on their Diamond Wedding Anniversary (60 years) on the 20th March!
Eric and Julia married in Wandsworth London in 1954. Eric has been an active member of the club for many years
The club competitions have now finished and the committee would like to thank all those who took part and those
members who came along to give support. Results below;

We have two teams representing the club at the Lympne triples competition.

The presentation dinner will be on 12th April at the Folkestone indoor bowls club, Cheriton Road, at 7.30pm.

On Good Friday 18th we have our annual Bowls and Buns 10.30 till 12.30 please come and support the club.

The AGM takes place on 28th April in the small hall 6.30pm for a 7pm start. Come along and have your say.

Our league teams are doing well in the East Kent League currently in fourth place with one home and one away match to
play, it's going to be a very close final.

Here are the winners and runners up of the club Competitions

Mens Singles winner Malcolm Bailey Runner up Barrie Pape.

Ladies Singles winner Rachel Chandler runner up Ros Chandler.

Mixed Singles winner Barry .Mansfield runner up Wendy Leeming.

Nominated Pairs winners Elaine Wells and Barrie Pape.

Runners up Sylvia Ovenden and Wendy Leeming.

Drawn pairs winners Elaine Wells and Malcolm Bailey.

Runners up Wendy Leeming and Barry Mansfield.

Triples winners Mick Santer, Sylvia Ovenden and B.Pape.

Runners up Les Miles Malcolm Bailey and Brian Wilson.

USEFUL CONTACTS INCLUDING ACTIVITIES & CLUBS	CONTACT NAMES	TELEPHONE NUMBER
Police Community Safety Officer	Mrs Gretel May	07772226209
Community Warden	Mr Dave Bish	07811 271020
Parish Council Chairman	Mr Clive Goble	01303 240566
Parish Council Clerk	Mrs Maureen Leppard	01303 259564
Village Hall Webmaster	Mr Peter Jones	01303 248149
Village Hall Committee Chairman	Mrs Jayne Stone	01303 211480
Village Hall Committee Vice-Chairman	Mr Brian Wilson	01303 240405
Village Hall Committee Secretary	Sally Cook	253838 / 077304725838
Village Hall Committee Treasurer	Sue Leaning	01303 256704
Village Hall Committee Lettings Secretary	Mrs Joan Woodsford	01303 252354
Village Hall Committee Noticeboard	Committee Members	(£1 per month)
Village Hall 100+ Club	Mrs Jenny Carter	01303 250928
Village Hall Farmers Market	Jenny & Cherry	245399 / 255114
Village Hall Quiz Sheets	Jenny & Cherry	245399 / 255114
Village Hall Table & Chair Hire	Mrs Jayne Stone	01303 211480
Bridge (Fridays)	Mr Bob Jones	01233 756362
Brownies	Mrs Sandra Sharpe	01303 241767
Capel Active Retirement Association	Mrs Sally Solly	01303 250144
Capel Art Group, St. Radigunds Church	Mrs Susan Dootson	01303 243508
Capel Baptist Church	Mrs Gill Cooper	01303 251086
Divas Dance	Miss Rebecca Uden	01303 893650
Fit Friends – Pilates	Mrs Pam Vivien	01303 244322
Gardeners Association	Mr Gerald Harman	01303 255661
Guides	Miss Rachel Chandler	01303 210702
Judo	Mr Colin Carrot	09850 548769
Playgroup	Mrs Alison Cloake	07977 838609
Remote Control Car Club	Mr Derek Jeffrey	01303 259842
Short Mat Bowls	Mrs Ros Chandler	01303 255862
St. Radigunds Church	Rev. Brian Williams	01303 243784
St. Radigunds Players & Choir	Mr Jerry Spillett	01303 242146
St. Radigunds Church Hall Bookings	Steve Lennard	01303 670445
Twinning Association	Mrs Jayne Stone	01303 211480
W.I.	Mrs Jayne Stone	01303 211480
Welcome to Village Letter	Mrs Debbie Catling	01303 251525
Youth Club	Mr Simon Withey	07860803767

Please let me know of alterations or additions to above list
Maureen Leppard (Editor) - (Tel: 01303 259564) or Email:
maureen.leppard@btinternet.com

Simpson Aerials

Your local aerial installer
 We install, repair and tune all TV and Radio
 Aerials and Satellite, including Freeview,
 Freeview Plus, Freesat and Freesat plus. Est: 1988



Call Peter on
01303 250360 or
07971807150



**To all our readers, organisations
 and advertisers -**

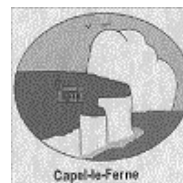


The Village Hall Website

is being revamped and Sally Cook will take on the role as editor – we are grateful that Peter is remaining as webmaster - his expertise is essential. Sally will be contacting various organisations to see if they would like to be included in the website – at no cost to themselves. In the meantime feel free to contact her

eures1994@yahoo.com.

All we ask is that someone takes ownership of ensuring the information is accurate and up to date.



**PARISH COUNCIL
 INFORMATION CAN
 BE FOUND ON**

WEBSITE

<http://www.capel-le-fernepc.kentparishes.gov.uk/>

FACEBOOK PAGE

<https://www.facebook.com/CapelLeFerneParishCouncil>

TWITTER ACCOUNT

@CapelParishCoun



Mobile Library Every Tuesday

Old Dover Road - 10.25am - 10.40am

Victoria Road - 10.50am - 11.20am

Reece Adams House - 11.25am - 11.55am

Village Hall - 12.00 noon - 12.30pm

Did you know.....Kent Library services run many services other than the mobile library visiting Capel which local residents may find helpful. These include;

- ❖ A home library services for those unable to visit the library, such as carers, those with ill health or disabilities. If you would like to know more ring 03000413131 or visit the library in Grace Hill Folkestone.
- ❖ A postal spoken word service for registered blind and partially sighted people. Books are delivered and returned by Royal Mail using a 'red wallet' system. Contact 01622 905 214.
- ❖ An e book service. E books can be downloaded onto tablets, smart phones and some kindles. An app is available – visit: kent.gov.uk/libraries or ask in a local library. If you have trouble downloading the app and setting up the system, there is a help line 01622 696 428.
- ❖ Participating in the 'reading well books on prescription scheme' relating to a range of self-help books to help manage your well-being. Ask at the library or see www.ewadingency.org.uk/readingwell



Computer Problems Solved
Tel: 01303 241325 Mob: 0796 8129 902
Usual Fee **£35**
*PCs, Laptops, Tablets setup with Internet, Email, Security & Office Programs – Ring for new PC prices
*PC / Laptop upgrades and repairs
*Business Web sites built & hosted from £10 pm
*Tuition available by a qualified tutor
Ring Tony for a fast and friendly service
See www.kimcomputers.co.uk for details

www.villageyak.co.uk

CAPEL VEHICLE SERVICES

All makes of cars serviced and repaired.
MOT repairs, mechanical and welding.
Tyres, Exhausts, Batteries & Towbars
Supplied and fitted

Competitive rates. No VAT.

Friendly efficient service

Call John Horne 01303 255894 or email:

Johnhorne@amserve.net

Local free collection and delivery available if required
MOTs

Roger Crowther
rwcrowther@btinternet.com
Experienced and fully qualified Handyman
For free estimate tel.
01304 822649
07543 852682
All jobs, large or small.
5% discount for OAPs.
References available.



Carpentry, painting & decorating, tiling,
misc. electrical and plumbing works, garden
structures, odd jobs and repairs.

CAPEL
groundworks



- All types of paving (driveways, patios, pathways)
- Full driveway & dropped kerb packages
- Dropped kerbs
- Bricklaying & retaining walls
- Tarmac & concrete
- All types of groundworks including foundations, drainage, etc

Contact us for a free quote

T: 01303 253437 M: 07788 146673

capelgroundworks@btinternet.com

www.capelgroundworks.co.uk

Absolute Security LOCKSMITHS

Opening hours: Mon-Sat 9am – 6pm

No call out charge – 24 hours, 7 days

All types of locks, open-supplied-fitted

Boarding Service - Emergency Repairs.

Key Cutting. Domestic & Commercial. Shutters,
Grilles, Bars, Safes. Video/Audio Entry Systems.

Fitting Service Available.

01303 210057 / 07887652507

G B Haworth



Painter & Decorator

Interior & Exterior

Free Estimates Capel - 244206

Do you

1. Need an extra telephone point in your house?
2. Need to relocate your existing telephone points to a more convenient place?
3. Need network cabling or system installation for your business?



For excellent rates call **JOHN @ j.waller services.**

Fully qualified ex BT engineer with 12 years experience.

07766 068100 01304 225420

www.j-wallerservices.co.uk

Half the price of BT OPENREACH GUARANTEED

GRAPEVINE ADVERTISING from 1st April 2014

This space could be advertising your commercial /business venture or, non-village organisation event.

Size 9cm x 3.5cm £ 10.00 Size 9cm x 7cm £15.00

Size 9cm x 13cm £22.00. Size 20cm x 13cm £38.00 (½ page)

Payment in advance. Cheques payable to

Capel-le-Ferne Parish Council

**For further details contact Parish Clerk at 39 Victoria Road,
or Tel: 01303 259564. Email: maureen.leppard@btinternet.com**

Recycling/Waste Collection Dates:

Food Waste, Rubbish & Green Waste

Fridays, 4th and 18th April

Food Waste & Recycling

Fridays, 11th and 25th April

Missed Bins - Very occasionally your bin may not be collected.
Therefore if your refuse or recycling was out on the kerbside before 7am
on your collection day please call 01304 872428 or email
waste@dover.gov.uk and they will come back for it.
Please note that you are required to report the missed bin no later than
one day after your collection.

Items for May issue to be with Maureen Leppard (Editor)
at 39 Victoria Road, Capel-le-Ferne CT18 7LT, (Tel: 01303 259564) or
Email: maureen.leppard@btinternet.com by 6pm, Sunday, 13th April 2014

The Lighthouse Inn 111 Old Dover Road CT18 7HT
info@thelighthouse-inn.co.uk www.thelighthouse-inn.co.uk 01303 254080



Channel Views Alfresco Dining Teas Coffees Breakfasts Pub Food Sunday Roast with our Resident Pianist En Suite Rooms Dogs Welcome
 Weddings Wakes Private Parties Closed Mondays
5*FOOD HYGIENE RATING

OPEN ALL DAY EASTER WEEKEND

EASTER SUNDAY

FAMILY FUNDRAISING DAY IN AID OF SHOOTING STAR CHASE CHILDREN'S HOSPICE.

CHILDREN'S EASTER EGG HUNT MIDDAY!

BOUNCY CASTLE

CAR BOOT SALE - BOOK YOUR PITCH - SMALL CAR £5. VAN £10.

CARLESBERG £2.50. DOOMBAR £2.50

Raffles

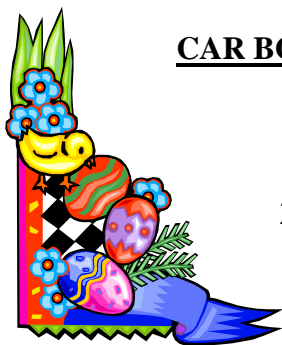
1st Prize Harrods Easter Egg Hamper

2nd Prize Harrods Easter Bunny + Many More PRIZES

BBQ - MUSIC - FOOD - TEAS - COFFEE -

12TH APRIL : FOLKESTONE BLUES BAND.

19TH APRIL : THE GARY DEAN BAND



At last, following a long wet winter, the season appears to be turning a corner and we have had some really warm spring days. For those of us who enjoy gardening or for those who have a plot on an allotment to grow their own vegetables and flowers, there is but a small window of time with which to sow seeds, take cuttings or prepare the ground for sowing. Those of us who undertake gardening in their own gardens or on an allotment will find a therapeutic effect carrying out what are simple tasks, though at times physically demanding. The health benefits are many, the mental therapy of being able to carry out what may appear to others as a mundane task, however that task allows you to relax, to become lost in your thoughts or to plan for an event at some time in the future. The physical effort uses a multiple of muscles around your body which will in turn consume calories, plus you are out in the open allowing your body to absorb that vital vitamin D, which may ward off some ailments.

Being out working the ground in this way should make you more aware of nature and the immediate environment, so you will understand that you would not entertain cutting your hedges after February to prevent disturbing nesting birds, thus, hopefully some of our diminishing bird species such as the Sparrow, Blue Tits, Starlings and some of the Finches that were so plentiful in the 1970s may gradually build to their numbers of a few decades ago. Basically one can enjoy the benefits of the countryside to improve both mental and physical health and it does not cost a penny.

There are many ways to enjoy the countryside even if you do not want to work in the garden, you can walk, jog, run, ride or drive. These can be all done on Public Rights of Way, by using Footpaths, Byways, and Bridleways, Restricted Byways, Permissive Paths or Green lanes. But who may use these various routes? Here is a simple explanation for your reference.

A Footpath is for use by pedestrians and dogs kept on a lead. The footpath is denoted by a yellow arrow.

A Bridleway can be used by pedestrians, horse riders, pedal cyclists. Pedal cyclists should give way to horse riders, horse riders and pedal cyclists are required to give way to pedestrians. Bridleways are denoted by blue arrows.

A Restricted Byway can be shared by pedestrians, horse riders, pedal cyclists and non-motorised vehicles. Bear in mind the word "motorised" is not restricted to an internal combustion engine, it can apply to an electric engine too. Restricted Byways are denoted by mauve arrows.

A Byway can be shared by pedestrians, horse riders, pedal cyclists and certain motorised vehicles. These Byways are clearly denoted on ordinance survey maps.

A Permissive path is a route across private land that the owner of that land permits to be used as a footpath, bridleway or a road. The landowner can withdraw permission or vary the route. These routes are denoted by a black or white arrow.

A Green lane is not a legal definition for a "right of way." Green Lanes may carry all of the above or have no rights of way at all.

Vehicle users and horse riders should be aware that they are not exempt certain aspects of the Road Traffic Act regarding offences such as “wanton furious driving or riding.” **County Councillor Geoffrey Lymer.**

My work has recently focussed on the issues that people in Capel-Le-Ferne are most concerned with – getting more jobs and investment in our area.

Jobs and Apprenticeships

The need for secure and well paid jobs is one of people’s biggest concerns locally. So it’s encouraging we’re seeing more people getting back to work. Local unemployment has fallen more than 20% in the last year. This is good - yet there is still so much more to do to turn around the shocking 50% rise in local unemployment between 2005-10.

To do my bit, I hosted my second annual jobs fair at Dover Town Hall on 7th March. The Hall was packed with over 1,300 people looking for new jobs and career opportunities. Over 30 businesses looking to fill vacancies attended. They told me they received many high quality CVs and they expected to take on many of the jobseekers they met at the fair.

The future for our young people is also getting sunnier. The number of apprenticeships in our area has doubled in the last four years from 440 to 880. Apprenticeships are a key ladder to gaining skills and opportunity. This rise shows a positive future for the skills and knowledge of our young people. Youth unemployment has dropped 23% locally in the past year. The rise in apprenticeships is playing an important role in giving our young people more chances in life.

What's more, we are getting back the jobs that previously went overseas. Earlier this month, I visited Multipanel UK’s new factory complex in Eythorne. They are building an assembly line to make hi-tech aluminium panels. The factory is state of the art and will see 70 jobs brought back to the UK from China.

Fair Share of Healthcare

In Parliament, I continue to campaign to get a fair share of healthcare in our area. We want to see extra investment in our local health services. The new, fit for purpose, Dover Hospital is now being built. So a new state of the art hospital will be just three miles away from Capel-Le-Ferne. This should save people long journeys to Ashford and Margate.

Community-Led Port

When I was elected in 2010 our port was about to be sold to the French or whoever. All that was required was a flick of the Minister's pen. The People's Port campaign put a stop to that. I continue to campaign for a community-led port in Dover. Our community should have a stronger say on the future of the port - and must be at the heart of any partnership to transform the seafront and help get more high quality, skilled, well paid local jobs. It will be a long road, yet a World class Dover that Capel-Le-Ferne is proud of is my purpose. I want everyone in our community to share the benefit of Dover's transformation.

Charlie Elphicke MP, Member of Parliament for Dover and Deal. charlie.elphicke.mp@parliament.uk www.elphicke.com



ANSWERS - IT BEGINS WITH AN 'S' ANSWERS

THANK YOU FOR YOUR SUPPORT

This quiz is run by The Capel Le Ferne Village Hall Management Committee, Registered Charity No 281786

1.	Sofa	13	Sombrero	26	Salt	38	Sardines
2	Sausage Dog	14	Sandwich	27	Sarah	39	Symphony
3	Salad	15	Saucer	28	Submarine	40	Solo
4	Spring	16	Scouts	29	Sweet Pea	41	Shorthand
5	Sometimes	17	Skates	30	Swift	42	Sandalls
6	Subjects	18	Saucepan	31	Sinatra	43	Single
7	Shattered	19	Shelves	32	Shotgun	44	Suggestion
8	School	20	Sooty	33	Sunday	45	Swede
9	Sussex	21	Sell	34	Swear	46	Scrabble
10	Sauce	22	Shuffle	35	Sunshine	47	Sudden
11	Squirrel	23	Sixpence	36	Soap	48	Solicitor
12	Steam Train	24	Ship	37	Shopping	49	Strict
		25	Skip			50	Saxophone

