



# GRAPEVINE

Capel-le-Ferne Village Newsletter  
APRIL 2013 - ISSUE NO: 214



**Capel-le-Ferne Gardeners' Association**  
Capel Gardeners Spring Show will be held at Village Hall on Saturday 6<sup>th</sup> April doors open 2.30pm.  
Any enquiries about membership or activities call Mr Gess Harman on 01303-255661



## **CANCER RESEARCH**

### **JUMBLE SALE**

**We are holding our Spring Jumble Sale on Saturday 13<sup>th</sup> April at 2 pm.**

This is just a reminder that there's still time for you to sort out a few more items you might no longer need, that you think might be of use to someone else. Oh, and to remind you to come along too! If you do have any good quality jumble please bring it along to the hall on the morning of the 13<sup>th</sup>. It will all help to raise much needed funds. Or if it's too large an amount and you'd like it collected ring: 01303 254740 or 07949546011. Many thanks to you all! The Organisers



**Samaritans - Murder Mystery Evening**  
**13th April, 2013 7.30p.m.**  
**£5 per head @ Capel Village Hall.**

**BOOK SALE**  
Plus Jigsaws Videos DVD's & Audio Books  
**SUNDAY**  
**14th APRIL**  
**10.30 a.m. to 12 noon**  
**VILLAGE HALL**  
**LANCASTER AVENUE**  
**CAPEL-LE-FERNE**  
**FOLKESTONE**  
**CT18 7LX**



## **CAPEL-LE-FERNE PRIMARY SCHOOL**

### **Parents' & Friends' Association**

Capel Street, Capel-le-Ferne.

Contact the school office on Tel: 01303 251353.

Email: [office@capel-le-ferne.kent.sch.uk](mailto:office@capel-le-ferne.kent.sch.uk)

**Quiz Evening In School Hall,**  
**starting @ 7.00pm on 20<sup>th</sup> APRIL**



**a 60's evening with**

## **CHICORY TIP**

**Saturday**  
**27th April**  
**at 7.30 p.m.**



**Capel-le-Ferne Village Hall**



Tickets £8  
from 29 Albany Road,  
Capel-le-Ferne  
Bring your own food & drink  
Raffle

## **INSIDE CONTENTS**

Church Benefice	Page 2
Village Hall Management Committee	Page 3
Capel Baptist Church	Page 5
Parish Council	Page 6
Community Recreation Project	Page 7
Neighbourhood Watch	Page 7
Farmers Market	Page 9
List of Contact Details	Page 11

*If you know the details of your event in advance, please let Parish Clerk know so organisations avoid booking same date*

## **"WHAT'S ON" IN CAPEL-LE-FERNE**

6 <sup>th</sup> Apr	Gardeners Association Spring Show (page 5)
8 <sup>th</sup> Apr	Carl Spencer a 'Musical' talk (Page 2)
9 <sup>th</sup> Apr	WI meeting: The power of Music
12 <sup>th</sup> Apr	A talk with Musical Illustrations (Page 2)
13 <sup>th</sup> Apr	Cancer Research Jumble Sale Village Hall
13 <sup>th</sup> Apr	Samaritans Murder Mystery Evening (front page)
14 <sup>th</sup> Apr	Book Sale @ Village Hall (Page 3)
20 <sup>th</sup> Apr	Capel School PFA Quiz Evening @ 7pm
23 <sup>rd</sup> Apr	Farmers' Market 10 <sup>th</sup> Anniversary
27 <sup>th</sup> Apr	Chicory Tip (Page 3)
10 <sup>th</sup> May	Ann Finney on Glen Miller @ Church (Page 2)
11 <sup>th</sup> May	Neighbourhood Watch meeting 2pm-4pm (page 7)
11 <sup>th</sup> May	Youth Club Quiz Evening @ the School 7pm
14 <sup>th</sup> May	WI meeting: Makatono
8 <sup>th</sup> Jun	Folkestone Airshow (Capel will be taking part)!
11 <sup>th</sup> Jun	WI Meeting: Origami
14 <sup>th</sup> Jun	Al Jolson- the Man and his Music (Page 2)
27 <sup>th</sup> Jun	Youth Club AGM @ Village Hall - 7.30pm
6 <sup>th</sup> Jul	Capel School Summer Fayre
9 <sup>th</sup> Jul	WI meeting: Dungeness to Diamonds
12 <sup>th</sup> Jul	Musical Theatre 50's to present day (Page 2)
12 <sup>th</sup> Jul	Capel Twinning Association - BBQ
14 <sup>th</sup> Jul	Battle of Britain Memorial Day
27 <sup>th</sup> Jul	WI - Afternoon Tea Party in Church Hall
10 <sup>th</sup> Aug	Agape Gospel Choir/Jazz Group (Page 2)
13 <sup>th</sup> Aug	WI Meeting: Mercy Ships
1 <sup>st</sup> Sept	Garage Sale Safari (page 3)
10 <sup>th</sup> Sept	WI Meeting: Wartime fashions
13 <sup>th</sup> Sept	Dr John Ray - The Battle of Britain (Page 2)
15 <sup>th</sup> Sept	Battle of Britain Day Service
28 <sup>th</sup> Sept	Youth Club Quiz Night at Capel School at 7pm.
8 <sup>th</sup> Oct	WI meeting: Ecuador, Amazonia to the Andes
27 <sup>th</sup> Oct	Indoor Boot Fair
2 <sup>nd</sup> Nov	Christmas Craft Fair (page 3)
8 <sup>th</sup> Nov	Capel School Firework Display
10 <sup>th</sup> Nov	Remembrance Day @ Battle of Britain Memorial
1 <sup>st</sup> Dec	Indoor Boot Fair
7 <sup>th</sup> Dec	Capel School Christmas Fayre
26 <sup>th</sup> Jan	Indoor Boot Fair
23 <sup>rd</sup> Feb	Indoor Boot Fair
30 <sup>th</sup> Mar	Indoor Boot Fair

## Benefice Services for APRIL 2013

Date	Alkham	Capel	Hougham
Sunday 7th	Evensong 6:30pm	Sung Eucharist 9.30am	Worship Tog'r 11am
Sunday 14th	Sung Eucharist 9am	Worship Tog'r 11am	
Sunday 21st	Family Service 11am	Evensong 6pm	Sung Eucharist 9.30am
Sunday 28th			Benefice Eucharist 10am

Spare a thought for Justin Welby, the newly enthroned Archbishop of Canterbury. After ten years in the job, Dr Rowan Williams told *The Daily Telegraph* that he had concluded that Britain possibly benefits from having someone to be angry with, and that he had got off more lightly than some. Whatever Archbishop Justin does or says is bound to be criticised by somebody.

I wonder, is the Church itself there for people to be angry with, too? I once heard of a woman who was a churchgoer, and passionate about animal rights. She talked to other members of the congregation, offered them pamphlets and invited them to meetings, but nobody seemed to show any interest. Surely the Church should have been doing more for animals? In the end she left in disgust.

A while later, she and the Vicar met while shopping. He remarked that he had not seen her in a while, and how was she? There in the supermarket she poured out her anger and frustration – the Church just didn't care about animal rights, she finally told him.

"It used to," he replied. "But then you left."

Brian Williams

### Capel-le-Ferne Church Hall Fund

Our 2013 programme for the 2<sup>nd</sup> Friday of the Month talks in St Radigunds Church, Albany Road started on the 8th of March when Nicholas Reed gave us a fascinating talk about his father Ronnie Reed and The Man Who Never Was. 63 attended on a miserable wet and windy night but all had a most enjoyable evening. Many thanks to Nicholas!

Our second evening is on **8th of April** when we are extremely fortunate in having **Carl Spencer** who is one of the best Cornet players in the Country and he will be giving a 'Musical' talk on the subject 'Where did Swing Come From' Carl is an acknowledged expert on early traditional jazz music and you can see and hear him in action with his group on You Tube. Just Google **Spencers Nighthawks** and you will find out what a superb musician he is.

#### **This really is an evening not to be missed if you love traditional jazz and Swing music.**

Tickets £5 are available from me, just ring 01303 251403, or you can pay on the night. Doors open at 7pm for 7.30pm.

**All evenings start at 7.30pm with doors open from 7pm and take place in the church rather than the church hall**

May 10<sup>th</sup> - **Ann Finney on Glen Miller**. June 14<sup>th</sup> - **David McCarthy UK Rep for The International Al Jolson Society will present Al Jolson- the man and his Music-The Life and Music of the World's First Super Star** - David gave us an introduction to Jolson last year which was an intriguing eye opener to many and he has been invited back due to many requests to hear more of Jolie.

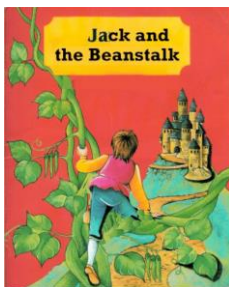
July 12<sup>th</sup> - **Keith Radford** - Back again to give us his latest talk **Musical Theatre from the 50's to the present day**.

This talk will particularly appeal to those who come on my theatre trips as he will be covering many of the shows we have been to over the last 13 years.

August 10<sup>th</sup> (Saturday) - **The Folkestone Agape Gospel Choir and Jazz Group**. September 13<sup>th</sup> - **Dr John Ray on The Battle of Britain**

Tickets are available from me. **phone 01303 251403 or e mail to [john.e.oliver@talktalk.net](mailto:john.e.oliver@talktalk.net)**

**John E Oliver, Chairman - Capel Church Hall Fund**



#### **St Radigund's Players**

Once again, a very BIG THANK YOU to all those who took part in this year's pantomime "Jack & the Beanstalk" which was enjoyed by all. Thank you to everyone who came and watched the performance. Also, thank you to Amin Stores, the Farmers' Market and Capel Primary School for helping to sell the tickets.

Sales totalled in excess of £1,000.00. Further details will be published when accounts and expenses have been finalised and verified by the committee. Watch this space!

The St Radigunds Players would like to thank all the generous helpers who made such a difference to Friday and Saturday night. The volunteer parents helped the pantomime to run smoothly. Angela Parkes and her team arranged the refreshments and raised £268 and those who contributed to our red-nosed donkey raised £70 for Comic Relief. Thank you all.

### **TO AND FRO CARS**



AIRPORT TAXI SERVICE - GOING ON HOLIDAY?  
 CAPEL RESIDENT PROVIDES EXCELLENT  
 TRANSPORT IN A MODERN ESTATE CAR FOR YOUR  
 COMFORT REGISTERED IN SHEPWAY, FULLY  
 INSURED  
 CALL - 07776040858  
 OR E-MAIL - [toandfrocars@gmail.com](mailto:toandfrocars@gmail.com)  
 GET A QUOTE  
 ALL UK & EUROPE DESTINATIONS – AIRPORTS -  
 CITIES - PORTS - RAILWAY STATIONS





## CAPEL-LE-FERNE VILLAGE HALL MANAGEMENT COMMITTEE

Registered Charity Number 281.786.

**PROVIDING SERVICES FOR OUR COMMUNITY**

All this information and more can be found on our website [www.capel-le-ferne.org](http://www.capel-le-ferne.org)

Please help us keep this up to date by contacting our Webmaster

Committee Meetings are held at the Village Hall on the First Tuesday of every month at 7.30pm.

**A REPRESENTATIVE FROM ALL HALL CLUBS AND USERS, IS REQUESTED TO ATTEND THE ANNUAL GENERAL MEETING WILL BE HELD ON TUESDAY, 26<sup>th</sup> NOVEMBER 2013**

### RECYCLING

**INSIDE THE HALL** Boxes are provided for:- Unwanted shoes for charity, Used Stamps for Moorfields Eye Hospital & Hearing Dogs. **PLEASE DO NOT LEAVE Plastic Lids/Bottle Tops** – we have unfortunately lost our contact for collection. We will inform you via the Grapevine, if and when we re-commence.

### CONTINUOUS EVENTS

**Quiz Sheets:** Available (£1 per sheet) at the Farmers Market or from Cherry Leppard, 29 Albany Road, first prize £25. The answers are placed in the Grapevine and on the Website.

**100+ Club:** £12 per year your number is placed in a draw, every month for 1<sup>st</sup> Prize £25, 2<sup>nd</sup> £15, 3<sup>rd</sup> £5. These DOUBLE in December! The draw will take place at the Committee Meeting on the 1<sup>st</sup> Tuesday of each month. Contact Wendy 259120 for further information

**Farmers Market:** Tuesdays 10 a.m. to 12.30 p.m. Approximately 20 stalls selling local produce every week.

### FUND RAISING EVENTS

**INDOOR BOOT FAIRS** 8 a.m. to Noon

31<sup>st</sup> March, 27<sup>th</sup> October, 1<sup>st</sup> December 2013,  
26<sup>th</sup> January, 23<sup>rd</sup> February, 30<sup>th</sup> March 2014.

Tel: Wendy 01303 259120 for more information.

**CHICORY TIP** 27<sup>th</sup> April 2013

**GARAGE SALE SAFARI** – 1<sup>st</sup> September

**CHRISTMAS CRAFT FAIR** – 2<sup>nd</sup> November

### 100 CLUB WINNERS – March

1<sup>st</sup> - 51 Karen Leslie

2<sup>nd</sup> - 129 Jerry Watson

3<sup>rd</sup> - 135 Janet Curtis

## BOOK SALE

Plus Jigsaws Videos DVD's & Audio Books

**SUNDAY**  
**14th APRIL**

**10.30 a.m. to 12 noon**  
**VILLAGE HALL**  
**LANCASTER AVENUE**  
**CAPEL-LE-FERNE**  
**FOLKESTONE**  
**CT18 7LX**



## a 60's evening with CHICORY TIP

**Saturday**  
**27th April**  
**at 7.30 p.m.**

**Capel-le-Ferne Village Hall**



Tickets £8  
from 29 Albany Road,  
Capel-le-Ferne  
Bring your own food & drink  
Raffle



## CAPEL-LE-FERNE GARAGE SALE SAFARI

**(100 GARAGES BOOKED LAST YEAR!!)**  
**SUNDAY 1st SEPTEMBER**

**10 A.M. TO 4 P.M.**

Buy your 'MAP' for 50p from the Village Hall, Lancaster Avenue to find all the Garage Sales taking part.

**A BOOT FAIR WITH A DIFFERENCE!**

**Refreshments available at Village Hall & Church Hall**

Tel: 01303 255114 or visit our website for further information

[www.capel-le-ferne.org](http://www.capel-le-ferne.org)

## CAPEL-LE-FERNE VILLAGE HALL MANAGEMENT COMMITTEE

Registered Charity Number 281.786

## CHRISTMAS CRAFT FAIR

**SATURDAY**  
**2nd NOVEMBER**  
**10 A.M. TO 3.00 P.M.**

**large variety of stalls**  
**a chance to buy locally produced christmas presents**

**Tombola \* Refreshments**

**Admission:**  
By Donation to Village Hall  
Tel: 01303 258865 for further details if required.

[www.capel-le-ferne.org](http://www.capel-le-ferne.org)



### A SPECIAL DATE FOR YOUR DIARY

Capel-le-Ferne Farmers Market celebrates their **10<sup>th</sup> Anniversary on Tuesday 23<sup>rd</sup> April 2013**. As it happens to be St. Georges Day also, we will be celebrating in Red and White. Do come along and join in the fun. The Battle of Britain Memorial Trust will be attending, as being part of our community, as well as some of the Capel-le-Ferne Primary Schoolchildren in fancy dress. A Guest Celebrity will officially open the market and the Chairman of the Kent Farmers Market Association will also be attending and presenting a Certificate for our achievements. A free Draw Ticket will be given to every Customer for a chance to win a voucher to spend at the market. Other plans are still being made for a few extra surprises too! Our regular stalls will be attending with their Local produce – which include meat, fish, vegetables, fruit, eggs, delicatessen, bread, cakes, pastries, olives, preserves, jams, pickles, local honey, European, South African & Italian cuisine, smoked fish, cheese & meat, confectionary, ice cream, plants & pet food, jewellery, painted glass & photo cards. In addition, an on-site photographer for portraits and passports etc!

See our Facebook page or visit our website [www.capel-le-ferne.org](http://www.capel-le-ferne.org) for further information.

# The Valiant Sailor

New Dover Road – Tel 01303 252401 [www.valiantsailor.com](http://www.valiantsailor.com)



Food served 7 days a week. Open daily from 12:00 hours.

## Easter Sunday – 31 March

**Lunch - Pre-booking advisable. Easter Egg Hunt and chocolates for the kids**

**Real Ales, Fresh Fish** including *catch of the day* delivered daily. Our 34 cover separate restaurant serves a range of freshly prepared meals using **locally sourced produce** along with an excellent Roast every Sunday. Good selection of wines available. All diets i.e. gluten-free catered for on request.

**Networking Breakfasts**, Office/Private Parties, Walkers, Runners, Groups, Wedding Anniversaries, Birthdays, Wakes and Bar/Batmitzvahs catered for. Large **car-park** and safe **Children's play area**.

### Forthcoming events

Wed 20 Mar: Open Mike night – 8pm. Sun 24 Mar: Live Music - Cultured Pearl – 2pm.

Tue 26 Mar: Tune Session – 8.00pm. Wed 27 Mar: Quiz Night – 8pm.

Sat 30 Mar: Live Music - Brad Pittance & the Pirates – 8.30pm. Sun 31 Mar: Live Music - Great Mates – 8.30pm.

Sat 06 Apr: Watch The Grand National- Live 4.00pm. Sat 06 Apr: Live Music - Marty Russell – 8.30pm.

Fri 12 Apr: Over 40's Singles night – 8.00pm. Sat 13 Apr: Karaoke with Zoeoke – 8.00pm.

Wed 17 Apr: Open Mike night – 8.00pm. Sat 20 Apr: Live Music - Electric Monks – 8.30pm. Sun 21 Apr: Live Music - Cultured Pearl – 2.00pm. Wed 24 Apr: Quiz night – 8.00pm. Tue 30 Apr: Tune Session – 8.00pm.

**Management and Staff look forward to meeting you.**

### COLOURS ANSWERS - THANK YOU FOR YOUR SUPPORT

*This quiz is run by The Chapel Le Ferne Village Hall Management Committee, Registered Charity No 281786*

1.	Red	13	Green	26	Brunette	38	Khaki
2	Orange	14	Amber	27	Terracotta	39	Blonde
3	Blue	15	Tan	28	Fawn	40	Magenta
4	Azure	16	Teal	29	Brown	41	Auburn
5	Turquoise	17	Sienna	30	Slate	42	Royal Blue
6	Yellow	18	Pink	31	Coffee	43	Imperial Blue
7	Purple	19	Plum	32	Scarlet	44	Crimson
8	Violet	20	Primrose	33	Ginger	45	Cyan
9	Grey	21	Lemon	34	Navy Blue	46	Olive
10	Charcoal	22	Moss Green	35	Denim	47	Indigo
11	Black	23	Lavender	36	Burgundy	48	Ivory
12	Chestnut	24	White	37	Cerise	49	Maroon
		25	Cream			50	Ochre

**ARCHERS DECORATING**

Established 25 years

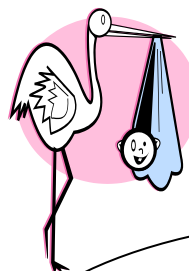
For all your home decorating needs

Check out my feedback on [www.check-a-trade.com](http://www.check-a-trade.com)

For a quote at a time that suits you, call or email me on;

01303 627 021 / 07901 767 925

Email: [archers\\_decorating@yahoo.co.uk](mailto:archers_decorating@yahoo.co.uk)



### CONGRATULATIONS

**& BEST WISHES** to Chantal Blythe (Community Warden) on the birth of her baby boy Max. Born on Monday, 11<sup>th</sup> March and weighing in at 6.6 lbs.

The Editor of "The Grapevine Newsletter" would like to remind everyone that the deadline dates for submitting inserts is printed on the back page. Unfortunately, it is not always possible to remind all regular advertisers. Thank you for your consideration in keeping to these dates.



**CAPEL BAPTIST CHURCH**  
**Capel Street. Services 10.30am.**  
**Speakers for APRIL 2013**

7<sup>th</sup> Gloria Guest (Communion)  
 14<sup>th</sup> Rev Ruddle  
 21<sup>st</sup> Pam Barr  
 28<sup>th</sup> David Foreman

**ALL WELCOME TO THESE ACTIVITIES**  
*If there are queries regarding these details,  
 please call 01303 251086. Gill Cooper*

*Please! A reminder that the public are requested not to park in front  
 of the gates on Sunday mornings as this is a disabled access.*

**Pro Services – Paul Relf Optimum Services**

4 Queen's Lea, West Hougham, CT15 7BJ.

**Tel: 01304 214166. Mobile: 07787 910961**

Garden & Property Maintenance Services &  
 Handyman

**No Job too small**

Projects and all types of jobs you need doing in your garden,  
 or inside and outside your home.

I'm friendly, reliable, local and trustworthy.

If you would like to enquire about any job, without obligation,  
 it will be nice to hear from you.



**Capel-le-Ferne**  
**Gardeners'**  
**Association**

**Capel Gardeners Spring Show will be held at  
 Village Hall on Saturday 6<sup>th</sup> April.  
 Doors open 2.30pm.**

**The annual plant sale will take place at  
 St Radigunds on 4<sup>th</sup> May from 10 am**

**Any enquiries about membership or activities  
 call - Mr Gess Harman on 01303-255661.**

**Insideout cleaning and Maintenance**

*Carpet and upholstery cleaning*

*Window Cleaning*

*Cleaning of debris and leaves from gutters*

*Mould removal from conservatory's, fascia and  
 gutters. Oven Cleaning*

**3 CARPETS CLEANED FOR THE PRICE OF 2**

<http://www.cleaning-insideout.co.uk/>

Call for a free quotation **10% discount**  
 01303 250392 or 07842624786 **for OAP's**



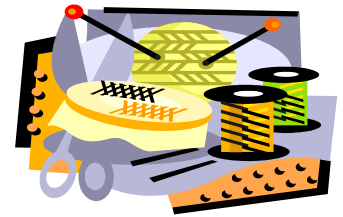
**A warm welcome awaits you at  
 CAPEL BAPTIST CHURCH  
 Capel Coffee Corner every  
 Wednesday  
 10.00am – 12.00noon**

Crafting first Friday of  
 the month

19.00hrs – 21.00hrs

And

**SUNDAY WORSHIP  
 EVERY SUNDAY AT  
 10.30am**



**ALL ARE WELCOME**

**A S Maintenance**

**Local Handyman Services**



**Painting & Decorating**

**Plumbing**

**General Household Maintenance**

**Tel: 01303 884942**

**Mobile: 07505 134 732**

**Email: andy@as-maintenance.co.uk**

**HOME TUTORING AND CLASSES**

All ages, all levels welcome.

Come on your own or join a group

**LEARN A LANGUAGE:** French, Spanish, Italian or  
 German. Also - English for foreign students.

**MATHS** (Numeracy), **ENGLISH** (literacy), age 6 – 18 yrs.

**HELP** with the **KENT TEST** (11 Plus): Verbal  
 Reasoning, Non-verbal Reasoning and Maths.

I am a fully qualified teacher with many years of  
 experience and a high success rate (97%).

**For more information please phone: 01303 226924**

**FOR SALE**

**KENWOOD BLENDER NEW – NEVER USED  
 £12.00 o.n.o.**

**&**

**ELECTRIC PLATE HEATER (ROOM FOR 6  
 PLATES), 3 SERVING DISHES INCLUDED**

**£10.00 o.n.o.**

**Tel: 01303 257703**

## CAPEL-LE-FERNE PARISH COUNCIL

### Summary of some items discussed at meeting on Tuesday, 19<sup>th</sup> March.

- The meeting received 2 requests to address the Council: Firstly, Director of a Regeneration and Town Planning Services Company gave a presentation on his client's suggestions regarding land off Cauldham Lane. Parish Councillors' concerns were expressed to the representative on development of the land, together with access problems to the site and it was specified, that any planning application sought would require deliverance to Dover District Council in the first instance. Secondly, resident addressed the Council requesting:
  - 1) Lack of information printed in the Grapevine newsletter on crime - resident was informed that the Parish Council and Grapevine Editor are not always privy to some information, owing to on-going Police investigations, but would endeavour to try and make residents aware of incidents that occur via reports from the Police Community Support Officer and Community Warden.
  - 2) Classification requested on meaning of the status of the village now as "a Local Centre". District Councillor Scales responded that one of the first aspirations of the Parish Council to the Local Development Framework and the Core Strategy in 2008-2010, was to go for a "little growth" and have some aims and hopes that it would enable the village to preserve/acquire additional facilities, i.e. post office, doctor's surgery, chemist facilities, enhanced bus services, etc.
- Work to remove further hedgerow and trees on the Playing Field would be undertaken within the week, in connection with the Community Recreation Project and progression to advance the venture. This was in view of requests received from residents to change the situ of the Project site and to comply with Dover District Council's Planning Application Approval that a clear view of the gym and skate park area was necessary from a "safety aspect". The work would be undertaken by some residents who had kindly volunteered their services and the Parish Council expressed their thanks accordingly to them, also to Frederick Scales and especially Lynn and Colin Brisley. Debris disposal is being organised and will be carried out following removal. (*Thanks to Capel Groundworks and Hope Farm*). Councillors were informed that planting replacement trees would form part of the Project in due course. (*See more page 7*).
- A better way of communicating with parishioners was discussed and resulted in an immediate decision to allow an agenda item at each monthly meeting of a 10-15 minutes time slot for residents to address the Council, with prior notification to the Parish Clerk of intentions and statement of reason. A sub-committee of Councillors would pursue this issue to make further improvements on interaction. The agenda for each meeting is available on the Parish Council website, one week prior to a meeting: <http://www.capel-le-fernepc.kentparishes.gov.uk>
- Folkestone Air Show on Saturday, 8<sup>th</sup> June (see separate advert on insert) – The Battle of Britain Memorial Trust will this year be involved in this event, as the turning point for all aircraft taking part, is being extended further along the cliff-top at Capel, to take in the area (out at sea) adjacent to the Battle of Britain site. The Parish Council were asked to help organise some events on the day and would welcome any assistance on this from residents and/or organisations that would like to be involved. The Farmers' Market has already intimated their intention to join in on the day. The Councillors look forward to hearing from anyone interested.
- A celebration day was being considered to commemorate the Queen's Coronation (date still to be agreed). This would be held in conjunction with the official un-veiling of "The Fields in Trust" plaque that was presented to the Parish Council last year on achieving QE II status for the Playing Field. The plaque will be situated on a stone plinth on the Playing Field boundary at Lancaster Avenue.
- A Neighbourhood Watch Scheme was something the Parish Councillors discussed further and were extremely positive and optimistic on reviving. Further details are in a separate insert on the following page (page 7). In the first instance, a meeting has been arranged on Saturday, 11<sup>th</sup> May, 2pm – 4pm, for residents to give their views and/or offer assistance. Other "community services" will be pursued to attend on the day, i.e. Health Authority, Social Services, Fire and Police etc. Free tea and coffee will be available.
- Parking on grass verges is still causing considerable damage in various places, with unsightly consequences. Providing wooden posts to the "Highway Verges" is being considered to areas of concern and investigation on securing funding being sought.
- Highway issues reported to Kent Highways included; transverse cracks to surface on B2011 and missing cats' eyes on B2011 between Courtwood Roundabout and Old Dover Road near the Royal Oak Public House.
- A "pilot scheme" to switch unused street lights off to save money was planned. A report was received following District Councillor Scales' attendance at a recent KCC Joint Transport meeting. The only area in the vicinity of Capel being considered at the present time, which may affect local residents, would be a stretch of road between Maxton and Farthingloe, near Dover. As stated this is a pilot scheme that will probably last for a year, when views will be sought by way of public consultation.

**Next Parish Council meeting is on Tuesday, 16<sup>th</sup> April at 7.30pm in the Village Hall (Small Room).**

**A COPY OF THE MEETING'S AGENDA WILL BE AVAILABLE ON THE PARISH COUNCIL WEBSITE A WEEK BEFORE THE MEETING. <http://www.capel-le-fernepc.kentparishes.gov.uk>**

**ALL PARISH COUNCIL MEETINGS ARE OPEN TO THE PUBLIC, SHOULD YOU WISH TO ATTEND.**

**HOWEVER, SHOULD YOU WISH TO ADDRESS THE COUNCIL,**

**PLEASE INFORM THE CLERK PRIOR TO THE MEETING. THANK YOU**

Further information on any of the above or to contact Parish Council, please write to Parish Clerk, 39 Victoria Road, Capel-le-Ferne.  
Tel: **01303 259564**. Email: [maureen.leppard@btinternet.com](mailto:maureen.leppard@btinternet.com) - Or visit our website [www.capel-le-fernepc.kentparishes.gov.uk](http://www.capel-le-fernepc.kentparishes.gov.uk)

### Dover District Council

#### Advertising Planning Applications

As of 1st April 2013 relevant planning applications will now ONLY be advertised in the Kent on Sunday. You can, however, view the weekly lists and register to receive update notifications online via Dover District Council website. Follow Link: <http://www.dover.gov.uk/Planning/Planning-Applications/Advertising-Planning-Applications.aspx>

- [Weekly Planning Lists](#)
- [Register to receive update notifications](#)

**To report any concerns you have call  
Trading Standards Advice and Education,  
Telephone 08454 040506.**

**Email [tsadvice@kent.gov.uk](mailto:tsadvice@kent.gov.uk).**

**[www.tradingstandards.gov.uk/kent](http://www.tradingstandards.gov.uk/kent)**

***If you would welcome notification of the Trading Standards alerts received by the Parish Council, please send your email address and confirmation to [maureen.leppard@btinternet.com](mailto:maureen.leppard@btinternet.com). You will then be entered into the Parish Clerk's database and they will be forwarded as and when received.***

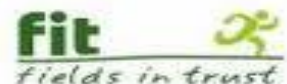
## Capel Outdoor Recreational Facilities Update Olympic & Jubilee Legacy



### YIPPEE - FIRST STAGE UNDERWAY!

Many of you may have noticed several volunteers hard at work removing the brambles, weeds and trees between the two sections of the field to make way for the recreational facilities. A HUGE thank you to Julian, Sarah & Max Peglar, Colin Brisley, Sam Drake, Josh, Max & Louise Walters, Mick Marshall, Frederick Scales, Jenny & John Carter, Angela Parkes and our 'tea lady' Georgia Brisley who gave up their Saturday and faced the bitterly cold snow & wind to get this stage of the project completed. Thank you also to Capel Groundworks and Hope Farm who have kindly offered to recycle the tree tops/twigs etc without cost, and to those villagers who took the logs away for domestic fire use. Great care has been taken to ensure that all trees removed will be replaced within the vicinity of the fields – all kindly donated by The Outdoor Gym Company who operate a forest protection policy.

The order for the Outdoor Gym has been placed and work on the access paths will commence shortly. Applications have been submitted for the funds to provide the skate park, zip wire and petanque court – it is a long process, so please keep your fingers crossed!



*Chantal Blythe*

Community Warden (on maternity leave)

*Lynn Brisley*

DDC Community Development Officer



**“Whilst levels of crime in Capel are lower than the national average some does occur - there have already been a couple of burglaries in the village”!**



Capel is well known for its community spirit and as residents we are proud of it. There used to be a Neighbourhood Watch System and we would like to revitalise that to supplement that camaraderie.

**There is a lot we could do together – different things may matter to different streets and**

**Neighbourhood Watch will adapt to each area. Examples of what may count:**

Strangers in the vicinity? Keep an eye on them - if you think they are acting suspiciously there could be a robbery in progress. Phone 101 and report the situation with description of stranger(s). If there is a car nearby, take the make, model colour and registration number. The police will need your particulars and will give you an incident's number. If there is no doubt a crime is being committed, ring 999 and do exactly the same.

Dog fouling: A heinous crime for those who have adopted a large portion on their shoes and walked it into the house. It is worse for those who are visually challenged or in a wheelchair. Most dog owners are sensible and carry out the distasteful task of picking up after their dogs but alas there is always one who has to be different and inconsiderate to the rest of us. I do believe there is a considerable fine that can be imposed on such perpetrators – to bring these people to justice needs firm evidence, such as CCTV, video footage or at least two who have observed the laziness of the owner.

**So how can you help Neighbourhood Watch?**

**Either come to a meeting to talk about what matters to your street and/or Volunteer to help or, keep your eyes open and know the numbers to ring 101 for police, 01303 259564 for the Parish Clerk.**



**There will be a meeting to “hear your views” on Saturday, 11<sup>th</sup> May at Capel Village Hall, Lancaster Avenue, (Main Hall), from 2pm to 4pm.**

**Free tea and coffee**



**The Lighthouse Inn 111 Old Dover Road CT18 7HT**

[info@thelighthouse-inn.co.uk](mailto:info@thelighthouse-inn.co.uk) [www.thelighthouse-inn.co.uk](http://www.thelighthouse-inn.co.uk) 01303 254080



**Channel Views, Alfresco Dining, Teas, Coffees, English and Oriental Cuisine, Breakfasts, Sunday Roasts with our resident Pianist, En Suite Rooms, Function Room for Weddings Birthdays etc Dogs Welcome**  
**HAPPY EASTER**



**Open All Hours from March 22<sup>nd</sup> Back to Normal!**  
**Easter Sunday Children under 10 Eat Free**

**Open for Breakfasts Coffee Cream Teas Pub Grub**  
**Open Bank Holiday Monday All Day!**

**SATURDAY APRIL 27<sup>th</sup> All Day Music Free Entry**  
**SAM WOODHAMS SWING 1pm GARY DEAN AND BAND 6.30pm**  
**FAMILY FUND RAISING DAY FOR DOVER RNLI WITH KENT RADIO'S DJ**  
**STEVE LADNER Midday SAT MAY 25<sup>TH</sup> Free Entry**

**MIDSUMMER OPERA GALA EVENING Saturday June 22<sup>nd</sup>**  
**Italian Tenor GUGLIEMO CALLEGARI Mezzo Soprano JENNIFER BRISK**  
**5.30 Champagne and Canapes on the Terrace Overlooking the Channel followed by 3 course meal**  
**Tickets £55 per head BOOK EARLY TO AVOID DISAPPOINTMENT !**



**Royal Academy of Dance  
Ballet Lessons  
Age 5 years to 16 years**

**At the St Radigunds Church Hall  
Capel-Le-Ferne.**

**Starting on Thursday, 18<sup>th</sup> April  
Lessons will be every Thursday  
Between 3.30pm and 6pm**



**To book lessons Telephone 0796 415 6004  
Or Email [Claire.chown@hotmail.co.uk](mailto:Claire.chown@hotmail.co.uk)**

**£4.00 for a 45 minute lesson  
Qualified RAD Teacher**



### **MARATHON RAFFLE**

My name is Martin Wood and you may have seen me round the village and surrounding lanes in training for my first marathon - I'm usually accompanied by my sadistic coach, Mick Marshall!

I am running in the Brighton Marathon on April 14<sup>th</sup> and have already started raising money for the Pilgrim's Hospices as well as a hospice in Northampton that did so much for my Dad in his final days.



You can visit my Just Giving pages if you would like to sponsor me:

<http://www.justgiving.com/teams/martinwood>

or I will be running a raffle at the Farmer's Market in the couple of weeks leading up to the marathon and it would be great if you could buy a ticket or two.

Very many thanks in advance.

## **Remember Them**

(Proprietor: Mrs Anne Cox)

Independent Provider  
of Bespoke Orders of Service  
for the Funeral  
of your loved one.



Enquiries: 01304 823456 and/or  
e-mail: [rememberthem2011@gmail.com](mailto:rememberthem2011@gmail.com)



### **Judo I.B.F. Club ET.1978**



**Capel le Ferne Village Hall - Every Wednesday**  
**Juniors (6-9 years) 5.30pm-6.30pm**

**Seniors (10 years +) 6.30pm-8.00pm**

**Senior Coach: Colin Carrott 3<sup>rd</sup> Dan Tel: 01303 258942**

**Technical Advisor: Colin Ogburn 3<sup>rd</sup> Dan**

**Tel: 07870 822 510. New Members Very Welcome**  
**Up to 5 Qualified, Insured Instructors & Coaches to give expert tuition.**

**Come & try this DYNAMIC MARTIAL ART**



# FARMERS MARKET NEWS - FIND US ON FACEBOOK!

## THE TASTE OF KENT AWARDS 2013 Unfortunately we didn't win, maybe next year!

### After all WE know we're the best! Our thanks go to everyone who voted for us.

It was unfortunate that for the very first time in nearly 10 years, we had to cancel the market on 12<sup>th</sup> March due to the adverse weather conditions. We did attend for a short time with just 2 stallholders (who actually live in Capel)! Approximately 30 customers braved the cold. We were back to normal on the 19<sup>th</sup> with a full complement of stalls and a real buzz! We also welcomed back Heathmore Jewellery after a long absence due to illness and Pressies Galore, Glassware. Also a welcome return to Damali's Italian cuisine, do come along and give them a try.

The Easter Special was held on 26<sup>th</sup> March, with stallholders, organisers & helpers in Easter Bonnets, a 'Find the Easter Egg' competition for the children, and a Spring Flower Decoration Competition for the adults.

We are in the process of organising our 10<sup>th</sup> Anniversary Event now, which will be held on 23<sup>rd</sup> April – St. Georges Day, several surprises in store!

We have also been asked to attend the "Shepway Airshow Event" at the Battle of Britain Memorial on 8<sup>th</sup> June, when we hope some of our stallholders will be able to attend.

A Newsletter is sent out to many interested parties, and is also added to our FACEBOOK page.

If you would like a copy, please e mail [capelfarmersmarket@yahoo.co.uk](mailto:capelfarmersmarket@yahoo.co.uk).

We are still looking for help with setting up and clearing away, on a rota basis.

If you feel you could help us in this way, please contact Jenny or Cherry. 01303 250928 / 01303 255114.

Please note: The products for sale are produced (in the majority of cases) by the stallholder, in Kent, unless clearly marked otherwise.

Our present products are:- Fish, Meat, Eggs, Preserves, Jams, Honey & Pickles, Delicatessen, Smoked Fish, Meat & Cheese, European, South African & Italian dishes, Bread, Cakes & Pastries, Olives, Vegetables, Fruit, Sweets, Ice cream, Fruit Liqueurs, Pet Food, Plants and a few Crafts. We are thrilled that James Taylor Photography has returned, after a very long illness, with his portable studio for portraits, passport, driving-licence photos etc. - printing your holiday snaps etc. in the small hall.

We should point out that we ensure our producers hold the relevant certificates i.e. a public liability insurance and, where necessary, health and hygiene certificate and kitchen registration documents.



## CAPEL-LE-FERNE Youth Club



Every 1<sup>st</sup> and 3<sup>rd</sup> Thursday in the month from 7.30pm to 9.30pm.

Please come along and your first evening is free!

**Please ensure you collect your children from the hall, not the Car Park, even on light evenings.**

We are still looking for additional helpers.

Any help will be gratefully received. Please see one of the Youth Club helpers for more details.

Any issues/queries

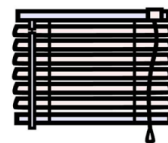
Please contact the Chairperson.

Simon on 07860803767 and find us on Facebook to keep up to date with all info about Capel Youth Club.



## **FITTING CREATIONS**

### **BLINDS – CURTAINS – SHUTTERS**



**Friendly Family Business**  
**Local to you**

**01303 894882**

**07506 144427**

[www.fittingcreations.com](http://www.fittingcreations.com)  
[info@fittingcreations.com](mailto:info@fittingcreations.com)

## **PLASTERING**

### **Fully Insured**

**All Aspects of Domestic Plastering,  
Drylining, Coving & Rendering  
Tidy, Friendly & Reliable.**

**For a free quote contact:  
Luke Holness**

**Mob: 07570 782216**

**Tel: 01303 255679**

★★★★★

[WWW.SHEPWAYDRIVINGSCHOOL.COM](http://WWW.SHEPWAYDRIVINGSCHOOL.COM)

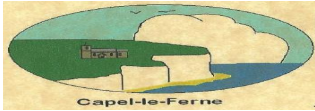
**07772 775564**

HYTHE, FOLKESTONE, DOVER  
& ALL SURROUNDING AREAS

**SPECIAL INTRODUCTORY OFFER**  
**£80 FIRST 5HRS\***  
\*NORMAL RATE ONLY £21 PER HOUR



### Neighbourhood Watch what can you get out of it?



There is a great deal neighbourhood watch can offer!

For starters there's; Peace of mind,  
Community and a sense of caring,  
Possible reduced household insurance

For those working during the day or new to the village  
there is a chance to meet more fellow residents.

**There will be a meeting to "hear your views" on  
Saturday, 11<sup>th</sup> May at Capel Village Hall, Lancaster  
Avenue, (Main Hall), from 2pm to 4pm.**

Free tea and coffee

### **Capel le Ferne Evening Women's Institute**

Meetings are held in the Village Hall, starting at 7.30pm.

Visitors are welcome and may attend up to 3 meetings  
without becoming members.

#### **More information from Jayne Stone 211480**

9th April

WI Meeting Susan Filby The power of Music

14th May

WI Meeting Sarah Wheeler - Makatono

11th June

WI Meeting Tsuyoko Page - Origami

9th June

WI Meeting Veronica Ashby - Dungeness to Diamonds

13th August

WI Meeting Gehad Homsey - Mercy Ships

10th September

WI Meeting Judi Knight - Wartime fashions

8th October

WI Meeting - Mr D Wilks - Ecuador, Amazonia to the Andes

## **CAPEL EVENING W.I.**

If you think the Capel Evening WI is Jam and Jerusalem then read on. A few hardy members would have been able to brave the elements to get to the March WI meeting but in deference to the risk to limbs for some we decided to postpone March meeting. So instead of a report of our main meeting I thought that you might like to read a brief insight into Capel's WI. The story began over 50 years ago when several like-minded ladies in the village decided to get together. Since then, the WI has adapted and added new and various activities! Today we have one of the busiest WIs' around and with the variety of additional activities, some during the day and others in the evening we have at times much difficulty fitting everything in.

**Book Share Club:** Thanks to Shirley and the mobile library we read a succession of books whose authors range from well-loved through to award winning new arrivals that appear each month, (including that naughty book that everyone talks about. So we are not as prim and proper as some would say we are). Conversation flows as opinions are shared. Favourite books and authors are shared over a cup of tea and a biscuit or piece of homemade cake. **Craft:** Much more than a knit and a natter - our crafty ladies meet fortnightly to chat while practising their arts. Techniques shared, bibles and bobs are found to complete a new creation. **Darts:** The Darts ladies meet weekly and take part in the WI Tournament as well as the occasional friendly against other WI teams. Usually an evening activity but during the colder winter months sometimes the arrows can be seen flying on the odd afternoon. **Home Economics:** This is not as boring as it may sound and there is often various interesting speakers and demonstrations. They meet on an afternoon once a month and exchange lots of ideas with each other. Each year the ladies enter for the prestigious East Kent 'Home Economics' cup and they were delighted when they won it last November. **Drama:** there is much dramatic talent among our members who will script, produce and perform play-lets for our entertainment and for those who are shy and do not like performing, there is always help needed behind the scenes. Neat observations on life are always well received. **Luncheon Club:** Our newest venture is a sociable get together each month and is usually in one of the local hostleries where good food is served. It has become so popular that sometimes we have to have a waiting list. **Scrabble:** A fortnightly treat for those who enjoy words, fun and not too cut throat - there are usually 3 tables on the go during an afternoon session.

There are many other activities during the year apart from our usual monthly meetings, where you can enjoy a varied mixture of speakers and demonstrators. Our linked Institute will come to visit us in June when we will give them a sit down meal. All the ladies talents come to fruition as everything is homemade for everyone to enjoy. There will be an Afternoon Tea Party in July as part of our Fundraising for this year. A course in Mosaics is being organised for those who wish to experiment in this technique.

Joining the WI is a great way to make new friends particularly those who are new to Capel. I should know as I used to be one of those and without joining the WI, I would still be at home twiddling my thumbs.

The monthly programme is published in the Grapevine and any lady in the village is welcome to come to a meeting and see if the WI is for you. So do not be shy because once you come to your first meeting, you will wonder why you never came before.

**Contact : Jan Ardley who is our Hon Secretary – 01303 892791**



## **CAPEL ACTIVE RETIREMENT ASSOCIATION**

We are approaching our very first AGM in May which reminds us how far we have come since the Inauguration last April. Our numbers have gradually been increasing as word gets around, and for our first year we're pleased with the way things have taken off. Members have been feeling their way as to what they want from the Association, as well as being involved in other aspects of Village life. We are encouraged by their ideas and hope to shape the next year or so in response. Last month we listed the various activities for 2013 and these can also be found on our website: [www.capelara.co.uk](http://www.capelara.co.uk) or you may contact the Secretary on 01303 250144. Do give us a try – you'd be warmly welcomed.

USEFUL CONTACTS INCLUDING ACTIVITIES & CLUBS	CONTACT NAMES	TELEPHONE NUMBER
Community Warden	Mr Dave Bish	07811271020
Parish Council Chairman	Mr Clive Goble	01303 240566
Parish Council Clerk	Mrs Maureen Leppard	01303 259564
Webmaster	Mr Peter Jones	01303 248149
Chairman, V. H. Committee	Mrs Jayne Stone	01303 211480
Vice Chairman “	Mr Jerry Watson	01303 258865
Secretary “	Mrs Cherry Leppard	01303 255114
Treasurer “	Mrs Jenny Carter	01303 250928
Lettings Secretary “	Mrs Joan Woodsford	01303 252354
Minutes Secretary “	Mr Gerry McCann	01303 850332
Maintenance “	Mr Derek Jeffrey	01303 259842
Trustee “	Mrs Jenny Barraclough	01303 245399
Trustee “	Mrs Julie Young	01303 259734
Trustee “	Mr Mike Stone	01303 211480
Trustees “	Mrs Sue McCann	01303 850332
Trustee “	Mrs Pim Scales	01303 254464
100+ Club	Mrs Wendy Leeming	01303 259120
Farmers Market	Jenny & Cherry	245399/ 255114
Boot Fairs	Mrs Wendy Leeming	01303 259120
Village Hall Quiz Sheets	Jenny & Cherry	245399 / 255114
Table & Chair Hire	Mrs Jayne Stone	01303 211480
Noticeboard (£1 per month)	Committee Members	
Divas Dance	Miss Rebecca Uden	01303 893650
Brownies	Mrs Sandra Sharpe	01303 241767
Guides	Miss Rachel Chandler	01303 210702
Youth Club	Mr Simon Withey	07860803767
Playgroup	Mrs Alison Cloake	07977 838609
Judo	Mr Colin Carrot	09850 548769
Capel Active Retirement Association	Mrs Sally Solly	01303 250144
Short Mat Bowls	Mrs Ros Chandler	01303 255862
W.I.	Mrs Vad Blake	01303 241399
Fit Friends - Pilates	Mrs Pam Vivien	01303 244322
Keep Fit	Mrs Karolin Taylor	01303 246887
Zumba Fitness	Tuesday & Thursday 6pm.	07411966582
Capel Ramblers	Mr Bob Mothersele	01303 250931
Gardeners Association	Mr Gerald Harman	01303 255661
Bridge (Sunday & Tuesday)	Adrian & Judy	01303 245521
Bridge (Fridays)	Mr Bob Jones	01233 756362
Capel Art Group, St. Radigunds Church	Mrs Susan Dootson	01303 243508
Remote Control Car Club	Mr Derek Jeffrey	01303 259842
St. Radigunds Players & Choir	Mr Colin Blake	01303 241399
Twinning Association	Mrs Jayne Stone	01303 211480
St. Radigunds Church	Rev. Brian Williams	01303 243784
St. Radigunds Church Hall Bookings	Steve Lennard	01303 670445
Capel Baptist Church	Mrs Gill Cooper	01303 251086
Welcome to Village Letter	Mrs Debbie Catling	01303 251525
Dog Walkers	Mrs Pam Sheppard	01303 243832 (eve)

Please let me know if I've left anyone/anything out!  
Or if any details are Jenny 01303 245399



### Capel-le-Ferne Playgroup

The Village Hall, Lancaster Avenue,  
Capel-le-Ferne, CT18 7LX  
capelpreschool@btinternet.com

Running for over 40 years

Ring Alison on 07977838609 or drop in during one of our sessions.

A few vacancies available

\*\*\*\*\* Ofsted 2010 - Outstanding environment and good in all other areas. \*\*\*\*\*

\*\*\*\*\*

Open Term Time - mornings Monday, Wednesday, Thursday and Friday.

## Capel Chimney Sweep Services

**No dust, mess or fuss!**

Fully Insured service for  
all your chimney needs.

Complete service, sweep and vac.

**Telephone Dave**

**on:**

**07896 282093 or**

**01303 231313**

Institute of Chimney Sweeps Certificate  
(ICS) qualified. Chimney safety  
certificates issued for compliance with  
your home insurance.



### CAPEL-LE-FERNE WEBSITE

[www.capel-le-ferne.org](http://www.capel-le-ferne.org)

Please could all Clubs & Societies in the Village, regardless of where and when they meet, send regular updates plus contact information to our Webmaster. Also all forthcoming events, in fact any information of interest in the village, i.e. local events, history, local celebrities, family searches etc. The website is proving very popular, receiving many enquiries. Current information is important and it cannot be updated without your help. It is a mine of information, especially for anyone new to the village. All event posters are placed on there to be downloaded by anyone wishing to display one. If you have ANY photographs of Capel, your club, events, history, the area etc. please forward them for inclusion in the Gallery of Images. Contact Peter at:

28 Helena Road, Tel: 01303 248149 Email:  
webmaster@capel-le-ferne.org



**Mobile  
Library  
Every  
Tuesday**



Old Dover Road 10.25am - 10.40am  
Victoria Road 10.50am - 11.20am  
Reece Adams House 11.25am - 11.55am  
Village Hall 12.00 noon - 12.30pm

### Simpson Aerials

Your local aerial installer

We install, repair and tune all TV and  
Radio Aerials and Satellite, including  
Freeview, Freeview Plus, Freesat and  
Freesat plus. Est: 1988



**Call Peter on**



**01303 250360 or 07971807150**





**Computer Problems Solved**  
Tel: 01303 241325 Mob: 0796 8129 902  
Usual Fee **£35**  
\*PCs, Laptops, Tablets setup with Internet, Email, Security & Office Programs – Ring for new PC prices  
\*PC / Laptop upgrades and repairs  
\*Business Web sites built & hosted from £10 pm  
\*Tuition available by a qualified tutor  
Ring Tony for a fast and friendly service  
See [www.kimcomputers.co.uk](http://www.kimcomputers.co.uk) for details

[www.villageyak.co.uk](http://www.villageyak.co.uk)

**Roger Crowther**  
rwcrowther@btinternet.com  
**Experienced and fully qualified Handyman**  
For free estimate tel.  
**01304 822649**  
**07543 852682**  
All jobs, large or small.  
5% discount for OAPs.  
References available.



**Carpentry, painting & decorating, tiling, misc. electrical and plumbing works, garden structures, odd jobs and repairs.**

**Absolute Security**  
**LOCKSMITHS**  
Opening hours: Mon-Sat 9am – 6pm  
**No call out charge – 24 hours, 7 days**  
All types of locks, open-supplied-fitted  
Boarding Service - Emergency Repairs.  
Key Cutting. Domestic & Commercial. Shutters,  
Grilles, Bars, Safes. Video/Audio Entry Systems.  
Fitting Service Available.  
**01303 210057 / 07887652507**

**G B Haworth**




**Painter & Decorator**  
**Interior & Exterior**  
**Free Estimates Capel - 244206**

**GRAPEVINE ADVERTISING from 1<sup>st</sup> April 2013**  
**This space could be advertising your commercial/business venture or, non-village organisation event.**  
Size 9cm x 3.5cm £ 9.50      Size 9cm x 7cm £14.50  
Size 9cm x 13cm £20.00. Size 20cm x 13cm £36.00 (½ page)  
**Payment in advance. Cheques payable to**  
**Capel-le-Ferne Parish Council**  
**For further details contact Parish Clerk at 39 Victoria Road,**  
**or Tel: 01303 259564. Email: [maureen.leppard@btinternet.com](mailto:maureen.leppard@btinternet.com)**

## CAPEL VEHICLE SERVICES

All makes of cars serviced and repaired.  
MOT repairs, mechanical and welding.  
Tyres, Exhausts, Batteries & Towbars  
Supplied and fitted  
Competitive rates. No VAT.  
*Friendly efficient service*  
Call John Horne 01303 255894 or email:  
[Johnhorne@amserve.net](mailto:Johnhorne@amserve.net)  
Local free collection and delivery available if required  
MOTs

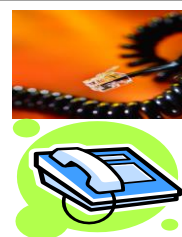



- All types of paving (driveways, patios, pathways)
- Full driveway & dropped kerb packages
- Dropped kerbs
- Bricklaying & retaining walls
- Tarmac & concrete
- All types of groundworks including foundations, drainage, etc

Contact us for a free quote  
T: 01303 253437 M: 07788 146673  
[capelgroundworks@btinternet.com](mailto:capelgroundworks@btinternet.com)  
[www.capelgroundworks.co.uk](http://www.capelgroundworks.co.uk)

### Do you ....

1. Need an extra telephone point in your house?
2. Need to relocate your existing telephone points to a more convenient place?
3. Need network cabling or system installation for your business?



For excellent rates call **JOHN @ j.waller services.**  
Fully qualified ex BT engineer with 12 years experience.  
07766 068100 01304 225420  
[www.j-wallerservices.co.uk](http://www.j-wallerservices.co.uk)  
Half the price of BT OPENREACH ..... GUARANTEED

### Recycling/Waste Collection Dates:

#### Food Waste, Rubbish & Green Waste

**Friday, 5<sup>th</sup> and 19<sup>th</sup> April**

#### Food Waste & Recycling

**Fridays, 12<sup>th</sup> and 26<sup>th</sup> April.**



Items for May issue to be with Maureen Leppard (Editor) at  
39 Victoria Road, Capel-le-Ferne CT18 7LT, (Tel: 01303 259564) or  
Email: [maureen.leppard@btinternet.com](mailto:maureen.leppard@btinternet.com) by 6pm, Sunday, 14<sup>th</sup> April 2013



## **The Folkestone Big Band Appreciation Society**

**FBBAS** meet on the **Third Wednesday of every Month** from **2 - 4 pm in Wards Hotel, Earls Avenue, Folkestone** when a steadily growing number of lovers of Big Band Music meet to appreciate and share their interest in Big Bands. Each session is presented by a volunteer member on a particular Band or mixture of Music that they particularly love. It is not live music but neither is it just playing music as you might do at home for yourself. A lot of research goes into a presentation by a member, which is fascinating and informative both for the presenter and the audience.

There is no lack of volunteers and a full and varied programme of speakers and subjects this year has been in the calendar from January through to August after which other volunteers will come forward.

We have a coffee or drinks from the bar before the session and in the interval, and the only cost is £1 a time which is donated to The Kent Air Ambulance.

Membership has doubled in the past year and we now get between 20 and 30 at a meeting with each of the last three months attendance figures breaking the previous record.

The programme for the next six months is as follows:

17th April - Alan Meek presents "Then, Before and After"

15th May - John Oliver presents 'Ronnie Aldrich and The Squadronaires', and the RAF Squadronaires from the Central Band of the RAF

19th June - Tony Pettit, (subject not yet decided)

17th July - Norman Bennett presents Stan Kenton

21st August - Roger Jeffrey presents "ABC of Swing"

If you enjoy Big Band Music why not come along and give it a try. We are a pretty friendly bunch.

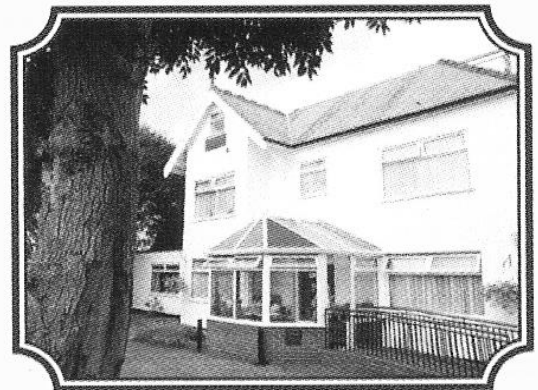
Our Chairman **Tony Pettit phone 01303 252214** would love to hear from you, or just turn up around 1.45pm on a third Wednesday

**John Oliver, FBBAS Publicity Officer**

South East Kent Coastal Clinical Commissioning Group (covering the Dover and Shepway districts) - meetings are open to the public and you are welcome to attend and listen. The next meeting is to be held on 9<sup>th</sup> April 2013 at Dover District Council offices between 3.30pm and 5.30pm. Details of these meetings are on the DDC website.

Jan Perfect, CEO, CASE Kent, Berwick House, 8 Elwick Road, Ashford, Kent TN23 1PF. Tel: 01233 610171  
website: [www.casekent.org.uk](http://www.casekent.org.uk)

## **BRACKNELL HOUSE** **Residential Care Home** **34 Helena Road, Capel-le-Ferne**



**24 Hour Staffed Residential Care**  
**Long Term or Respite Care**  
**Family and Friendly Atmosphere**

**Tel: 01303 254496**

**Or 07904095747**

**Email: [bracknellhouse@btconnect.com](mailto:bracknellhouse@btconnect.com)**



### **Peter the Spaniel, WWII artillery warning dog**

The following interesting WWII anecdote from Alan Knight, now a resident of Halifax, Nova Scotia, but born in Folkestone has been received:

"My father's brother, Harold Knight, and his wife Ruth bought 100 New Dover Road, Capel-le-Ferne, when it was built in the early 1930's. Harold was a plasterer, and had worked on the house when it was under construction. After the fall of France in 1940, civilians were told that they had to leave Capel, as the expected German invasion might soon turn the village into a war zone. Uncle Harold was doing construction work for the army, and Ruth explained to the military that "My husband doesn't know how to boil an egg; he will starve without me to cook for him"!

The military relented, and Ruth was allowed to stay, provided she agreed to have military personnel billeted at 100 New Dover Road. However, before this happened, the Battle of Britain began and Capel had a grandstand view of the air battles over the Channel! Dozens of newspaper reporters converged on Capel, and several of them took up residence at 100 New Dover Road. Each morning at dawn they would walk to the cliff edge, and following a dog fight, run to the telephone box at Capel Street bus stop to file their report to Fleet Street. (Among the journalists at 100 New Dover Road was one Reginald Foster, of the now-defunct "Daily Sketch". He was jailed for contempt of court during the 1960's Vassall Tribunal, for refusing to divulge his sources for a story about the spy John Vassall).

"Once the Battle of Britain ended, the Germans set up huge guns on Cap Gris Nez to bombard shipping in the Dover Strait. The shell casings of these huge artillery rounds used to be on display in Folkestone Museum when I was a child, and perhaps they still are. The Germans would bombard Folkestone and Dover, and sometimes these shells would land around Capel. Ruth and Harold had a black cocker spaniel named Peter, who would sit on the garden wall, looking over the Channel. After the first few shells landed nearby, Ruth noticed that Peter would tense up when he heard a shell being fired from Cap Gris Nez, and would move his head upwards as if he was tracking the artillery shell on its ballistic flight. If Peter stayed on the wall, the shell was not coming close. If on the other hand, Peter jumped off the wall and ran to hide in the basement, Ruth would clang a shell-case which hung on the wall at 100 New Dover Road, to warn everyone to take cover! Pure "Dad's Army"!





### **What is happening at Folkestone Warren.**

Work started on Monday 4th March to install the fence for the trial grazing scheme in The Warren. The local contractor has started by cutting a narrow strip through the scrub ahead of the bird nesting season. Later in the spring the fence will be installed to enable a trial area to be grazed with Highland cattle in collaboration with a local farmer.

Regards, Dr Kirk Alexander, Partnership Manager, White Cliffs Countryside Partnership, Mobile (07885) 599182,

Email: [kirkalexander@whitecliffscountryside.org.uk](mailto:kirkalexander@whitecliffscountryside.org.uk). White Cliffs Business Park, Dover, Kent CT16 3PJ. Telephone (01304) 241806

Link to Newsletter: <https://www.kentparishes.gov.uk/capel-le-fernepc/UserFiles/file/Folkestone%20Warren%20News%20v5.pdf>

### **Saddle up for Air Ambulance bike ride**

Life-saving charity Kent, Surrey & Sussex Air Ambulance is appealing for cyclists to join its new-look Double 100 bike ride this summer.

The 100-mile or 100km ride on June 23<sup>rd</sup> will this year start and finish at the Surrey and Sussex helicopter base at Redhill Aerodrome.

Both new routes take in all counties covered by the two helicopters and the 100-mile route will pass through Marden in Kent – the home of Kent Air Ambulance.

More than 80 riders including Air Ambulance crew members and former patients took part in the inaugural Double 100 from Dunsfold Park, raising £12,000 for the charity.

Organisers are aiming for more than 100 entries in this going to be a much-needed feeding station on the day.”

The Double 100 is open to regular and occasional cyclists with feeding stations along the scenic route.

To register go to [www.kssairambulance.org.uk/FundRaising/Double100CycleChallenge](http://www.kssairambulance.org.uk/FundRaising/Double100CycleChallenge).

For more information call Julie Clare on 01622 833833 or email [juliec@kssairambulance.org.uk](mailto:juliec@kssairambulance.org.uk)

Kent Surrey Sussex



**Air Ambulance**  
A Charity That Saves Lives

The Air Ambulance service in Kent, Surrey and Sussex costs around £5 million annually to stay airborne. Receiving no funding from the National Lottery, the charity relies almost entirely upon the generosity of the public to support the two helicopters based at Marden in Kent and Redhill in Surrey

**For more information contact The Communications Team:**

Jamie Cheshire Press Officer 01622 833833 07800 904194 [jamiec@kssairambulance.org.uk](mailto:jamiec@kssairambulance.org.uk)

Nicci Chrisp Creative Communications Manager 01622 833833 [niccic@kssairambulance.org.uk](mailto:niccic@kssairambulance.org.uk)

Jill Playle Director of Communications 01622 833833 07894 512268 [jillp@kssairambulance.org.uk](mailto:jillp@kssairambulance.org.uk)

### **NEWS RELEASE - Red Arrows to return in June**

STAR performer at last year's Folkestone Airshow, the RAF Red Arrows aerobatics team is to return for the 2013 event, organiser Folkestone Town Centre Management Ltd (FTCM) has announced. On Saturday, June 8, it will be the first major display of the year for the team whose high-speed manoeuvres in 'diamond nine' formation have thrilled air show audiences all over the world.

Other RAF aircraft taking part will include the Battle of Britain Memorial Flight, comprising a Lancaster, Spitfire and Hurricane, a Typhoon Eurofighter, a Sea King sea-air search and rescue helicopter and a Tucano trainer in its new 2013 colours.

Folkestone Airshow project manager Yvonne Holder said that the day's programme would provide visitors with several hours of exciting flying displays as well as events, activities and entertainment on the Leas and harbour area.

"It's tremendous news that we shall be seeing the Red Arrows again - subject to RAF operational requirements at the time. They are much in demand - and we are delighted that Folkestone is among the venues where they will appear in 2013. It will be a great day and our preparations to welcome scores of thousands of sky-watchers are well under way.

"Staging a quality event on the scale of an air show is complex and doesn't come cheap, though", added Ms Holder. "As well as the cost of the Red Arrows and other aircraft - the charge for each plane taking part is thousands of pounds - there are numerous upfront expenses, which range from employing a specialist air show management company to procure aircraft, obtain licenses and work with the RAF and aviation authorities to set up the time-tabled flying programme to such mundane but essential tasks as hiring mobile toilets.

"Our ambition is to make Folkestone Airshow 2013 the biggest and best yet. FTFCM, as a not-for-profit organisation, depends almost entirely on commercial sponsorship to fund its events programme, and we have launched some attractive sponsorship opportunities which will enable companies and organisations to support the town's premier public event of the year and at the same time to promote themselves".

Discover Folkestone, Hythe & Romney Marsh manager Chris Kirkham said that the three-day show, June 7, 8 and 9, was expected to attract 100,000 visitors, including a significant number from France, Belgium and Holland.

"Their estimated spend in shops and on accommodation, food, drink and entertainment is £12 million - a whopping fifty-fold return on the investment of staging the event. The potential benefits - immediate and longer-term - are huge".

For information about sponsorship and other opportunities log on to [www.folkestoneairshow.com](http://www.folkestoneairshow.com)

### **Media contacts:**

Ted Kirkham - 01303 230688; e-mail: [eurotourism@teamkirkham.co.uk](mailto:eurotourism@teamkirkham.co.uk)

Yvonne Holder - e-mail: [yvonne.holder@folkestoneairshow.com](mailto:yvonne.holder@folkestoneairshow.com)



Folkestone Airshow 2013 is organised by Folkestone Town Centre Management Ltd. Registered Company in England No. 4152175. Registered Office 29, Manor Road, Folkestone, Kent. CT20 2SE



**Saturday, 8 June 2013**