

# GRAPEVINE

Capel-le-Ferne Village Newsletter

JUNE 2018 - ISSUE NO: 271

**PLEASE NOTE IT IS EDITOR'S DECISION ON FINAL CONTENT**

## YOU ARE ALL INVITED TO

### A COFFEE MORNING

Friday, 1<sup>st</sup> June

10:00am to 12:00noon

Where

St Radigund's Church Hall,  
Albany Road, Capel-le-Ferne, CT18 7JT  
Please come along. We'd love to see you.  
You never know, you might make some new  
friends. If you have limited mobility and  
can't get to the church hall, please phone Jan  
Milliken on 01303257003 and we will try to  
arrange transport for you

"from small  
acorns,



mighty oaks  
will grow"

CAPELCARES

## OFFICIAL OPENING OF POSTIE JAY'S BENCH

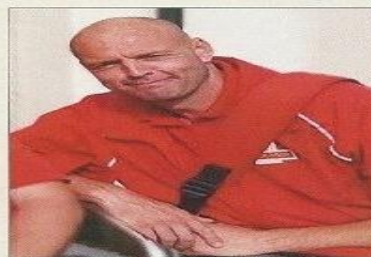
SATURDAY, 2<sup>nd</sup> JUNE 2018 AT 3:00PM. PLAYING FIELD,  
LANCASTER AVENUE, CAPEL-LE-FERNE, CT18 7LX.

The amount raised towards Postman Jay's Bench reached £913.00.

The Parish Council have now purchased the bench and it was  
installed today by Capel Groundworks. An official public opening  
of the bench will take place with Jay's family on Saturday, 2<sup>nd</sup> June  
2018 at 3pm, Playing Field, Lancaster Avenue, Capel-le-Ferne,  
CT18 7LX, followed by tea/coffee refreshments in the Village Hall  
(small room). Please come along and join us at this event to mark  
the life of

*Jason John Schafer*

*4th June 1974 - 26th December 2017*



## Film Club

Capel Village Hall  
Lancaster Avenue,  
Capel-le-Ferne, CT18 7LX

### FILMS ON THEIR WAY!

**Tuesday, 26<sup>th</sup> June**

**Darkest Hour (Churchill) followed by  
Goodbye Christopher Robin**

Doors open at 2.00pm  
with the film showing at 2.15pm  
Cost of entry is £5.00 which includes  
a raffle and a cup of tea at the  
beginning of the show.

If there are any films you would like  
to see, then please talk to Bob Preedy  
at the film show or  
contact the Hall Trustees.

## Youth Club Car Treasure Hunt

Saturday 16<sup>th</sup> June – Meet at village hall for 2pm

Have fun & support your Youth Clubs' fundraiser – only £10 per car  
Summer Hampers draw after, with raffle prizes also available

Follow the clues to get the answers, with some extra points available,  
win some great prizes – This is not a race though – no silly driving !

Streets-2-Streets for Fish n Chip supper after at the hall park, bring a few  
drinks and picnic blankets, chill out evening after.

To book your car in advance – Call or Txt:  
Simon 07860 803767 or Debbie 07399 430765



## "WHAT'S ON" IN CAPEL-LE-FERNE

*If you know details of your event in advance, please let Editor know so  
organisations avoid booking same date*

2 <sup>nd</sup> Jun	Official Opening of Postie Jay's Bench
8 <sup>th</sup> Jun	Frank Conley on Gilbert Sullivan- Heroes and Villains
12 <sup>th</sup> Jun	WI - Mrs Kath Clark – History of Capel-le-Ferne (page 13)
26 <sup>th</sup> Jun	FILM SHOW @ Village Hall (Page 6)
14 <sup>th</sup> Jun	Capel Youth Club Annual General Meeting (page 6)
16 <sup>th</sup> Jun	Capel Youth Club Car Treasure Hunt (page 6)
29 <sup>th</sup> Jun	BINGO NIGHT – WI @ Church Hall, (page 13)
7 <sup>th</sup> Jul	Capel School Summer Fete (page 5)
10 <sup>th</sup> Jul	WI - Dr Gehad Homsey – Mercy Ships (page 13)
13 <sup>th</sup> Jul	Adrian Christian Mires - Classical Guitar recital
14 <sup>th</sup> Aug	WI - Garden Meeting (2.30 p.m.) TBA (page 13)
2 <sup>nd</sup> Sep	GARAGE SAFARI
11 <sup>th</sup> Sep	WI - Burlesque Evening (page 13)
6 <sup>th</sup> Oct	Quiz Night @ Capel School – Capel Youth Club 7.30pm start
9 <sup>th</sup> Oct	WI - Mrs Glynis Miller – Food Banks (page 13)
10 <sup>th</sup> Nov	Craft Fair @ Village Hall (page 14)
11 <sup>th</sup> Nov	Battle's Over – A Nation's Tribute & WWI Beacons of Light (page 11)
13 <sup>th</sup> Nov	WI - Annual Meeting – Helen Stevenson Quiz (page 13)
11 <sup>th</sup> Dec	WI – Christmas Meeting (page 13)

**theWI**  
INSPIRING WOMEN

CAPEL - LE - FERNE EVENING WI

BINGO EVENING

(& SCATTERGORIES)

**FRIDAY 29<sup>th</sup> June 2018**

CAPEL-LE-FERNE CHURCH HALL, (ALBANY ROAD)

FREE ENTRY - BRING OWN FOOD AND  
REFRESHMENTS

DOORS OPEN 6.45pm. Eyes down 7.00pm

COME AND HAVE A REALLY GOOD EVENING

YOU DON'T HAVE TO BELONG TO THE WI

THIS EVENT IS OPEN TO EVERYBODY

2  
CHURCH SERVICES, June 2018

Date	Alkham	Capel	Hougham
<b>Sunday 3<sup>rd</sup></b> <b>1<sup>st</sup> Sunday after Trinity</b>	<b>Evensong 6.30 pm</b>	<b>Eucharist 9.30 am</b>	<b>Worshipping Together 11am</b>
<b>Saturday 9<sup>th</sup></b> <i>Fun, fellowship and food – please let Pam (01303 489006) or Brian (01303 243784) know if you plan to come.</i>		 <b>(St Radigund's)</b> <b>3.00 – 5.00 pm</b>	
<b>Sunday 10<sup>th</sup></b> <b>2<sup>nd</sup> Sunday after Trinity</b>	<b>Eucharist 9.30 am</b>	<b>Worshipping Together 11 am</b>	
<b>Sunday 17<sup>th</sup></b> <b>3<sup>rd</sup> Sunday after Trinity</b>	<b>Worshipping Together 11 am</b>	<b>Evensong 6.00 pm</b>	<b>Eucharist 9:30 am</b>
<b>Sunday 24<sup>th</sup></b> <b>Birth of John the Baptist</b>			<b>Benefice Eucharist with Prayer Ministry 10.00 am</b>
<b>Visit us online at: <a href="http://www.church-alkham-capel-hougham.org.uk">www.church-alkham-capel-hougham.org.uk</a></b>			

### *From the Vicarage*

Norwich was once the home the first woman to write a book in English – Julian of Norwich. She lived towards the end of the fourteenth century, and lived as an anchoress – a woman who lived in a cell alongside a church, dedicated to a life of prayer and to doling out advice to those who came to her window asking for it. Today visitors can see St Julian's Church, heavily rebuilt after being bombed in 1942, and Mother Julian's cell – just as I did recently.

Mother Julian was convinced that with God, our failings – whatever and however serious they might be – never have the last word. “All Shall Be Well,” she famously wrote – a comforting thought in our anxious times, ideal for printing on a mug. Yes, I do have one.

I had travelled to Norwich by train. Everything had gone smoothly until about half an hour away from journey's end when we slowed to a crawl.

The PA system crackled. The conductor explained that we were approaching a series of level crossings. There had been reports of something on the line, and they had been told to slow and keep a sharp lookout. In mid-sentence, he suddenly interrupted himself: LOOK AT THAT VOLVO!

Of course, everyone did just that. With the barrier down and nothing in sight, the Volvo driver had impatiently positioned himself ready to zig-zag over the line until alerted to the approach of our train. He sat sheepishly at the wheel as one coachload of passengers after another rumbled past, eyeballing him as they went, accompanied by a furious lecture from the conductor over the PA system about rules at level crossings.

“All Shall Be Well,” wrote Mother Julian. But whatever our shortcomings are, it probably helps if we work on them. *Brian*

### **Capel Church Hall Fund - Programme for 2018**

On Saturday 12th of May The Snowdown Colliery Welfare Male Voice Choir gave us an excellent evening of mainly Welsh singing with a programme largely based on the concert that they will be taking part in on the 19th of May when 1000 Welsh male voices will join together in The Royal Albert Hall.

The next event for Capel Church Hall Fund will be in St Radigunds Church, Albany Road, Capel on Friday June 8th at 7.30pm when Frank Conley will be giving a new talk on Gilbert & Sullivan entitled Heroes and Villains. Admission will be £5 which will include a cup of tea/coffee and a biscuit. It does help if you can let me know in advance if you plan to attend so we know how many to cater for but you can always just turn up on the night, you will be most welcome.

**John Oliver, Chairman, Capel Church Hall Fund,**  
**Tel: 01303 251403 or e mail to [johne.oliver22@gmail.com](mailto:johne.oliver22@gmail.com)**

### **PLEASE NOTE ... BOTH - ST RADIGUND'S CHURCH AND HALL ARE AVAILABLE FOR LETTING PURPOSES**

- Rates £10 per hour (negotiable for block bookings, local residents). • PA/Sound system available • WiFi available
- Booking Policy available from Audrey Goaten, 32 Albany Road, Capel-le-Ferne. CT18 7LA.
- Tel: 01303 244735. Email: [tryke@audrey47.plus.com](mailto:tryke@audrey47.plus.com)

# Capel le Ferne Village Hall – providing services to the local community

<http://www.capelvillagehall.com> REGISTERED CHARITY No.281786



Something to celebrate? Want to hold a party?

Need to organise a meeting or training session?

Want to start a teatime chat group or a new sports club?

Licenced for most things (except hypnosis and boxing)  
including sale of alcohol, PRS, raffles.

To hire tables/chairs contact Jayne 01303211480

To view the hall, or to make a booking contact the letting secretary Sue Leaning

Email: [fredandsueleaning@yahoo.co.uk](mailto:fredandsueleaning@yahoo.co.uk) (preferred) - Or on 07939 095880

This month's meeting covered a wide range of issues; initially these were the things which need to be done in the near future to keep the hall fit for purpose and a pleasant environment for hirers, which was easy to plan. Things became considerably more depressing as we looked to the long term future for the hall and the impact on all who use it. Put simply, Trustees see no long term future for the hall unless more help and support is forthcoming from the community to whom the hall was donated. The consequences are not pleasant to think about but we would ask you to spend a few minutes thinking about how different things would be if there was no village hall or car park.

Support for the hall could come in all shapes and sizes, from volunteering to help set up/clear up the market, shopping there, or attending the fundraising events, through to joining the committee as a trustee. There was a warning a few years ago about the potential closure of the hall and only one person cared enough to help. In a nut shell unless people are prepared to help the future will be the closure of the hall and sale of the building.

Although the hall belongs to the community the monies from the sale would go to the Charity Commission for 'safekeeping' until someone is prepared to re-build a village hall and run it. Without support from the community, the committee cannot avoid it! I wonder what the site would be used for if it was sold.

A few changes with the notices in the village hall are being made with the paperwork we use, and the way things are reported in Grapevine. It all leads back to the General Data Protection Regulations, which affects every organisation which holds any personal information about members or speakers. This is still passing through Parliament and so may be subject to some changes. In line with the new legislation information will be displayed in the hall, but in the interim the committee can assure everyone that personal data for hirers is NEVER shared with third parties. The only data that is shared is that required by the Charity Commission and relates to Trustees. Until what we need to do is clearer, winners of the 100+ club will be identified by number and first name only.

All organisations displaying notices in the hall will need to ensure that what they put on notice boards complies with the new regulations.

It was disappointing that it was necessary to cancel the Railway Swing Band concert. It was an event the band, and the committee were looking forward to and the Valiant Sailor had agreed to run the bar for us. The reasons for cancellation were beyond anything the committee, band or Valiant Sailor could control. We would like to thank them for all their help in arrangements and apologise for any inconvenience.

Arrangements for the community garage sales day have now been agreed. It will be held on 2<sup>nd</sup> September and the cost of inclusion on the map has been held at £5. This event is a major fundraiser for the hall and Cherry, who is co-ordinating the maps, can be contacted on 255114 or at the Farmers' Market.

People have asked that the Craft Fair be organised again so one will be held on 10<sup>th</sup> November. There is a variety of stalls booked already, including WI cakes, so put the date in your diary now.

Another important date is 31<sup>st</sup> December when the New Years' Eve event will be held, with preference given to Capel residents. It's a great night with Chicory Tip and an American supper. If you are interested and, would like to avoid any worry about the drink and drive home issue, reserve your place by contacting Jenny (250928) or Jayne (211480) before it is advertised more widely.

## Garage Safari 2nd September.

### Further information to follow.

\*\*\*\*\*

#### RECYCLING - INSIDE THE HALL

Boxes are provided for:

Used Stamps for Donkey Sanctuary and McMillan Cancer

Bottle Tops are also being collected again.

Please place the above in the relevant boxes.

\*\*\*\*\*

#### CONTINUOUS EVENTS

Books & jigsaws: A wide variety of books are available on an 'honesty basis. These are on trollies in corridor. Thanks to all who have donated

Farmers Market: Tuesdays 10 a.m. to 12.30 p.m.

Stalls selling local produce every week, including (but not limited to) artisan breads, pies, meats, fruit, veg and a postal service.

\*\*\*\*\*

Capel-le-Ferne History Book "Village in the Clouds"  
Copies still available £5 each from Cherry: Tel: 01303 255114

#### WINNERS OF 100+ CLUB - APRIL

1<sup>st</sup> 116 Lyn & Jean

2<sup>nd</sup> 81 M Stone 3<sup>rd</sup> 134 K. Leppard

New Year's Eve in Capel le Ferne. Chicory Tip have agreed to perform on New Year's Eve this year. The format for the evening will be similar to that in 2017.

Last year there was a waiting list for tickets so Capel-le-Ferne residents will have priority in reserving tables.

To reserve your place(s) please contact Jenny Carter 01303 250928 or Jayne Stone on 01303 211480.



## CAPEL-LE-FERNE FARMERS MARKET

Now in our 13<sup>th</sup> Year

Every Tuesday 10 a.m. to 12.30 p.m.

Village Hall, Lancaster Avenue, Capel-le-Ferne,  
Folkestone CT18 7LX

Visit us on Facebook <https://www.facebook.com>



## CAPEL LE FERNE FARMERS' MARKET

CAPEL LE FERNE VILLAGE HALL  
LANCASTER AVE, CAPEL LE FERNE CT18 7LX  
**EVERY TUESDAY 10.00 - 12.30**



**THE FRIENDLIEST MARKET IN TOWN**  
**PRODUCE DIRECT FROM LOCAL FARMS IN KENT,**  
**SUPPLEMENTED WITH SELECTED ITEMS DIRECT FROM**  
**CONVENT GARDEN AND THE WEEKLY CRAFT FAIR.**  
**REFRESHMENTS, POSTAL SERVICE, BOOKS AND JIGSAWS.**



**ORDER IN ADVANCE [farmersmarketonline.co.uk](http://farmersmarketonline.co.uk) OR**  
**TELEPHONE 01303 211 480 FOR MORE INFORMATION**

Order by noon on Sunday for collection or delivery on Tuesday.

Go to <http://farmersmarketonline.co.uk> and choose from our pre-selected veg and recipe boxes or pick from the usual producers. Not going to be in? We can leave the food in cool containers to keep your food fresh. Once you have chosen your deliver/pick up options click the buttons below to shop. Why not try our boxes, they make shopping easier and are extremely good value.



## Pro Services – Paul Relf Optimum Services

4 Queen's Lea, West Hougham, CT15 7BJ.

Tel: 01304 214166. Mobile: 07787 910961

[paulrelf@hotmail.co.uk](mailto:paulrelf@hotmail.co.uk)

## Garden & Property Maintenance Services & Handyman - No job too small

Fencing, Decking, Pointing, Brick-work repair,  
Carpentry, Guttering, Diamond hole drilling,  
Pressure washing, Decorating, Kitchen fitting,  
Worktop fitting, Shed repair, Concreting, Etc.,

**PLEASE ENQUIRE FOR ANY  
JOBS NOT LISTED**

**Help your child  
go far with  
Kip McGrath**

Our qualified teachers create individual  
tutoring programmes for your child, using  
proven Kip McGrath methods.

Call today  
for a **FREE**  
assessment

✓Maths ✓Reading  
✓English ✓11 Plus



[www.kipmcgrath.co.uk/folkestone-hythe](http://www.kipmcgrath.co.uk/folkestone-hythe)



**Folkestone & Hythe Centre**

17, Manor Road, Folkestone, CT20 2SA

☎ 01303 249 100

[folkestonehythe@kip-mcgrath.com](mailto:folkestonehythe@kip-mcgrath.com)



**LAWNMOWER  
REPAIRS  
SERVICING**

**COLLECTION & DELIVERY  
CAPEL AREA**

Tel: 01303 489841



**Judo I.B.F. Club  
ET.1978**

**Every Wednesday**

**Capel le Ferne Village Hall**

**Juniors (6-9 years) 5.30pm-6.30pm.**

**Seniors (10 years +) 6.30pm-8.00pm**

**Senior Coach: Colin Carrott 3<sup>rd</sup> Dan**

**Tel: 01303 211594**

**Technical Advisor: Colin Ogburn 3<sup>rd</sup> Dan**

**Tel: 07917131571.**

**New Members Very Welcome**

**Up to 5 Qualified Insured Instructors &  
Coaches to give expert tuition.**

**Come & try this DYNAMIC MARTIAL ART**



**CAPEL-LE-FERNE PRESCHOOL**

*Serving the community since 1968*

THE VILLAGE HALL LANCASTER AVENUE  
CAPEL-LE-FERNE FOLKESTONE, KENT  
CT18 7LX

Email: [capelpreschool@btinternet.com](mailto:capelpreschool@btinternet.com)  
OFSTED No: EY306428

### OPEN

MONDAY 0800 – 1300hrs  
WEDNESDAY 0800 – 1300hrs  
THURSDAY 0800 – 1500hrs  
FRIDAY 0800 – 1300hrs  
(Term time only)

Registered to offer up to **15 hours Free Childcare & Education**  
For all eligible 2, 3 and 4 year olds

### ALSO AVAILABLE

#### STAY and PLAY

Looking for something to entertain  
your baby or toddler?  
Why not pop along to our

#### Drop-in sessions

For all under 5's accompanied  
by their mums, dads or carers!

A fantastic opportunity for you and  
your child to meet new friends and  
find out more about us.

#### CRÈCHE SERVICE

(Registered with Ofsted)

**Last minute appointment?**

Maybe, occasionally, you just  
**Need a little bit more  
child free time to catch up  
on a few things?**

Available for all children, not just  
those who are currently registered  
with us.



Capel-le-Ferne Primary School  
**Walking Bus Stop Drop off point**  
Mon, Wed, Thur, Fri from 0800hrs  
**£2.00 (Inc. Breakfast)**

Want to know more? Just knock on the door  
Pop in for a look, no need to book  
Can't make it to the hall? Just give us a call

**TELEPHONE 07977838609**



**GARDENERS'  
ASSOCIATION**

A big thank you for the people who took part in the  
spring show.

Changing the subject I am running a trip to  
Loseley Park Gardens and House on the 24<sup>th</sup> June  
from Capel at 9.00am it will be about £25 each.  
The 2.5 acre walled garden considered to be one of  
the loveliest in the south east.

If you wish to go it is open to anyone,  
ring me on 01303 259105. Brian

**FOR MORE INFORMATION CONTACT  
BRIAN CASTLE - 01303 259105**

# Summer Fete

CAPEL LE FERNE PRIMARY SCHOOL

Capel Street, Capel-le-Ferne. CT18 7HB

**SATURDAY 7 JULY**  
**11AM - 3PM**

GAMES

TOMBOLA

HOT FOOD

FACE PAINTING

ICE CREAMS

WELLY TOSS

TUG OF WAR

AND LOTS MORE...

www.capelleferneprimary.co.uk/pfa  
01303 251353

ADMISSION:  
KIDS GO FREE  
ADULTS 50p

# Self Storage 20ft x 8ft

New containers,  
Secure yard  
Easy In/Out Terms



£100 per calendar month

TEL: 07850 834782



Dave Parker Services  
Capel-le-Ferne

## Capel Renovations

With pride, we complete a high quality finish and give friendly, yet professional services at competitive rates.

- Kitchens, Bathrooms and Tiling
- Windows, Doors and Conservatories
- Flooring, Internal doors and Decorating
- Roofline, Verges and Cladding
- Facia, Soffit and Guttering
- Fencing, Gates and Decking
- Loft Conversions, Extensions and more

Our trades are qualified, certified and CRB checked for peace of mind. For a free trustworthy no obligation quote or general information please call Dan on:

07746708227

[capelrenovations@hotmail.com](mailto:capelrenovations@hotmail.com)

6

### CAPEL-LE-FERNE YOUTH CLUB

Every 1<sup>st</sup> and 3<sup>rd</sup> Thursday in the month from 7.30pm to 9.30pm.

Please come along and your first evening is free!

**Any issues/queries – Please contact the Chairperson, Simon on 07860803767**

**ALL PARENTS ARE WELCOME TO ATTEND**

**Please ensure you collect your children from the hall, not the Car Park, even on light evenings.**

### ACTIVITIES

Capel-le-Ferne Youth Club, AGM this year is on Thursday 14th June at 7pm, please do come and join us, nibbles n drinks available too!!

Followed by our summer Car Treasure Hunt on Saturday 16th June at 2pm at the hall, bit of a fun afternoon, not a race, all welcome...



### Youth Club Car Treasure Hunt



Saturday 16<sup>th</sup> June – Meet at village hall for 2pm

Have fun & support your Youth Clubs' fundraiser – only £10 per car

Summer Hampers draw after, with raffle prizes also available

Follow the clues to get the answers, with some extra points available, win some great prizes – This is not a race though – no silly driving!

Streetz-2-Streetz for Fish n Chip supper after at the hall park, bring a few drinks and picnic blankets, chill out evening after.

To book your car in advance – Call or Txt:

Simon 07860 803767 or Debbie 07399 430765



**Saturday, 6<sup>th</sup> October @ Capel School**  
**QUIZ NIGHT**  
**7pm for a 7.30pm Start**

# Home Care With a Difference



## Tailor made to your individual requirements

- Award winning care
- Companionship services
- Home help services
- Personal care services
- Highly trained CAREGivers

If someone in your family needs a little help  
please call us on **01303 847899**

[www.homeinstead.co.uk/folkestone](http://www.homeinstead.co.uk/folkestone)  
300 Cheriton Road, Folkestone, Kent, CT19 4DP

Each Home Instead Senior Care® franchise office is independently owned and operated. Copyright © Home Instead 2017.

**Home Instead**  
**SENIOR CARE®**  
*To us, it's personal.*



**PROPERTY REPAIRS - REFURBISHMENT - CLEANING - GARDENING**

Established in 1998, DMS Property Maintenance is a family run business based in South East Kent specialising in all areas of property care.

Our company offers a wide range of services such as:

- **PROPERTY REPAIRS**
- **REFURBISHMENT**
- **CLEANING**
- **GARDENING**
- **BUILDING EXTENSIONS**



**CALL NOW FOR A  
FREE QUOTATION**  
**NO JOB TOO BIG OR SMALL!**

**Call: 01303 248 828**

Visit: [www.dmspropertymaintenance.co.uk](http://www.dmspropertymaintenance.co.uk)

## Property Maintenance

LET US DO THE HARD WORK



- |  |  |  |
|--|--|--|
| <ul style="list-style-type: none"> <li>• Responsive Repairs</li> <li>• Roofing</li> <li>• Kitchens</li> <li>• Bathrooms</li> <li>• Emergency Call Outs</li> <li>• Guttering</li> <li>• Planned Property Repairs</li> <li>• Fascias / Soffits</li> <li>• Voids and Refurbishment</li> <li>• Repointing</li> <li>• Plumbing</li> <li>• Doors</li> <li>• Plastering</li> <li>• Metal Security Doors</li> <li>• Surveying Services</li> <li>• Rendering</li> <li>• Locksmiths</li> <li>• Pest Control</li> <li>• Tiling</li> <li>• Woodworm Treatment</li> <li>• Asbestos Removal</li> </ul> | <ul style="list-style-type: none"> <li>• Painting</li> <li>• Gas / Electrical</li> <li>• Decorating</li> <li>• Drainage</li> <li>• Damp Works</li> <li>• Jet Washing</li> <li>• Graffiti Removal</li> <li>• Cyclical Refurbishment</li> <li>• Brickwork</li> <li>• Grounds Maintenance</li> <li>• Gardening</li> <li>• Fire Precaution Works</li> <li>• Paving</li> <li>• Tree Surgery</li> <li>• Fencing</li> <li>• Wet Rooms</li> <li>• Carpentry</li> <li>• Rubbish Removal</li> <li>• Safety flooring/non-slip flooring</li> <li>• Floor Coverings</li> <li>• Windows</li> </ul> | <ul style="list-style-type: none"> <li>• End Of Tenancy Cleans</li> <li>• Commercial Cleaning</li> <li>• Sparkle Cleans</li> <li>• Communal Cleaning</li> <li>• Cleaning – Domestic / Regular</li> <li>• Deep Cleans</li> <li>• Hygiene Cleans</li> <li>• Building Extensions</li> </ul> |
|--|--|--|





**Events at the Battle of Britain Memorial**  
**New Dover Road (B2011), Capel-le-Ferne,**  
**CT18 7JJ. Tel: No: 01303 249292**

Website: <https://www.battleofbritainmemorial.org/>

Facebook Page:

[https://www.facebook.com/rememberthefew/?ref=br\\_rs](https://www.facebook.com/rememberthefew/?ref=br_rs)

### **AN EXCITING YEAR AHEAD**

This year marks the 100th anniversary of the creation of the Royal Air Force, a major milestone for all those with links to the service.

The Battle of Britain Memorial Trust here at Capel-le-Ferne will be playing its part in the celebrations as well as staging a number of local events and commemorations.

More details will be announced on the events below as they become available, but for now, make sure you put the dates in your diaries and keep an eye on the website at [www.battleofbritainmemorial.org](http://www.battleofbritainmemorial.org)

#### **Sunday 1 July**

Memorial Day, the Trust's annual commemoration, featuring an Act of Remembrance, flypast, band displays and laying of posies at the Christopher Foxley-Norris Memorial Wall.

#### **Saturday 18 August**

The Hardest Day - Family fun day to include various attractions including a ground-running Merlin engine and Airfix Make & Paint event.

#### **Friday 14 and Saturday 15 September**

Outdoor film screenings - for the first time ever, the site will provide a superb backdrop to the showing of two classic films; on the Friday evening, Open Air Cinema will show the 2017

blockbuster **Dunkirk**, while the following evening will see a screening of (you guessed it) **Battle of Britain**. Watch this space for details of how to book.

#### **Saturday 15 September**

Battle of Britain Day Act of Remembrance, 11am.

#### **Sunday 11 November**

Remembrance Day service of commemoration and remembrance marking the 100th anniversary of the end of World War One, 11am.

# **Craft Time**



**Want to learn a new craft or enhance your existing skills?**  
**Have a dabble in a variety of techniques, without lots of outlay.**

**Meet other like-minded crafters.**

**I am offering workshop sessions:**

**Papercrafts**

**Cardmaking**

**Construction projects**

**Box making**

**Jewellery projects**

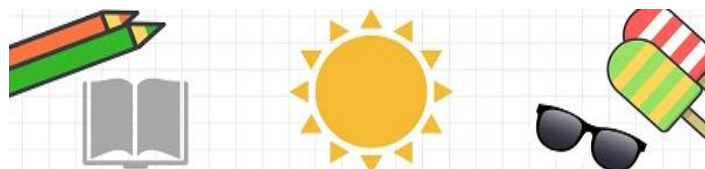
**All materials and equipment are provided for each session.**

**For further details please contact:**

**Diana**

**01303 245263**

**Email: [craftycrossley@gmail.com](mailto:craftycrossley@gmail.com)**



**KENT MS THERAPY CENTRE'S**

**'SCHOOL'S OUT FOR SUMMER' QUIZ NIGHT'**



**THURSDAY 28TH JUNE**  
**6.30PM ARRIVAL FOR 7PM**  
**START**  
**AT CANTERBURY COLLEGE**



**Entry £10.00 per person including**  
**a Chilli Supper**  
**Teams of 6 people**  
**Bar available plus a Charity Raffle**



**Plus a chance to win The KMSTC Quiz Winner's Trophy or Loser's Wooden Spoon!**

To book your team contact Sarah Bosley on [sbosley@kentmstc.org](mailto:sbosley@kentmstc.org) or on 01227 470876



The Quiz is being held at  
**Canterbury College,**  
**New Dover Road,**  
**Canterbury**  
**CT1 3AJ**

# Thursdays

**Streetz 2 Streetz**

WEDDINGS

MOBILE  
FISH  
&  
CHIP  
UNIT

KIDS PARTIES



CHRISTENINGS  
CHARITY EVENTS  
SCHOOL FETES



FISH SUPPERS  
PARTIES  
BOOT FAIRS



CALL: 07955 926 835  
FOR BOOKINGS & DETAILS



Amin Stores  
5-7pm



My name is Mark and I am a DSA approved fully qualified independent driving instructor.

I offer safe, friendly, calm and patient driving lesson where I will set clear lesson plans and record detailed progress sheets



- ✓ Big discount for your 1st 6 hours (new learners only)
- ✓ Block booking discounts
- ✓ Very competitive rates
- ✓ Door to door service
- ✓ Manual vehicle

07525 436253

mark@onthemarkdrivingschool.co.uk  
www.onthemarkdrivingschool.co.uk

Capel Le Ferne,  
Dover, Folkestone, Hythe  
and surrounding areas

**BRIGHT  
IDEA**  
ELECTRICAL SERVICES LTD

Colin Newton

www.brightideaelectrical.com

enquiries@brightideaelectrical.com



T 01303 778366

M 07855 431330



## CAPEL BAPTIST CHURCH

Capel Street.

Services 10.30am.

### Speakers for June

3<sup>rd</sup> June Pam Barr

10<sup>th</sup> June Greg Marlem

17<sup>th</sup> June David Hudson

24<sup>th</sup> June Pam Barr

### ALL WELCOME TO THESE ACTIVITIES

*If there are queries regarding these details,*

*please call 01303 489006 - Pam Barr*

*Please! A reminder that the public are requested not to park in front of the gates on Sunday mornings as this is a disabled access.*

## Do you ....

1. Need an extra telephone point in your house?
2. Need to relocate your existing telephone points to a more convenient place?
3. Need network cabling or system installation for your business?



For excellent rates call **JOHN**  
Fully qualified ex BT engineer  
with 12 years experience.

Mobile: 07766 068100 Tel: No: 01304 225420

Email: [johnwaller77@hotmail.co.uk](mailto:johnwaller77@hotmail.co.uk)

Website: <http://www.j-wallerservices.co.uk>

Half the price of BT OPENREACH ..... GUARANTEED



Jessica Young - MAAT

Accountancy, Book-keeping,  
Payroll and VAT services

For small businesses and sole traders  
Free initial consultation. Flexible hours

Contact details:

Mob: 07704 518251 Tel: 01303 259734

[jessicayoung323@gmail.com](mailto:jessicayoung323@gmail.com)

## Stephen Huxtable Garden Services

- Private and commercial garden and grounds maintenance
- Grass cutting, Hedge cutting, Garden clearance, Turfing.
- High quality fencing supplied and erected

Free estimates

01303 891720

[www.shgardenservices.co.uk](http://www.shgardenservices.co.uk)



## CAPEL-LE-FERNE PARISH COUNCIL

### Summary of some items discussed at meeting on Tuesday, 15<sup>th</sup> May 2018



At the meeting, Councillors elected a Chairman - Keith Pilcher and Vice Chairman - Chris Norris for the next year. Delegates agreed: Neighbourhood Watch – Julie Shaw, Play Equipment – Keith Pilcher, Highways – Brian Tutt, Public Rights of Way – Tony Lake, Planning – Gordon Holliday, Tony Lake, Chris Norris and Keith Pilcher, Council Spokesman – Tony Lake, SpeedWatch – Gemma Greening, Capel Cares – Tony Lake, Grapevine – Cherry Leppard. A Vacancy has arisen following the resignation (see below) of Jayne Stone and Councillors requested thanks are expressed to Jayne for her service to the Parish Council.

• **Requests from public to address the Council, plus any Surgery and Other Feedback** – Paragliding from Clifftop, and inconsiderate parking issues in Elizabeth Drive.

• **Defibrillator**: a disappointing attendance at the training sessions was reported. For information, below instructions to view video via “You Tube”. • **Traffic Management**: Traffic Survey on B2011 received and forwarded to Kent Highways Maintenance Engineer at Traffic & Network Solutions Team - waiting their response and advice on whether criteria is met to replace Vehicle Activated Sign (Folkestone bound). There may be a range of other things which could be done to address the traffic issues, so it was important that finances are used as effectively as possible and County Ward Councillor Geoff Lymer would also be approached for advice.

• **Planning**: Applications received: The status of all these were reported and full details available on Dover District Council website: <https://www.dover.gov.uk> >Planning>Applications>View-Applications>Decisions.

**DDC Review of Local Plan**: Timescale for consultation, Cllr: Scales reported to be 2019 now. Councillors agreed to make early enquiries of Dover District Council on making changes to the “Village Status” from Local Centre.

#### YOU TUBE LINK TO WATCH DEFIBRILLATOR TRAINING VIDEO

<https://www.youtube.com/watch?v=D630YXeHiY4>

### NOTICE IS HEREBY GIVEN

that due to the resignation of Jayne Stone, a vacancy has arisen in the Office of Councillor for the Parish Council.

If by 5 June 2018 (“14 days after the date of this notice”) a request for an election to fill the vacancy is made in writing to the Returning Officer at Elections Office, Council Offices, White Cliffs Business Park, Dover, Kent CT16 3PJ by TEN electors for the Electoral Area\*\*, an election will be held to fill the vacancy, otherwise the vacancy will be filled by co-option.

If an election is called, it will take place not later than 7 August 2018.

Dated 15 May 2018

\*In computing any period of time for this purpose, weekends, Bank Holidays or days appointed for public thanksgiving or mourning must be disregarded.

\*\* The request must come from TEN Local Government Electors for the Parish or the Parish Ward where the Parish is Warded.

- **Neighbourhood Watch**: Dog Warden and Community Warden making arrangements to be at Farmers’ Market and discuss Dog Fouling and perform Dog Chipping - (Date to follow). Inconsiderate parking continues to cause concern in the village and Parking Enforcement to be contacted for advice and attendance. Doorstep Crime Campaign to be enhanced with residents by Community Warden.
  - **Recreation and Other Equipment**: Monitoring report circulated to members. Skate Park sign repaired and refitted following vandalism. Grass contractors to be contacted on disappointment expressed on lack on May cuttings.
  - **Highways**: Village sign Dover end of B2011/Old Dover Road broken and slipped – to be reported to Kent Highways.
  - **Public Rights of Way**: Rapid growth in vegetation reported – first cut to be carried out early June. Enquiries to be made on cutting of hedgerows on PROW, Old Dover Road. **Speed Watch**: Sessions being arranged with operators. • **Other**: **Village Questionnaire** - Spreadsheet of results continue to be worked on by Councillors. Early indications relating to similarities on returned forms, to be addressed by Councillors accordingly. **Postie Jay’s Commemorative Bench** - Received and installed (see front page on details of official opening, Saturday, 2<sup>nd</sup> June at 3pm). **Community Bus Scheme** - to be addressed at June Meeting with a Representative attending from a company offering transport for rural areas to talk on what arrangements may be available for Capel-le-Ferne.
- PLEASE COME ALONG TO FIND OUT MORE.**

#### **Next Parish Council meeting is on Tuesday, 19<sup>th</sup> June 2018 at 7.30pm in the Village Hall (Small Hall).**

A COPY OF MINUTES and MEETING AGENDAS ARE AVAILABLE ON THE PARISH COUNCIL WEBSITE at <http://www.capel-le-fernepc.kentparishes.gov.uk/>

ALL PARISH COUNCIL MEETINGS ARE OPEN TO THE PUBLIC. SHOULD YOU WISH TO ATTEND and ADDRESS THE COUNCILLORS, PLEASE INFORM THE CLERK.

Further information on any of the above or to contact Parish Council, please write to Parish Clerk, 39 Victoria Road, or

Tel: 01303 259564. Email: [clerkcapellefernepc@btinternet.com](mailto:clerkcapellefernepc@btinternet.com)

REMINER THAT ALL INFORMATION BETWEEN GRAPEVINE NEWSLETTERS IS INCLUDED ON PARISH COUNCIL’S FACEBOOK PAGE or BY NOTIFICATION VIA EMAIL DATABASE.

PLEASE SHARE & PASS ON IF ANY OF YOUR FRIENDS OR FAMILY WISH TO BE INCLUDED IN THE PARISH COUNCIL EMAIL DATABASE TO RECEIVE NOTIFICATIONS, MESSAGES, NEIGHBOURHOOD WATCH INFORMATION, PLANNING APPLICATIONS AND “WHAT’S ON” EVENTS. CONTACT THE PARISH CLERK

or LIKE COUNCIL’S FACEBOOK PAGE.

<https://www.facebook.com/CapelLeFerneParishCouncil>

#### **Next Session, Tuesday, 19<sup>th</sup> June**

Is there an issue you wish to discuss with your Parish Council?  
A Councillor and the Parish Clerk will be available on the 3<sup>rd</sup> Tuesday of each month 10AM to 12:30PM At The Farmers’ Market (in the Chair Store Room, adjacent to Main Hall) Capel-le-Ferne Village Hall, Lancaster Avenue, Capel-le-Ferne, CT18 7LX

## Kent residents lost a whopping £12m of their hard earned cash to scams last year

**#RaiseABrow**



### Stop the criminals by:

- protecting yourself - don't be a victim
- Anybody can be scammed, but the elderly and vulnerable are more at risk. Look out for neighbours, friends and relatives.
- If you think you or they are a victim of a scam. You can report a scam, or a problem with a trader or product, to Trading Standards by contacting the national Citizens Advice consumer service. You don't need to call us directly, they will send details of your report to Kent County Council Trading Standards on your behalf.
- Consumer and general business advice is provided by fully trained staff at the Citizens Advice consumer service on behalf of Trading Standards.
- You can phone them, write to them, or fill in their online form. Citizens Advice consumer helpline: **03454 04 05 06**. Monday to Friday, 9am to 5pm

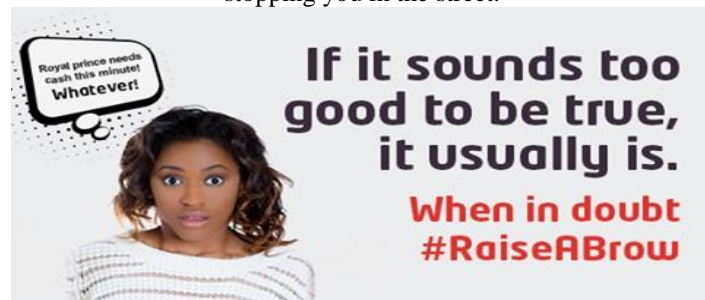
### Scam - it's a crime

Kent residents lost a whopping £12m of their hard earned cash to scams last year. Don't let it be you - if something sounds too good to be true **#RaiseABrow**

By questioning what you see and always checking first, you'll be reducing your chances of being a victim. To find out more about the kind of scams out there, how to protect yourself against them and who to report them to, visit: [www.kent.gov.uk/scams](http://www.kent.gov.uk/scams)

Criminals are tricking millions of people into parting with billions of pounds every year. These criminals are devious and will try to scam you into handing over money or personal details, like bank account information. They may even claim to be someone official like a Police Officer, a Trading Standards Officer or from HM Revenue and Customs.

You can be scammed by post, phone, email, text message, on fake websites, by adverts, by someone coming to your home or stopping you in the street.



## Battle's Over – A Nation's Tribute & WWI Beacons of Light 11th November 2018

On the 3rd August 1914, Britain's Foreign Minister, Sir Edward Grey, was looking out of his office window. It was dusk, and gas lights were being lit along London's Mall, leading to Buckingham Palace, when he remarked to a friend, "The lamps are going out all over Europe; we shall not see them lit again in our lifetime". Our country was about to be plunged into the darkness of the First World War, and it would be four long years before Britain and Europe would again experience the light of peace

In commemoration and remembrance of the end of the war and the many millions who were killed or came home dreadfully wounded, 1,000 WWI Beacons of Light will be lit throughout the United Kingdom, Channel Islands, Isle of Man and UK Overseas Territories at 7pm on the 11th November 2018 – a century after the guns fell silent.

**Capel-le-Ferne Parish Council in conjunction with The Battle of Britain Memorial Trust CIO invites you to join this tribute.** The programme of events on the 11<sup>th</sup> of November will include:

- WW1 event in the Village Hall
- A torchlight procession from the Village Hall to the Battle of Britain Memorial Site
- Procession gathers in the grounds of the Battle of Britain Memorial Site
- Battle's Over – The Last Post
- Battle's Over – WW1 Beacons Of Light,
- Battle's Over – Ringing out for Peace

Join us

**It will be your chance to pay your personal and community tribute to those millions that gave their lives for their country or returned home wounded during or after the dreadful darkness of four years of War 1914 – 1918**



**Greenview**

**Holiday Play Scheme & Creche**  
(2-11 Years) (3-23 months)

Monday to Friday 8am-6pm

Forest Sessions Dance Arts & Crafts Indoor & outdoor Games Sports Activities For All

Booking in advance advisable. Contact us: 01303 246699  
Email: [greenview.nursery@btinternet.com](mailto:greenview.nursery@btinternet.com)  
Greenview Nursery, The Old School, Capel Street, Capel-le-Ferne, Folkestone, Kent CT18 7EY.  
[www.greenviewnurserycapel.co.uk](http://www.greenviewnurserycapel.co.uk)



**Whitfield Computer Services**  
Lee Eversfield fdsc

Hardware & software problems • Installations • Upgrades  
Repairs • Internet set-up • Virus removal • General advice

**Tel: 01304 204227**  
E-Mail: [lee.eversfield21@tiscali.co.uk](mailto:lee.eversfield21@tiscali.co.uk)  
110 St Davids Avenue, Dover, Kent, CT17 9HN

**NO FIX, NO FEE • SPECIAL RATES FOR SENIOR CITIZENS**

*The Valiant Sailor*



Home made locally sourced pub food  
Beer garden with children's playground  
Live music and pub games  
Dog friendly

[www.thevaliantsailoruk.com](http://www.thevaliantsailoruk.com)  
Capel-Le-Ferne, Folkestone Tel: 01303 250737

**16th June - Chasing Mavericks - 9pm**

**30th June - Marty Russell - 9pm**

**Capel Coffee and Networking 2nd and last Tuesday of every month from 19:30**

**SPECTRUM FINANCIAL PLANNING LTD**  
Independent Financial Advisers

## **IS IT TIME FOR YOUR FINANCIAL HEALTH CHECK?**

I offer impartial, independent advice in the following areas:

- Lump Sum Investments and Savings
- Pensions and Retirement Planning
- Equity Release
- Life and Critical Illness Cover & Income Protection
- Tax planning

Ring me on 01303 244684

or email me at

[spectrumfinancialplanning@gmail.com](mailto:spectrumfinancialplanning@gmail.com)

to arrange a free initial consultation.

**Martin Wood**

Chartered Financial Planner

The Anchorage, 105 Capel Street,  
Capel-le-Ferne CT18 7HB

Spectrum Financial Planning Limited are an appointed representative of Best Practice IFA Group Limited which is authorised and regulated by the Financial Conduct Authority.

**Smart Cleaning**  
*For All Your Cleaning Needs*

- **Windows**
- **Carpets**
- **Gutter clearing/repairing**
- **Fascias and Plastics**
- **Commercial & Domestic Offices**
- **Jet washing patios/decking**

Please call or email to book or for a quote:

**Landline: 01303 778257**

**Mobile: 0777 584 8809**

**Email: [m.trow2@yahoo.co.uk](mailto:m.trow2@yahoo.co.uk)**

Hello everyone. Pam Barr welcomed everyone and there was apologies from our President Glynis Miller as she was on holiday. May's meeting for the WI is the month in which we discuss and vote our Resolutions and then the voting results are passed to the Delegate who is representing them at the Annual Meeting which this year is in Cardiff. We were a bit sparse on the ground but our chorus of Jerusalem still raised the rafters. It's a good way of shaking off the day's tribulations and reminds us of the many other Institutes in the WI movement.

1. This month's speaker was our Caroline Bunting who spoke to us about the forthcoming Resolution for this Year. "Mental Health Matters" This year's Resolution is even more important as it has been forefront in the news lately. Discussions followed for and against the Resolution and the Members passed the Resolution unanimously. The result is then given to Capel-le-Ferne's Delegate who this year is Caroline and she will convey the voting at the Annual Meeting in June.
2. The Business was discussed and various reports were given. Gwen gave a report on the Rainbow Knitting and although we did not win this year we did manage to get sponsorship to the tune of £101. Which I think is the best we have raised. Jean Bell was presented with a bouquet of flowers for her work that she has done for the past 30 years in raising money for Royal Marsden Hospital through having two Jumble Sales a year. She was also given an Achievement Award last month in recognition of her work and the Certificate was past round for everyone to look at. She is a remarkable woman and that was shown by everyone's resounding appreciation.

We then had Refreshments after which Caroline gave us an update on ACWW (Associated Country Women of the World). Caroline is the East Kent Federation Representative for ACWW and she quite often gets asked what is ACWW and what do they do, including our own Institute. The WI is affiliated to ACWW and is the only charity that they can give money to within the WI organisation. Every year the WI's collect 'Pennies for Friendship' which is then sent to ACWW to help with their various projects that they do for women all over the world. They ensure that women are taught about the importance of fresh clean water, growing their own food and selling the surplus, animal husbandry, business structure and how to stand on their own two feet. ACWW buy everything that is necessary for the women to start their business and no monies are given directly to them, this is so that the money is used directly for each project.

Caroline also told us about the New Project that has just been launched for East Kent Federation and hopefully it will do as well as when we did the "Watering Can Project" The new Project 1014 – India – Bee Project. In order to help raise the money Caroline is making Aprons, Tea Towels and Oven Gloves with Bees on them and they will be for sale. So if you would like to buy any of them, then let her know. Christine May gave the vote of thanks.

Next month's meeting is 12<sup>th</sup> June and is an alteration to the Programme. Our President Mrs Glynis Miller will give us a talk on 'Food Banks' and the Competition is a donation to the Food Bank. Nothing perishable and NO BEANS please.

A quick reminder to everyone about our regular events which were on the notice board for everyone to look at. The evening was rounded off with a quiz organised by Christine May Thank you Christine for that. We will all try harder next time. The competition was something beginning to do with Bees' and the results – 1. Vera (She was wearing her Bee T-Shirt) 2. Suzanne and 3. Barbara. The raffle was then drawn. We closed the meeting early and Pam wished everyone a safe journey home and thanked everyone for coming. And a safe journey to Pam who would not be with us next month as she is off to Malawi and we look forward to her update on the Toilet Blocks when she returns.

I'll round off now – I am standing in for Pat this month as she is on holiday. This is just a flavour of Capel-le-Ferne WI and if you'd like to join us for an evening ladies you are very welcome to join us on June 12<sup>th</sup>. We will be in the small village hall from 7.15pm ready to start at 7.30pm. Either just drop in

**A reminder to you all that our next Bingo Session will be on Friday 29<sup>th</sup> June 2018 in St Radigund's Church Hall, 6.45p.m, for 7.00p.m start, so make a note of the date in your diaries. Everyone welcome. You do not have to be in the WI to come so why not join us and have a good laugh.**

List of WI Monthly Meetings.

**June 12<sup>th</sup>**

Mrs Kath Clark - History of Capel-Le-Ferne

**July 10<sup>th</sup>**

Dr Gehad Homsey - Mercy Ships

**August 14<sup>th</sup>**

Garden Meeting (2.30 p.m.) TBA

**September 11<sup>th</sup>**

Burlesque Evening

**October 9<sup>th</sup>**

Mrs Glynis Miller – Food Banks

**November 13<sup>th</sup>**

Annual Meeting - Helen Stevenson Quiz

**December 11<sup>th</sup>**

CAPEL-LE-FERNE VILLAGE HALL

# CRAFT FAIR

**SATURDAY  
NOVEMBER 10th  
10AM - 2PM**

Plenty of goods lovingly  
handmade in Kent

Refreshments and Tombola

**HOSTED BY:**  
Capel-le-Ferne Village Hall Management Committee  
Lancaster Avenue, Capel-le-Ferne,  
Folkestone, Kent. CT18 7LX  
Telephone: 01303 211480

In aid of Capel-le-Ferne Village Hall  
registered charity number 281786



E.R Longley  
**hydroworks**

**SALES ♦ SERVICE ♦ SALT ♦ FILTERS**

Your local water softener and  
drinking filter specialist

**FREEPHONE**

**0800  
999  
4117**



**KENT 01304 606 100  
SUSSEX 01444 891 004**  
[www.hydroworks.co.uk](http://www.hydroworks.co.uk)  
[hello@hydroworks.co.uk](mailto:hello@hydroworks.co.uk)

**GRAPEVINE ADVERTISING from 1<sup>st</sup> April 2018**

This space could be advertising your commercial /business  
venture or, non-village organisation event.

Size 9cm x 3.5cm £ 13.00      Size 9cm x 7cm £20.00

Size 9cm x 13cm £28.00.

Size 20cm x 13cm £40.00 (½ page)

For further details contact Parish Clerk at  
39 Victoria Road, or Tel: 01303 259564.

Email: [clerkcapellefernepc@btinternet.com](mailto:clerkcapellefernepc@btinternet.com)



**SELL  
FOR  
1%**

**Capel's local estate agent – call us now for a free valuation**



**thomas & partners**  
Folkestone | Deal | Dover | Thanet | Herne Bay

**ESTATE AGENTS ♦ LETTING AGENTS ♦ PROPERTY MANAGEMENT**

t: Folkestone 01303 210 777 | Deal 01304 365 454 | Dover 01304 206 666

Thanet 01843 210111 | Herne Bay 01227 360226

w: [www.tapestates.com](http://www.tapestates.com) | e: [folkestone@tapestates.com](mailto:folkestone@tapestates.com)

f /thomas and partners folkestone limited

### **KCC launches campaign to help children cross safely**

Three in four crashes involving children on Kent's roads are because of youngsters not looking properly or paying attention before they cross. Child pedestrians are consistently shown to be at their most vulnerable between the ages of 11 and 16 as this is often when, with increasing independence, they begin their first solo pedestrian journeys on potentially unfamiliar routes.

As a result, Kent County Council's road safety team has launched a new campaign to address the issues with this age group.

KCC road safety team leader Vicky Harvey said: "These are simple messages – for instance ensuring you look right first - but it's clear that young pedestrians aren't properly considering the dangers when crossing the road.

"Modern technology is also causing distractions as well as not understanding the dangers when playing near roads and this campaign is a reminder of some of the simple strategies children can use to cross the road more safely."

"We want to get this message across to as many children who will be making their first trips to secondary school in September without their parents or guardians and new schools might mean longer journeys.

"To help us engage we'll be visiting retail centres across Kent over the summer holidays with videos and quizzes to help educate children in the importance of pedestrian safety."

The campaign, which includes adverts on buses, goes back to the 8-bit era of computer games and utilises pixel art to get the message across. It also harkens back to a time before children had mobile phones – a recent survey found 64% of children used their phones whilst crossing over or near roads. Visitors will be able to pick up a branded top-trump style game and keyring, further reinforcing the pedestrian safety messages.

Collision data shows most incidents take place at the start and end of the school day and boys are slightly higher in the statistics. Top tips:

- look right first – look left, then look right again before crossing - that's where the first car to hit you would come from, but also consider a speeding vehicle overtaking, so keep checking as you cross the road.
- don't mess about with friends near the road - concentrate for those few vital seconds to make sure it's the right time to cross.
- find a safer place to cross - could be a crossing or just away from parked cars.
- remove distractions such as earphones - have your mind on the road and what's important is to cross safely, your ears and eyes together will give you more information.
- do not use a mobile device while crossing the road - concentrating on a conversation or a song means you are not concentrating on what can do you most harm.

*Geoffrey Lymer, Kent County Councillor, Dover West Ward*



**Looking for Lighting?**  
**Lighting showroom and Electrical Wholesale**  
**Open to Public and Trade**  
**Independent friendly family run business**

**Unit 11 Kingsmead  
 Park Farm Ind Est  
 Folkestone  
 CT19 5EU  
 01303 487272**

**Open  
 Mon – Fri 8-5  
 Sat 9-1.30**

**Located behind Sainsburys**

## SOME PAPER CUTTINGS FOUND, FOR INFORMATION & INTEREST

**DOVER EXPRESS – 13<sup>th</sup> SEPT 1940**

### **CAPEL-LE-FERNE.**

#### **Killed by Enemy Action.**

Gnr. Joseph Pittock, R.A., whose home address is at "Irene," Victory Road, Capel, was killed by enemy action on Wednesday last week. Gunner Pittock, who was 36 years of age, was born at Folkestone. Prior to being called up for service as a Territorial about a week before the outbreak of war, he was employed for a number of years in the Folkestone Co-operative Stores' milk department. He leaves a widow and two young children. **Prisoner of War.**

Mrs. Bennett, residing with her mother, Mrs. Petts, of Capel Street, has received news that her husband, Corporal Bennett, reported missing since June, is a prisoner of war in Germany. He is in hospital with his right arm amputated.

PARISH OF  
ALKHAM WITH CAPEL-LE-FERNE.  
**A GARDEN FETE**  
Will be held (by kind permission of Lady Raphael) at  
**HOCKLEY SOLE, NEAR FOLKESTONE,**  
On **WEDNESDAY, 23<sup>rd</sup> JULY, 1930,**  
In Aid of the Church Funds.  
FETE WILL BE OPENED AT 3 P.M.  
STALLS, COMPETITIONS, COCO-NUT  
SHIES and many SIDE-SHOWS.  
Play, entitled "THE WRINGER," by the  
CANTERBURY DRAMATIC SOCIETY.  
DANCING DISPLAY by the PUPILS OF  
MADAME MAY V. WEEKS.  
**THE FOLKESTONE BRITISH LEGION**  
**MILITARY BAND.**  
*Tea and Light Refreshments.*  
Admission to the Grounds, 6d. Children, 3d.  
Frequent Buses from Folkestone and Dover.  
31267 g18

**DOVER EXPRESS 8<sup>TH</sup> APRIL 1938**

### **CAPEL-LE-FERNE.**

#### **Village Hall.**

A general public meeting was held in the School-room on Monday, the President, Mr. Barry, presiding, supported by Mrs. Walter, Hon. Secretary. There was a large attendance. The meeting was held to lay before the village the plans of plots of land which had been offered for the site. These consisted of:—Plot 1, 180ft. by 96ft., situated in Lancaster Avenue, given by Mr. Charles Hartley, of Tudor House, New Dover Rd. Plot 2, on the New Dover Rd., given by Mr. H. Copping. The conditions governing the offer made by Mr. Copping were that the hall be completed in two years and that the trustees be members of the Parish Council. No restrictions were put forward by Mr. Hartley. A ballot, by card, was taken, the result being—Mr. Hartley, 77; Mr. Copping 9. Mr. Hartley's site was thus accepted. The Hon. Secretary read a list of donations to date and members tendered their share monies—Lady Raphael, £25; Mr. and Mrs. Barry, £20; Mrs. Major, £10; this, together with £1 shares, making a total of £89 2s. Many present also took club cards, by which small sums may be paid to the Treasurer from time to time. It was decided to write to the Kent Council of Social Service for further particulars as to loans. Mr. Chambers moved and Mr. Hogben seconded, that the building committee proceed with the arrangements without a further meeting, unless circumstances made it necessary.

**DOVER EXPRESS 4<sup>TH</sup> MARCH 1938**

### **VILLAGE HALL FOR CAPEL-LE-FERNE.**

A public meeting was held at Capel School-room on Tuesday evening, to discuss the possibility of the erection of a Village Hall. Mr. T. J. Barry, Chairman of the Parish Council presided, and it was agreed to proceed with the project.

An offer of a plot, or a choice of plots of land for the erection of the hall had been made by Mr. and Mrs. Charles Hartley, of the Tudor House. A hearty vote of thanks was passed for the offer, and after discussion it was agreed that the Committee, which was formed, should inspect the sites and report to the next general meeting, on April 4th.

The Rev. D. Morgan told the meeting that there had been a feeling in the village for some years that the Church was standing in the way of the erection of a village hall, and he wished to state that neither he nor the Church he represented had stood in the way or wished to do so.

Messrs. Barry, Howie and Gardiner agreed to become the Trustees, and it was decided that the Trust should be named the "Village Hall Trust." It was reported that £11 8s. was already in hand for the venture and upon a suggestion being made by Mr. Goodwin that £1 shares should be taken up, promises of £25 were made at the meeting.

The following were elected to form the Building Committee:—The Rev. D. Morgan, Messrs. Atkins, Russell and G. Mason and Mrs. Walter; and the following were appointed on a Social and Entertainments Committee:—Messrs. Mason, Taylor, Hogben, Goldstone, P. Marsh and Canini, Miss Brown and Miss Mason. Mr. Barry was appointed Chairman and Mrs. Walter, Hon. Secretary (Mr. Russell having acted as Hon. Secretary for this inaugural meeting).



# Could you volunteer as a Trustee?

Charity Registration Number is 1102201

Home-Start Dover District is currently running an exciting new project supporting families with a disability and we are looking to expand our Board of Trustees.

Home-Start provides a home-vising volunteer support service to families with at least 1 child under 11. Volunteers offer weekly emotional and practical support to families in their own homes.

Do you have the time to attend our quarterly Trustee Meetings which alternate between day time and evenings and usually last for 2-3 hours? If so we are looking for volunteers who have knowledge/experience in any of the following areas:

- Supporting children and families
- Understanding child and or adult disability (either physical/mental)
- Professional skills ie., Marketing, Media, Fundraising

Being a Trustee with us is a rewarding role which can increase your employment/studying opportunities and can also offer you friendship. All out of pocket expenses will be reimbursed.

For further information please visit our website [www.home-startdoverdistrict.org.uk](http://www.home-startdoverdistrict.org.uk) or give us a call on 01034 242314. We would love to hear from you.



## CANCER RESEARCH JUMBLE SALE

The organisers would like to give a big thank you to all the villagers who either gave jumble, attended, or bought raffle tickets at the recent jumble sale at the village hall, in aid of The Royal Marsden Hospital cancer research fund.

Once again we had marvellous support from everyone, and managed to raise £1,080.04. It was good to top the £1,000 mark again, but it wouldn't be possible without all of our team members pulling together and of course the generous residents of Capel who always support us without fail.

The money has been sent off to The Royal Marsden Hospital who continue to do sterling work, into treatment and research for those in need. Who, after all, has not either had a friend, relative, or perhaps even themselves suffer the trauma of a brush with this awful disease? That's why it's important for us to continue raising funds in whatever ways we can.

So many people go out of their way to make it a success that it is impossible to thank them individually, they know who they are, and perhaps they will accept this as their public thank you.

We would now like to call upon you all to start putting anything you think we may be able to sell to one side for our next jumble sale on 13th October. Don't worry, we will remind you nearer the time about who to contact or where to take it.

Best wishes for a warm and pleasant summer, and thank you once again for your continued support.

The Organisers.





## Capel-le-Ferne Bowling Club

**Jenny Carter 01303 250928**  
**Barry Mansfield 01303 257157**  
**Ros Chandler 01303 255862**



During April the club had its AGM, Our Chairperson Jenny Carter read out her yearly report and announced she would be standing down from the committee but would still be an active member of the club.

### The new committee was elected as follows:-

Chairman.....Barry Mansfield	Vice Chairperson.....Wendy Leeming
Hon. Treasurer.....Ros Chandler	Hon. Secretary.....Racheal Chandler
Social Secretary....Elaine Wells	Team Captain.....Brian Wilson
Co-opted members	Barney Milner and Ray Waters

Some minor changes were made to the joining fees but the main concern was the dwindling number of members. It was agreed that we should have a Recruitment drive to entice new members to the club. New members are always made very welcome and short mat bowls is a very easy game to play, easy on the joints and back. We meet three times a week all year round, Tuesday nights 7:30 – 9:30, Wednesday afternoon 2 -4 pm Sunday afternoons 2- 4pm.

Come along and receive first class tuition from the East Kent League winners

We have different social events throughout the year and competitions.

The club competitions are now on the board.

(I would like to apologise to our member Barrie Pape who I missed of the list of winning league players).

*Barry Mansfield*



**The Capel Ramblers Walk dates are on the internet and new evening walks have started during the summer.**

**[http://capelramblers.co.uk/walk\\_dates.php](http://capelramblers.co.uk/walk_dates.php)**

F  
I  
T  
  
C  
L  
U  
B

IT'S FREE  
IT'S FUN  
IT'S FIT  
CLUB  
All abilities

FEEL GREAT. COME TO THE BRAND  
NEW FIT CLUB AT CAPEL-LE-FERNE  
EVERY SATURDAY  
MEET AT THE VILLAGE HALL 9.30 am



**Mobile Library**  
**Every Tuesday**

**EVERY TWO WEEKS – TUESDAYS ...**  
**NEXT STOPS 5<sup>th</sup> and 19<sup>th</sup> June**  
**Reece Adams House: 12:25pm – 12:55pm**  
**Victoria Road: 13:50pm – 14:20pm**



**KNIT & NATTER, REECE ADAMS  
HOUSE, CAULDHAM CLOSE.**  
 Crochet is on the agenda for beginners.  
 Or if crochet is your passion,  
 maybe you could help teach others.

**We make a grand cup of tea. No charge.**  
**EVERY THURSDAY, 2pm till 4pm.**  
**Everyone Welcome!**

**For more information contact Maggie 01303 245046.**

### Shepway Writers Group

Are you interested in creative writing? Now's your chance to put pen to paper and write short stories, poetry, or even that book you've been meaning to write.

Our informal group meets every month in Folkestone.  
 It's free to join, so why not come along and give it a go?  
 Contact Graham on 01303 470229 or 07722 560702.



USEFUL CONTACTS INCLUDING ACTIVITIES & CLUBS	CONTACT NAMES	TELEPHONE NUMBER
Police Community Safety Officer Email: <a href="mailto:58932@kent.pnn.police.uk">58932@kent.pnn.police.uk</a>	Ian Fox	07966 309064
Community Warden Email: <a href="mailto:andrew.hawkins@kent.gov.uk">andrew.hawkins@kent.gov.uk</a>	Andrew Hawkins	07811271303
Parish Council Chair	Keith Pilcher	01303 254731
Parish Council Clerk	Maureen Leppard	01303 259564
Village Hall Webmaster	Sally Cook	253838 / 07730475838
Village Hall Chairman & Maintenance	Brian Wilson	627172/07916258684
Village Hall Committee Vice Chair	Jayne Stone	01303 211480
Village Hall Committee Secretary	Sally Cook	253838 / 07730475838
Village Hall Committee Treasurer	Jenny Carter	01303 250928
Village Hall Committee Lettings <a href="mailto:fredandsueleaning@yahoo.co.uk">fredandsueleaning@yahoo.co.uk</a>	Sue Leaning (email preferred)	07939 095880
Village Hall Farmers' Market	Debbie Ovenden Jayne Stone	07427 626754 01303 211480
Village Hall Committee Trustee	Derek Jeffrey	01303 259842
Village Hall Committee Trustee	Cherry Leppard	01303 255114
Village Hall Committee Trustee	Mike Stone	01303 211480
Village Hall Committee Trustee	Roy Mann	07725943261
Village Hall Committee Trustee	Ruby Cook	01303 255569
Village Hall 100+ Club	Jenny Carter	01303 250928
Bridge Club	Bob Jones	01233 756362
Brownies	Sandra Sharpe	07818551806
Capel Baptist Church	Pam and Tony Barr	01303 489006
Capel Cares	Janet Milliken	01303 257003
Capel Ramblers	Bob Mothersele	01303 250931
Divas Dance	Rebecca Uden	01303 893650
Fit Friends – Pilates	Pam Vivien	01303 244322
Gardeners Association	Brian Castle	01303 259105
Household Bill Savers	Phil & Karoline Taylor	01303 246887
Judo	Colin Carrott	01303 211594 07917131571
Playgroup	Alison Cloake	07977 838609
Remote Control Car Club	Derek Jeffrey	01303 259842
Short Mat Bowls	Ros Chandler	01303 255862
St Radigunds Church	Rev Brian Williams	01303 243784
St Radigunds Church Hall Events	John Oliver	01303 251403
St Radigunds Church Hall Bookings	Audrey Goaten	01303 244735
St Radigunds Players and Choir	Jerry Spillett	01303 242146
Tai Chi	Anna	01304 205405
Twinning Association	Jerry Spillett	01303 242146
Welcome to Village Letter	Debbie Catling	01303 251525
WI	Jayne Stone	01303 211480
Youth Club	Simon Withey	07860803767

### "LEGITIMATE INTEREST"

In anticipation of the General Data Protection Regulation (GDPR) coming into force on 25th May 2018, we seek to continue to print your contact details on this Grapevine Page and in Inserts/Adverts for relevant insight and information purposes.

Therefore, due to changes in Data Protection Laws and your contact details being listed in this Newsletter, you have indicated a "legitimate interest" applies for permission to stay in touch and we would like to continue to keep you listed. Your data held, will only be used by Capel-le-Ferne Parish Council as a useful contact. We are committed to protecting your privacy and you have the right to withdraw your consent to be listed at any time, by notifying the Editor at the Capel-le-Ferne Parish Council new email address of [clerkcapellefernepc@btinternet.com](mailto:clerkcapellefernepc@btinternet.com)



**Any alterations or additions to this list, notify: Maureen Leppard (Editor) Tel: 01303 259564 or Email: [clerkcapellefernepc@btinternet.com](mailto:clerkcapellefernepc@btinternet.com)**

### Recycling/Waste Collection Dates: **Food Waste, Rubbish & Green**

**Waste**  
**Fridays, 8<sup>th</sup> and 22<sup>nd</sup> June**

**Food Waste & Recycling –**  
**Fridays, 1<sup>st</sup>, 15<sup>th</sup> and 29<sup>th</sup> June**

### Are you Lonely?

**Do you need someone to sit with your partner to enable you to go out?**

**Do you need help with shopping?**

**Do you need help with getting to the hospital or to your GP?**

**Do you have a problem with small maintenance jobs in the house?**

**Do you need help with safety in your home?**

**Would you like help to contact other services?**

**If so, please contact Capel Cares.**

**We have a small band of volunteers who may be able to assist you.**

**Telephone: Jan Milliken on 01303 257003 or**

**Email [janetmilliken@hotmail.co.uk](mailto:janetmilliken@hotmail.co.uk)**



Andrew the Kent County Council Community Warden for Capel-le-Ferne and Hawkinge, has now completed a crime prevention survey course. Therefore, if any residents would like "Crime Prevention Advice and a Survey" on their property, free of charge, please contact him by phone or email.

Tel: 07811 271303.

Email: [andrew.hawkins@kent.gov.uk](mailto:andrew.hawkins@kent.gov.uk)



**Computer Problems Solved**

Tel: 01303 241325 Mob: 07968 129902

Approx **£45**

\*Computers, laptops, tablets, smart phones and TVs, PCs set up &amp; supplied.

\*PC setup includes Internet, Email, Security, Video calling, Office Programs, data transfer

\* Data recovery \*Internet connection problems

\*Web sites built &amp; hosted from £10 per month.

\*Tuition available by a qualified tutor

Ring Tony for a fast and friendly service

See **www.computers-in-kent.co.uk** for details


**East Kent Foot Care**

Experienced, Established, Trusted, Registered

Mobile Foot Health Practitioners (BSc, MAFHP, MCFHP)

Treating and managing common foot problems, corns, callus, verrucae, thickened nails, fungal problems, toe and finger nail management, diabetic foot assessments.

**07745 532075**

**www.eastkentfootcare.co.uk**

**Absolute Security****LOCKSMITHS**

Opening hours: Mon-Fri, 9am – 6pm

Saturday, 9.30am – 1.30pm

No call out charge – 24 hours, 7 days

All types of locks, open-supplied-fitted

Boarding Service - Emergency Repairs.

Key Cutting. Domestic &amp; Commercial.

Shutters, Grilles, Bars, Safes.

**01303 210057 / 07938599863****G B Haworth****Painter & Decorator****Interior & Exterior****Free Estimates Capel - 244206****Simpson Aerials**

Your local aerial installer

We install, repair and tune all TV and Radio Aerials and Satellite, including Freeview, Freeview Plus, Freesat and Freesat plus. Est: 1988

**Call Peter on  
07971807150****CAPEL VEHICLE SERVICES**

All makes of cars serviced and repaired.

MOT's &amp; repairs, mechanical and welding.

Tyres, Exhausts, Batteries Supplied &amp; Fitted

Competitive rates. No VAT.

*Friendly efficient service***Call John Horne 01303 255894**

Local free collection and delivery available if required

**CREATING QUALITY FOR OVER 40 YEARS**

- All types of paving (driveways, patios, pathways)
- Full driveway & dropped kerb packages
- Bricklaying & retaining walls
- Resin-bonded gravel
- Tarmac & concrete
- Dropped kerbs

CONTACT US FOR A FREE ESTIMATE

T: 01303 253437 / M: 07788 146673  
capelgroundworks@btinternet.com  
www.capelgroundworks.co.uk

Local Council Approved Contractors

**FITTING CREATIONS****BLINDS – CURTAINS – SHUTTERS****Friendly Family Business  
Local to you****01303 894882    07506 144427**[www.fittingcreations.com](http://www.fittingcreations.com)[info@fittingcreations.com](mailto:info@fittingcreations.com)**MOT Testing  
Station****MOT's**

- Cars
- Bikes
- Vans
- Quads

**Capel Garage****30 Old Dover Road,  
Capel-Le-Ferne****Tel: 01303 254282****SERVICING**

- Repairs
- Exhausts
- Tyres
- Batteries

Items for July 2018 issue to be with  
**Maureen Leppard (Editor)** at 39 Victoria Road, Capel-le-Ferne CT18 7LT,  
 (Tel: 01303 259564) or Email: [clerkcapellefernepc@btinternet.com](mailto:clerkcapellefernepc@btinternet.com)  
 by 6pm, Sunday, 17<sup>th</sup> June 2018  
**PLEASE NOTE IT IS EDITOR'S DECISION ON FINAL CONTENT**

